

Regional Transportation Plan

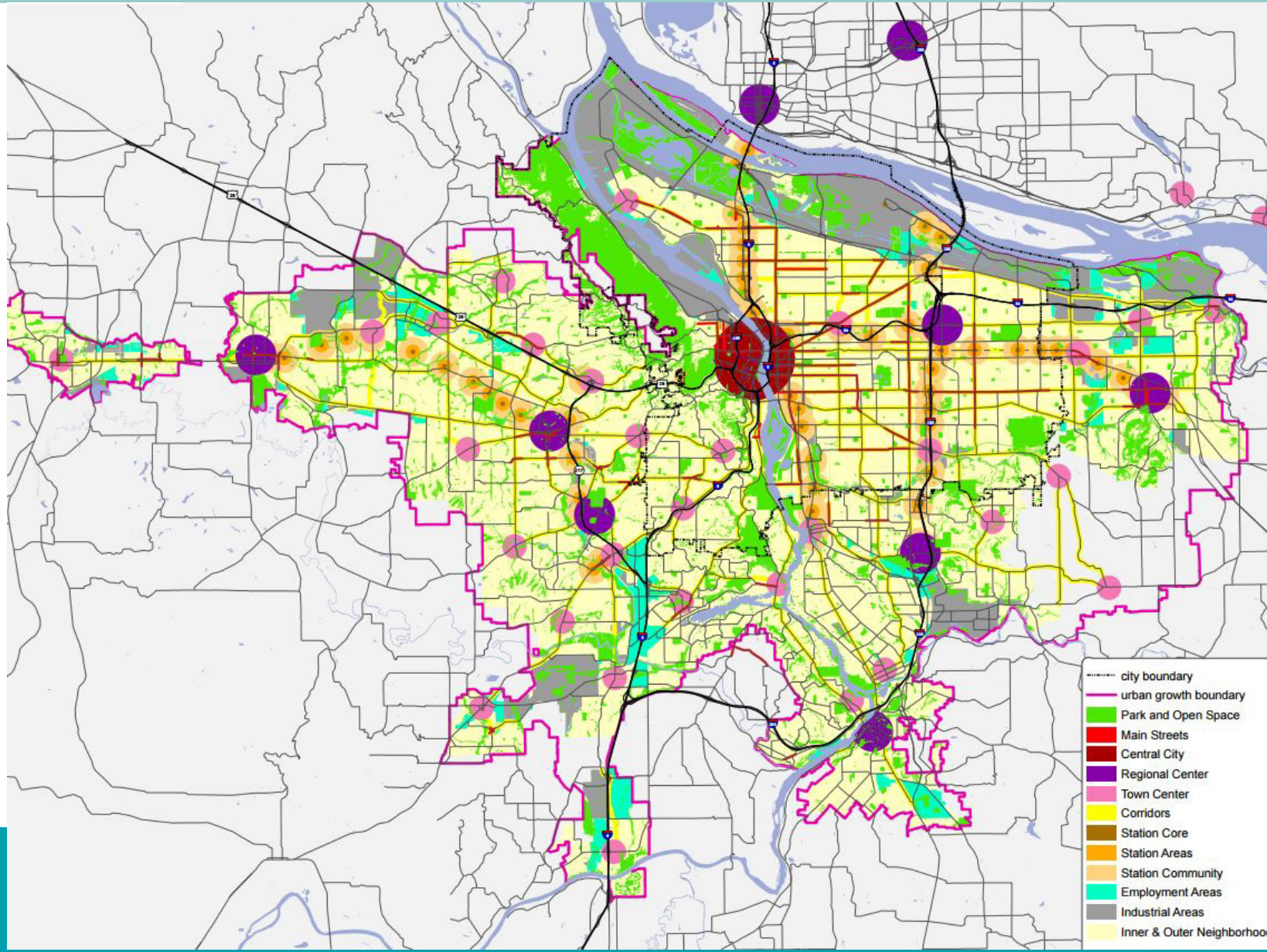
PSC Briefing

Art Pearce March 14, 2017

Today's Presentation

- **Importance of Transit to Support Growth**
- **Process for informing the RTP Update**
- **Current Initiatives**
 - Growing Transit Communities (GTC)
 - Enhanced Transit Corridors (ETC)
 - Portland Streetcar
- **Next Steps**

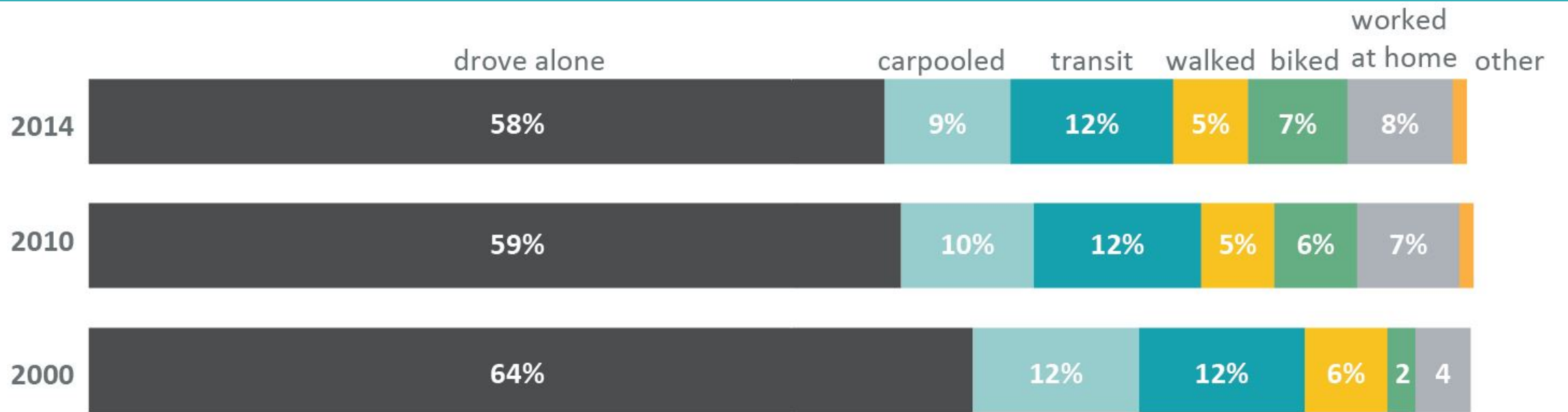
Metro 2040 Growth Concept



Transit needs our attention to support Portland as it grows

How Portland residents got to work

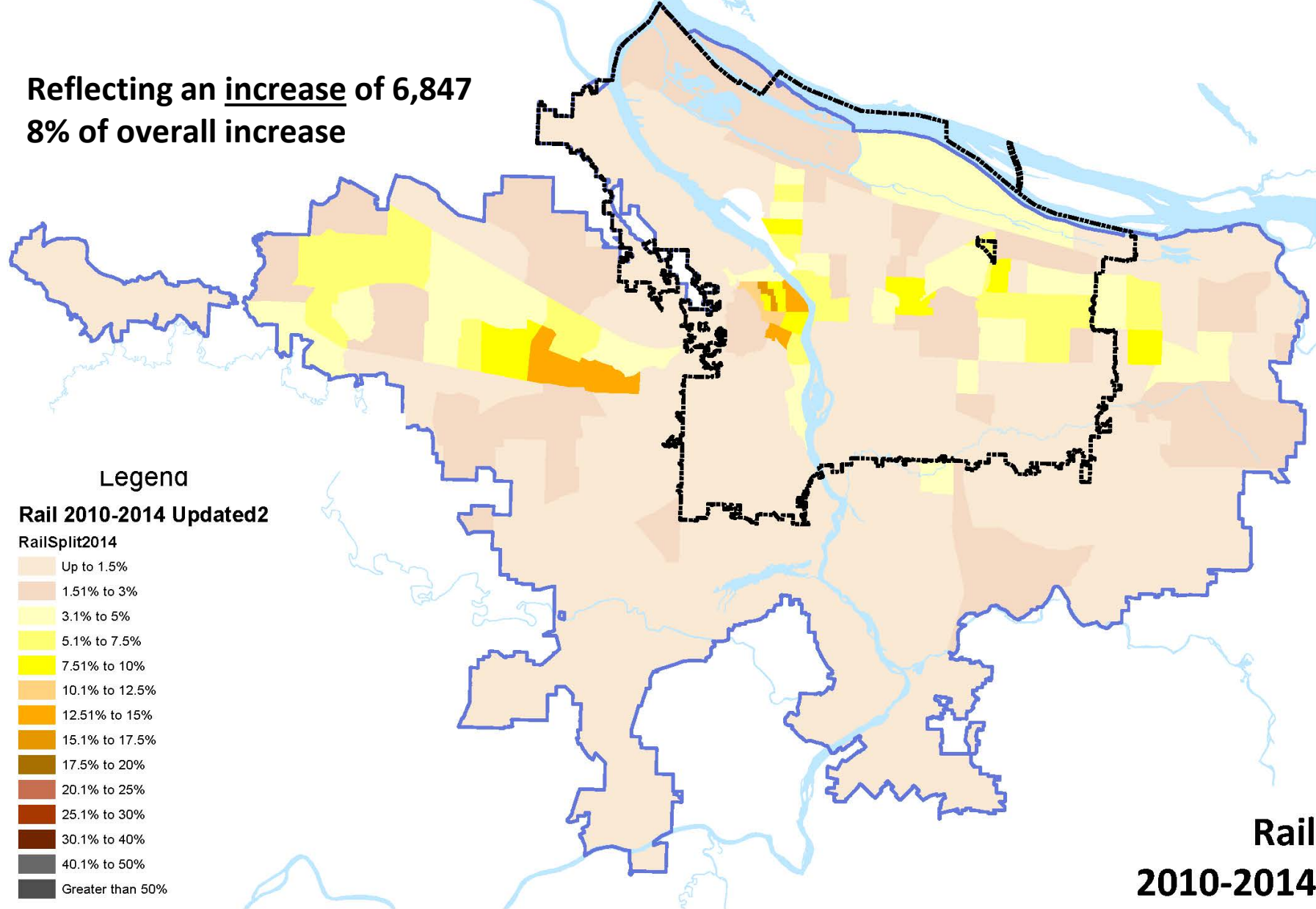
Sources: Census 2000, American Community Survey 2010, 2014



Portland Metropolitan Region within the urban growth boundary

Commute behavior by Census Tract

Reflecting an increase of 6,847
8% of overall increase



Legenda
Rail 2010-2014 Updated2
RailSplit2014

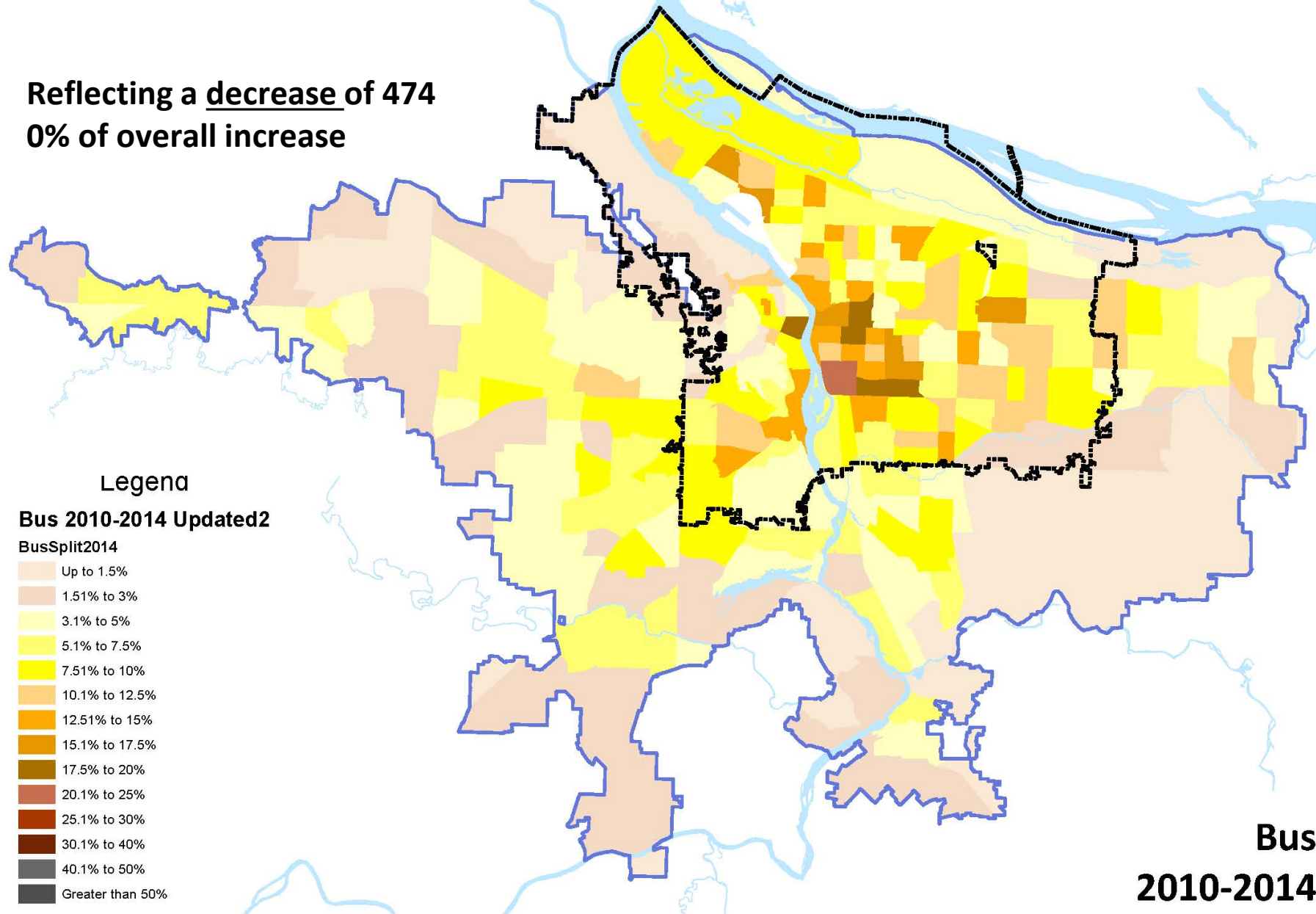
- Up to 1.5%
- 1.51% to 3%
- 3.1% to 5%
- 5.1% to 7.5%
- 7.51% to 10%
- 10.1% to 12.5%
- 12.51% to 15%
- 15.1% to 17.5%
- 17.5% to 20%
- 20.1% to 25%
- 25.1% to 30%
- 30.1% to 40%
- 40.1% to 50%
- Greater than 50%

**Rail
2010-2014**

Portland Metropolitan Region within the urban growth boundary

Commute behavior by Census Tract

Reflecting a decrease of 474
0% of overall increase



Legend

Bus 2010-2014 Updated2

BusSplit2014

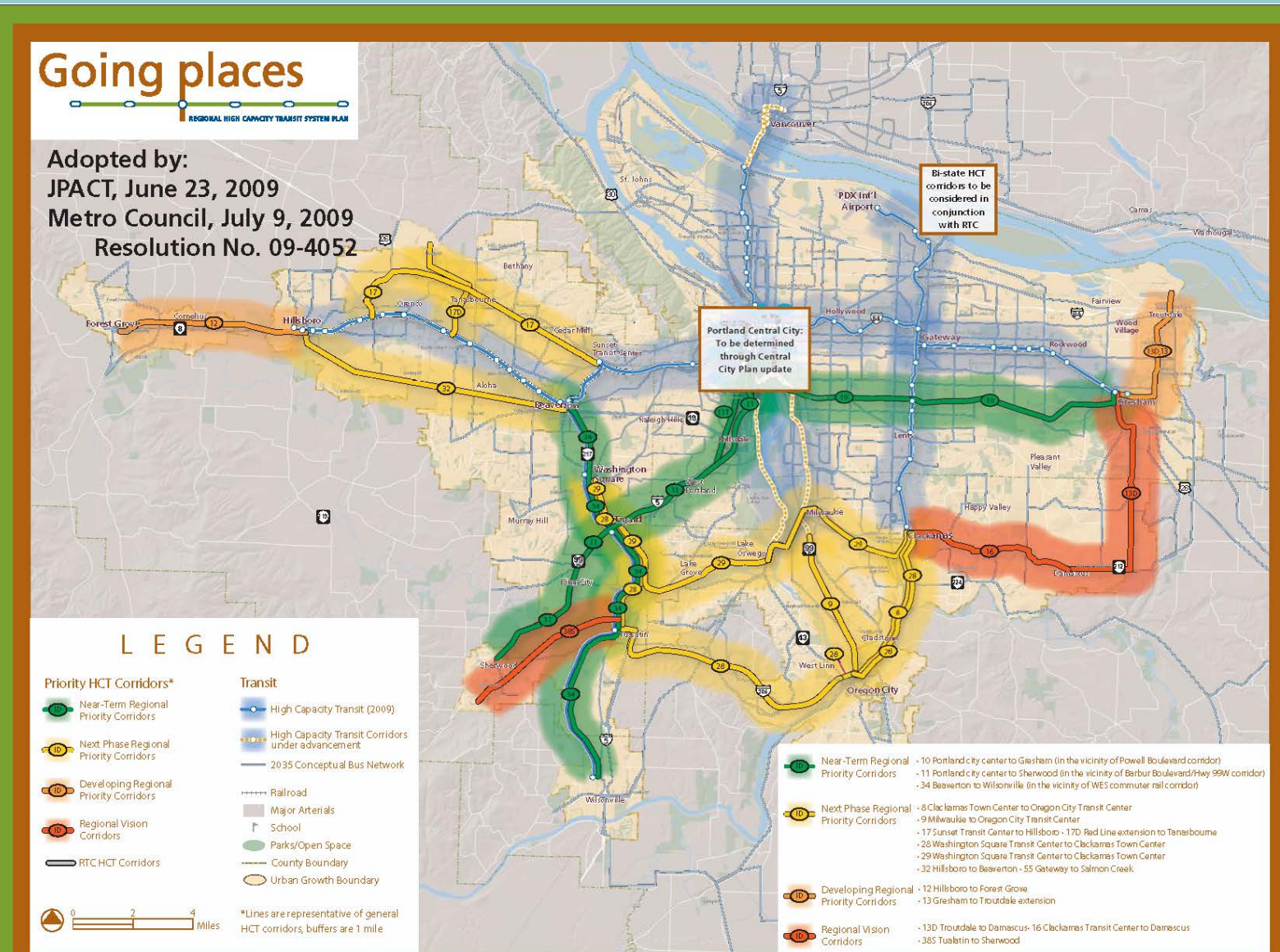
- Up to 1.5%
- 1.51% to 3%
- 3.1% to 5%
- 5.1% to 7.5%
- 7.51% to 10%
- 10.1% to 12.5%
- 12.51% to 15%
- 15.1% to 17.5%
- 17.5% to 20%
- 20.1% to 25%
- 25.1% to 30%
- 30.1% to 40%
- 40.1% to 50%
- Greater than 50%

**Bus
2010-2014**

Regional Transportation Plan High Capacity

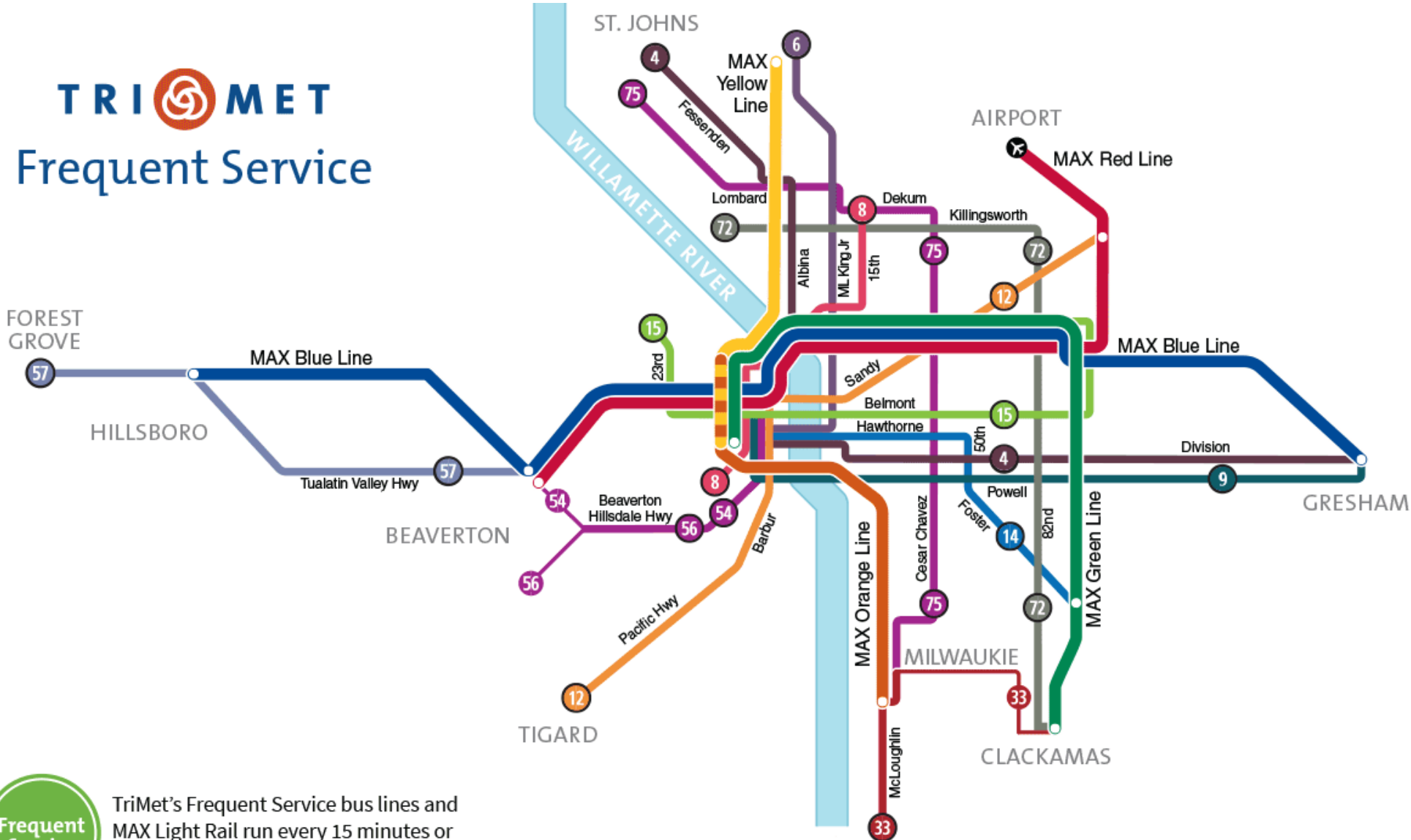
This map will be updated as part of the 2018 RTP Update

New transit projects will be identified



Bus network

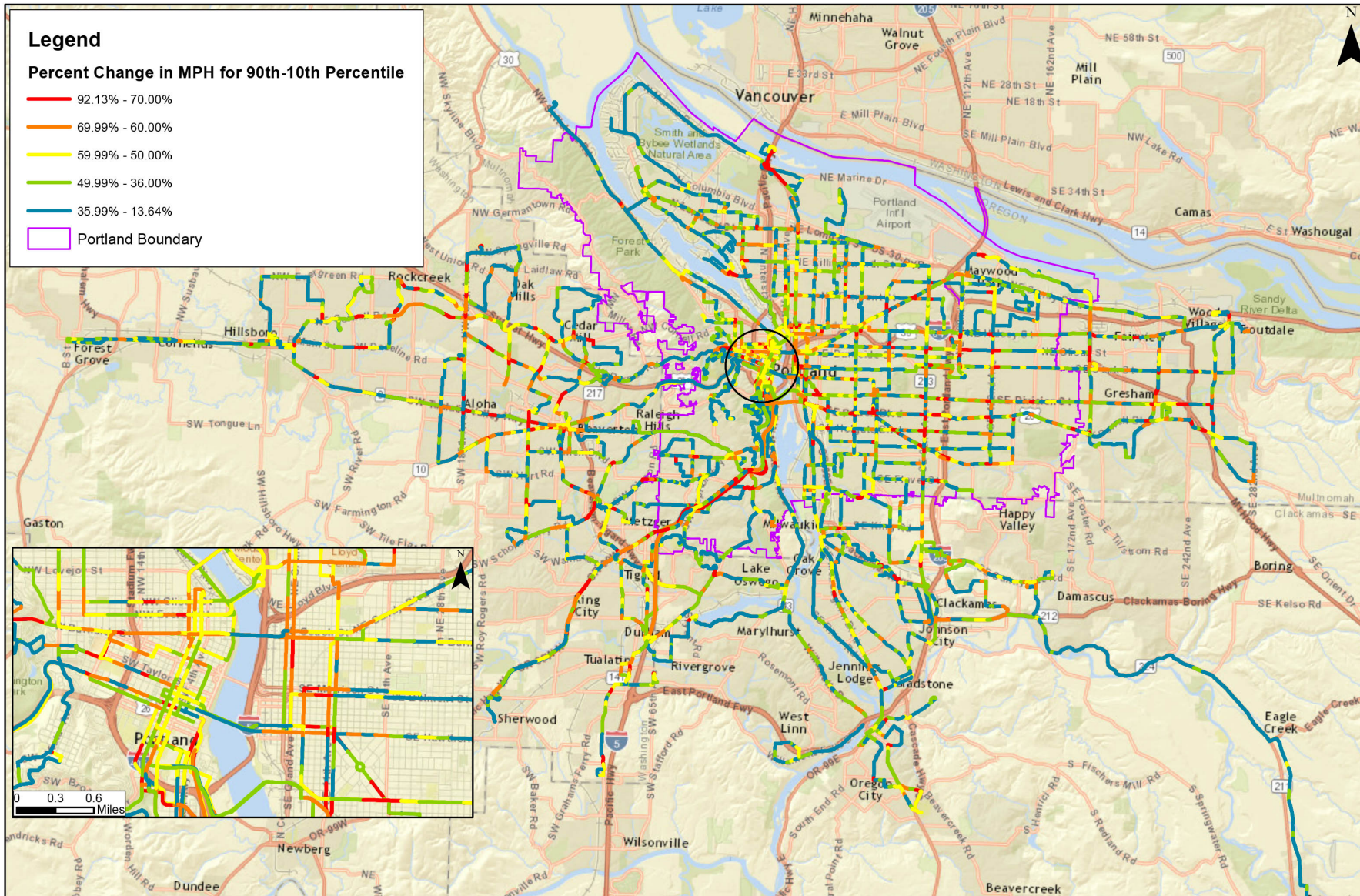
TRIMET
Frequent Service



TriMet's Frequent Service bus lines and MAX Light Rail run every 15 minutes or better most of the day, every day.

Traffic congestion is slowing transit service region-wide

TriMet System Percent Change in MPH for 90th and 10th Percentile Speeds for Reliability, Fall 2015

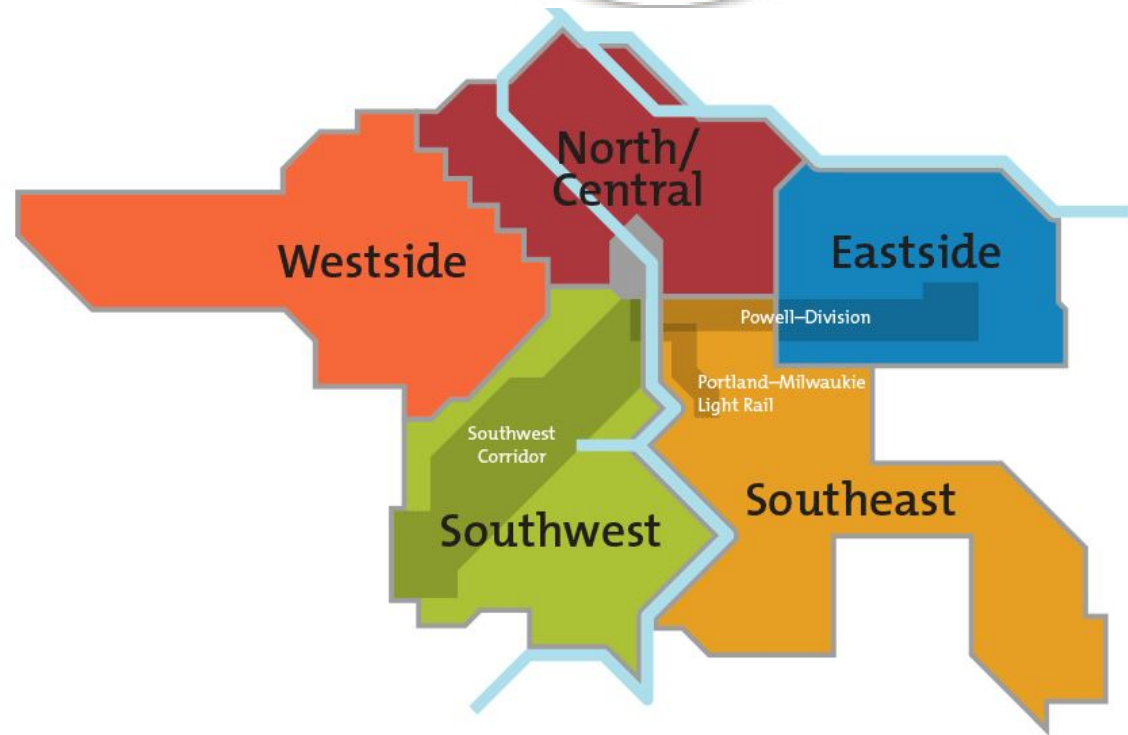


We need to do more to support Transit in Portland

- Ridership is not growing adequately to support growth
- Buses are getting stuck in traffic
- New growth is happening in areas in need of better transit service and access
- Limited sources of revenue



www.trimet.org/future



Service Enhancement Plans

Creating a shared vision for making transit better

**THE VIRTUOUS UPWARD SPIRAL
OF TRANSIT INVESTMENT**

BETTER ACCESS

**THE CITY
INVESTS IN
SAFETY & ACCESS TO
TRANSIT AND OPERATIONAL
IMPROVEMENTS**



**MORE PEOPLE CAN REACH
AND USE TRANSIT**

**TRANSIT BECOMES A USEFUL
OPTION FOR MORE PEOPLE**



**TRIMET INVESTS IN
IMPROVED SERVICE**

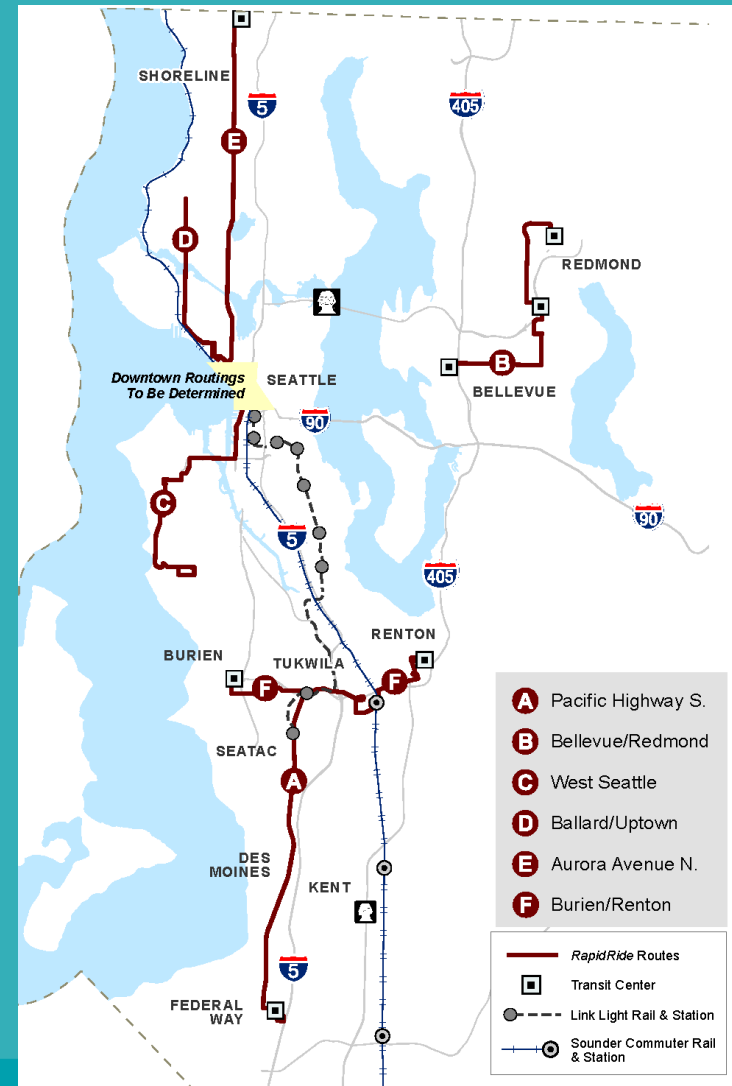
BETTER SERVICE

Growing Transit Communities

Enhanced Transit Corridors

Enhanced Transit

- Cities throughout the US are developing smaller scale projects to make transit more competitive.
- The Portland region needs to create a pipeline of lower cost transit offerings to improve transit capacity, headways and reliability.
- Improvements should be developed in partnership between TriMet and local jurisdictions
- We can do this in more places and more quickly!



RapidRide in Seattle

Enhanced Transit Corridors

TSP Refinement Plan

“This study will identify corridors needing higher transit capacity to accommodate projected growth and to support TSP outcomes including prosperity, equity, safety and climate. The study will identify the general types of improvements needed in each corridor.

The result will be projects for the next RTP and/or TSP.”

THE SYMBIOTIC RELATIONSHIP
BETWEEN THE TSP AND RTP



GETTING PROJECTS INTO THE REGIONAL TRANSPORTATION PLAN

Update Today on Current Efforts

In progress / process

GROWING TRANSIT COMMUNITIES STREETCAR ANALYSIS

ENHANCED TRANSIT CORRIDORS

Adopted

TRANSPORTATION SYSTEM PLAN

SERVICE ENHANCEMENT PLANS

REGIONAL TRANSPORTATION PLAN 2018 UPDATE

TRANSIT VISION STRATEGY

CALL FOR PROJECTS

TRANSPORTATION SYSTEM PLAN
FUTURE UPDATES

GETTING PROJECTS INTO THE REGIONAL TRANSPORTATION PLAN

