

VENTURE PORTLAND

Growing Business. Connecting Neighborhoods.

ST. JOHNS
GOOSE HOLLOW
SWAN ISLAND
CENTRAL EASTSIDE
UNIVERSITY PARK
KENTON
FOSTER
N. WILLIAMS
MONTAVILLA/EAST TAVOR
WOODSTOCK
82ND AVE
OVERLOOK VILLAGE
BEAUMONT
WESTMORELAND
SELLWOOD
N/NE
PARKROSE
MULTNOMAH VILLAGE
LLOYD
NOB HILL
PEARL DISTRICT
42ND AVE
BURNSIDE EAST

OLD TOWN
CHINATOWN
GATEWAY
MIDWAY
GREATER BROOKLYN
N. PORTLAND
DIVISION/CLINTON
HANTHORNE
NW INDUSTRIAL
HOLLYWOOD
ALBERTA
BELMONT
MISSISSIPPI AVE
INTERSTATE
COLUMBIA CORRIDOR
S. PORTLAND
HILLSDALE
PORTLAND INTERNATIONAL
NE BROADWAY



INTEGRATE

ARCHITECTURE & PLANNING



82nd Avenue

AROUND THE WORLD IN 82 DISHES

A Food Tour of 82nd Avenue
第 82 大街 的 美 食 之 旅
Một tour du lịch thực phẩm của 82 Avenue
Un gira de comida de la avenida 82

Collect stickers from participating businesses to win prizes!
Visit Discover82ndAve.com for more information.

從參展企業贏得獎品領取貼紙！
 訪問 Discover82ndAve.com 了解更多信息。

Được dẫn từ các doanh nghiệp tham gia để giành giải thưởng
 Truy cập vào Discover82ndAve.com để biết thêm thông tin

Colecta etiquetas de los negocios participantes para ganar premios!
 Visita Discover82ndAve.com para más información.

August 1-31, 2016



August 1-31, 2016

Visit Discover82ndAve.com for more information.



Alberta

17TH ANNUAL
ALBERTA STREET FAIR
 SATURDAY, AUGUST 9 • 11AM TO 6PM

300 VENDORS | 3 STAGES OF MUSIC | KIDS PARADE 11AM @15TH

2 BEER GARDENS @11TH • @29TH (UNTIL 9:30PM) (OPEN TIL 8:00PM) | "PLAY IN THE STREET" ALL DAY @11TH

KIDS CORNER @ 18TH | \$2 SUGGESTED DONATION

MORE INFO @ ALBERTAMAINSTORG



LIT UP *and* LOCAL

A MONTH OF MERRIMENT ON ALBERTA STREET

A MONTH OF MERRIMENT ON ALBERTA STREET

VENTUREPORTLAND
 Growing Business. Connecting Neighborhoods.

ST. JOHNS GROSSE HOLLOW
 SWAN ISLAND
 ST. JAMES
 UNIVERSITY PARK
 CENTON
 IN WILLIAMS
 MONTEVILLA (EAST TOWN)
 WOODSTOCK
 WOODBINE
 OYERDAKE VILLAGE
 BELMONT MARSHWOOD
 SELLWOOD
 MULTNOMAH VILLAGE
 PARKROSE
 ELLIOTT
 WOODHAY
 42ND AVE
 BURNSIDE EAST
 PORTLAND INTERNATIONAL
 NE NE BROADWAY
 11TH

Central Eastside



A vertical poster for the Portland Night Market. The background is dark blue with white stars at the top. Below the stars, the text "PORTLAND NIGHT MARKET" is written in a bold, orange, sans-serif font. Underneath the text is a graphic of a string of white lights and a string of yellow triangular bunting flags. Below the bunting, the text "CENTRAL EASTSIDE INDUSTRIAL DISTRICT" is written in the same orange font. Underneath that, "100 SE ALDER STREET" is written in white. A red banner with white text reads "FOOD • DRINK • ART • MUSIC". At the bottom, the dates and times "NOV. 20TH 4-10 PM" and "NOV. 21ST 12-10 PM" are listed, separated by an ampersand. Below the dates, it says "TO LEARN MORE VISIT PDXNM.COM".

PORTLAND
NIGHT MARKET

CENTRAL EASTSIDE
INDUSTRIAL DISTRICT

100 SE ALDER STREET

FOOD • DRINK • ART • MUSIC

NOV. 20TH 4-10 PM & NOV. 21ST 12-10 PM

TO LEARN MORE VISIT PDXNM.COM



Foster Area



SPIRIT OF FOSTER TASTING TOUR

Sips & Snacks

21+ Only

Bar Maven

FoPo Tavern

N.W.I.P.A.

Starday Tavern

Barrio

Pod Bar

All Ages

Carts on Foster

Nayar Taqueria

Portland Mercado

Red Castle Games

and more!

Saturday July 9th, 4-8pm



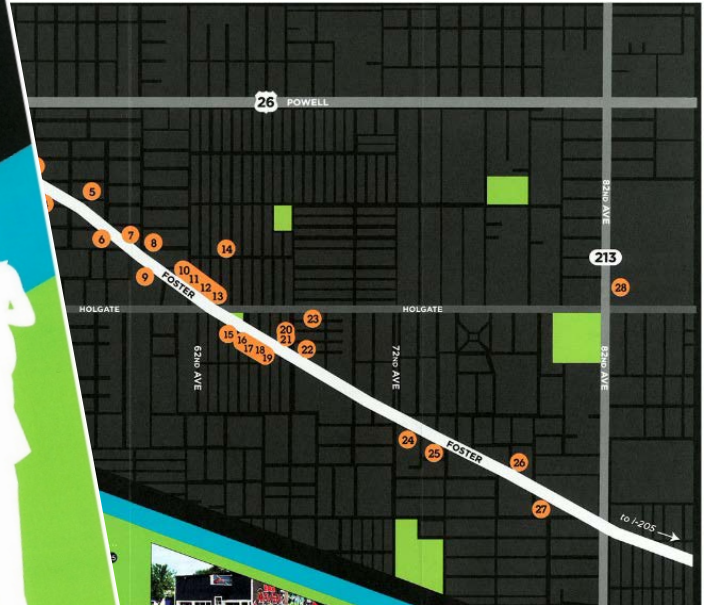
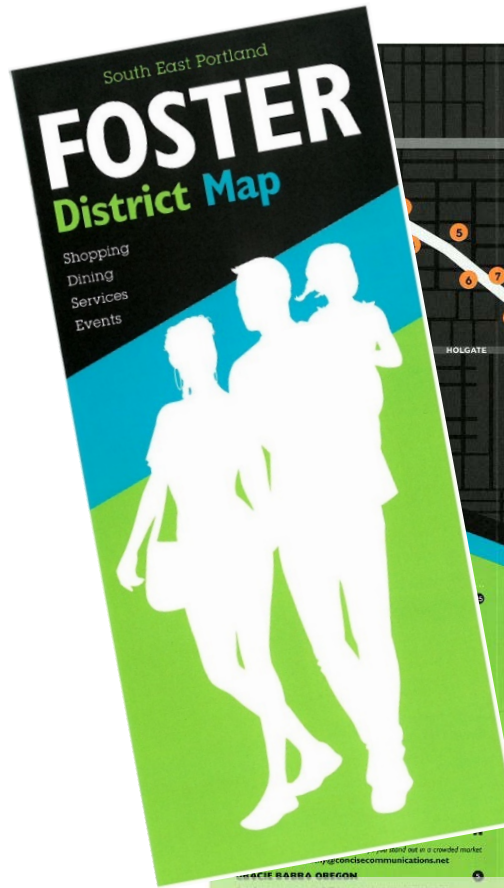
More info at fosterarea.com



More info at fosterarea.com



mpq4d 4'it' 4-8pm 4'it' 4-8pm



SE WORKS INC.
www.seworks.org
Community based organization committed to quality workforce development for southeast area residents.
7916 SE Foster • (503) 772-2310

SMILE AT THE RAIN TUTORING
www.smileattherain.com
Dedicated to assist elementary & middle school students in reading, writing, math, study skills, social skills, homework help and other core area areas.
5613 SE Bush St • (503) 819-9238

TANGO BERRETIN
www.tangoberretin.com
Owned by world renowned tango dancer Alex Ferrel, Tango Berretin hosts milongas, classes, and special events.
3705 SE Foster • (503) 771-7470

THE BEE
www.readthebee.com
Newspaper that has served southeast Portland since 1906.
(503) 232-2326



NAYAR TAQUERIA
www.facebook.com/Nayar-Taqueria-59433923742705
A family-friendly restaurant serving delicious Mexican dishes with distinct, irresistible flavors.
5919 SE Foster • (971) 888-4897

N.W.I.P.A.
nwipa.beer
Beer bottle shop offering a variety of indie Pils Ales on tap & in bottles to go.
6350 SE Foster • (503) 805-7342



Hollywood



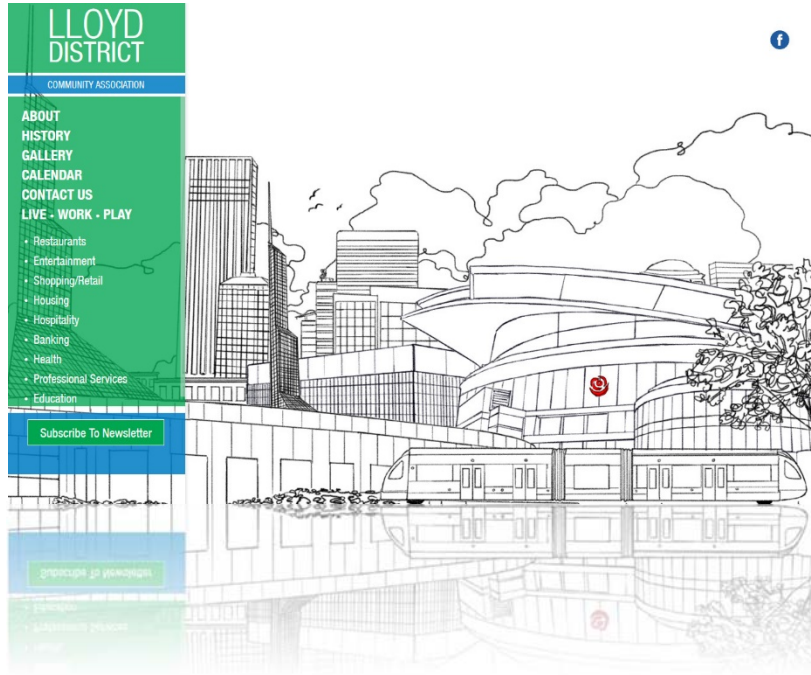
Lents



**BUSINESS
ASSOCIATION**
A22OCIATION
B U 2 I N E 2 2

VENTUREPORTLAND
Growing Business. Connecting Neighborhoods.
ST. JOHNS GROSS HOLLOW SWAN ISLAND SWIFT LESTER ESCUE UNIVERSITY PARK IN. WILLIAMS WOODSTOCK OVERLOOK VILLAGE BEAUMONT MARSHWOOD PARKROUSE ELLIOTT MULTNOMAH VILLAGE POLK DISTRICT OLD TOWN CHINATOWN GATEWAY AVONDALE NW INDUSTRIAL HOLLYWOOD ALBERTA 21st MASSILLON PORTLAND INTERNATIONAL BURNSIDE EAST

Lloyd District



Montavilla/East Tabor



DATE: July 31, 2016 **TIME:** 11am to 5pm
Downtown Montavilla - SE Stark St. Between 76th & 82nd Ave

MUSIC with **2 STAGES**

OVER 100 VENDORS **KIDVILLA**

FOOD & DRINK

FARMER'S MARKET





FARMER'S MARKET



THE GREAT 2016
MONTAVILLA
PRESENTS


TRICK OR TREAT on GLISAN STREET

Montavilla's East Glisan neighborhood businesses invite you to trick or treat with us!

We will be handing out candy Halloween day to all our costumed ghouls and goblins during business hours!

Also, vote for your favorite pumpkin!

MONDAY OCT. 31ST
MONTAVILLA'S EAST GLISAN BUSINESSES (68TH-82ND AVE)
CROSSFIT ALL DAY - ALL AGES A METBA EVENT



CROSSFIT ALL DAY - ALL AGES A METBA EVENT

MONTAVILLA'S EAST GLISAN BUSINESSES (68TH-82ND AVE)

MONDAY OCT. 31ST

Also, vote for your favorite pumpkin!



Frosty Fest 2016

December 9th 4th Annual Merry Montavilla Soiree
Business Casual to Historic Downtown Montavilla

December 10th Soiree Saturday at Wix Theatre
Step by Star Soiree, 6 crafts from 11 am - 2 pm

December 11th Soiree Sunday
Free showing of "10" 5 pm at The Academy Theater

Local businesses will be accepting warm winter weather clothing donations to benefit JORN



Be sure to vote for your favorite window display on the Montavilla East Tabor Business Association Facebook page!
Voting ends December 18th!




VENTUREPORTLAND

Growing Business. Connecting Neighborhoods.

ST. JOHNS GORSE HOLLOW
SUNNYVALE
UNIVERSITY PARK
MONTAVILLA/EAST TABOR
FOSTER
WILLOWBROOK
HOLLYWOOD
ALBERTA
NEW INDUSTRIAL
HOLLYWOOD
LUTHER
ZEPHYRUS
MONTAVILLA
PORTLAND INTERNATIONAL
EAST TAVOR
BURNSIDE EAST
BURNSIDE WEST

Old Town/Chinatown



Parkrose

3rd Annual TASTE OF PARKROSE EggFEST

Big Green Egg

HISTORIC PARKROSE
HERITAGE TO THE COMMUNITY

06.25.16
10AM - 4PM

Arts & Craft | Street Vendors | Kids Play Area | 5/10K Run/Walk & Kids Fun Run

Beer Garden | Music Stage | Food Samples

Sponsored by and Located at
PARKROSE HARDWARE

Thank You to our Sponsors:

MULTNOMAH COUNTY CULTURAL COALITION | GATEWAY BREWING | PDC | VENTURE PORTLAND

More Info & Run Sign Up At
WWW.HISTORICPARKROSE.COM

WWW.HISTORICPARKROSE.COM

COVINGTON GOVERNMENT CENTER | GATEWAY BREWING | bDC | AGULLIN BOLLTOWN

VENTURE PORTLAND



FREE FAMILY HALLOWEEN EVENT

PARKROSE TRUNK OR TREAT

AGES 0-12
4-6PM

FREE FAMILY HALLOWEEN FUN
FREE CANDY!

Sunday, OCTOBER 30th, 2016

PARKROSE HIGH SCHOOL PARKING LOT
12003 NE SHAVER ST. PORTLAND, OR 97220

EXCLUSIVE PARKROSE BUSINESS COUPONS FOR ADULTS
CANDY - GAMES - SPOOKY MUSIC
COSTUME CONTEST @ 5PM!

CONTACT US AT
PARKROSETRUNKORTREAT@GMAIL.COM

WWW.PARKROSEBUSINESS.ORG | WWW.HISTORICPARKROSE.COM

Our Generous Sponsors

ARGAY SQUARE | PARKROSE HARDWARE | GROCERY OUTLET | BROWN'S | point@S | sign@now

HOOKSET AUTOMOTIVE • NORWEST ENGINEERING, INC. • PACIFIC NW FEDERAL CREDIT UNION
NORTHWEST PEST CONTROL • PARKROSE LIONS • COWLES DENTAL CARE • VENTURE PORTLAND

VENTURE PORTLAND
Growing Business. Connecting Neighborhoods.

OLD TOWN CHINA TOWN | GATEWAY | AVONDA | MULTNOMAH VILLAGE | ST. JOHNS | GROSSE HOLLOW | SUNNYVALE | UNIVERSITY PARK | CENTIN | IN WILLIAMS | PARKROSE - ELWOOD | PARKROSE - LLOYD | MULTNOMAH VILLAGE | BURBANK EAST | NW INDUSTRIAL | HOLLYWOOD | ALBERTA | PORTLAND INTERNATIONAL | NE BROADWAY

Pearl District



VENTUREPORTLAND
Growing Business. Connecting Neighborhoods.
ST. JOHNS
GOOSE HOLLOW
SWING LECTURE
UNIVERSITY PARK
CENTON
MONTAVILLA
EAST Tabor
WOODSTOCK
R2ND TAC
OVERLOOK VILLAGE
BEAUMONT MARSHWOOD
FELLSWOOD
MOLLYMAN VILLAGE
LLOYD
NORTH HALL
PARKROSE
IN THE
BURBANK
PARKWAY
R2ND AVE
BURBANK EAST
NW INDUSTRIAL
HOLLYWOOD
ALBERTA
3RD
MADISON
ZACHRY
PORTLAND INTERNATIONAL
DOWNTOWN
E
NE BROADWAY

University Park



VENTUREPORTLAND
Growing Business. Connecting Neighborhoods.
ST. JOHNS
GROUSE HOLLOW
SWINGFIELD
SWIFT LESTER
UNIVERSITY PARK
WEST
MONTAVILLA
EAST Tabor
WILLIAMS
FOSTER
WOODSTOCK
W. 82ND AVE
OVERLOOK VILLAGE
BEAUMONT MARSHWOOD
W. BELLWOOD
PARKROSE
E. LUTHER
MULTIWOAH VILLAGE
PARK CENTRAL
W. 82ND AVE
BURBANK EAST
OLD TOWN
CHINATOWN
GATEWAY
AVENUE
N. 10TH
N. 15TH
N. 20TH
N. 25TH
N. 30TH
N. 35TH
N. 40TH
N. 45TH
N. 50TH
N. 55TH
N. 60TH
N. 65TH
N. 70TH
N. 75TH
N. 80TH
N. 85TH
N. 90TH
N. 95TH
N. 100TH
N. 105TH
N. 110TH
N. 115TH
N. 120TH
N. 125TH
N. 130TH
N. 135TH
N. 140TH
N. 145TH
N. 150TH
N. 155TH
N. 160TH
N. 165TH
N. 170TH
N. 175TH
N. 180TH
N. 185TH
N. 190TH
N. 195TH
N. 200TH
N. 205TH
N. 210TH
N. 215TH
N. 220TH
N. 225TH
N. 230TH
N. 235TH
N. 240TH
N. 245TH
N. 250TH
N. 255TH
N. 260TH
N. 265TH
N. 270TH
N. 275TH
N. 280TH
N. 285TH
N. 290TH
N. 295TH
N. 300TH
N. 305TH
N. 310TH
N. 315TH
N. 320TH
N. 325TH
N. 330TH
N. 335TH
N. 340TH
N. 345TH
N. 350TH
N. 355TH
N. 360TH
N. 365TH
N. 370TH
N. 375TH
N. 380TH
N. 385TH
N. 390TH
N. 395TH
N. 400TH
N. 405TH
N. 410TH
N. 415TH
N. 420TH
N. 425TH
N. 430TH
N. 435TH
N. 440TH
N. 445TH
N. 450TH
N. 455TH
N. 460TH
N. 465TH
N. 470TH
N. 475TH
N. 480TH
N. 485TH
N. 490TH
N. 495TH
N. 500TH
N. 505TH
N. 510TH
N. 515TH
N. 520TH
N. 525TH
N. 530TH
N. 535TH
N. 540TH
N. 545TH
N. 550TH
N. 555TH
N. 560TH
N. 565TH
N. 570TH
N. 575TH
N. 580TH
N. 585TH
N. 590TH
N. 595TH
N. 600TH
N. 605TH
N. 610TH
N. 615TH
N. 620TH
N. 625TH
N. 630TH
N. 635TH
N. 640TH
N. 645TH
N. 650TH
N. 655TH
N. 660TH
N. 665TH
N. 670TH
N. 675TH
N. 680TH
N. 685TH
N. 690TH
N. 695TH
N. 700TH
N. 705TH
N. 710TH
N. 715TH
N. 720TH
N. 725TH
N. 730TH
N. 735TH
N. 740TH
N. 745TH
N. 750TH
N. 755TH
N. 760TH
N. 765TH
N. 770TH
N. 775TH
N. 780TH
N. 785TH
N. 790TH
N. 795TH
N. 800TH
N. 805TH
N. 810TH
N. 815TH
N. 820TH
N. 825TH
N. 830TH
N. 835TH
N. 840TH
N. 845TH
N. 850TH
N. 855TH
N. 860TH
N. 865TH
N. 870TH
N. 875TH
N. 880TH
N. 885TH
N. 890TH
N. 895TH
N. 900TH
N. 905TH
N. 910TH
N. 915TH
N. 920TH
N. 925TH
N. 930TH
N. 935TH
N. 940TH
N. 945TH
N. 950TH
N. 955TH
N. 960TH
N. 965TH
N. 970TH
N. 975TH
N. 980TH
N. 985TH
N. 990TH
N. 995TH
N. 1000TH

30TH ANNIVERSARY

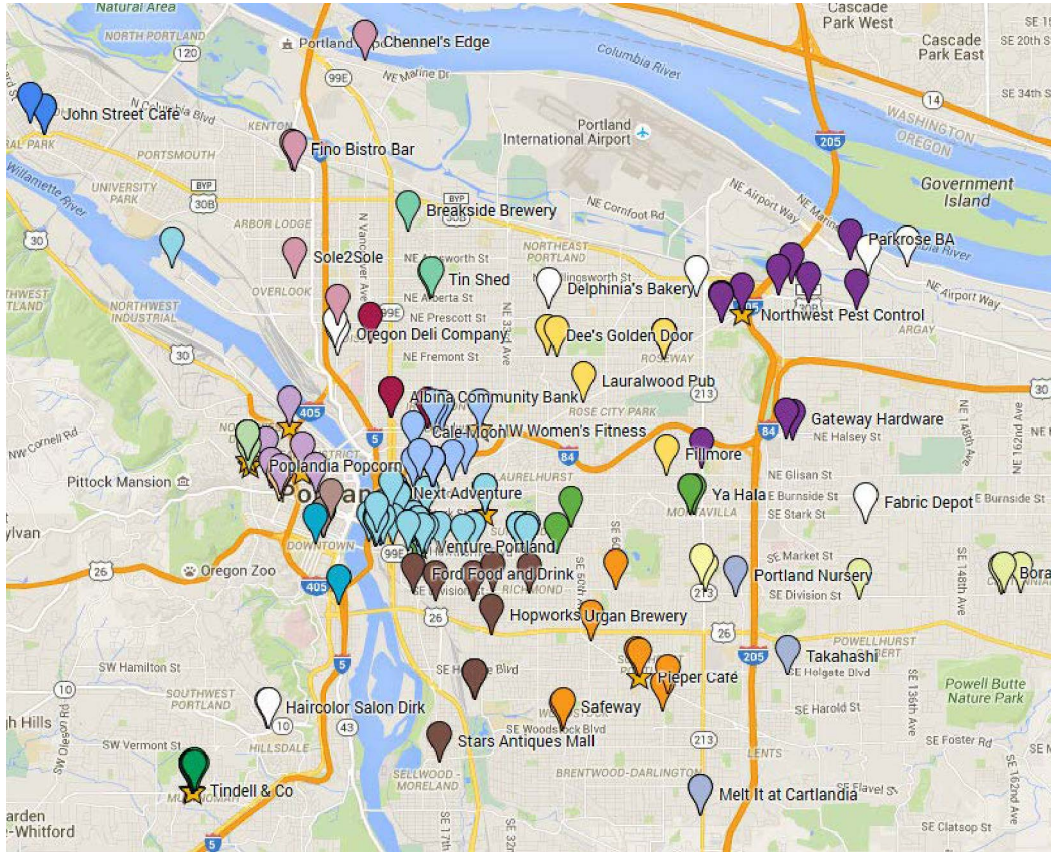


VENTURE PORTLAND 30 YEARS
Growing Business. Connecting Neighborhoods.

ST. JOHNS
GOOSE HOLLOW
SWAN ISLAND
CENTRAL EASTSIDE
UNIVERSITY PARK
KENTON
FOSTER
MONTAVILLA/EAST TADON
N. WILLIAMS
HODSDOCK
42ND AVE
OVERLOOK VILLAGE
BEAUMONT
WESTMORELAND
PARKROSE
SEASIDE AVE
42ND AVE
THE LODGE
MULTNOMAH VILLAGE
PEARL DISTRICT
BURNSIDE EAST

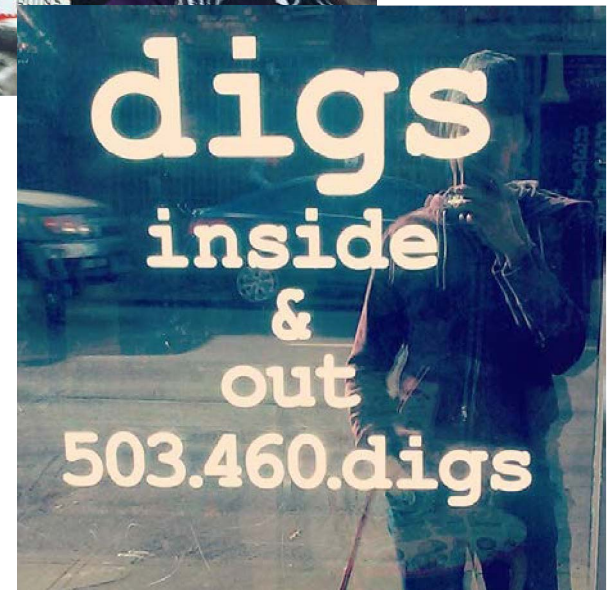
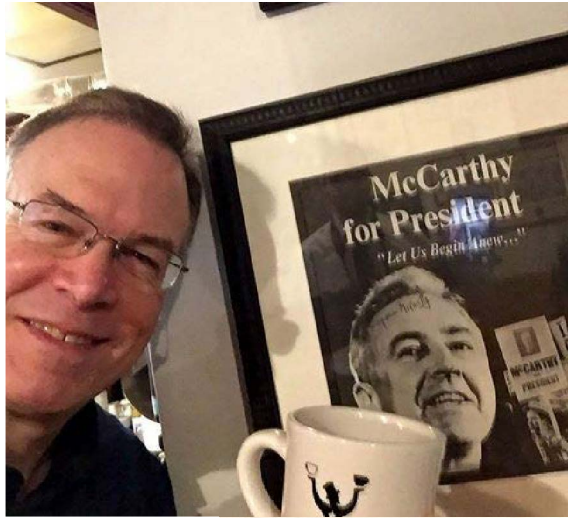
OLD TOWN
CHINATOWN
GATEWAY
LYNNMILL
GLENVIEW
N. PORTLAND
HAWTHORNE
HAWTHORNE
NW INDUSTRIAL
HOLLYWOOD
ALBERTA
PORTLAND INTERNATIONAL
N. BROADWAY
N. STATE
S. PORTLAND
COLUMBIAN CORRIDOR
INTERSTATE
MISSISSIPPI AVE
RELMONT

CLICK. TAG. WIN. SELFIE CHALLENGE

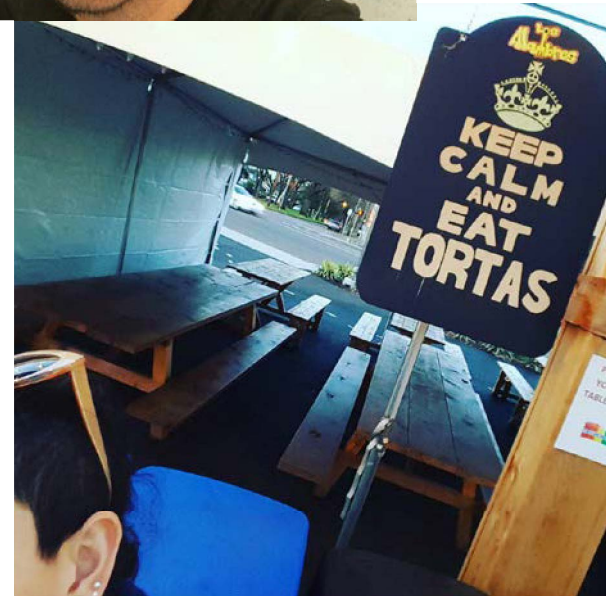


Portlanders took **204 SELFIES** in business districts city wide.

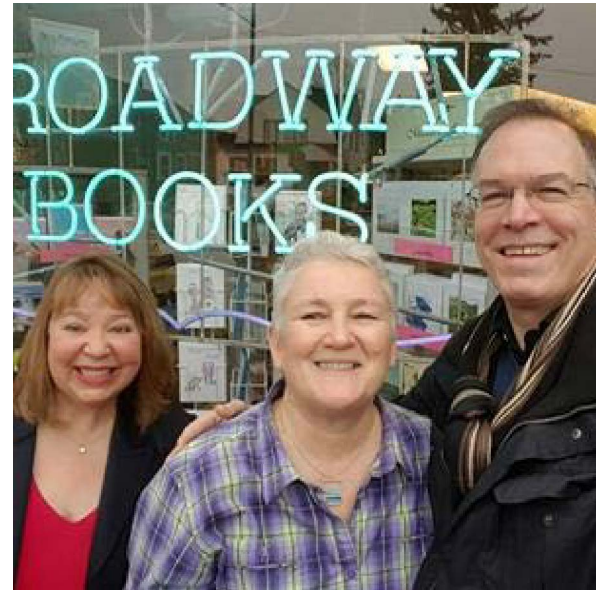
CLICK. TAG. WIN. SELFIE CHALLENGE



CLICK. TAG. WIN. SELFIE CHALLENGE



CLICK. TAG. WIN. SELFIE CHALLENGE



January 2016 to December 2016:

Venture Portland EXPANDED access to training
590 business district **LEADERS**
from **35** districts attended **43**
CAPACITY BUILDING TRAININGS
and **EVENTS**.



January 2016 to December 2016:

Venture Portland addressed **512**
district-specific **REQUESTS**
from business districts city wide.



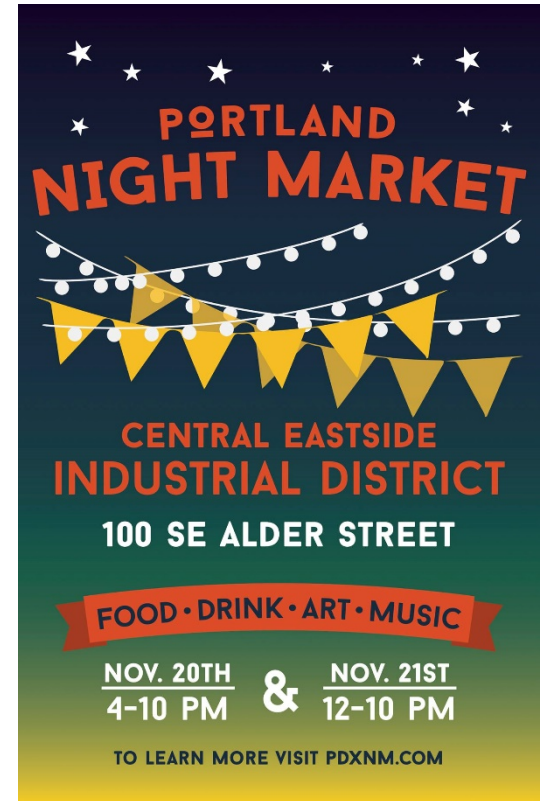
January 2016 to December 2016:

Venture Portland EXPANDED access to grants
AWARDED **\$112,250** to fund **36**
Projects in Districts LEVERAGING
\$461,882 a more than **4-to-1**
match.



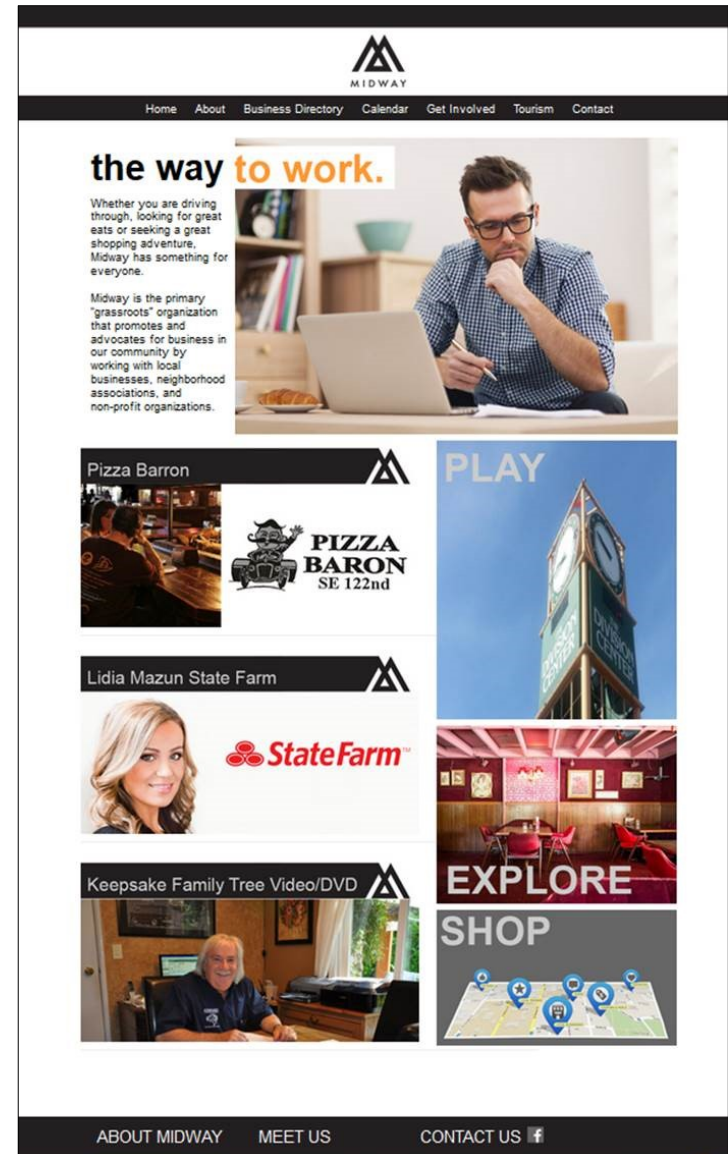
Central Eastside

- EXPANDED Night Market draws 20,000 attendees
- NEW Enhanced Services District (ESD)
- NEW Staffer
- NEW Website (Spring 2017)



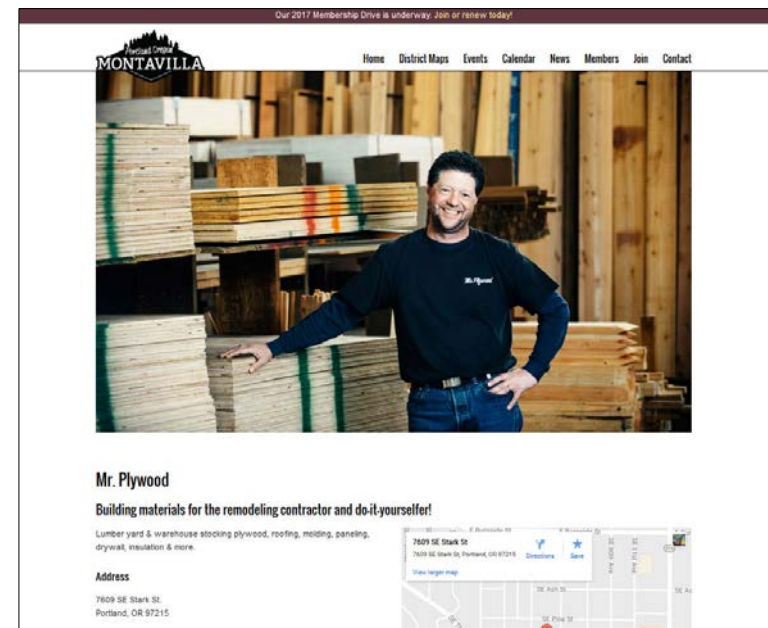
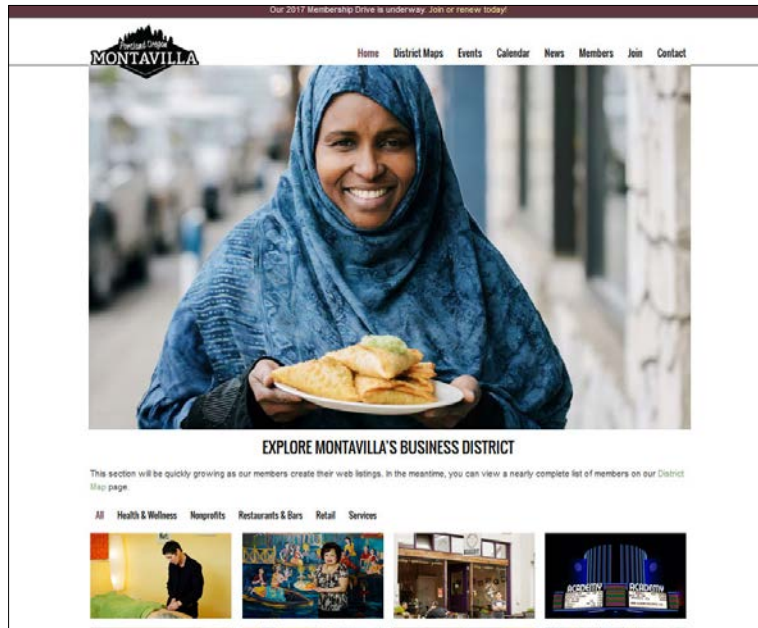
Midway

- NEW Outreach Strategy uncovered digital divide (80% Midway businesses not online)
- NEW Website has micro-sites for district business (Fall 2016)
- Increased Membership 53%



Montavilla/East Tabor

- NEW Website has micro-sites for district businesses (Summer 2016)
- EXPANDED Street Fair (12,000 attendees)
- Increased Membership 50%



Nob Hill

- NEW 'Ready, Set, Go!' Track and Field Event
- NEW 'Celebrate the Season of Joy' Event helped businesses recover from gas explosion
- NEW Staffer



— Lifting the spirits of NW 23rd —

Dec. 3-4, 2016

MarchFourth Acrobats
Dancers and Marionette Stilt Walkers
1-3 p.m. Dec. 3 & 4

Dickens Carolers
11 a.m.-1 p.m. Dec. 3
3-5 p.m. Dec. 4

Performing on the
sidewalks of NW 23rd

Free parking on the Legacy Good Samaritan
surface parking lot at NW 23rd & Kearney.
Free meter parking every Sunday.

For more info, visit www.nwpdxnobhill.com or email nobhillportland@gmail.com.
Sponsors: Nob Hill Business Association and Loy Clark Pipeline Co.



PARTNERSHIP WITH CITY OF PORTLAND

Helped City Council and Bureaus **CONNECT** with neighborhood businesses

- Worked with PBOT to reduce **STREET FAIR** Permit costs
- Ensured business districts receive the same land-use and Bureau **NOTIFICATIONS** as residential neighborhood associations
- Helped BES and PBOT mitigate **IMPACT** of construction on business districts



PORTLAND PILOT PROJECT: YEAR 2

Catalytic effort addresses disparity, gentrification and displacement among targeted East and North Portland business districts.

Goals/Results

- 10-20% Increase in Members
 - **48%** NEW members across all districts
- 10-20% Increase in Volunteers
 - **29%** INCREASE (22% people of color)
- 10-20% Increase in Revenue
 - **290%** INCREASE (generated \$160,000)



PORTLAND PILOT PROJECT: YEAR 2

Results:

- **14** NEW Revenue-Generating EVENTS drew **18,000+** attendees
- **15** Positive Earned Media Stories (2 front-page stories)
- **6** New Websites
- **\$100+ Million** Public Infrastructure Investment



INNOVATIVE PROGRAM DESIGN

Professional Staffing – Business District Organizer
(10-12 hours/week)

Catalytic Grant Funds

District-specific Technical Assistance



82ND AVENUE OF ROSES

- NEW Strategy focused on primary business mix (food & auto)
- NEW 'Around the World in 82 Dishes' Event with multi-lingual dining guide (Summer 2016)
- NEW 'Shop Talk' auto industry group



Stickers & Discounts These Businesses



el Sol

in fare including big burritos, enchiladas
s. Served with homemade salsas and
e daily.



afood

com | 503-771-2299
ese food and dim sum that blends
emporary cooking styles. Pick and
if dishes at the same time.

Stickers & Discounts These Businesses



afood

#101
3-788-8883
inese food and dim sum from award-
efs.

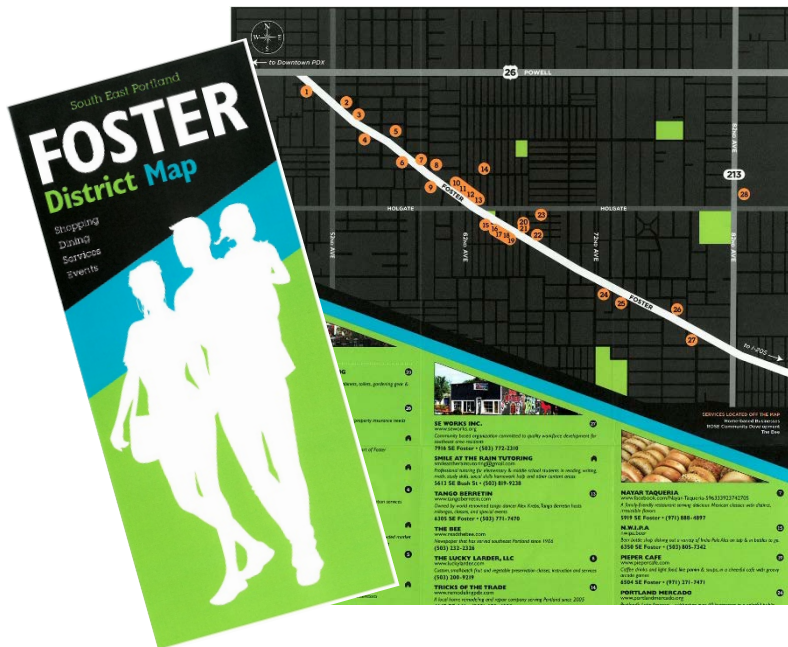


#103

enerous portion sizes. Signature
d pepper squid, green beans and

FOSTER AREA

- EXPANDED Tree Lighting drew 300 attendees (50% increase)
- NEW Tasting Tour generated nearly \$2,000 in business sales in 4 hours
- NEW Map promotes rapidly changing district





SPIRIT OF FOSTER TASTING TOUR

Sips & Snacks

21+ Only

Bar Maven
FoPo Tavern
N.W.I.P.A.
Starday Tavern
Barrio
Pod Bar

All Ages

Carts on Foster
Nayar Taqueria
Portland Mercado
Red Castle Games
and more!

Saturday July 9th, 4-8pm



More info at fosterarea.com





GATEWAY AREA

- NEW 'Shop Gateway for the Holidays' incentivized multiple purchases
- NEW 'Gateway Celebrates Small' Passport generated 250 purchases in district businesses
- NEW 'Takin' Care of Business' district clean-up removed 460 lbs of trash



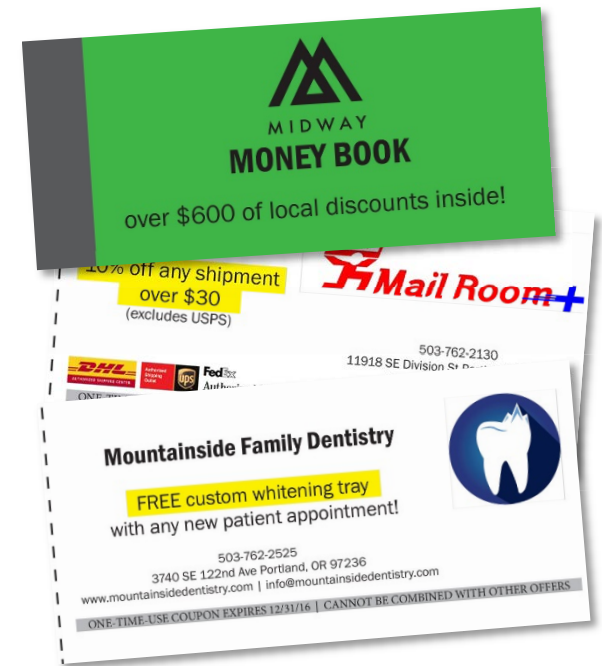
KENTON

- EXPANDED Trick or Treat on Denver Street drew 1,000 attendees (67% increase)
- EXPANDED Tree Lighting drew 500 attendees; donated 4 'community trees' to local families in need
- NEW Bunyan Beer Fest (Summer 2017)



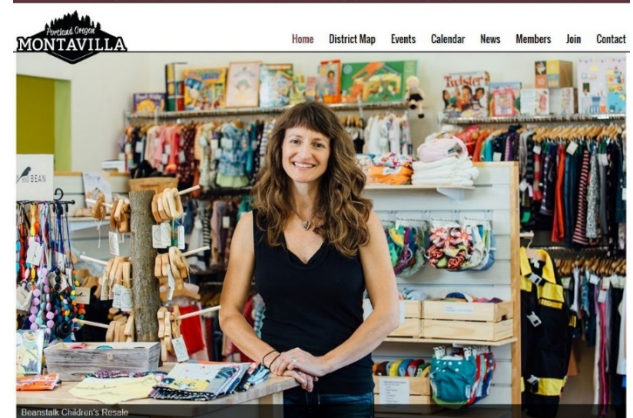
MIDWAY

- NEW 'Midway Money Book' with business coupons/district map
- NEW Website (22% businesses first time online presence)
- NEW 'Business to Buttes' Event linking businesses with outdoor recreation destination (April 2017)



MONTAVILLA/EAST TAVOR

- EXPANDED Trick or Treat on Glisan Street (60% increase in participating businesses)
- EXPANDED Frosty Fest drove 10% increase in sales
- EXPANDED Street Fair with 12,000 attendees (20% increase)
- NEW Website increased membership



EXPLORE MONTAVILLA'S BUSINESS DISTRICT

This section will be quickly growing as our members create their web listings. In the meantime, you can view a nearly complete list of members on our District Map page

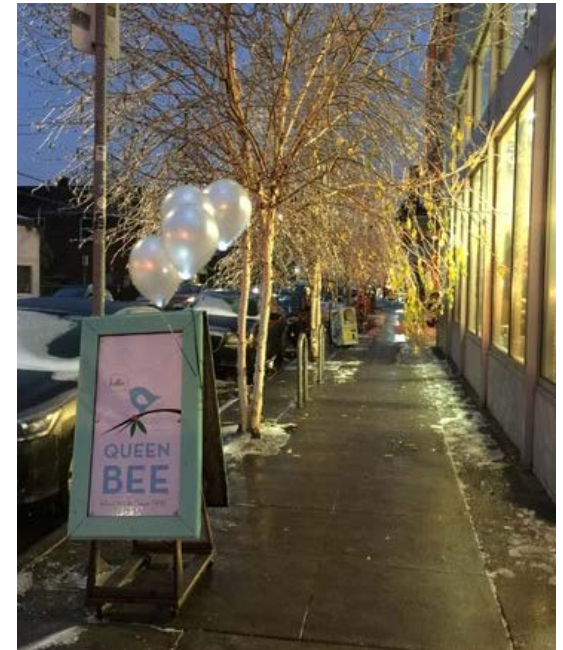
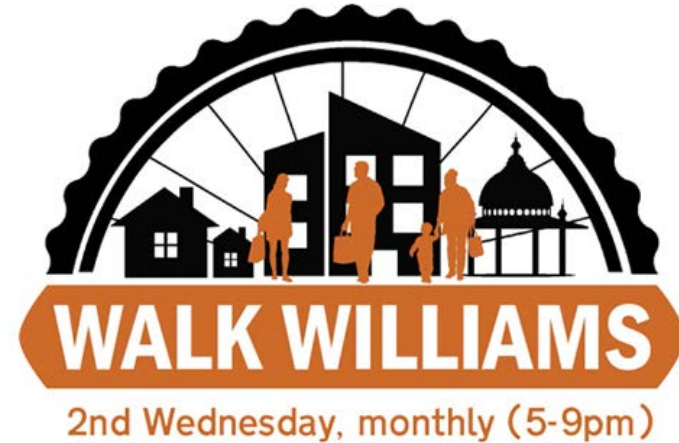
PARKROSE

- EXPANDED Trunk or Treat Event drew 1,100 attendees (43% increase)
- NEW Map promotes district
- NEW Website highlights district businesses



WILLIAMS DISTRICT

- NEW Walk Williams Wednesdays Event encourages exploring rapidly evolving district (Jan-July)
- NEW Shop Williams Late Event increased sales 17%
- EXPANDED Board 300% with diverse new members



CREATIVITY WEATHERS CRISIS

PORTLAND SUPPORTS SMALL BUSINESS COMMUNITY THRU WINTER WEATHER 

PORTLAND'S SMALL BUSINESS COMMUNITY IS WHAT MAKES PORTLAND INSPIRING AND AMAZING. IT IS ALSO THE ECONOMIC ENGINE FOR THE CITY.

THE 2016-17 WINTER WEATHER HAS BEEN A GREAT CHALLENGE TO ALL EMPLOYED IN OUR SMALL BUSINESS COMMUNITY.

PLEASE MAKE A CONSCIOUS EFFORT TO GET OUT THERE AND SUPPORT LOCAL SMALL BUSINESSES. THE FOLLOWING BUSINESSES WILL BE OFFERING 10% OFF ALL GIFT CERTIFICATES THRU JAN 25*



PARTICIPATING BUSINESSES:

BLACK BAZON - BLUYN GATE - SPICEWORK - BROWN BELL - NORTH PORTLAND WELLNESS CENTER - COLLAGE
 BREXON BOX - BOLD FABRIC - BOLDING - ESCAPE - CIGARETTE PETSALS - ALMA CHOCOLATES - DAZ - NER LOOD
 JANE COBAIN WAIRING - FOCAL - BAMB BOCCI - ROMA TRACON - YACULA - PORTCHANCE - BOM - EB AND ELIAN
 MANDERLIST - WILDCHEATS - VIA CHICAGO - CRAFTY WOODS/PLAND - COMMON - STORMBREAKER
 AJORN - BILD - EXPEDIENT - BEACT - HILFPINT - NELLWOOD MORNING - JIM AND PEARL - TAJER - MALABROS
 FLUTTER - ANGIO - BLACON SOUND - SONNET - SMALL FRY - POLLY - MODERN DOMESTIC - HUX AND FLOW - BUBBA
 WELLS & VETINE - 8 CHILDREN'S PLACE BOOKS - DOPPY ONE - SHAYLING JEWELRY - CRISP - CARO - SOMETHINGS

*FOR MORE INFO VISIT <http://www.lyft.com> OR VISIT www.seportland.com



SATURDAY OF GIVING


NW 23RD EMPLOYEE RELIEF AND REBUILDING BENEFIT

Shop, snack, and sip while giving back to neighboring businesses.

SATURDAY, NOVEMBER 12, ALL DAY

Every \$5 donated gets you ticket entered into the raffle, with prizes from:

Brooklyn Industries	Hip Hound
Child's Play	Marine Layer
EcoVibe Apparel	McMenamins Rams Head
Escape From New York Pizza	The Portland Spirit
	Ether
Goorin Brothers	Slabtown Tours
	And many more!

 Use Validated for your trip and earn credits towards Lyft, Uber, and Biketown!

All of the donated proceeds will go directly to employees and businesses affected.

SOUTHEAST PORTLAND STANDS TOGETHER

THESE ARE OUR VALUES:

Due to recent events, your local business and neighborhood associations feel it is important to state that:

We value DIVERSITY and TOLERANCE

Our community is made of ALL KINDS of people. We have different beliefs and different family structures. We come from all over the world, but we all call Southeast Portland our home.

We all deserve a SAFE place to live and work.

We STAND TOGETHER against harassment and discrimination.

Co-authored by:

- 82nd Avenue of Roses Business Association
- Brentwood-Darlington Neighborhood Association
- Foster Area Business Association
- Foster-Powell Neighborhood Association
- Mt. Scott-Arleta Neighborhood Association

IT'S WORKING

Our continued **PARTNERSHIP** and **RECOGNITION** of the **VALUE** of Venture Portland and neighborhood business districts **DRIVES** Portland's **ECONOMY**.



2017-2018 INVESTMENT

Continue Venture Portland Funding

Strengthen Catalytic Investment Initiative (Pilot Project) for East and North Portland Business Districts

\$200,000

- **9** Business Districts in East/North Portland
- **6,156** Businesses (**33%** neighborhood businesses in Portland)
- **4.5** Business District Organizers



VENTURE PORTLAND MEANS BUSINESS

The business of Portland is about more than business. It's about people, neighborhoods and culture. It's about finding the right space. Raising capital. Creating jobs. And being flexible. It's about passion. And dedication. And starting something because you believe your idea is THE IDEA.

It's about a vision for our city. One that business owners, residents and government officials share. A vision that celebrates the individualism and distinct flavor that makes Portland Portland. The knowledge that our diverse neighborhoods and unique views make up the very fabric that binds our city together.

The business of Portland is about a lot more than just business. It's about growing business and connecting neighborhoods to make more out of the neighborhood business districts we call home.

ST. JOHNS
GOOSE HOLLOW
SWAN ISLAND
CENTRAL EASTSIDE
UNIVERSITY PARK
KENTON
FOSTER
N. WILLIAMS
MONTAVILLA/EAST TABOR
WOODSTOCK
82ND AVE
OVERLOOK VILLAGE
BEAUMONT
WESTMORELAND
SELLWOOD
N/NE
PARKROSE
LLOYD
NOB HILL
PEARL DISTRICT
42ND AVE
BURNSIDE EAST

VENTURE PORTLAND

Growing Business. Connecting Neighborhoods.

OLD TOWN CHINATOWN
GATEWAY
MIDWAY
GREATER BROOKLYN
N. PORTLAND
DIVISION/CLINTON
HAWTHORNE
NW INDUSTRIAL
HOLLYWOOD
ALBERTA
BELMONT
MISSISSIPPI AVE
INTERSTATE
COLUMBIA CORRIDOR
S. PORTLAND
HILLSDALE
PORTLAND INTERNATIONAL
NE BROADWAY

ventureportland.org



@ventureportland