



VIEW FROM NORTH



VIEW FROM WEST



VIEW FROM SOUTH



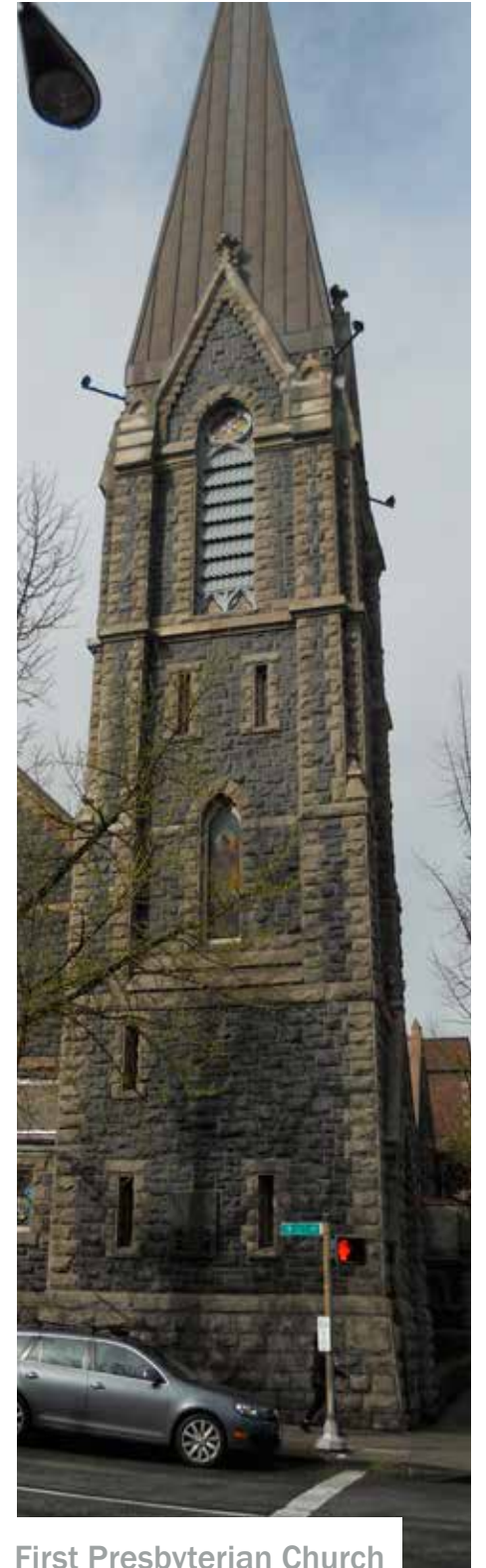
Sentinel Hotel



Skylab

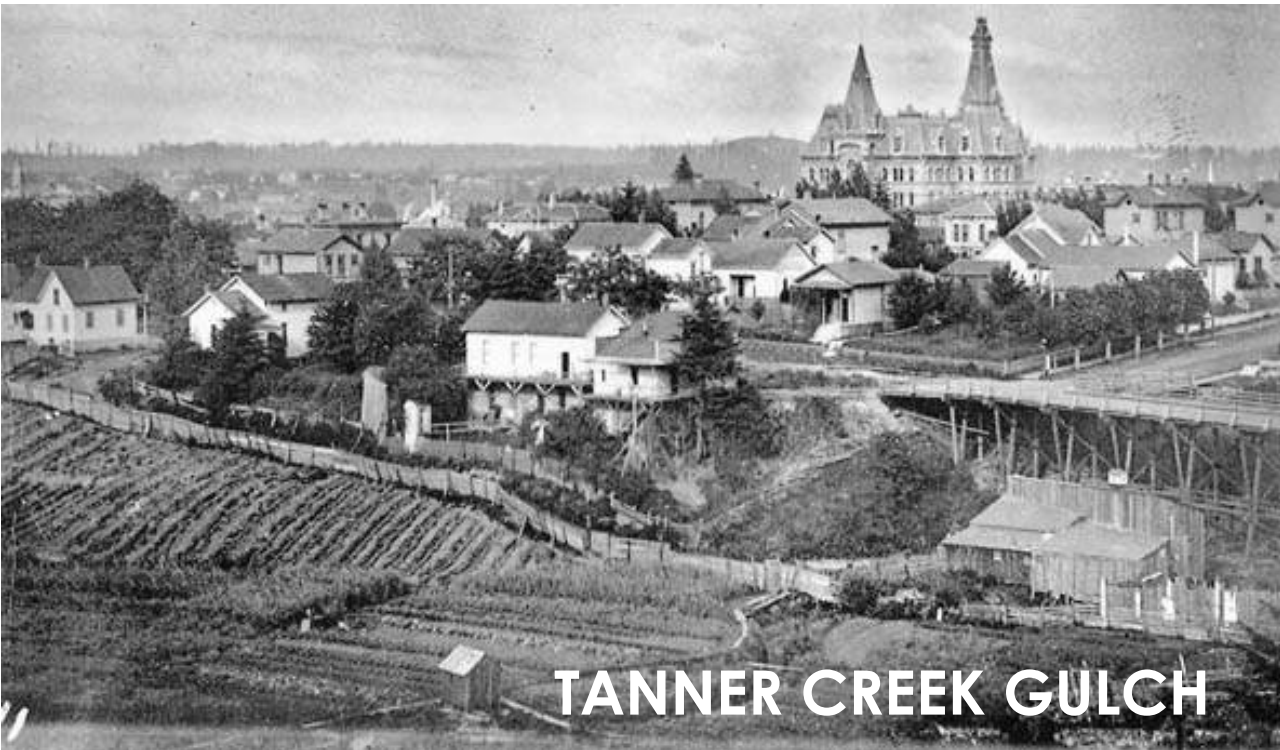


Twelve West



First Presbyterian Church

HISTORICAL CONTEXT

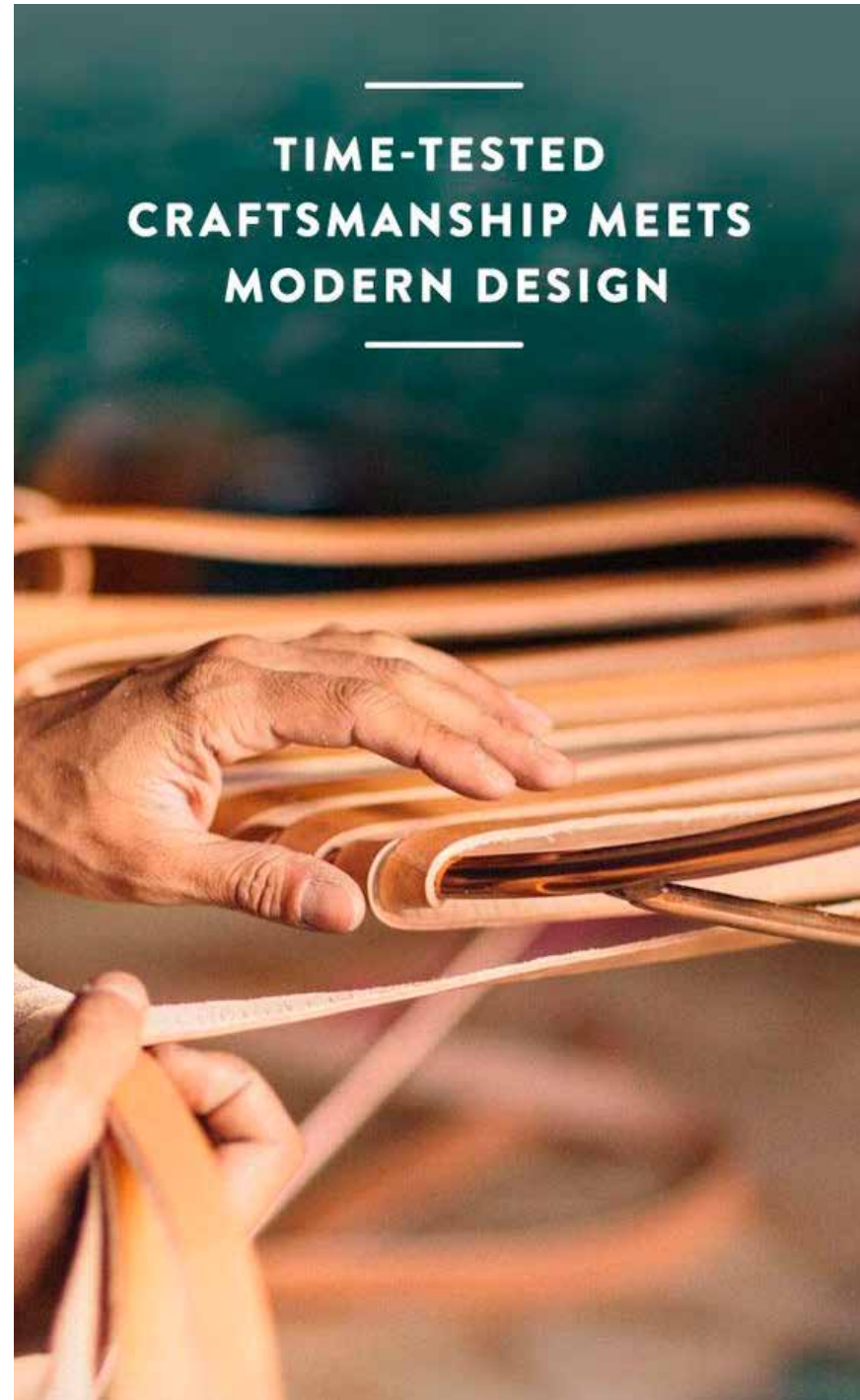


TANNER CREEK GULCH

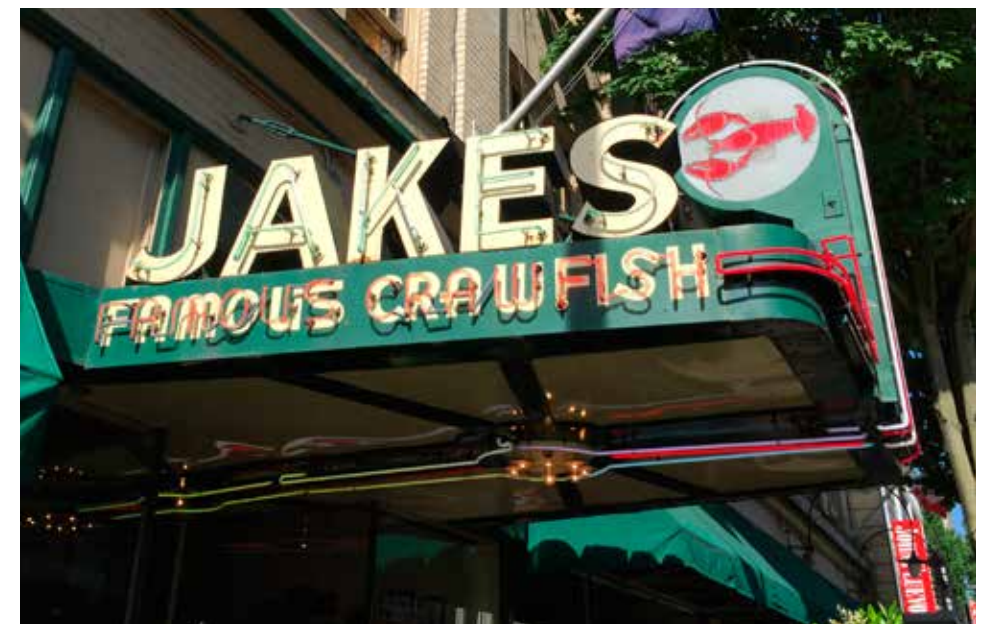


SW 11TH AND ALDER LOOKING WEST - 1963

RANGE OF CRAFT

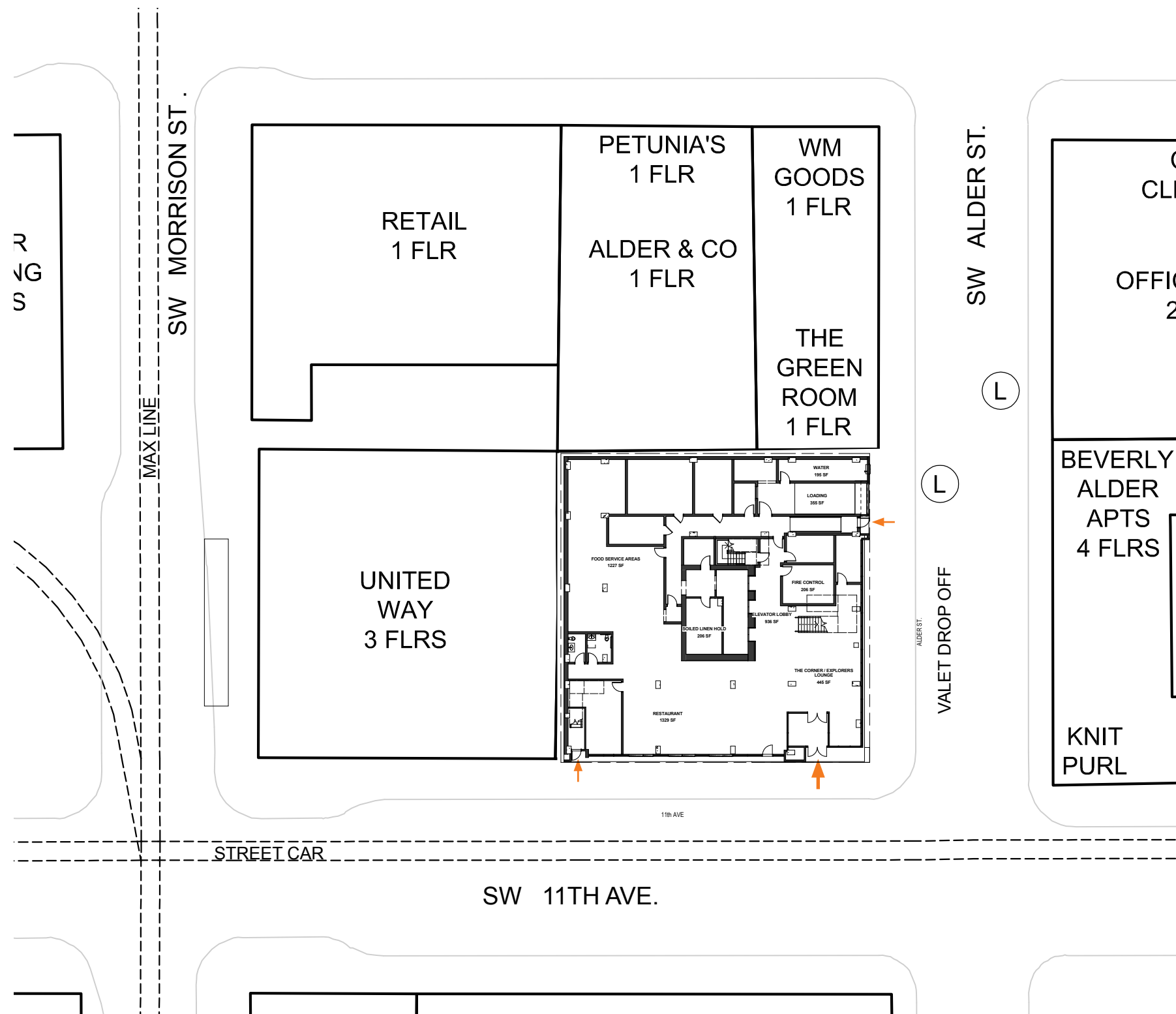


CONTEMPORARY AND CLASSIC



CONNECTION TO NATURE





BUILDING NARRATIVE

THIS PROJECT IS A NEW 15 STORY HOTEL AT THE INTERSECTIONS OF SW 11TH AVENUE AND SW ALDER STREET IN THE CENTRAL CITY PLAN DISTRICT AND WEST END SUBDISTRICT IN PORTLAND, OREGON. THE PROJECT CONSISTS OF TWO PUBLIC/SERVICE LEVELS WITH 13 GUEST ROOM LEVELS ABOVE. THE STRUCTURE IS CAST IN PLACE AND POST TENSIONED CONCRETE.

- (L) LOADING ACCESS
- (P) PARKING ACCESS

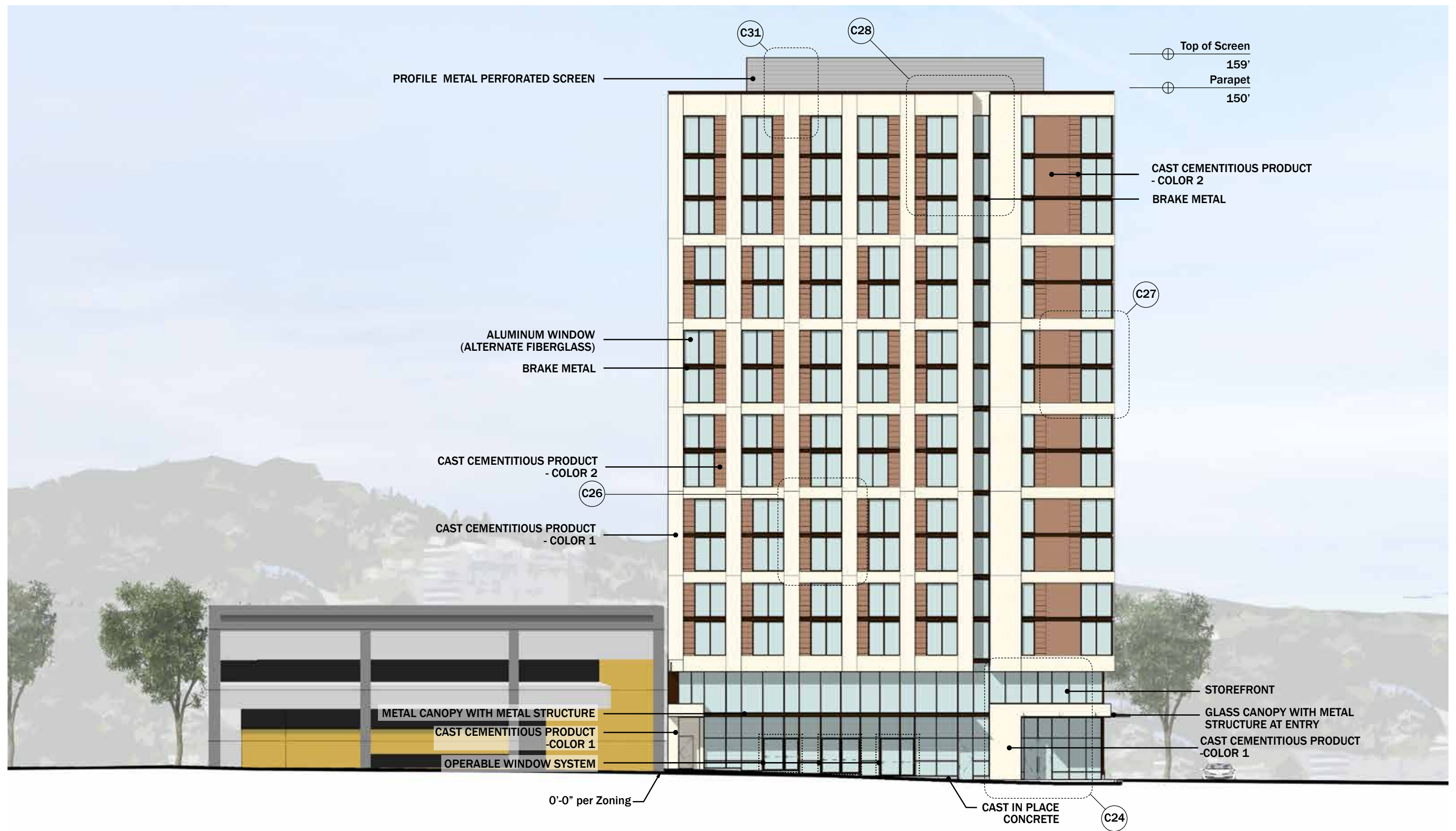


STREET LEVEL PERSPECTIVE FROM SOUTHEAST

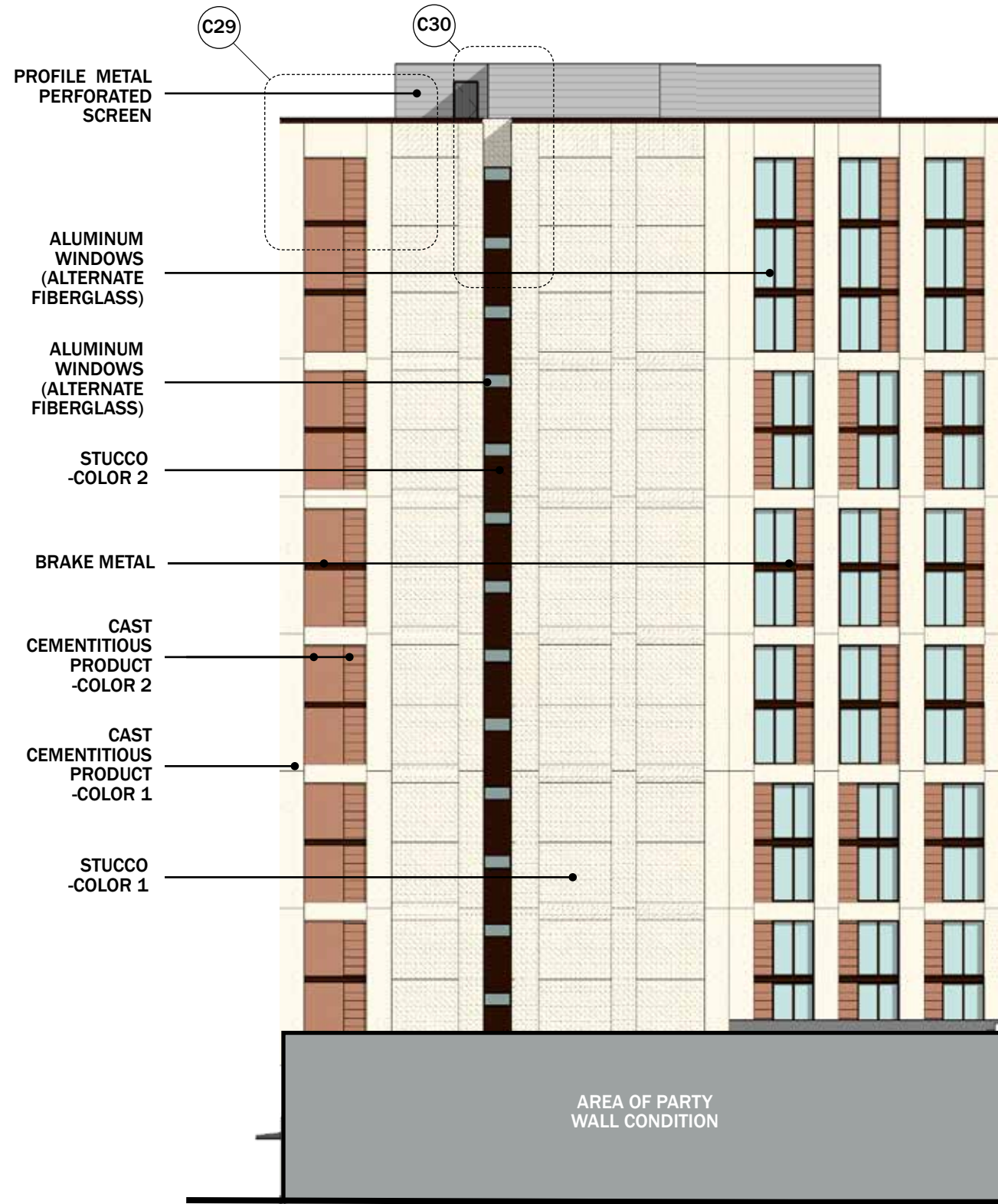




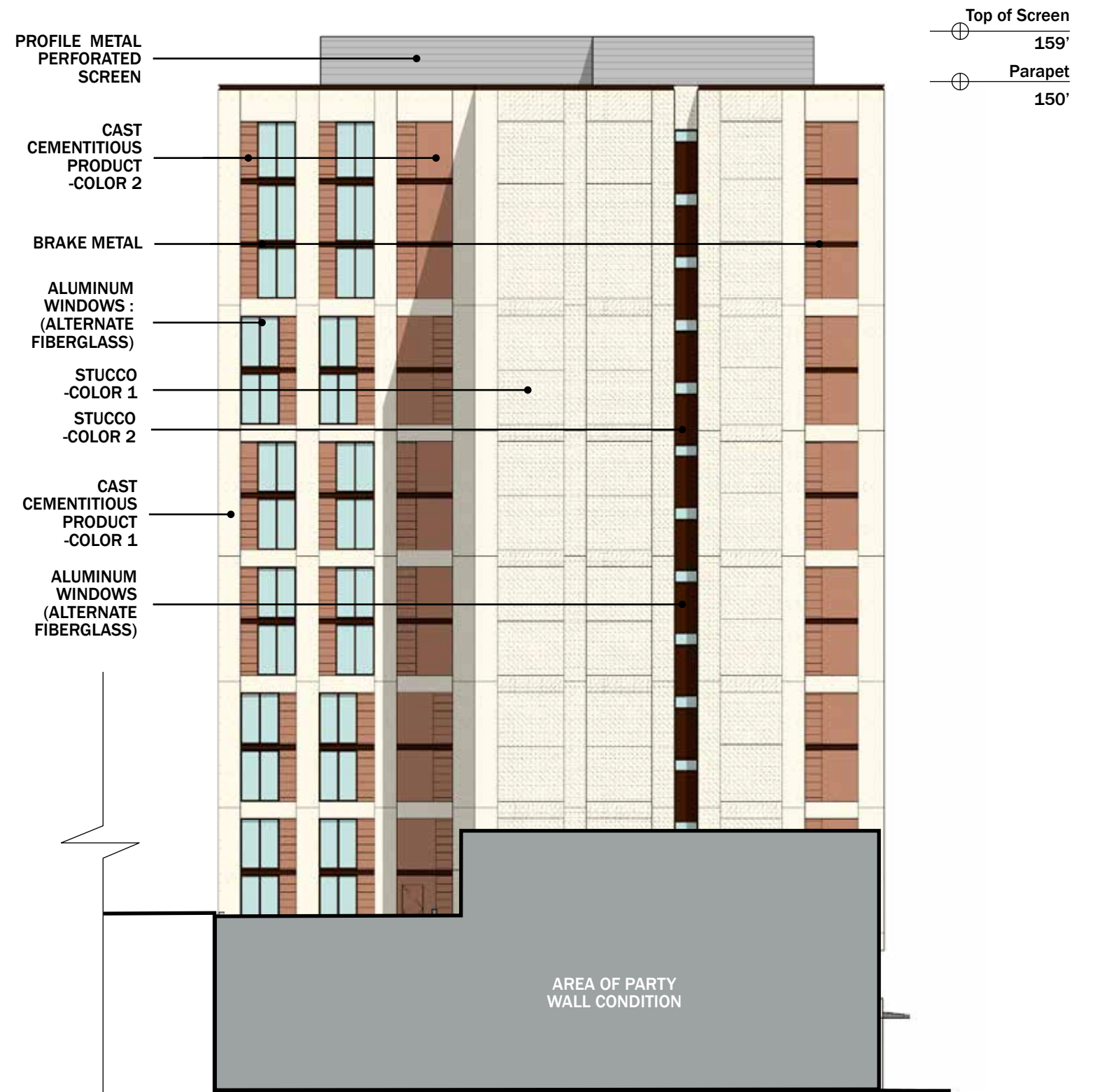
STREET LEVEL PERSPECTIVE FROM SOUTHEAST - NIGHT







WEST ELEVATION



SOUTH ELEVATION

ELEVATIONS

0' 5' 10' 20'

DESIGN REVIEW #LU 16-144846 DZM, AD

C23



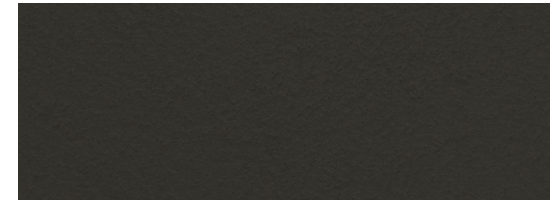
cast cementitious product, color 1



cast cementitious product example



stucco system fine finish, color 1



stucco system fine finish, color 2



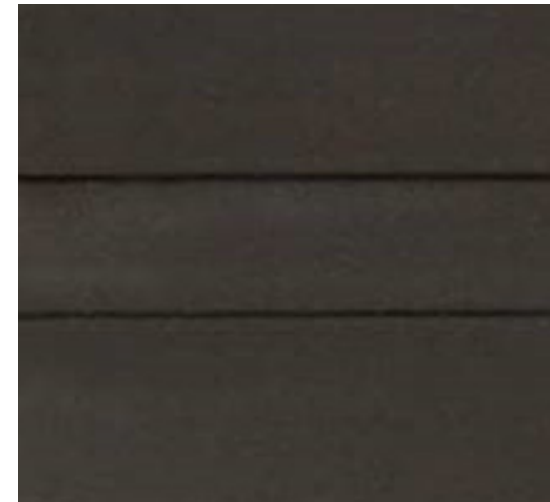
aluminum windows,
color: bronze



cast cementitious product, color 2



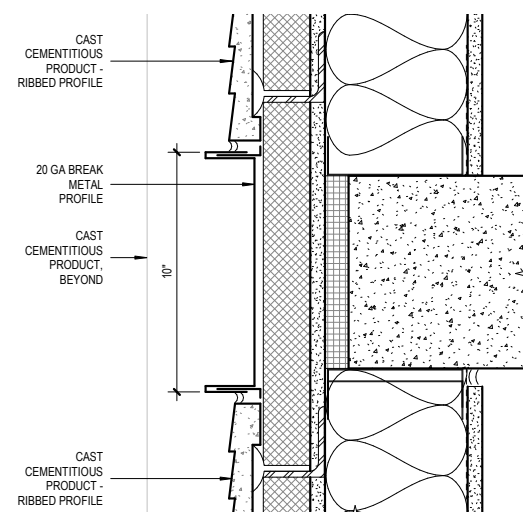
cast cementitious product example



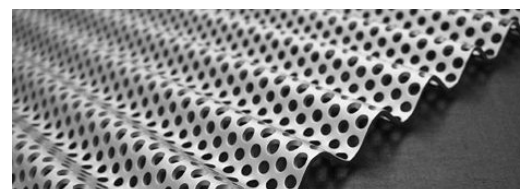
break metal panel color: bronze



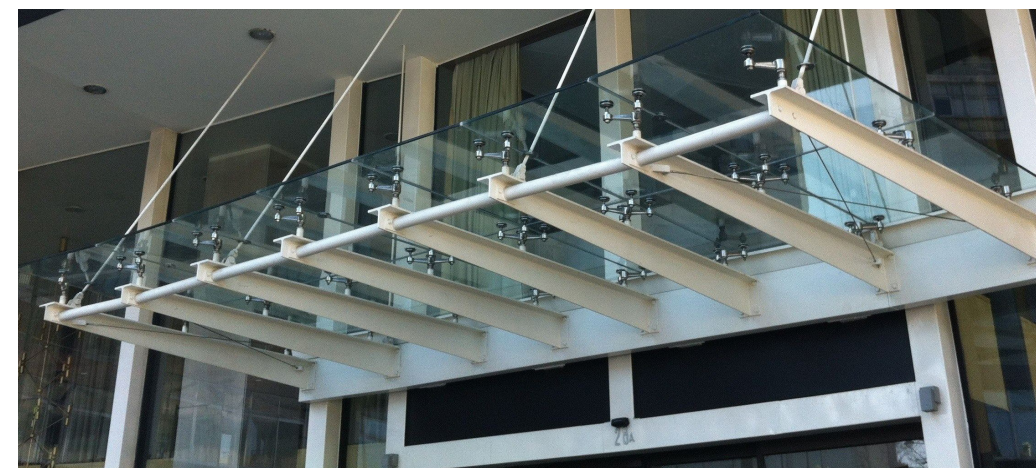
aluminium storefront system:
color: bronze



cast cementitious product lapped profile

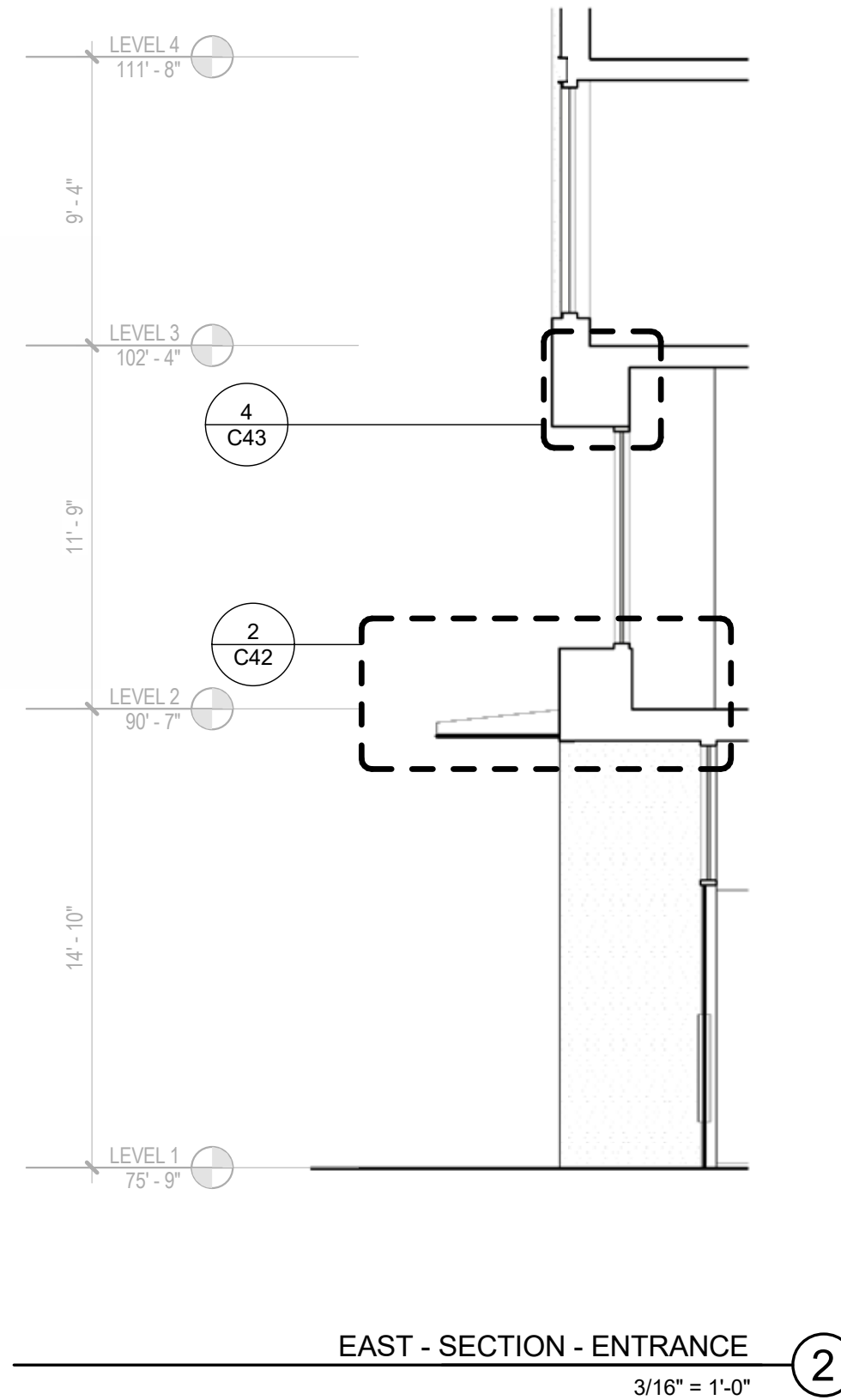
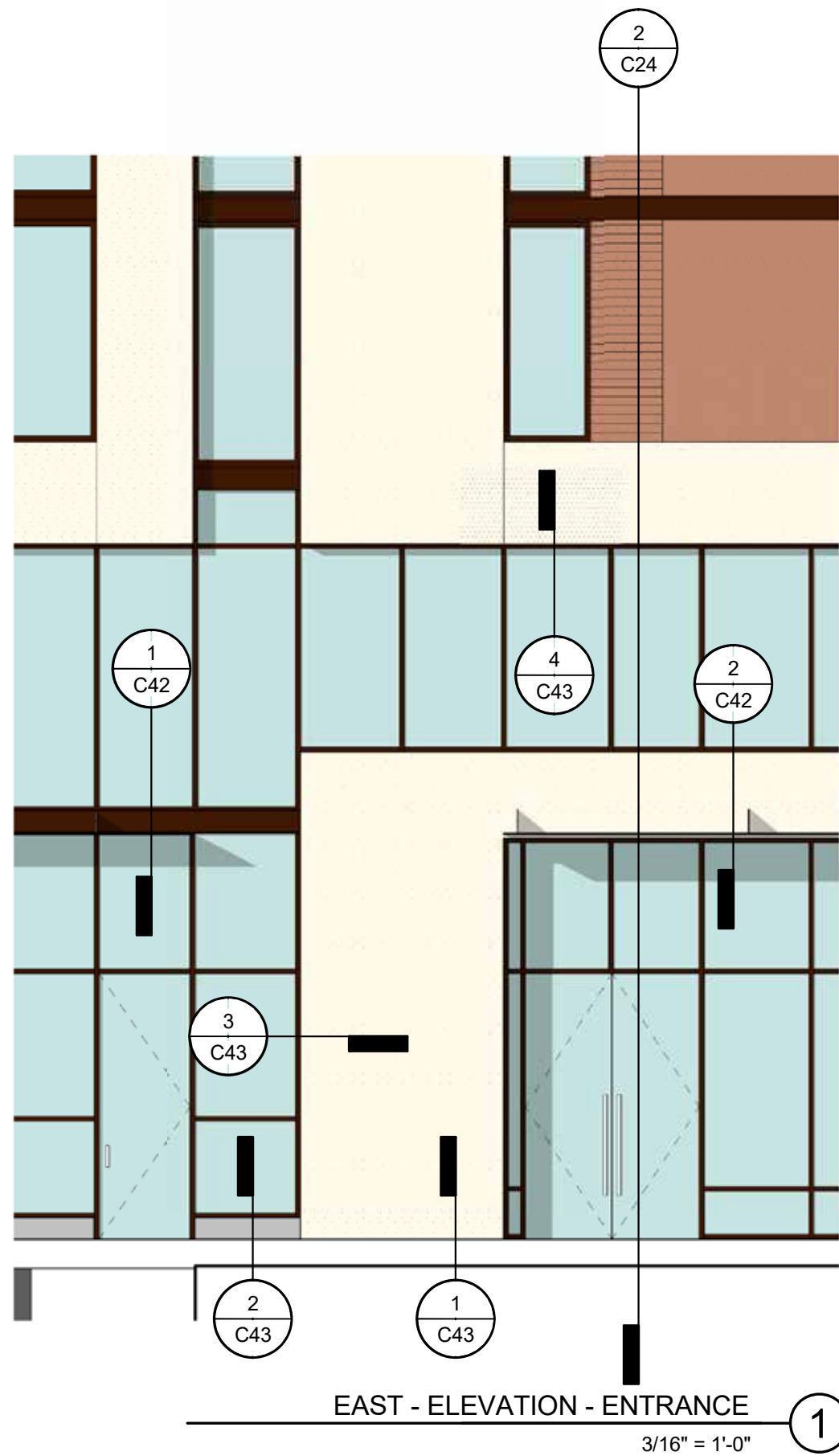


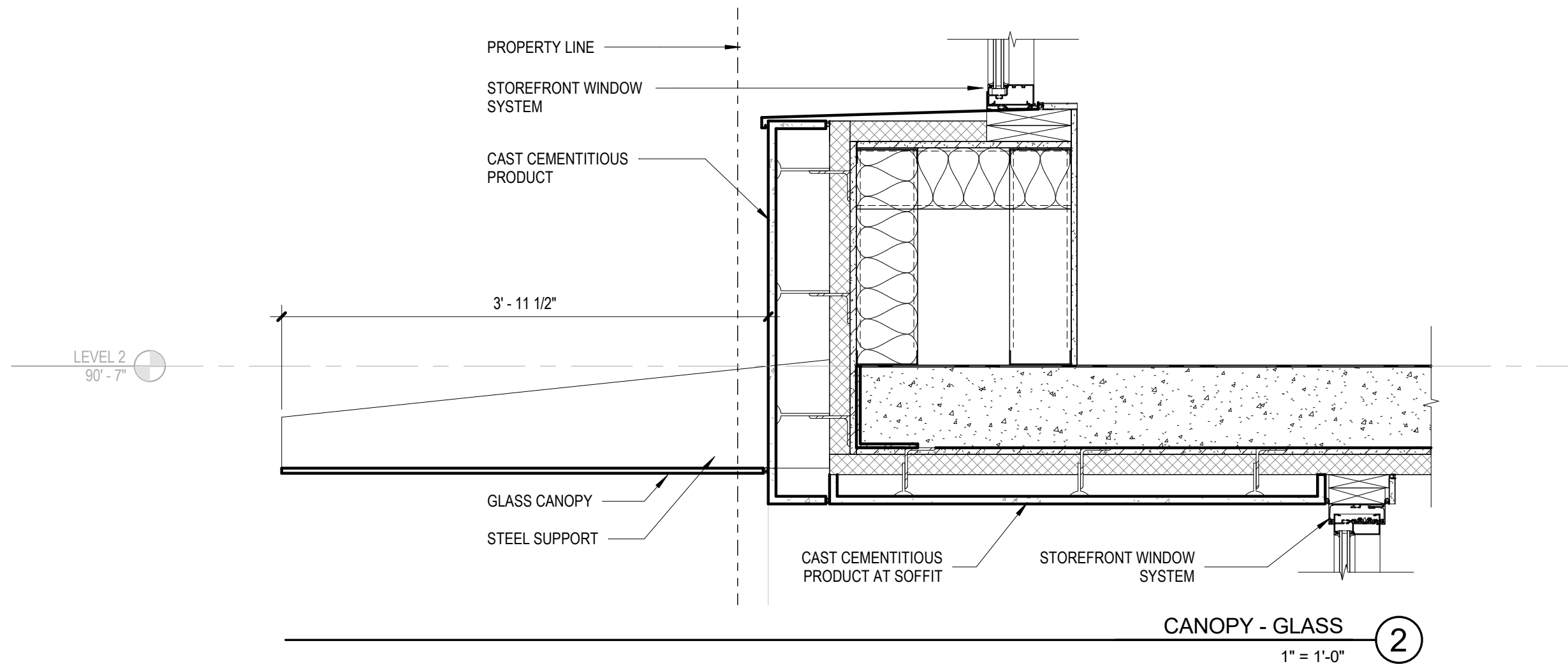
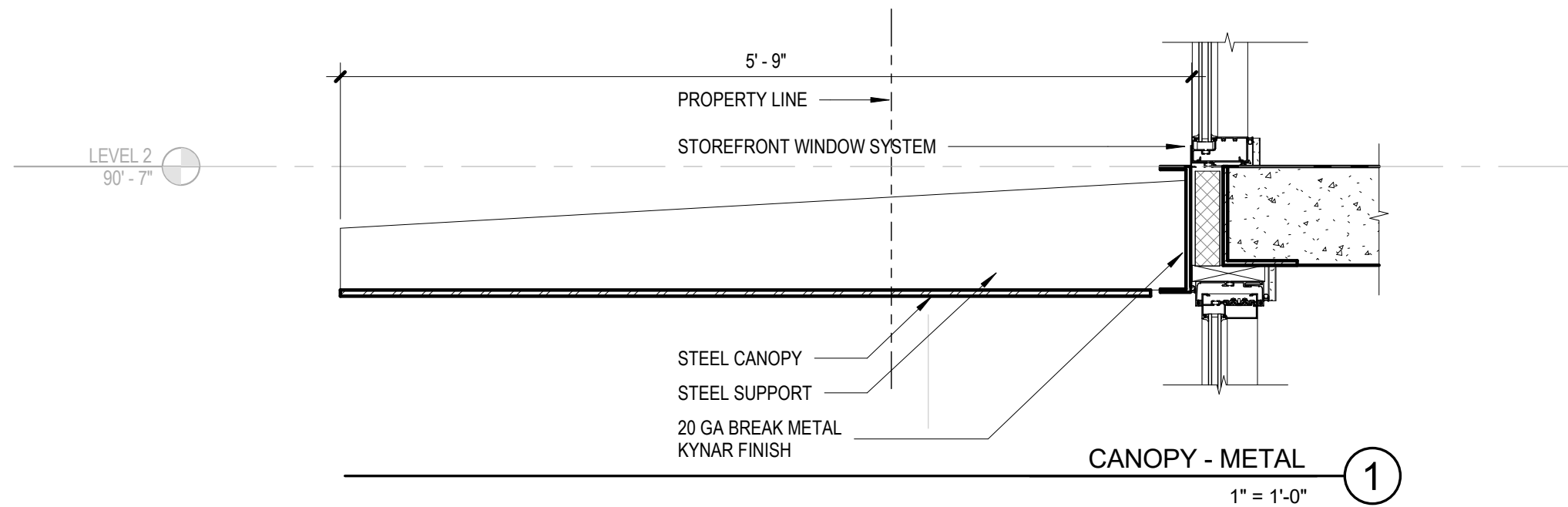
perforated corrugated metal panel at
rooftop mechanical screens

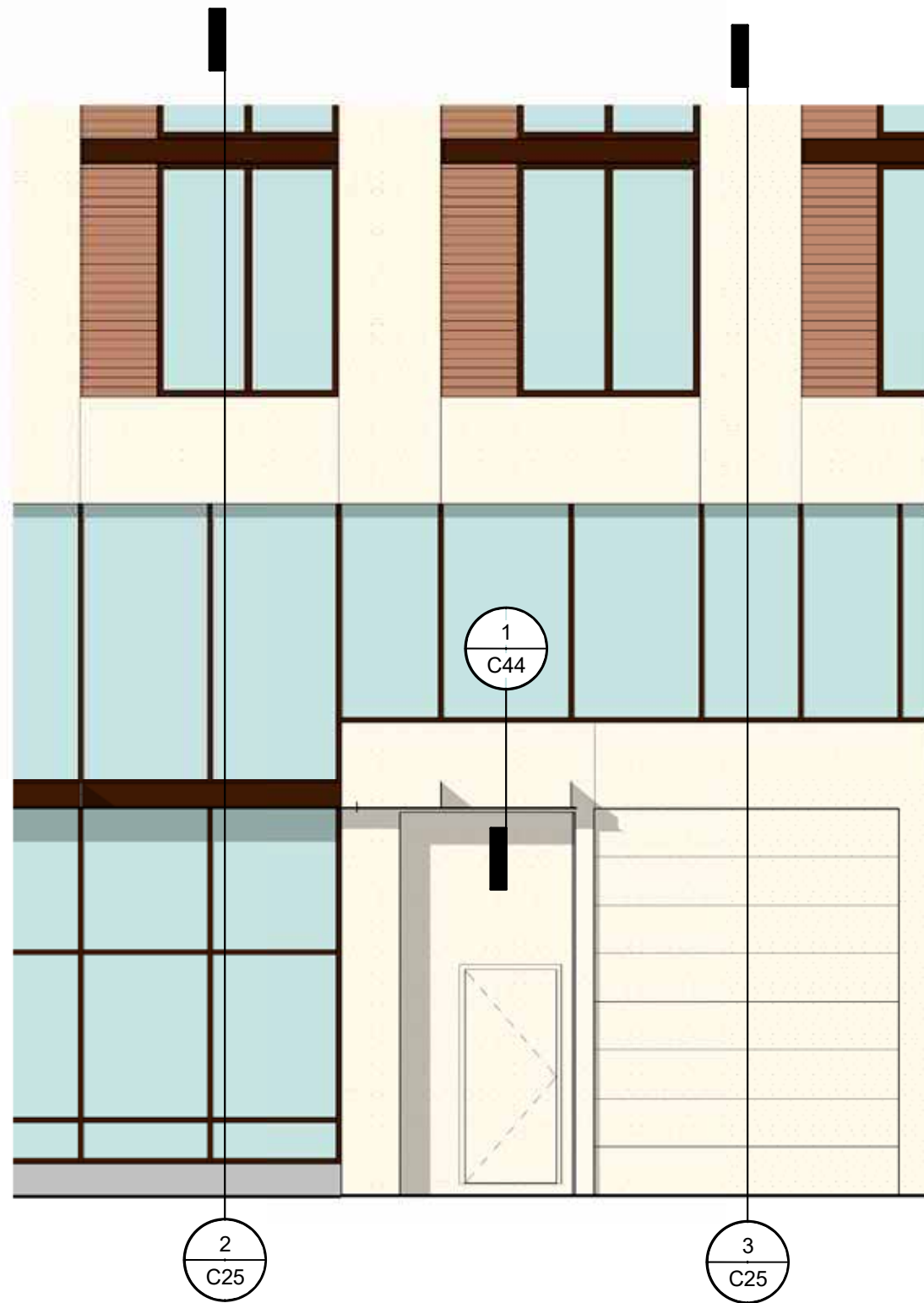


glass and metal panel canopy: panel point supported canopy system





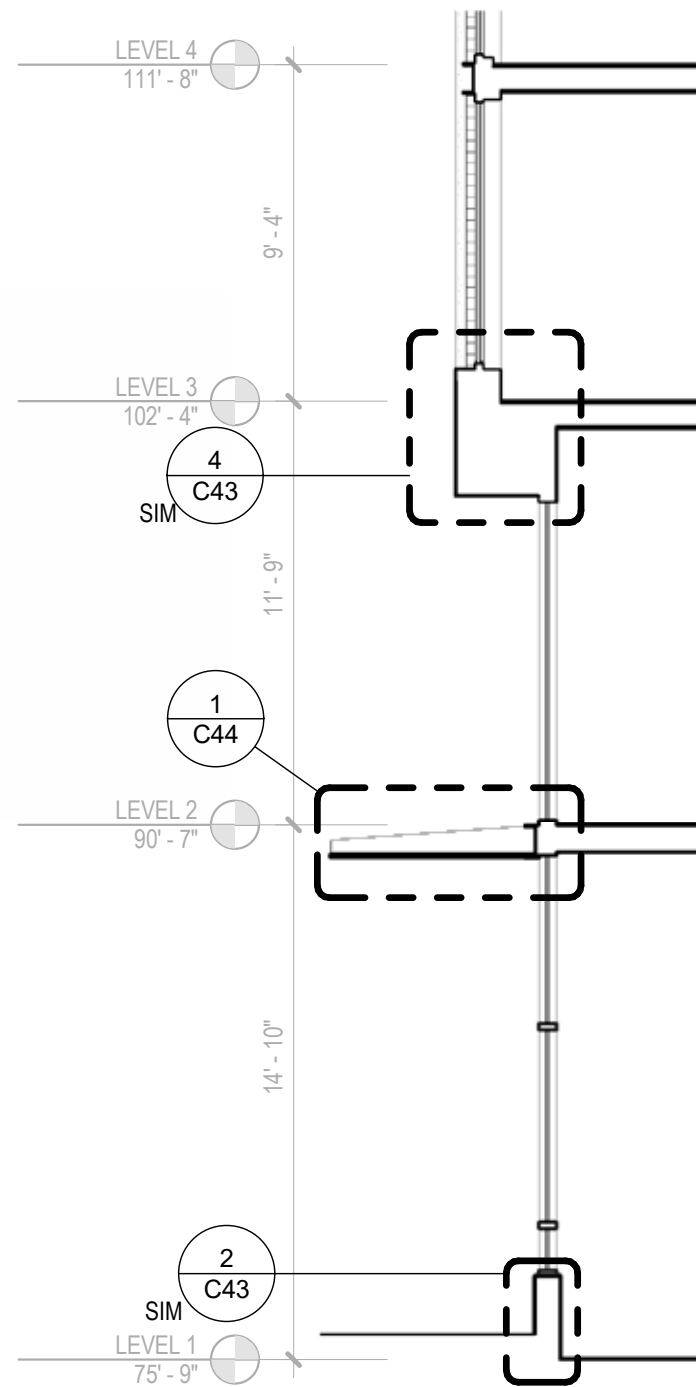




NORTH - ELEVATION - OFFICE + LOADING

3/16" = 1'-0"

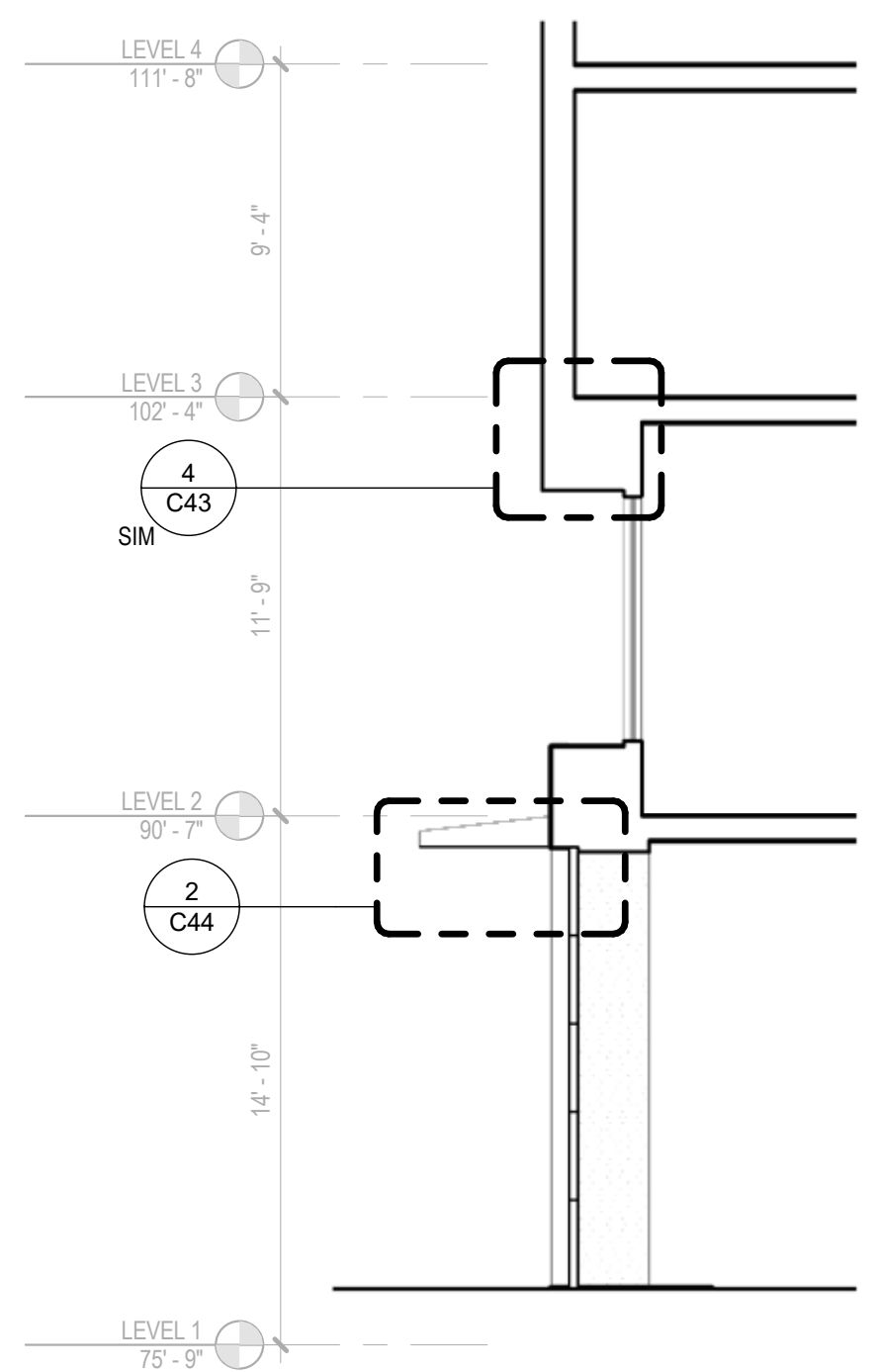
1



NORTH - SECTION - OFFICE

3/16" = 1'-0"

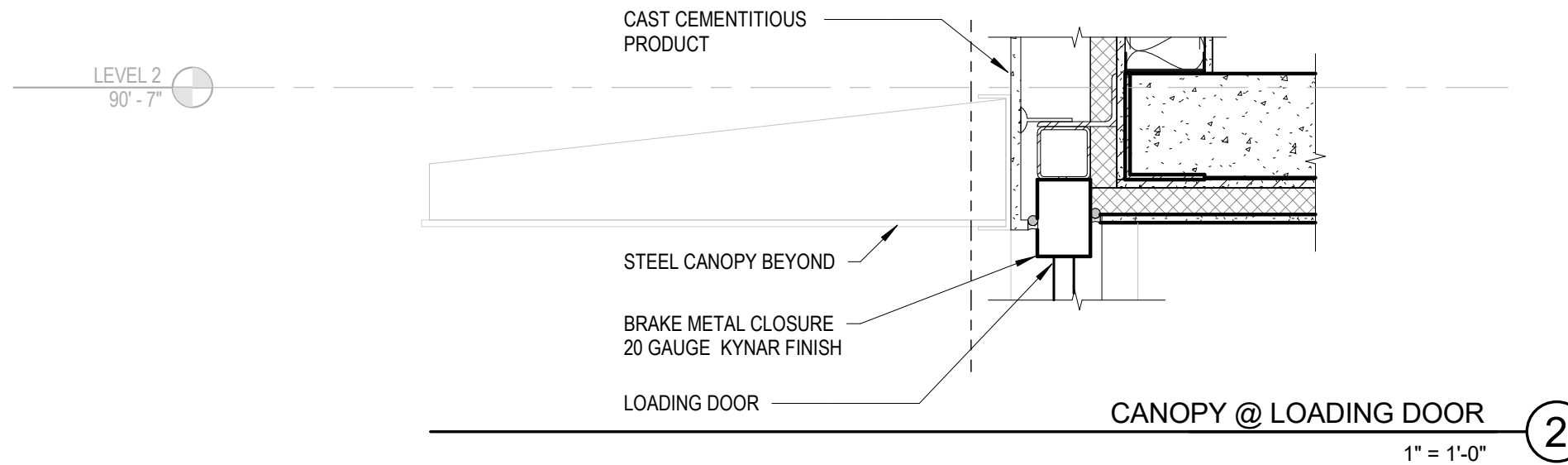
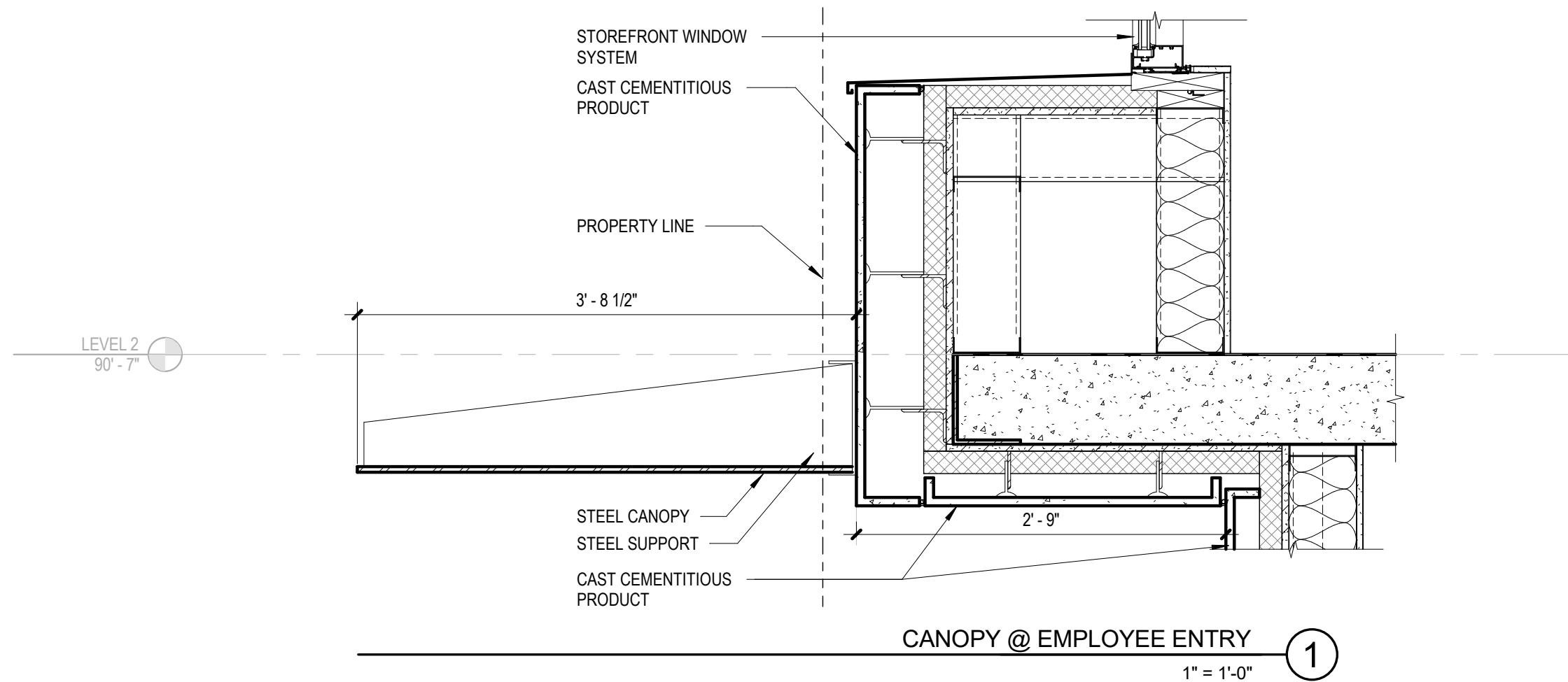
2



NORTH - SECTION - LOADING

3/16" = 1'-0"

3

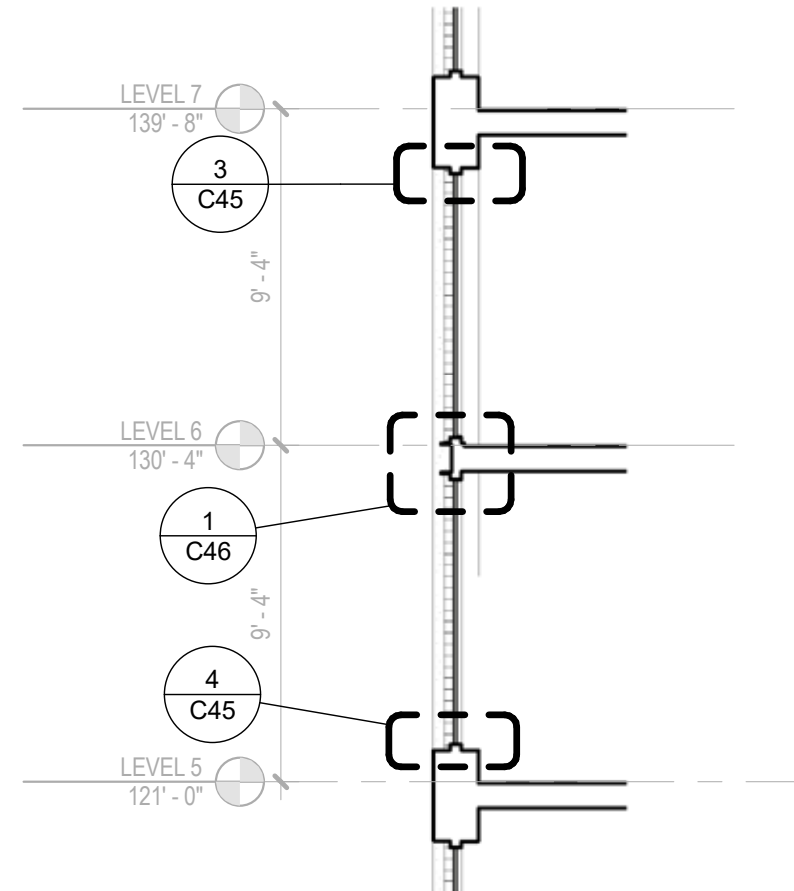




EAST - ELEVATION - WINDOW

3/16" = 1'-0"

1



EAST - SECTION - WINDOW

3/16" = 1'-0"

2

CAST
CEMENTITIOUS
PRODUCT

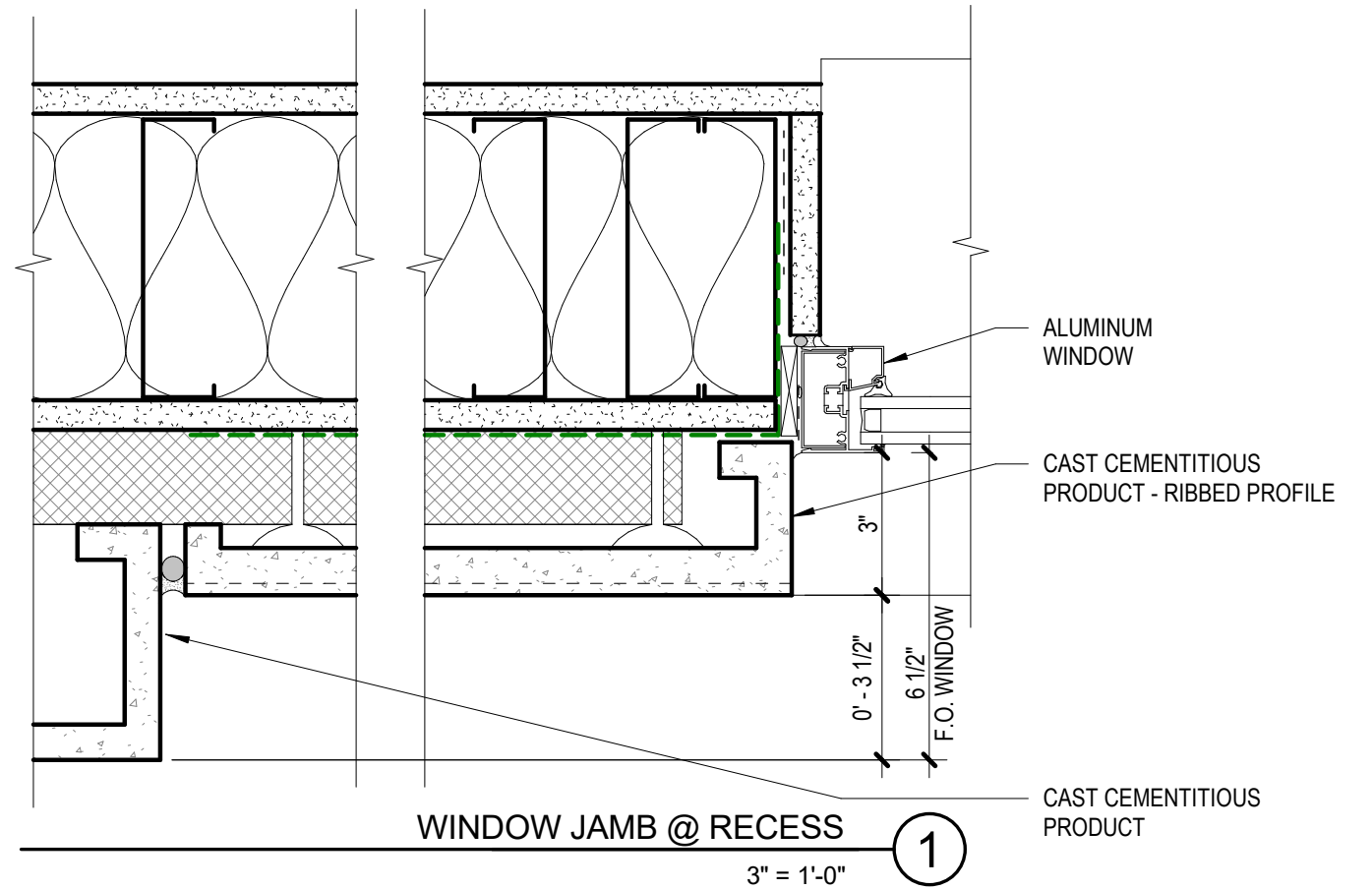
ALUMINUM
WINDOW

6 1/2"
F.O. WINDOW

WINDOW HEAD

3" = 1'-0"

3



ALUMINUM
WINDOW

BRAKE METAL SILL
FLASHING 20 GAUGE
KYNAR FINISH

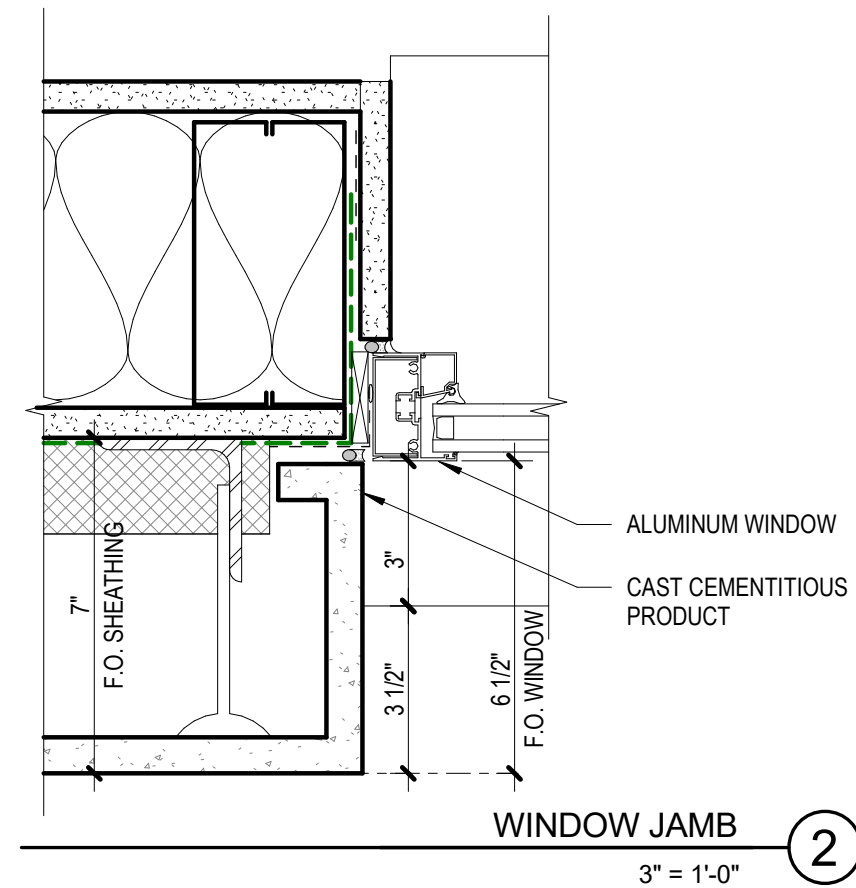
CAST
CEMENTITIOUS
PRODUCT

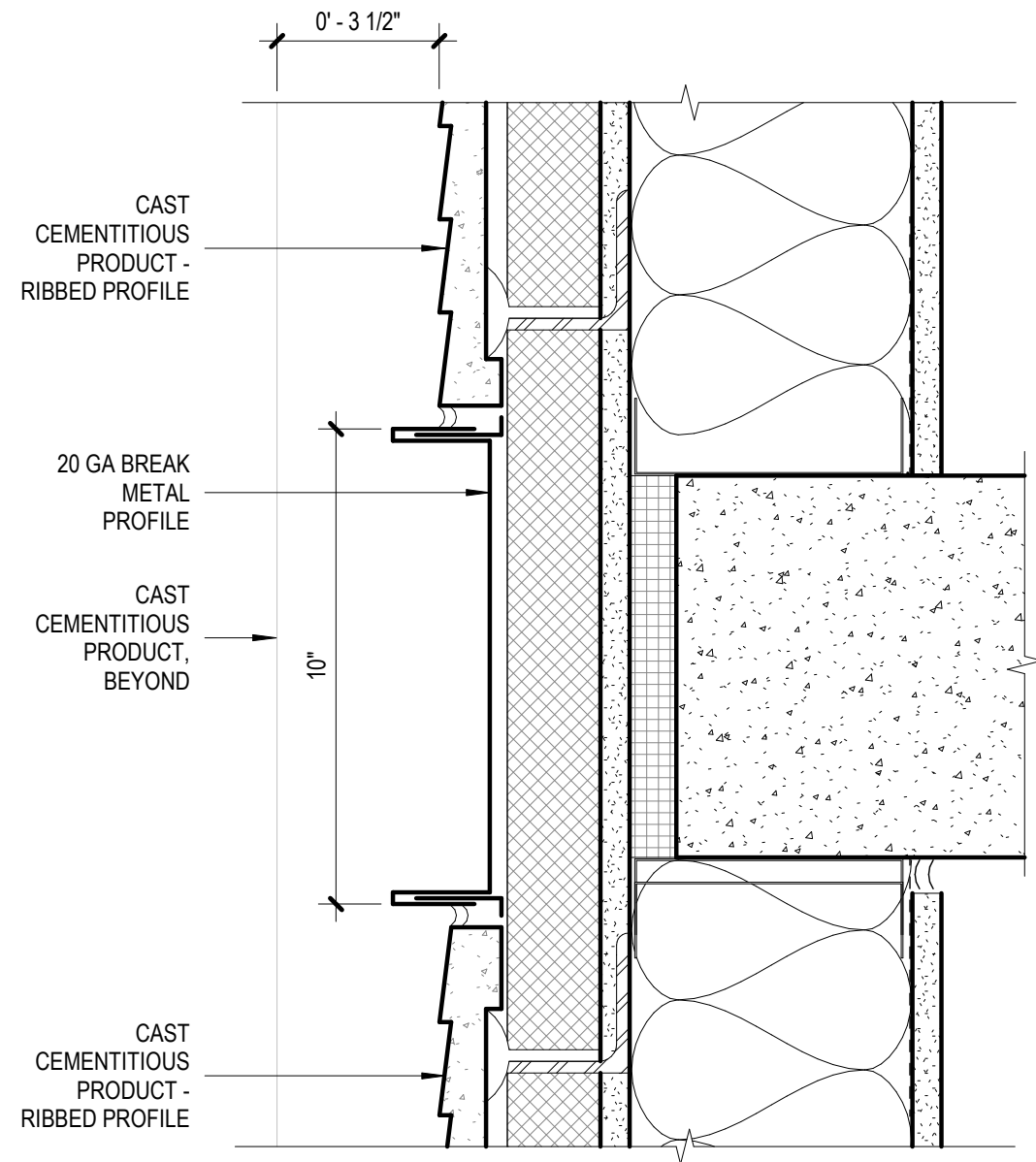
6 1/2"
F.O. WINDOW

WINDOW SILL

3" = 1'-0"

4

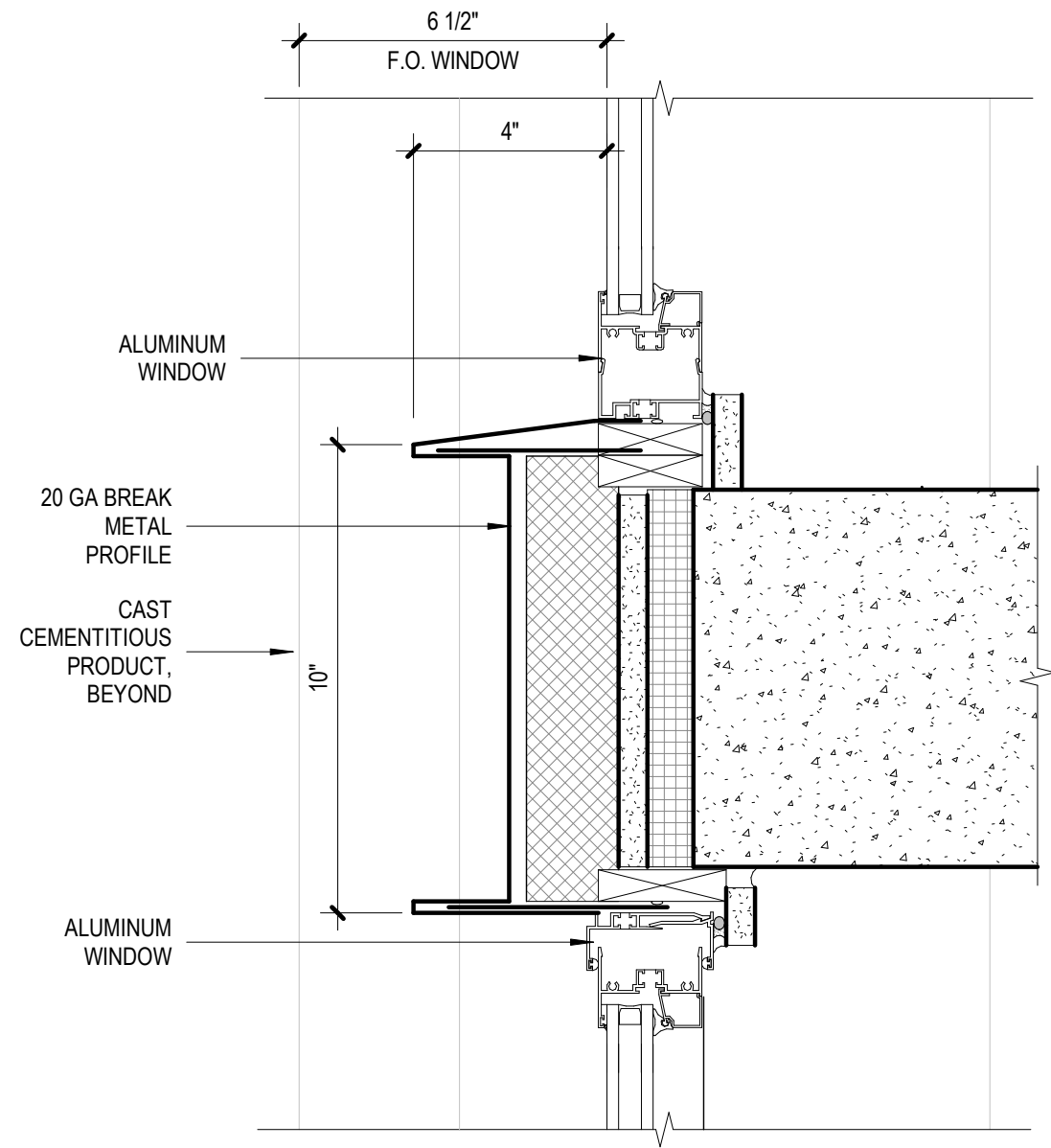




SLAB EDGE @ PANEL

3" = 1'-0"

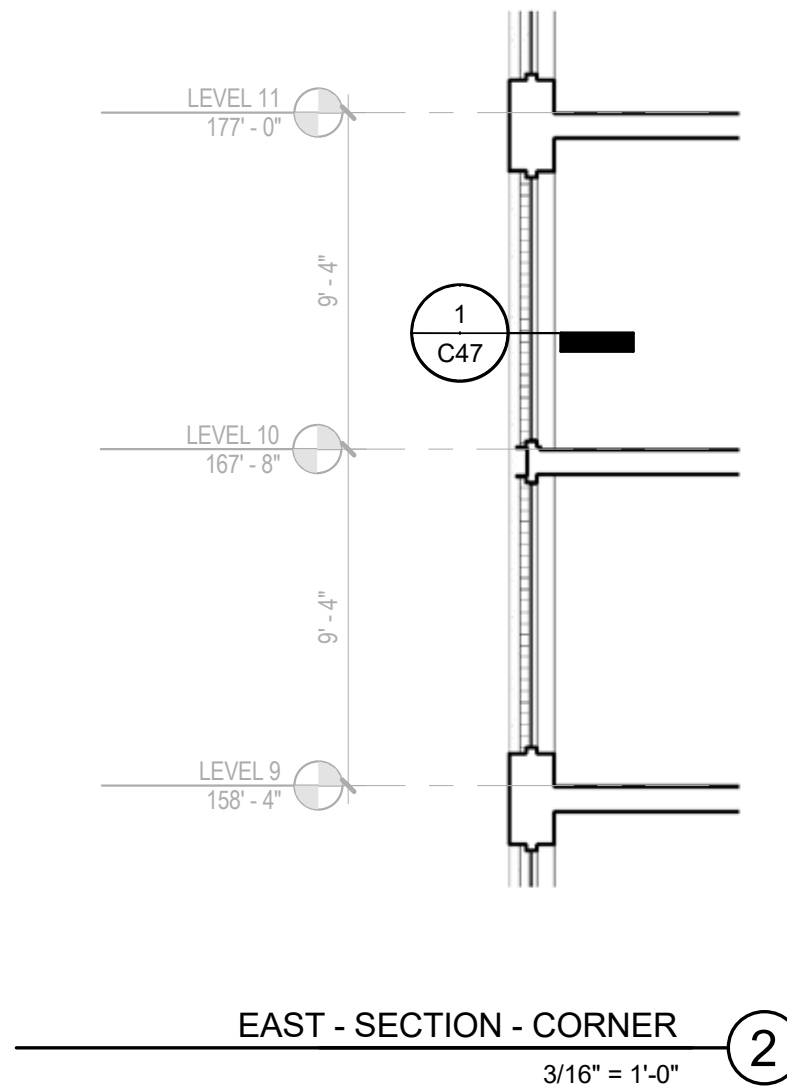
2

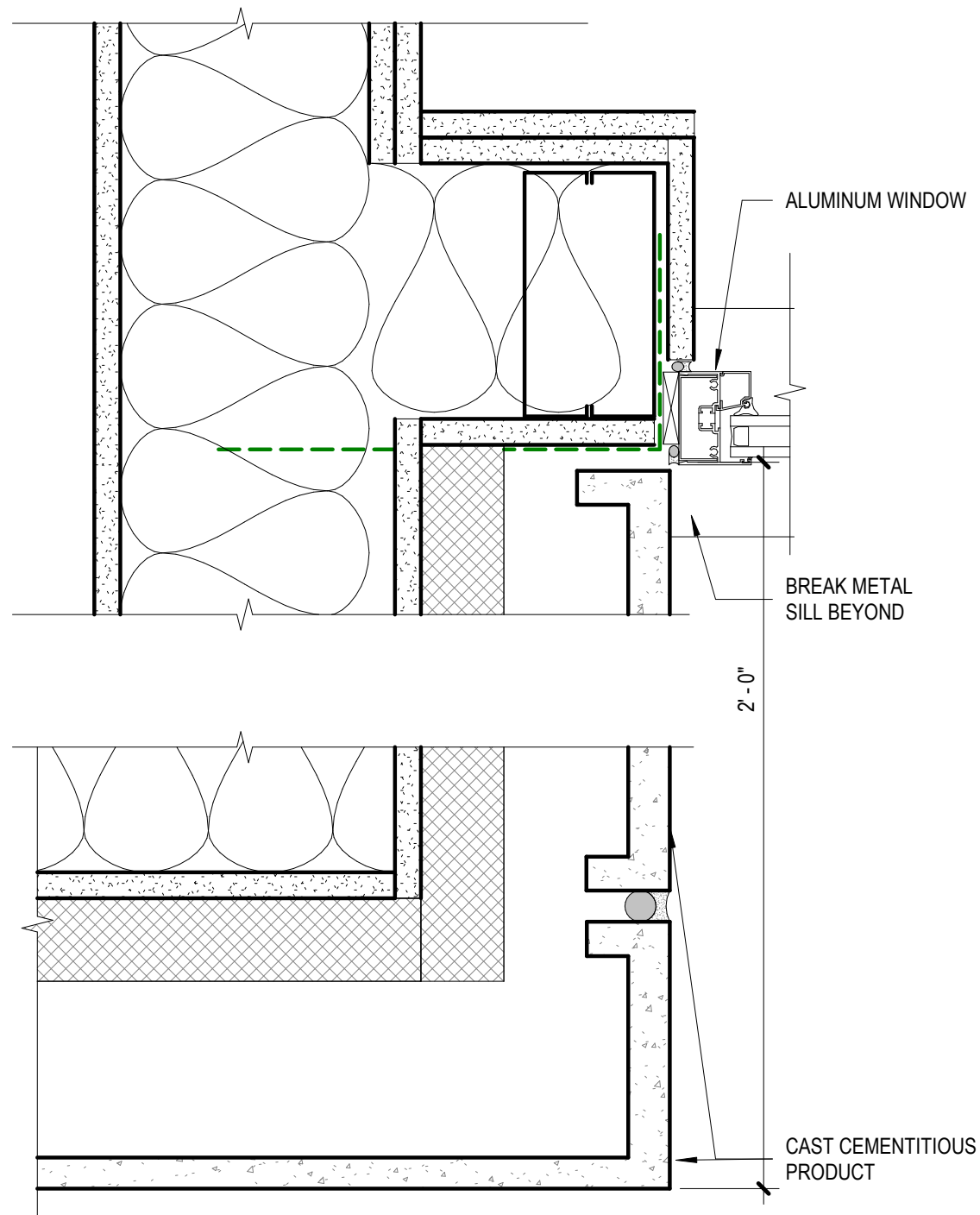


SLAB EDGE @ WINDOW

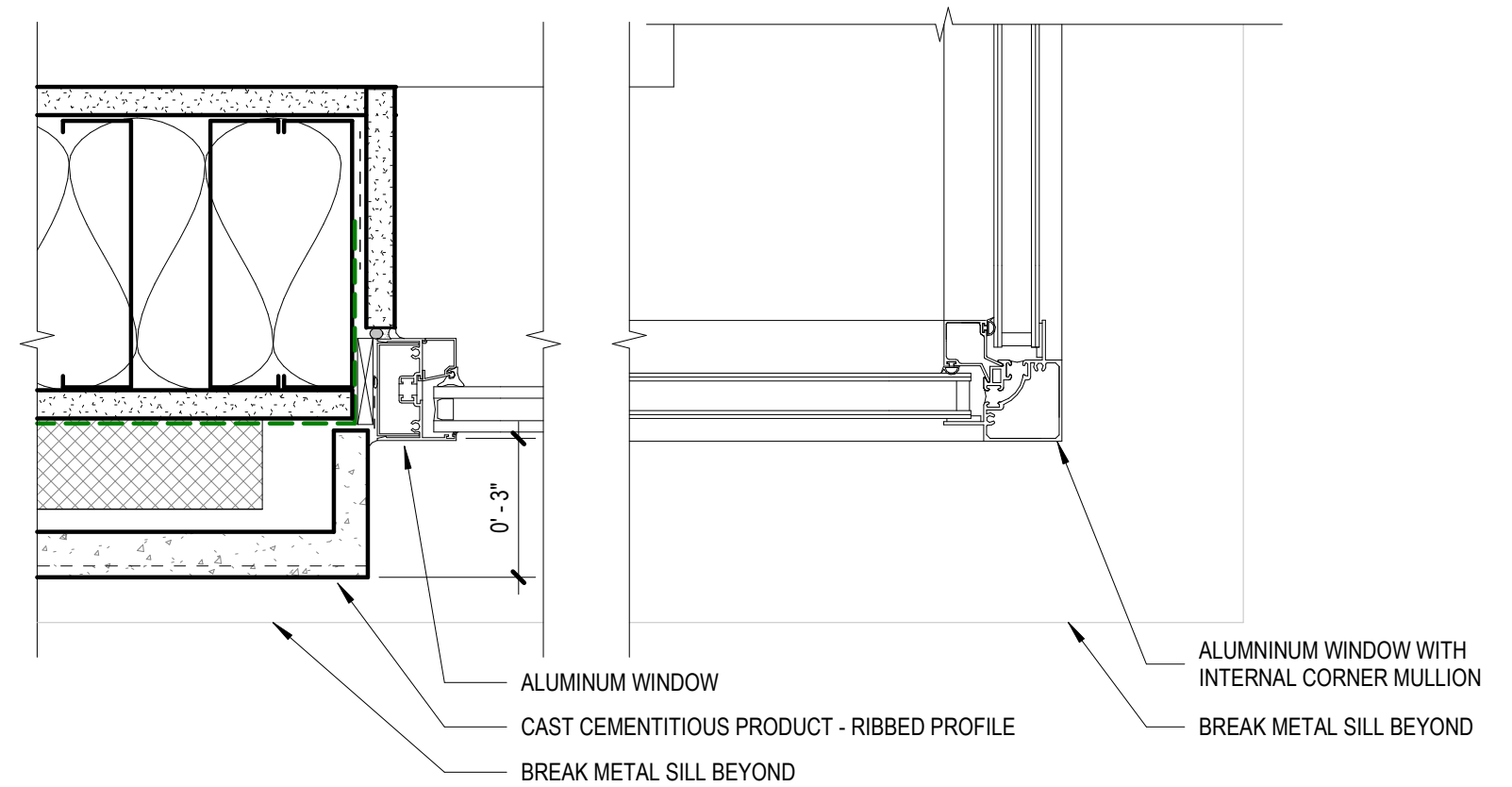
3" = 1'-0"

1

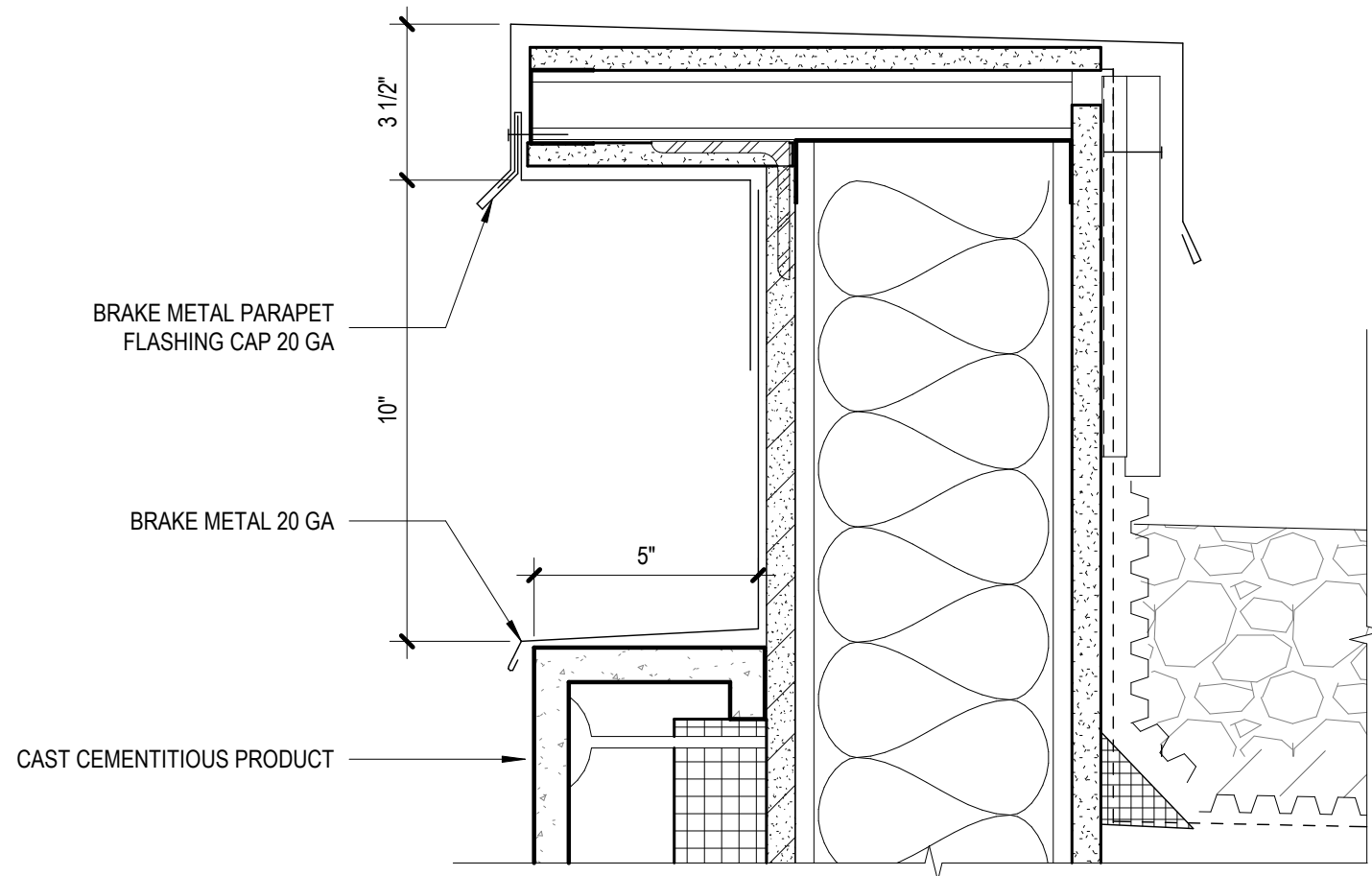




WINDOW JAMB @ INSET 2
3" = 1'-0"



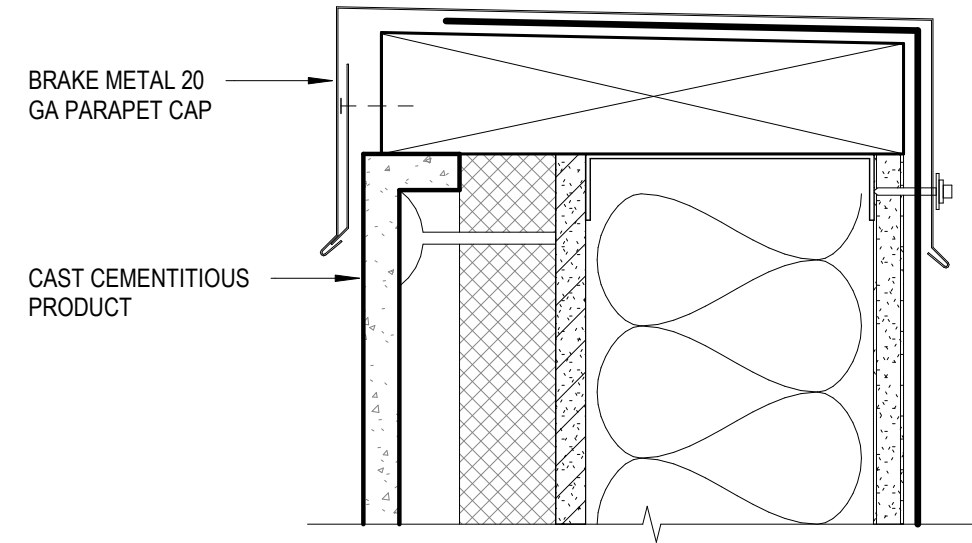
WINDOW JAMB @ CORNER 1
3" = 1'-0"



PARAPET @ CAST CEMENTITIOUS PRODUCT

3" = 1'-0"

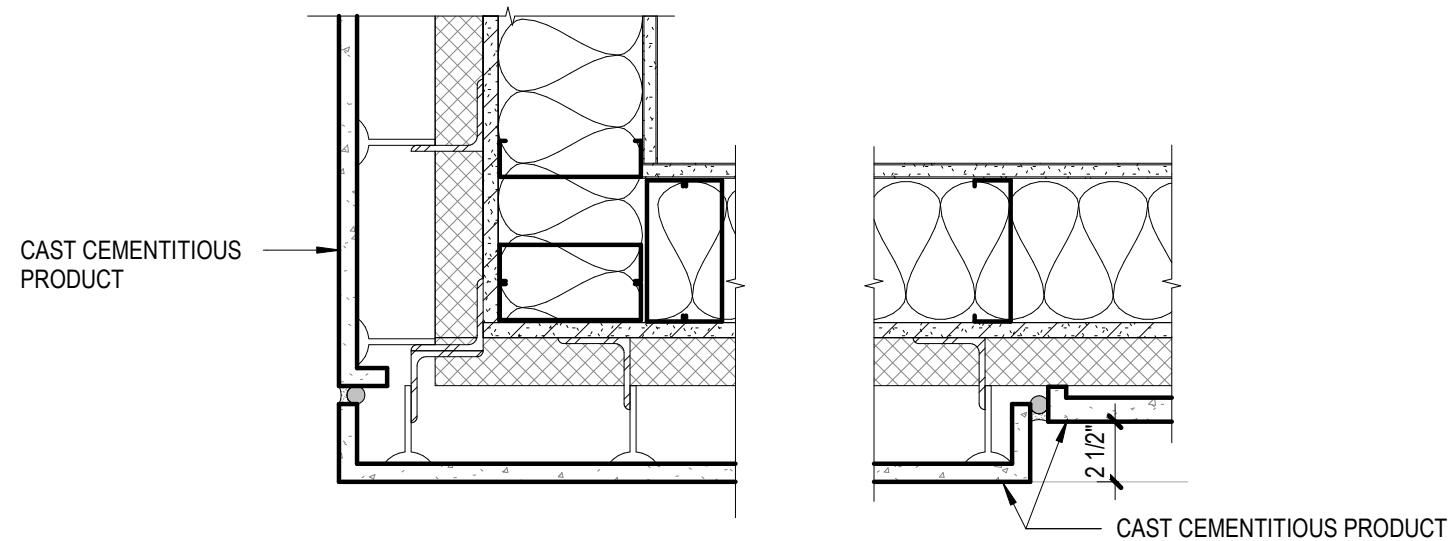
3



PARAPET @ CAST CEMENTITIOUS PRODUCT

3" = 1'-0"

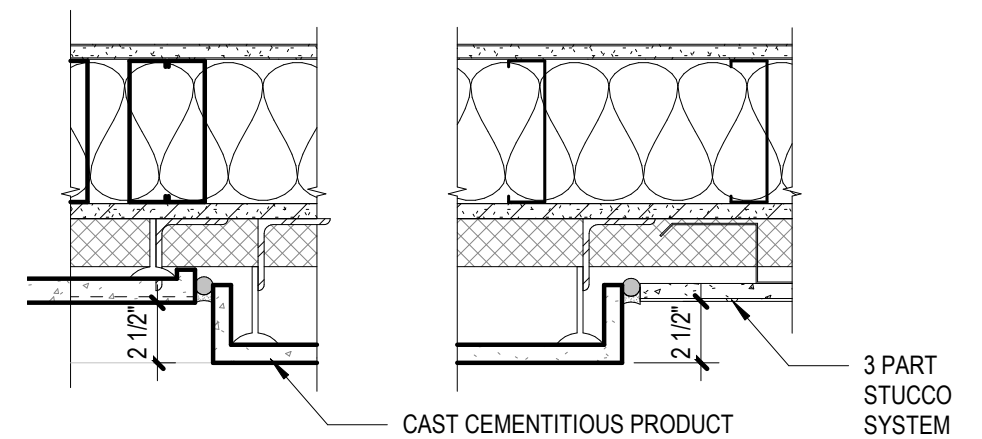
1



CAST CEMENTITIOUS PRODUCT @ CORNER

1 1/2" = 1'-0"

4



CAST CEMENTITIOUS PRODUCT JOINT @ STUCCO

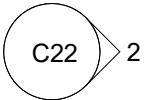
1 1/2" = 1'-0"

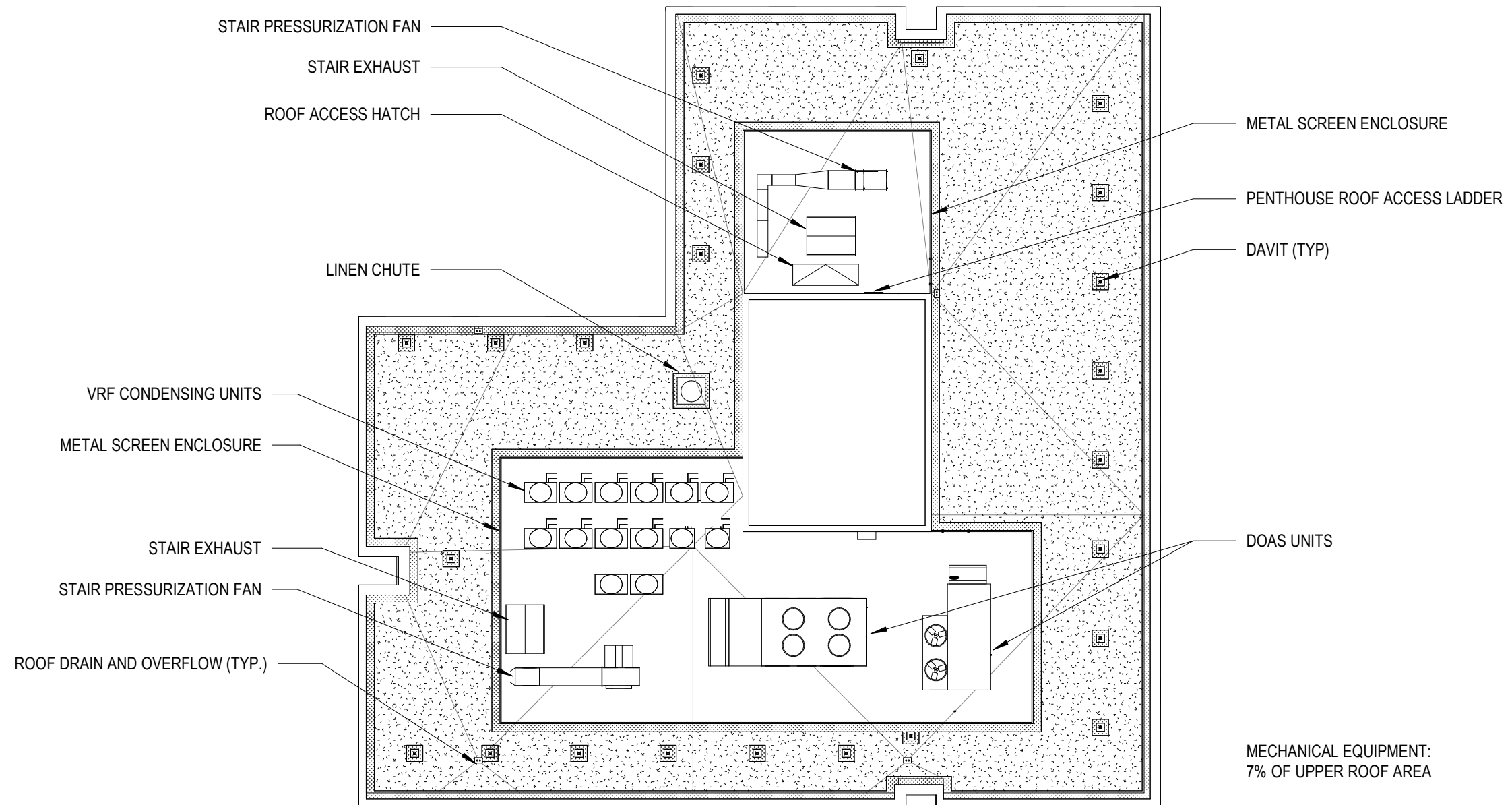
2



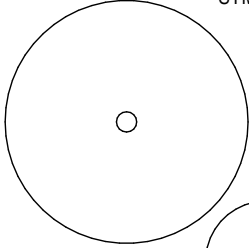
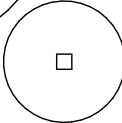












LEGEND - STORMWATER PLANTER

SYMBOL	BOTANICAL NAME	COMMON NAME	SIZE	O.C. SPACING
	ACER CIRCINATUM	VINE MAPLE	25 GAL.	PER PLAN
	VIBURNUM EDULE	SQUASHBERRY	5 GAL.	PER PLAN
	JUNCUS TENUIS	POVERTY RUSH	1 GAL.	12"
	POLYPODIUM GLYCYRRHIZA	LICORICE FERN	1 GAL.	12"
	1" - 1 1/2" WASHED COBBLE			
	3" WASHED COBBLE			

ACER CIRCINATUM



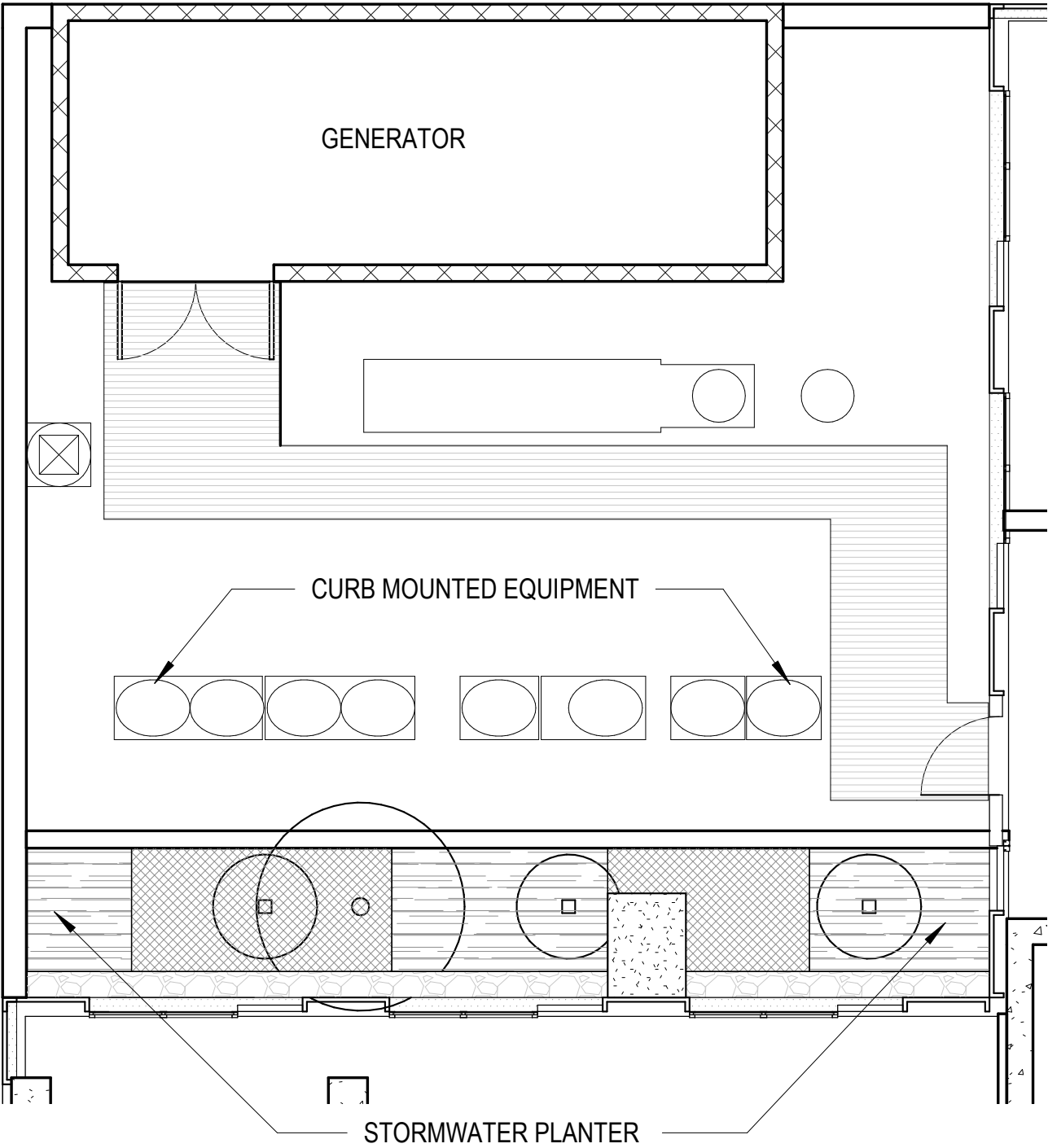
JUNCUS TENUIS



VIBURNUM EDULE

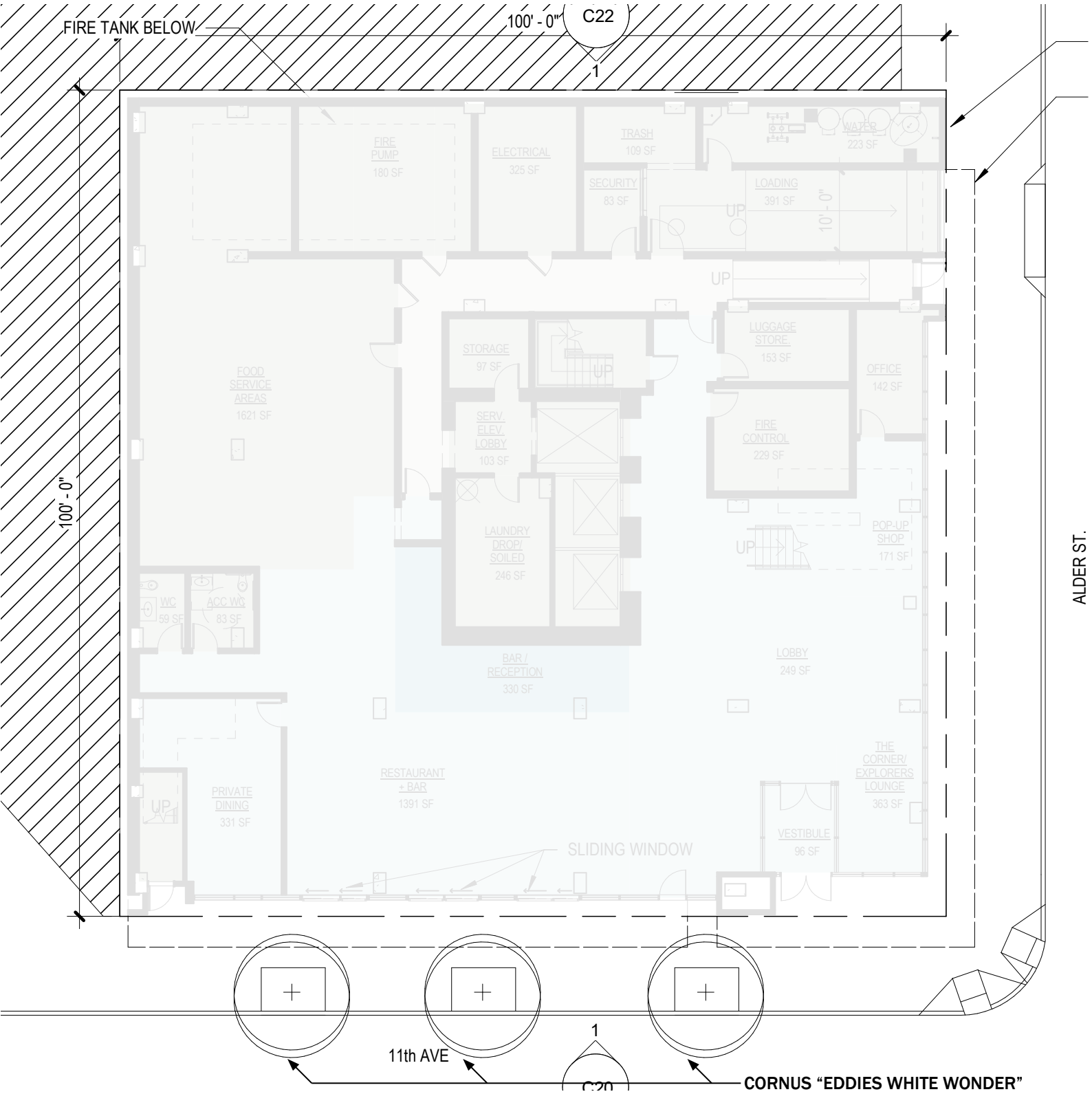


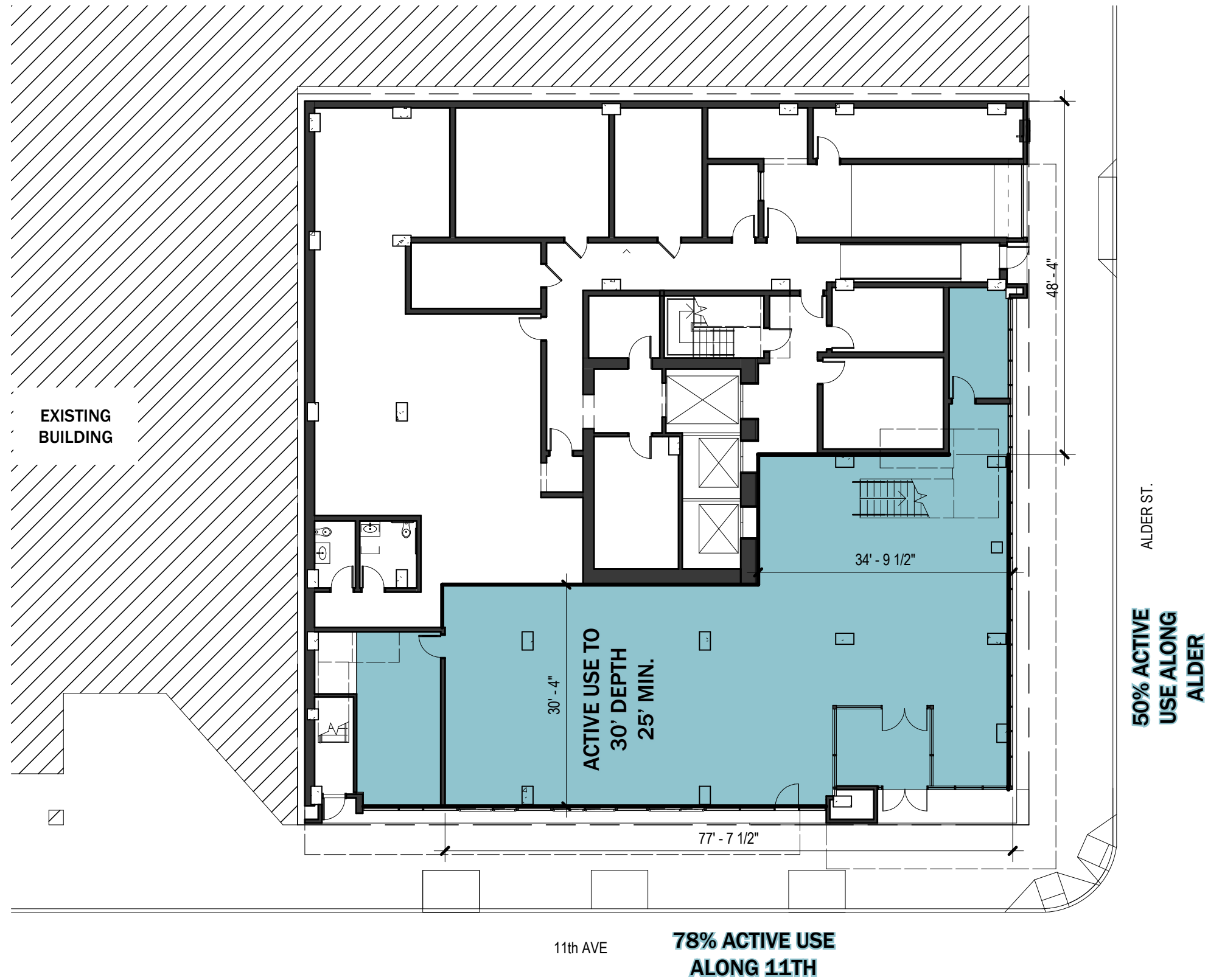
POLYPODIUM GLYCYRRHIZA

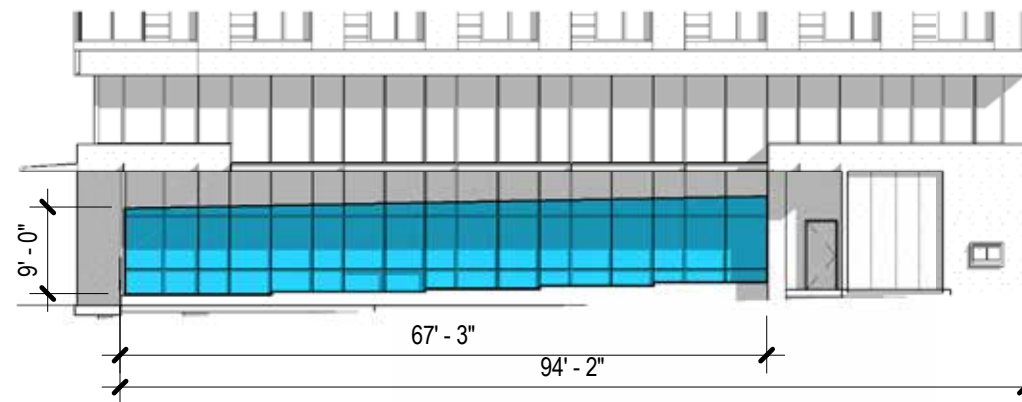


LEVEL 3 PLAN

CORNUS “EDDIES WHITE WONDER”







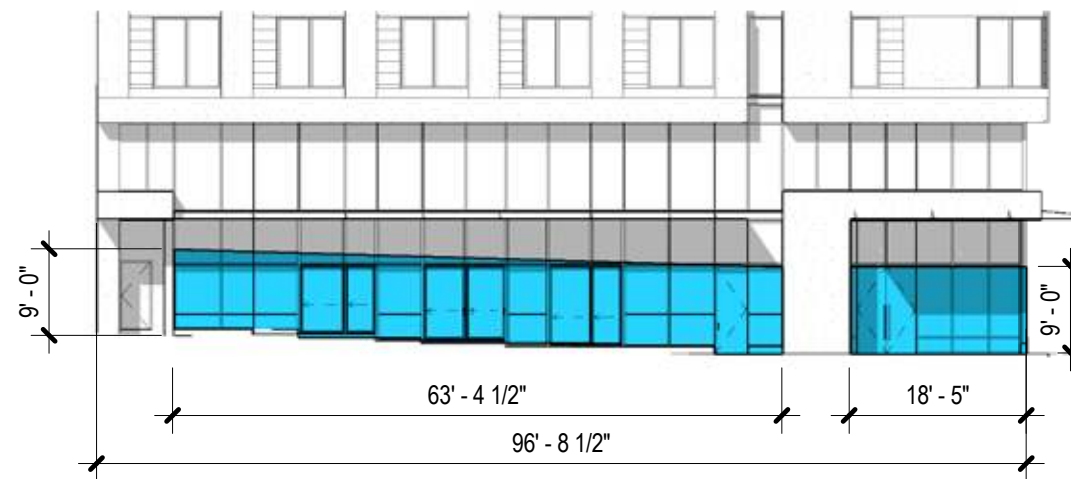
EAST ELEVATION

NORTH ELEVATION

Required amount of Window Area at
Ground Floor > 25%
Proposed amount of Window Area at
Ground Floor: 59%

Required amount of Window Length at
Ground Floor > 50%
Proposed amount of Window Length at
Ground Floor: 71%

Required amount of Window Area
above Ground Floor > 15%
Proposed amount of Window Area
Above Ground Floor: 42%



NORTH ELEVATION

EAST ELEVATION

Required amount of Window Area at
Ground Floor > 25%
Proposed amount of Window Area at
Ground Floor: 80%

Required amount of Window Length at
Ground Floor > 50%
Proposed amount of Window Length at
Ground Floor: 84%

Required amount of Window Area above
Ground Floor > 15%
Proposed amount of Window Area above
Ground Floor: 40%

GROUND FLOOR WINDOWS

