

CENTRALCITY 2035

Decision Packet M: Willamette River - Miscellaneous

PSC Work Session 3 – 01/10/2017

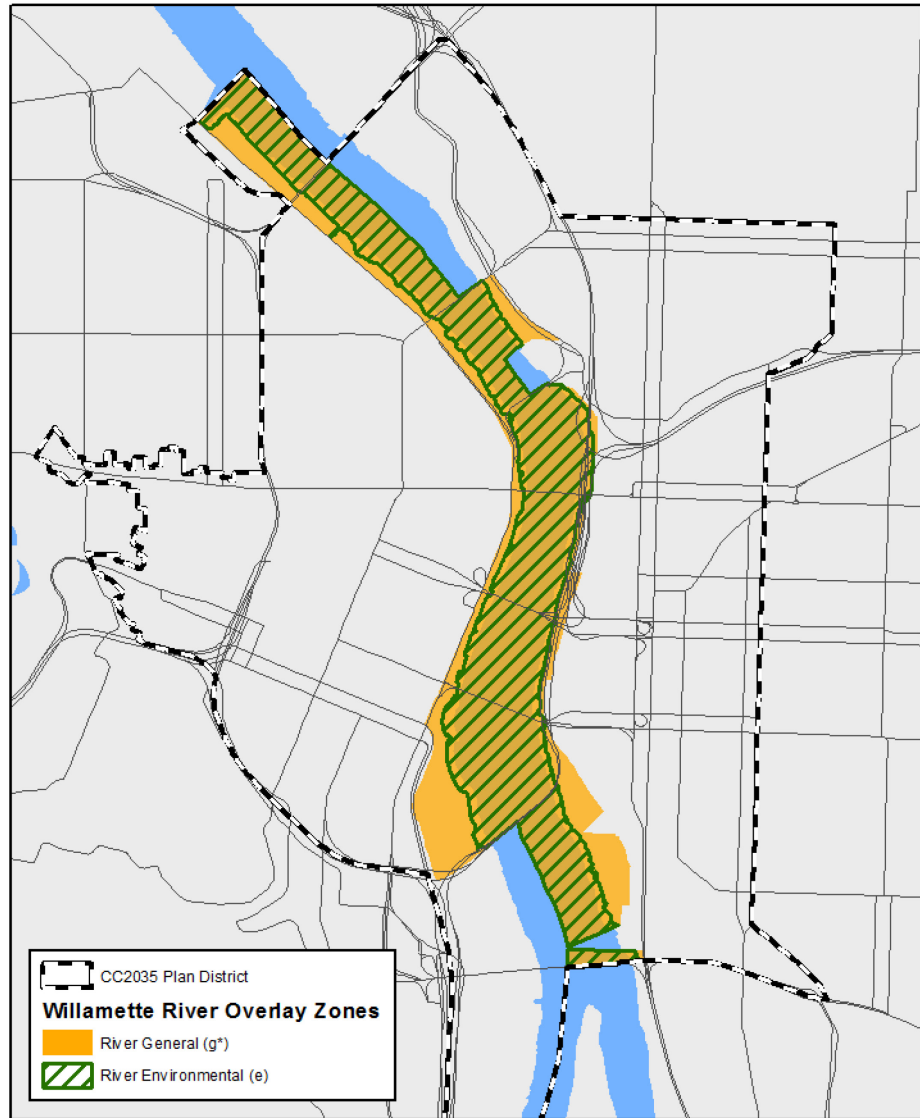


Bureau of Planning and Sustainability
Innovation. Collaboration. Practical Solutions.

City of Portland, Oregon
Charlie Hales, Mayor - Susan Anderson, Director



River Overlay Zones



River Overlay Zones

1. Previous amendments are grey
2. New amendments are yellow

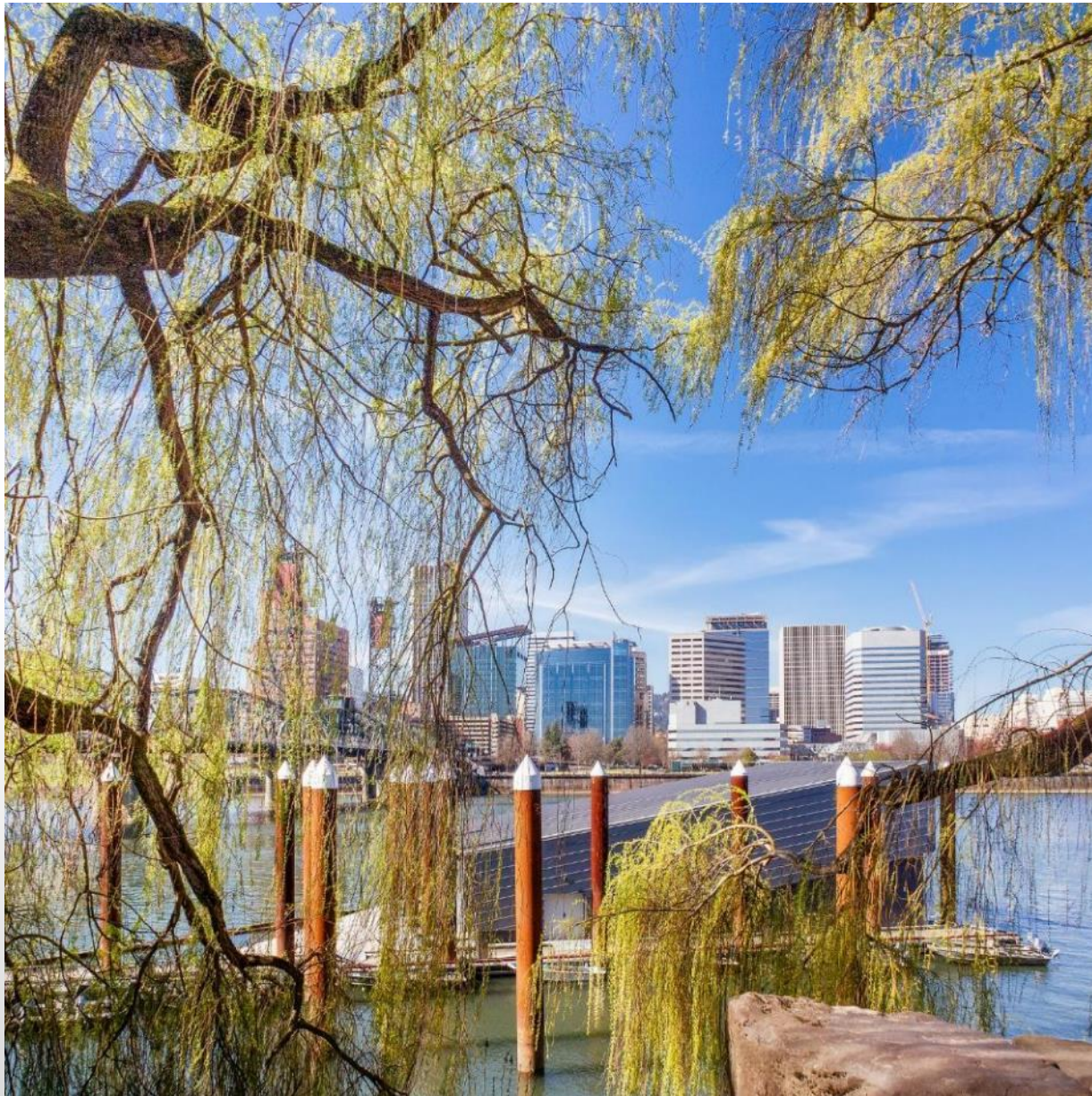


River Overlay Zones

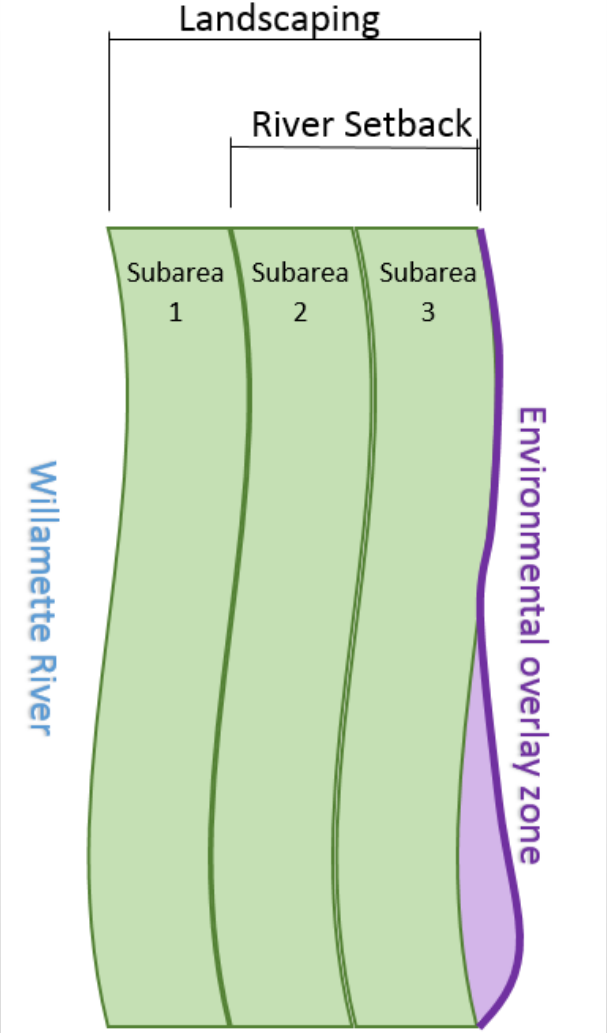
Summary of New Amendments

1. Exemptions for maintenance/repair of existing structures
2. Exemption for soil amendments
3. Clarifications for landscaping
4. Clarifications for river-related uses

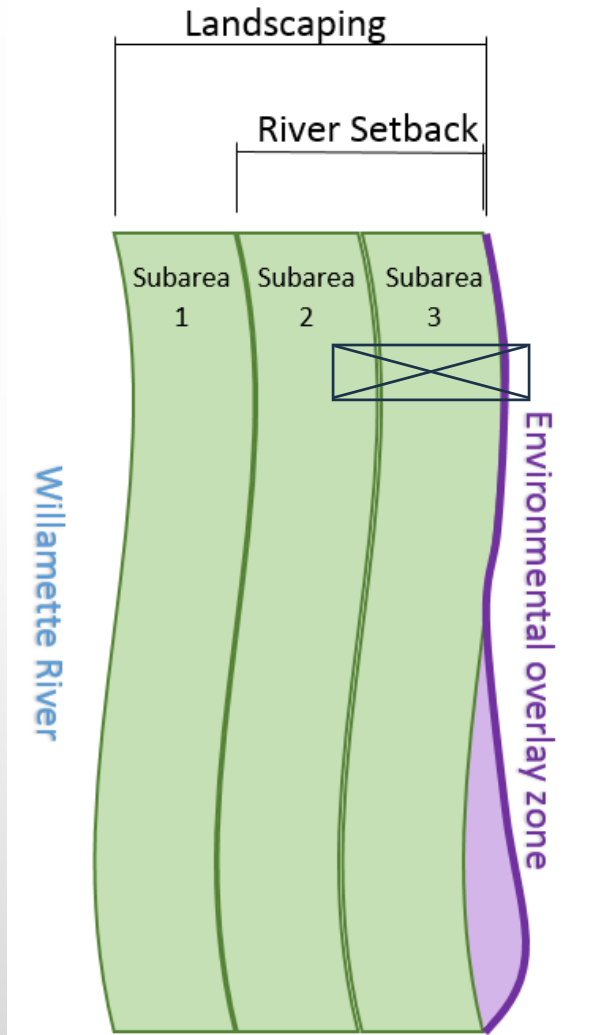




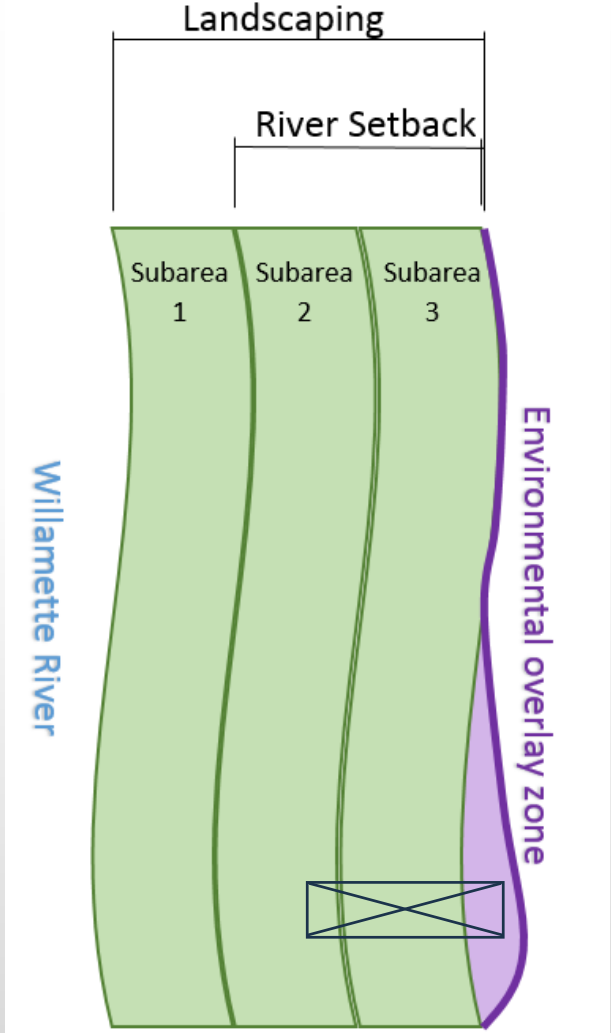
Landscaping



Landscaping



Landscaping



M9 (and previous H6)

Proposed Draft Regulation in 33.475.215

- Limits river-related development associated with Marine Passenger Docks and Marine Terminals to 5,000 square feet within the river setback.

