

# CENTRALCITY 2035

## Packet K: FAR Requests

PSC Work Session 3 – 1/10/2017



**Bureau of Planning and Sustainability**  
Innovation. Collaboration. Practical Solutions.

*City of Portland, Oregon*  
Charlie Hales, Mayor • Susan Anderson, Director



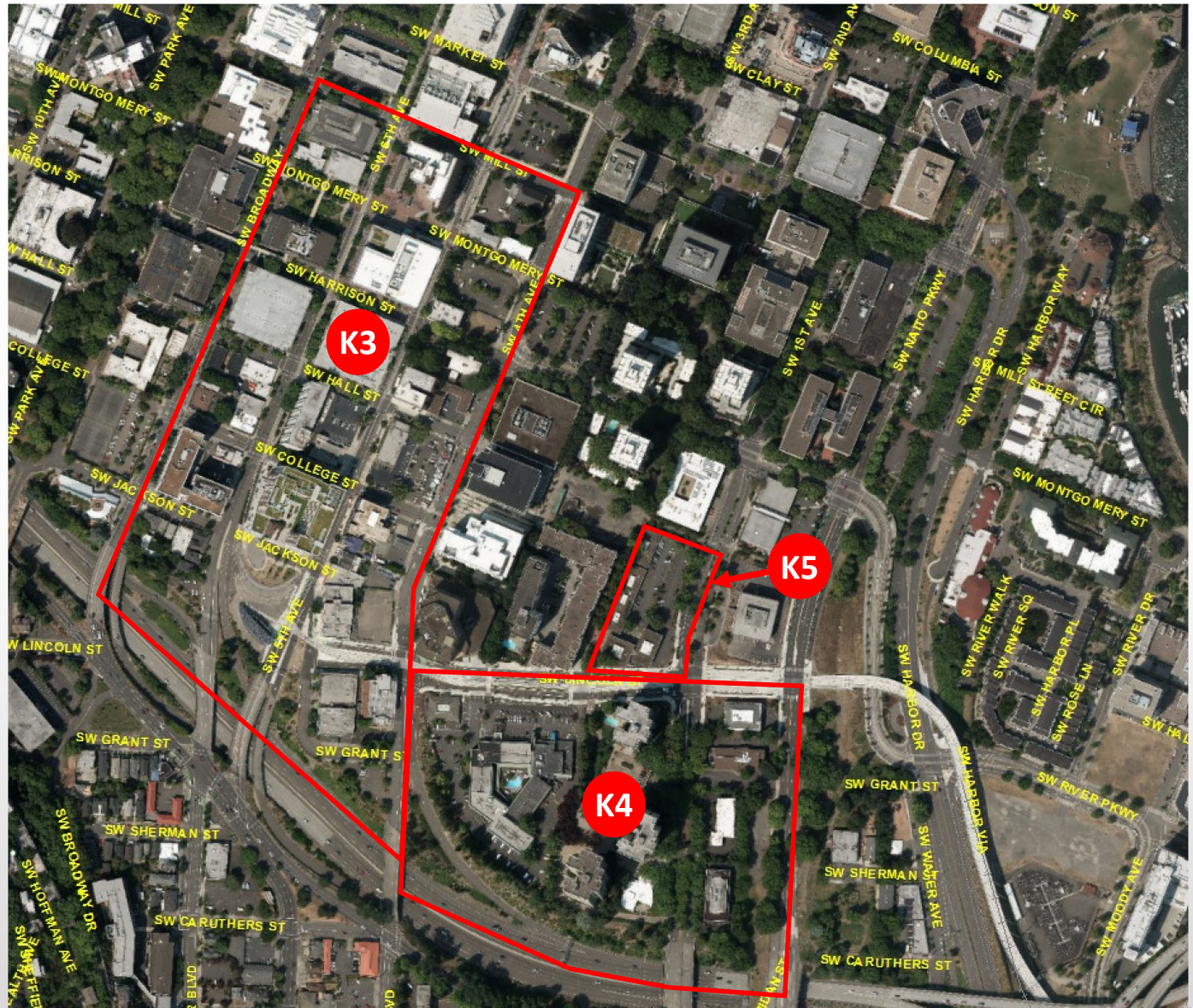
# K3-K5: University District/South Downtown

## Discussion Items

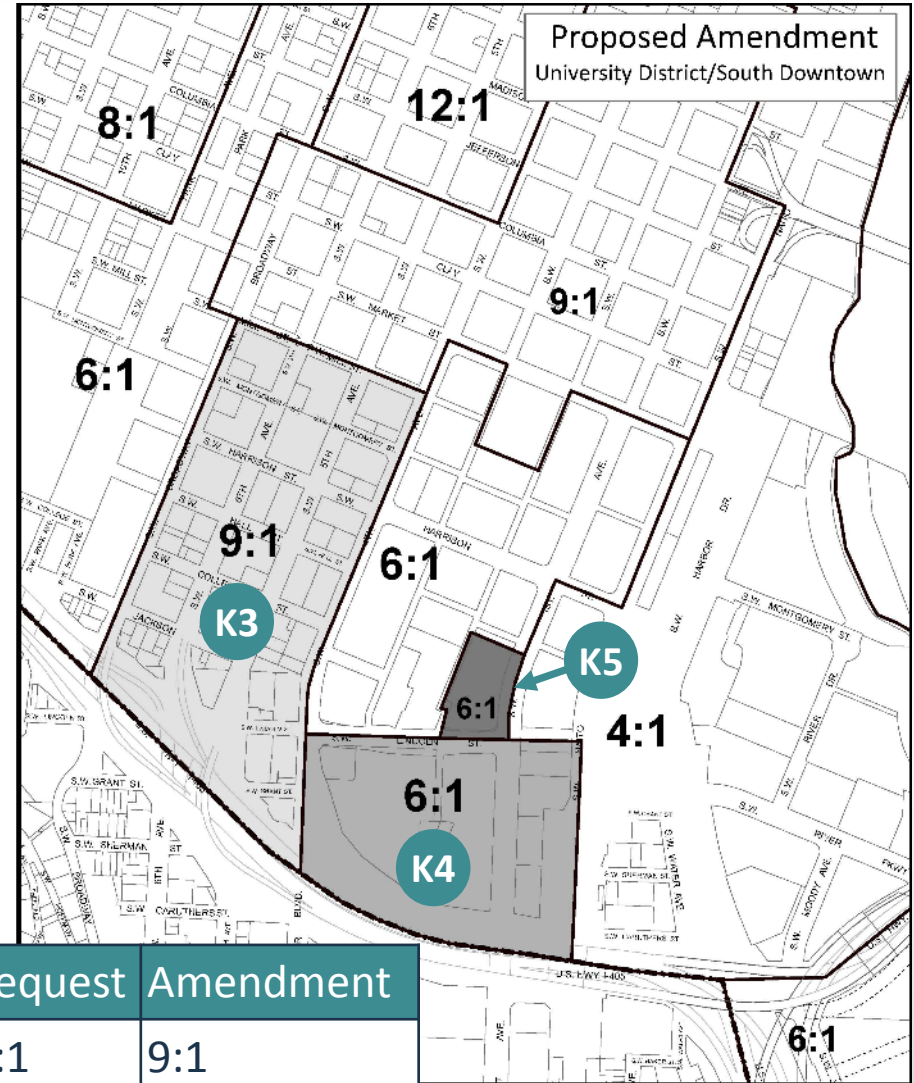
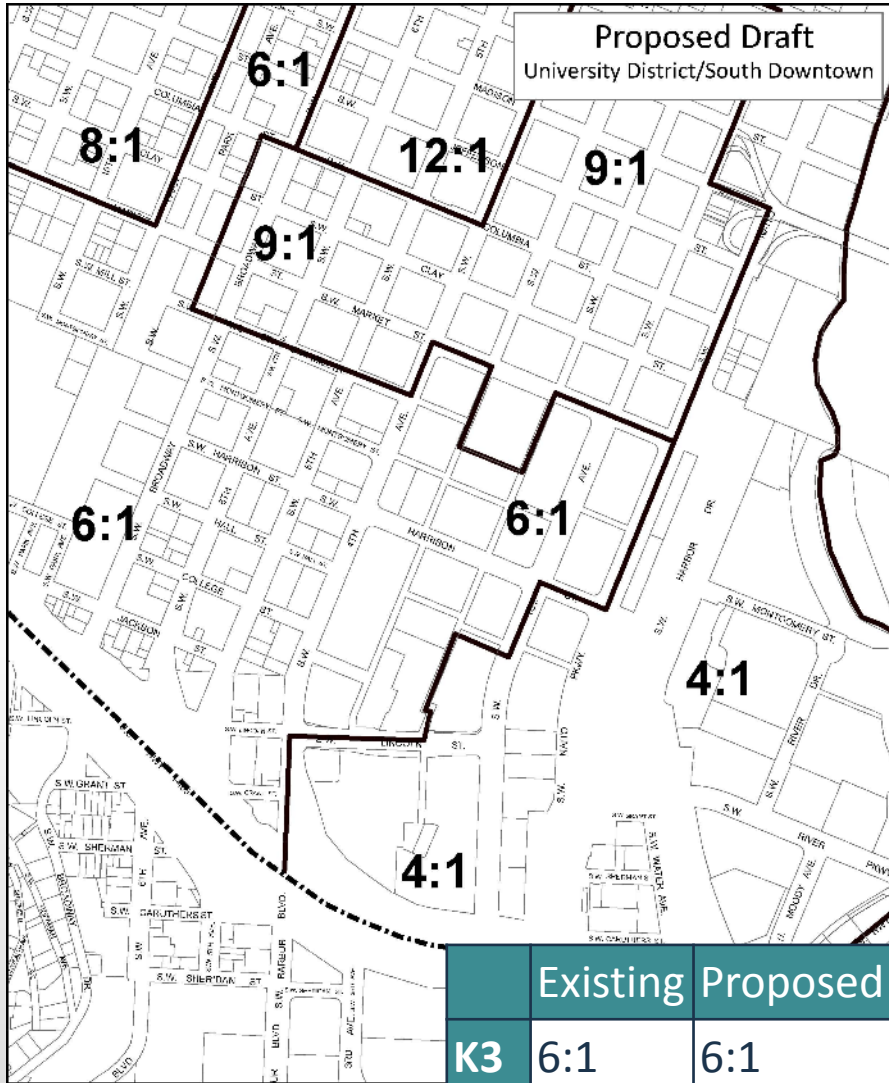
**K3:** South Transit Mall

**K4:** Lincoln Station Area

**K5:** SW 1<sup>st</sup> and Lincoln



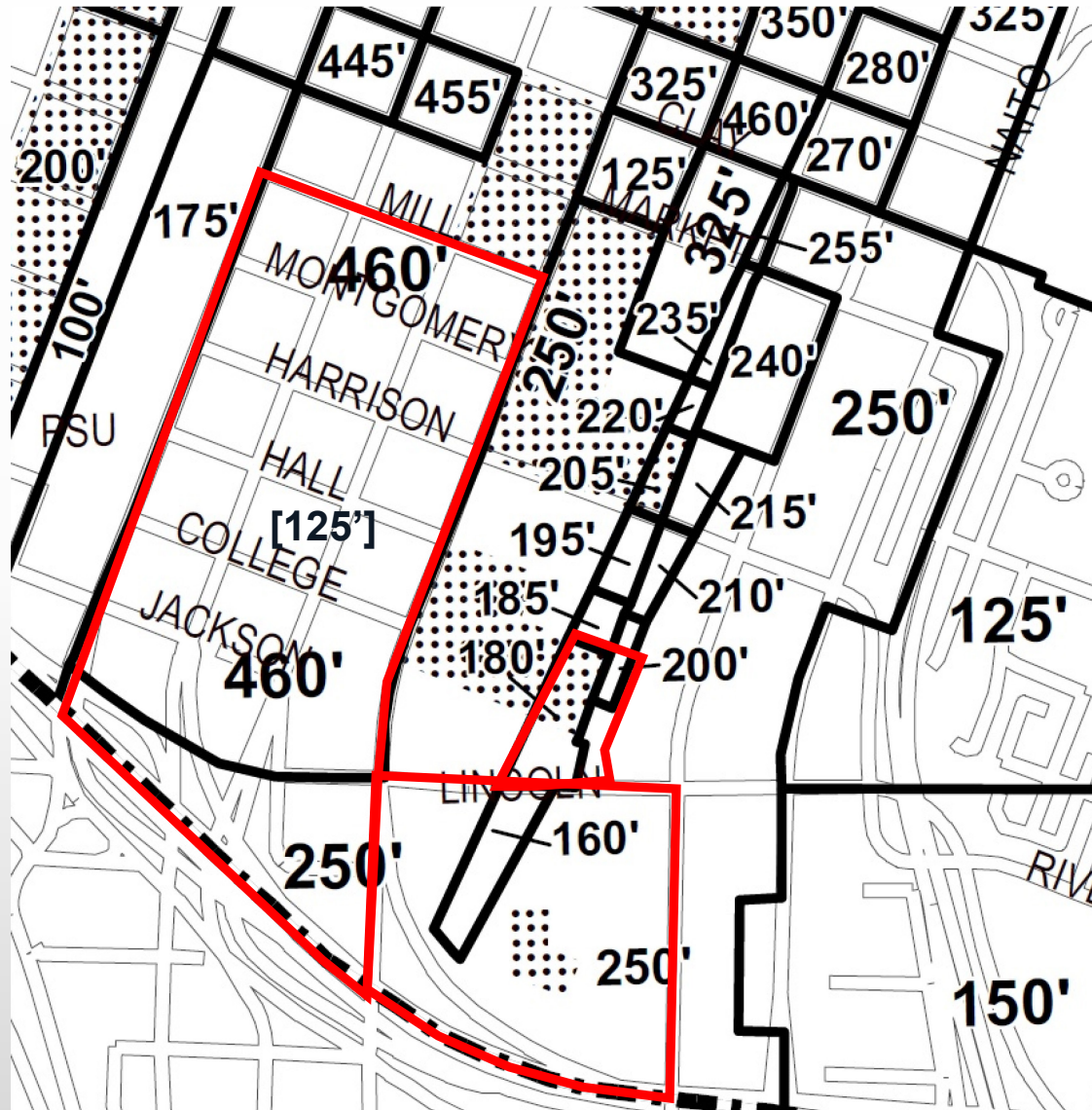
# K3-K5: University District/South Downtown



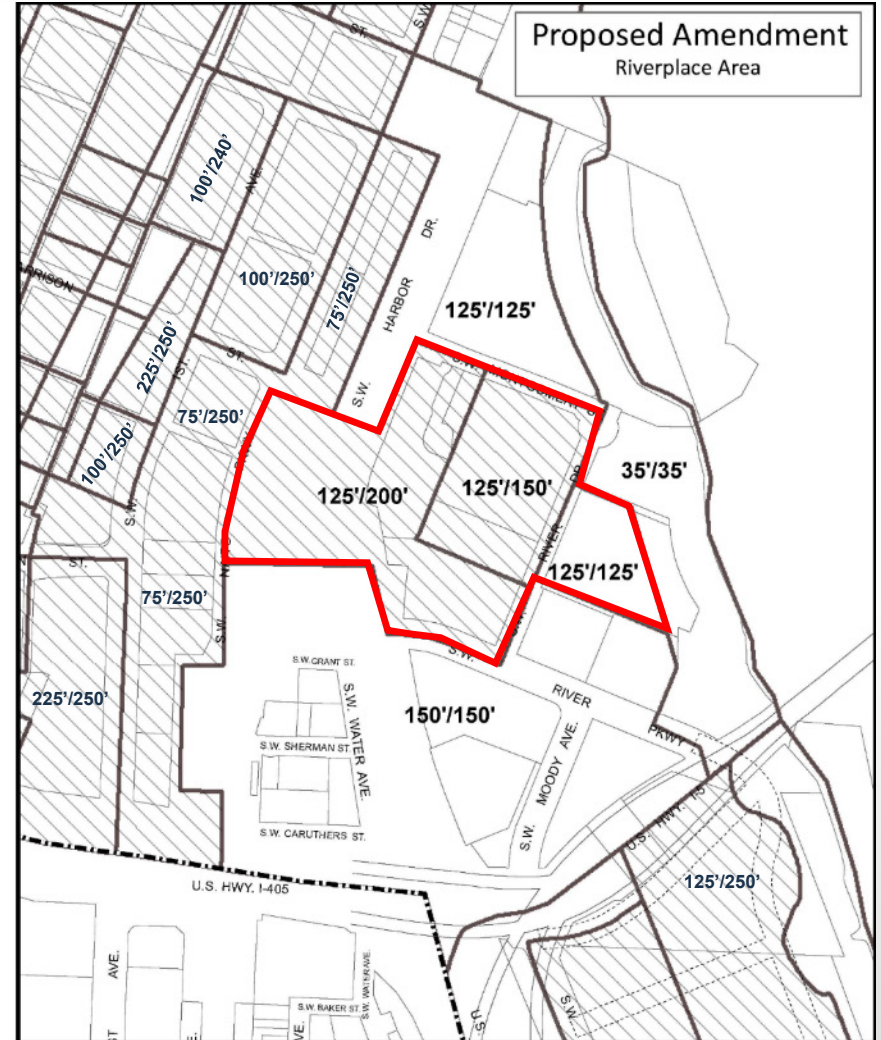
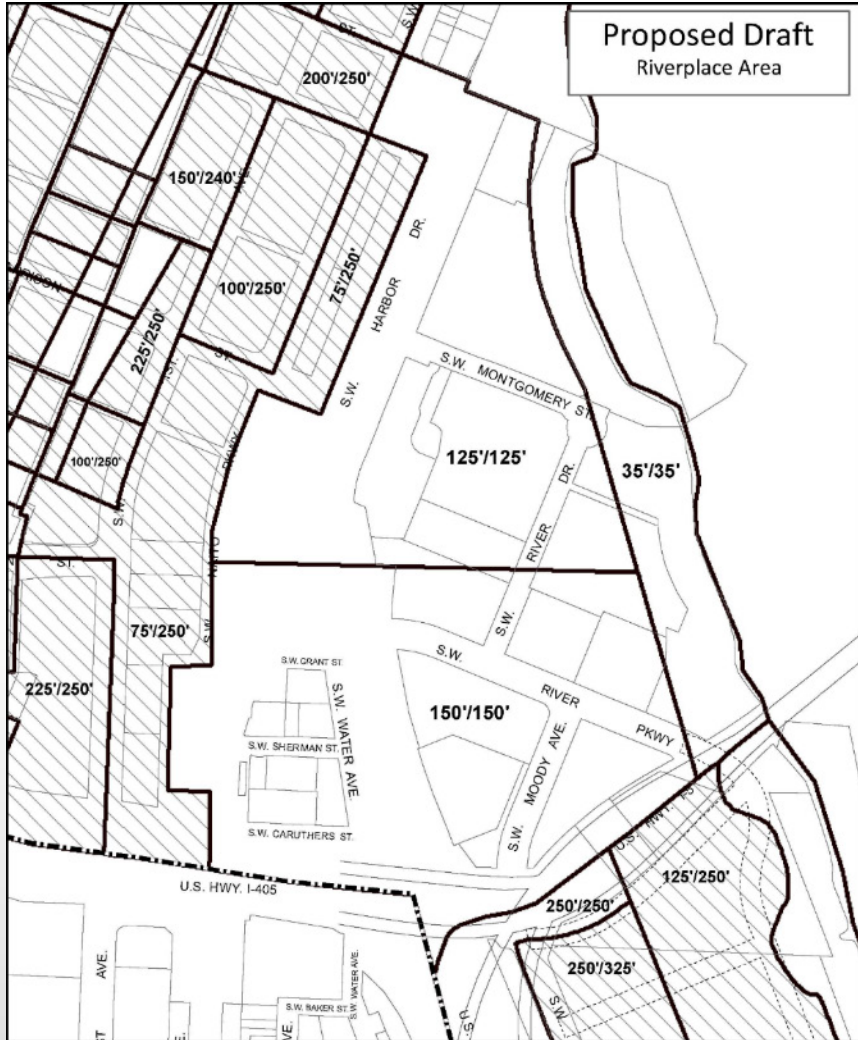
	Existing	Proposed	Request	Amendment
K3	6:1	6:1	9:1	9:1
K4	2:1	4:1	6:1	6:1
K5	2:1	4:1	6:1	6:1



# K3-K5: University District/South Downtown—Maximum Heights

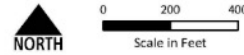


# C3: University District/South Downtown



September 14, 2016

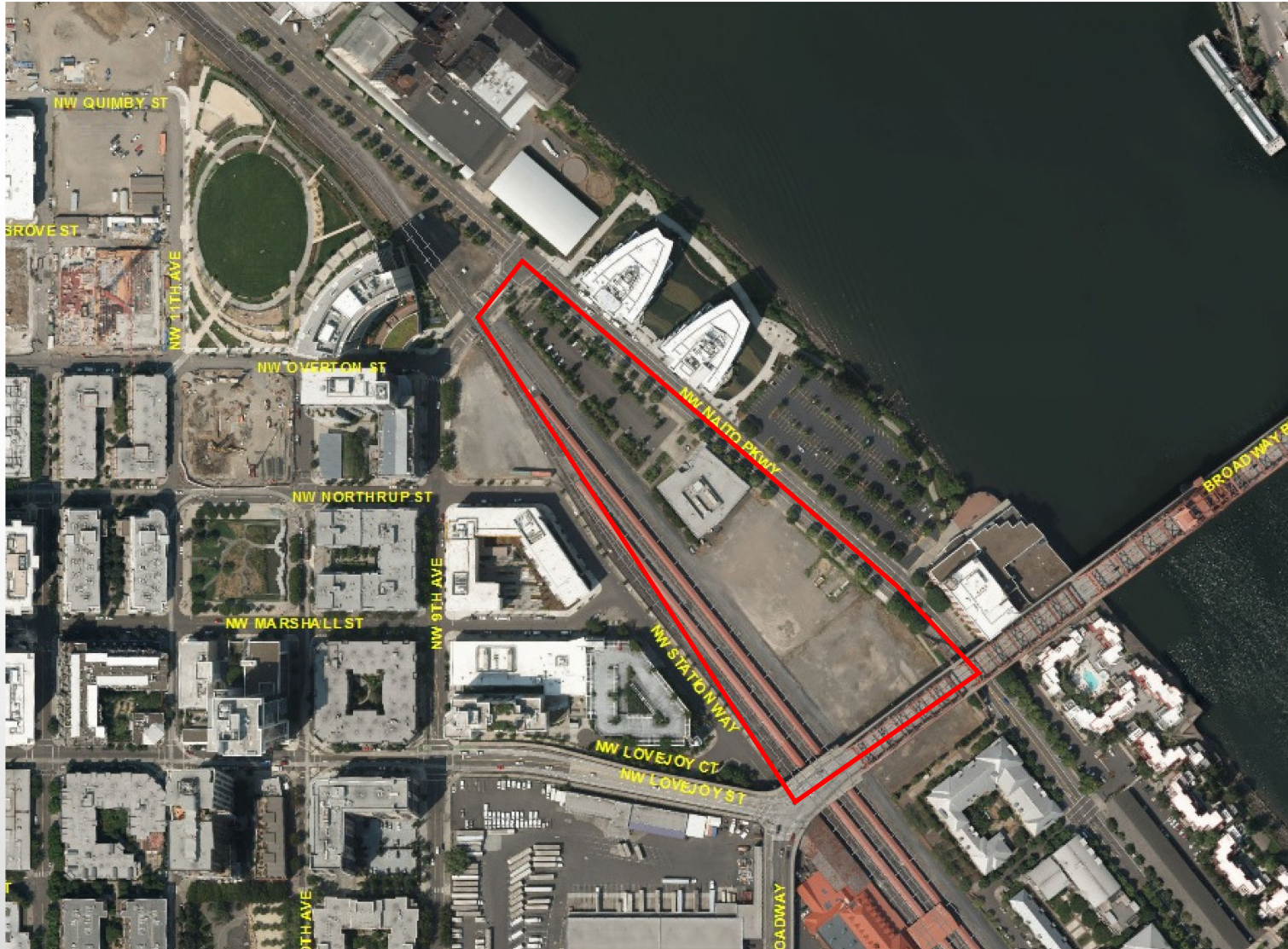
- Central City Plan District boundary
- Base/Maximum Heights Boundary
- Area eligible for height increase
- Areas where height is determined by base zone



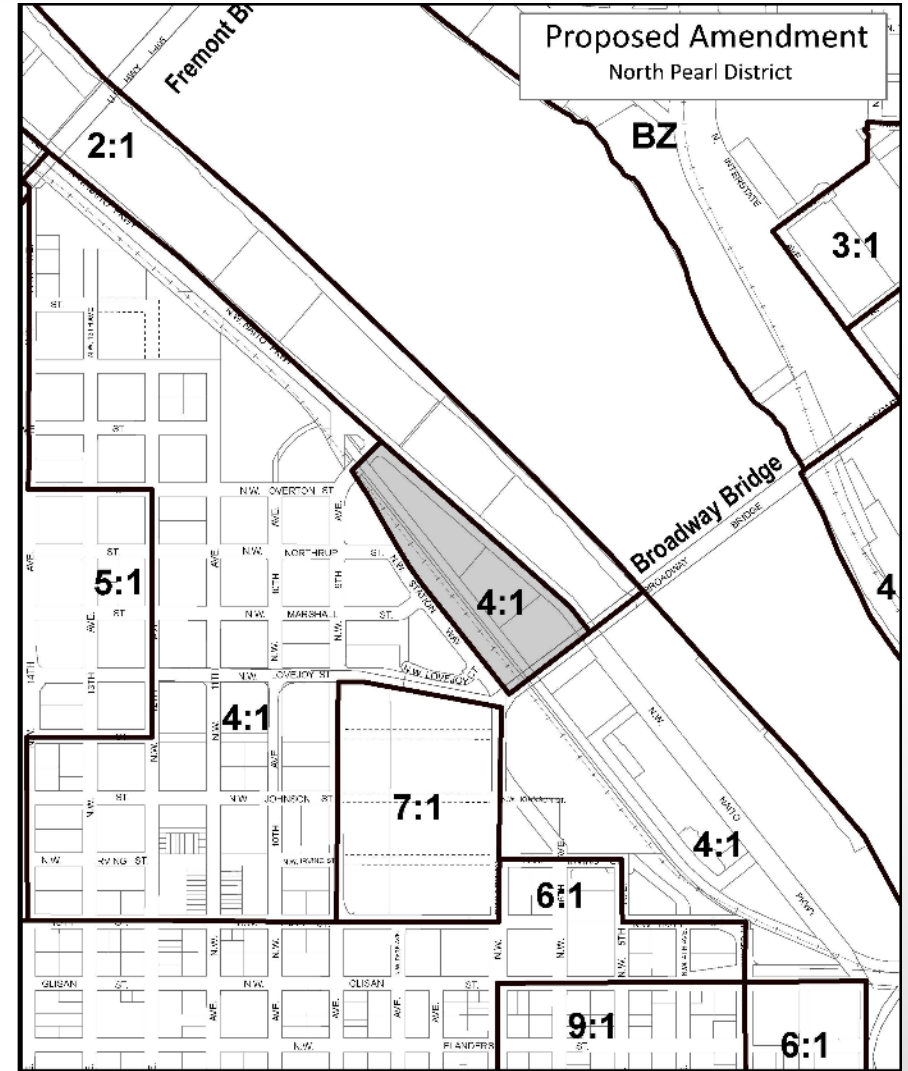
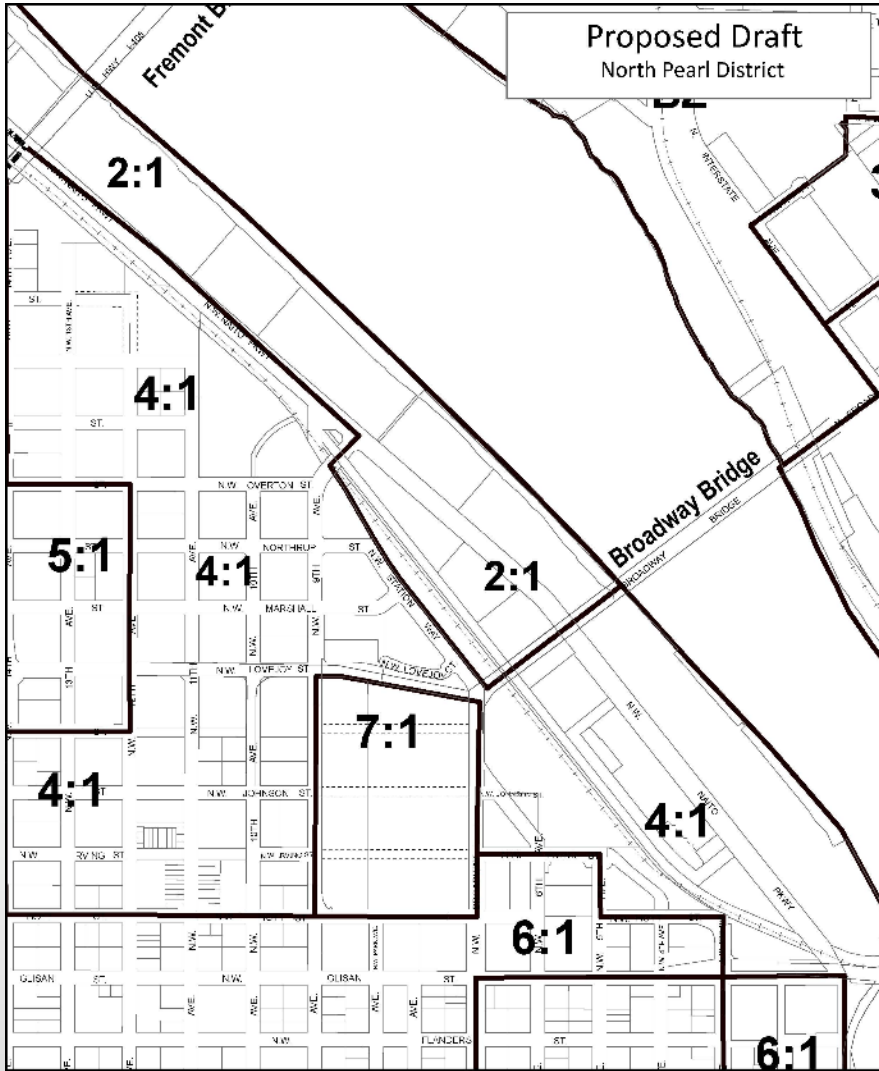
**Bureau of Planning and Sustainability**  
Innovation. Collaboration. Practical Solutions.



# K6: Pearl District

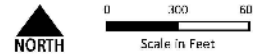


# K6: Pearl District



November 28, 2016

- Central City Plan District Boundary
- FAR area boundary
- Focus Area(s)



**Bureau of Planning and Sustainability**  
Innovation. Collaboration. Practical Solutions.

City of Portland, Oregon  
Cheryl McKelvey • Assistant Director

