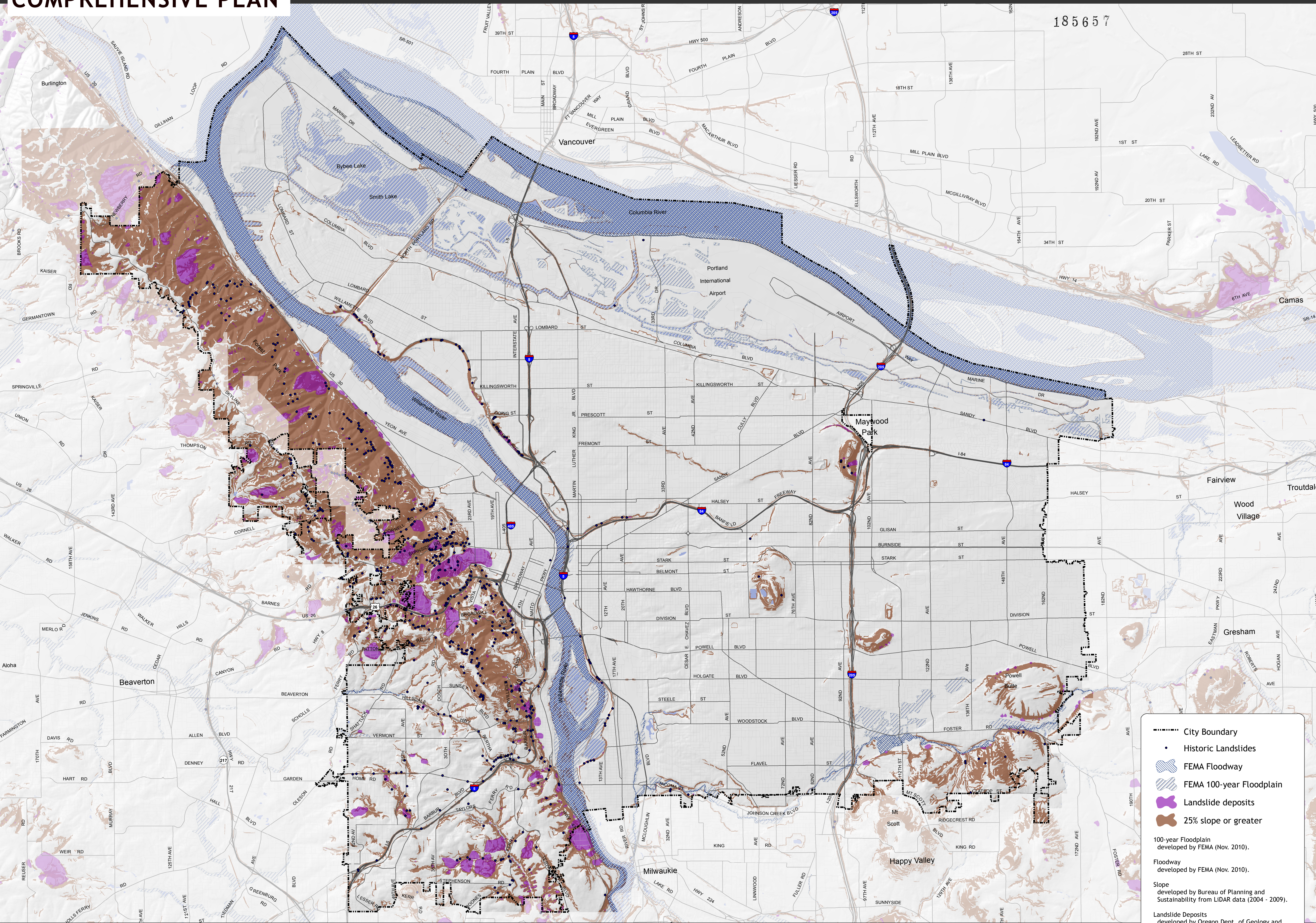


# Flood, Slope, and Slide Hazards- HAZ-01-REV-1

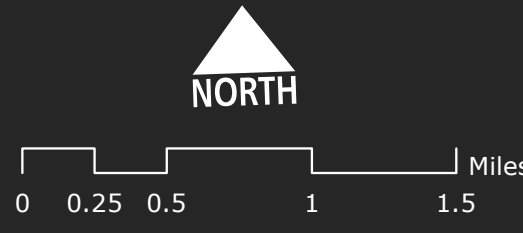
## BUILDABLE LANDS

### COMPREHENSIVE PLAN



- - - - - City Boundary  
 • Historic Landslides  
 FEMA Floodway  
 FEMA 100-year Floodplain  
 Landslide deposits  
 25% slope or greater

100-year Floodplain developed by FEMA (Nov. 2010).  
 Floodway developed by FEMA (Nov. 2010).  
 Slope developed by Bureau of Planning and Sustainability from LiDAR data (2004 - 2009).  
 Landslide Deposits developed by Oregon Dept. of Geology and Mineral Industries (Dec. 2014).  
 Historic Landslides developed by Oregon Dept. of Geology and Mineral Industries (Dec. 2014).



**Bureau of Planning and Sustainability**  
 Innovation. Collaboration. Practical Solutions.  
 City of Portland, Oregon  
 Charlie Hales, Mayor • Susan Anderson, Director



May 31, 2016 City of Portland | Bureau of Planning and Sustainability | Geographic Information System  
 The information on the map was derived from digital data-bases on the City of Portland, Bureau of Planning and Sustainability GIS. Care was taken in the creation of this map but it is provided "as is". The City of Portland cannot accept any responsibility for error, omissions, or positional accuracy, and therefore, there are no warranties which accompany this product. However, notification of any errors will be appreciated.  
 This work was supported in part by a periodic review grant from the Oregon Department of Land Conservation and Development.