

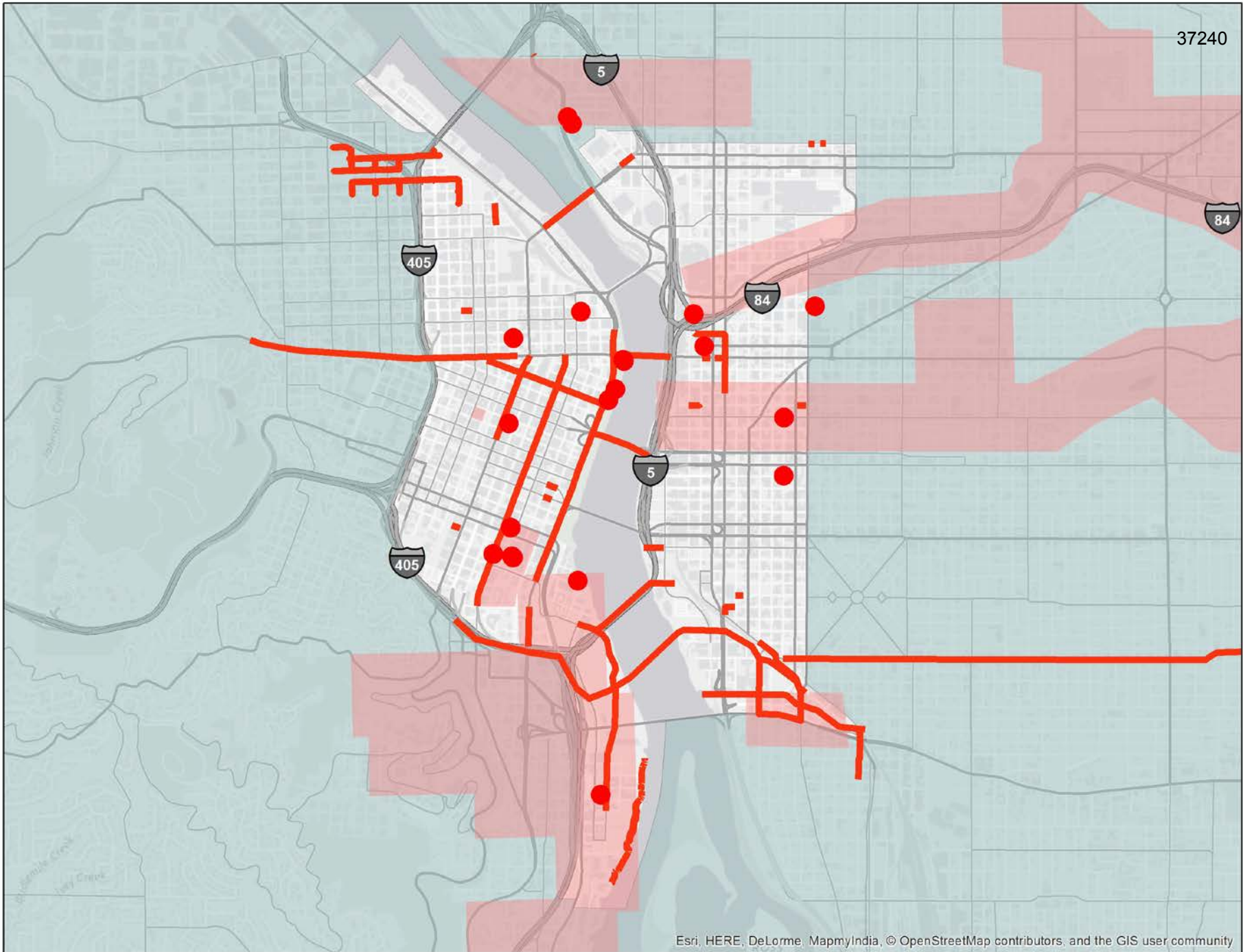
# Keep Portland Moving 2017

*Coordinating work in the ROW*

WE KEEP PORTLAND MOVING.

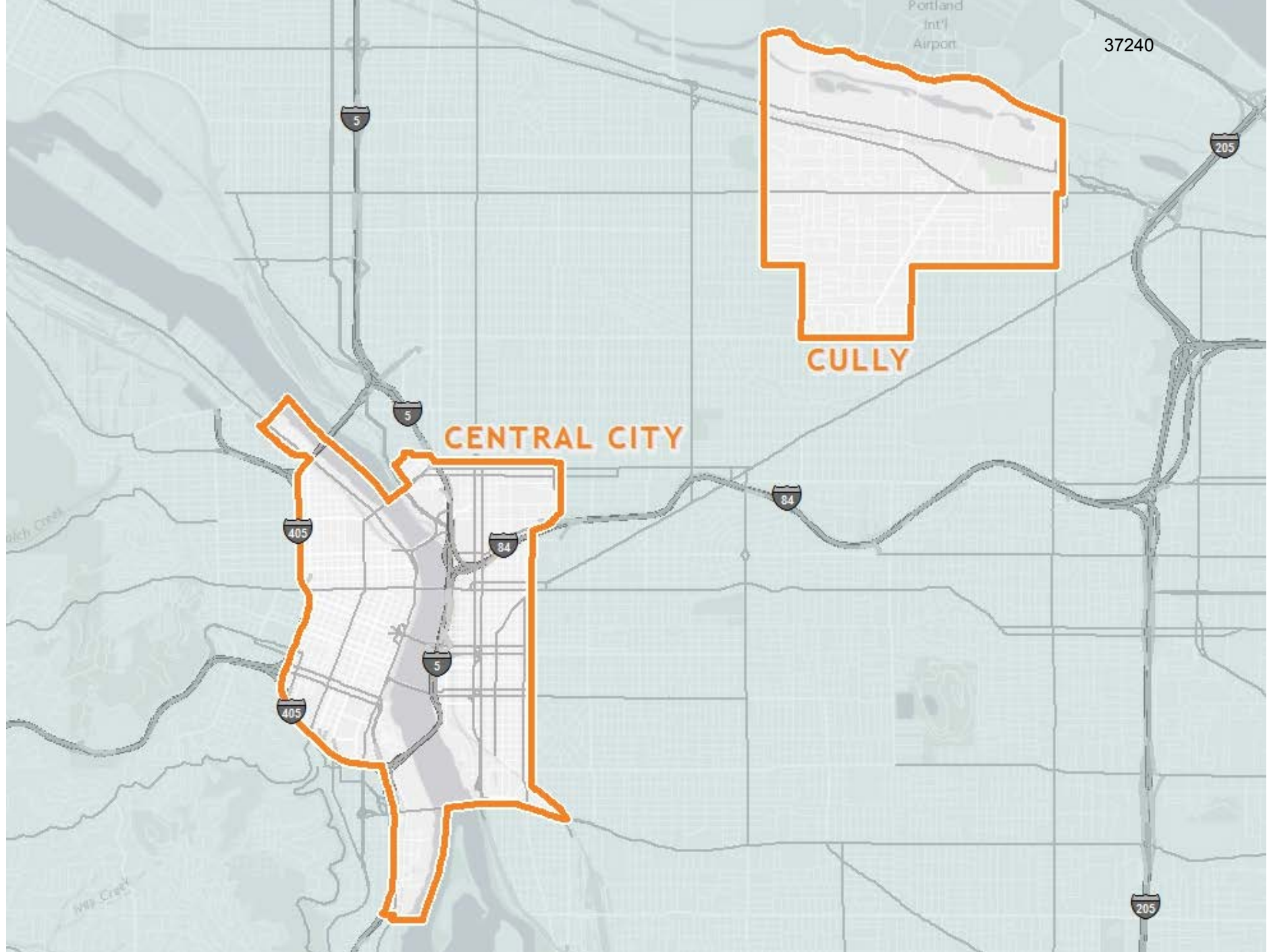


**PBOT**  
PORTLAND BUREAU OF TRANSPORTATION



# Keep Portland Moving 2017

- Advanced notification of work within the ROW of at least 5 business days
- Notification within 24 hours for emergency work within the ROW
- Capital and Maintenance liaisons from each Bureau



Portland  
Int'l  
Airport

37240

205

5

5

405

84

84

CENTRAL CITY

CULLY

405

5

205

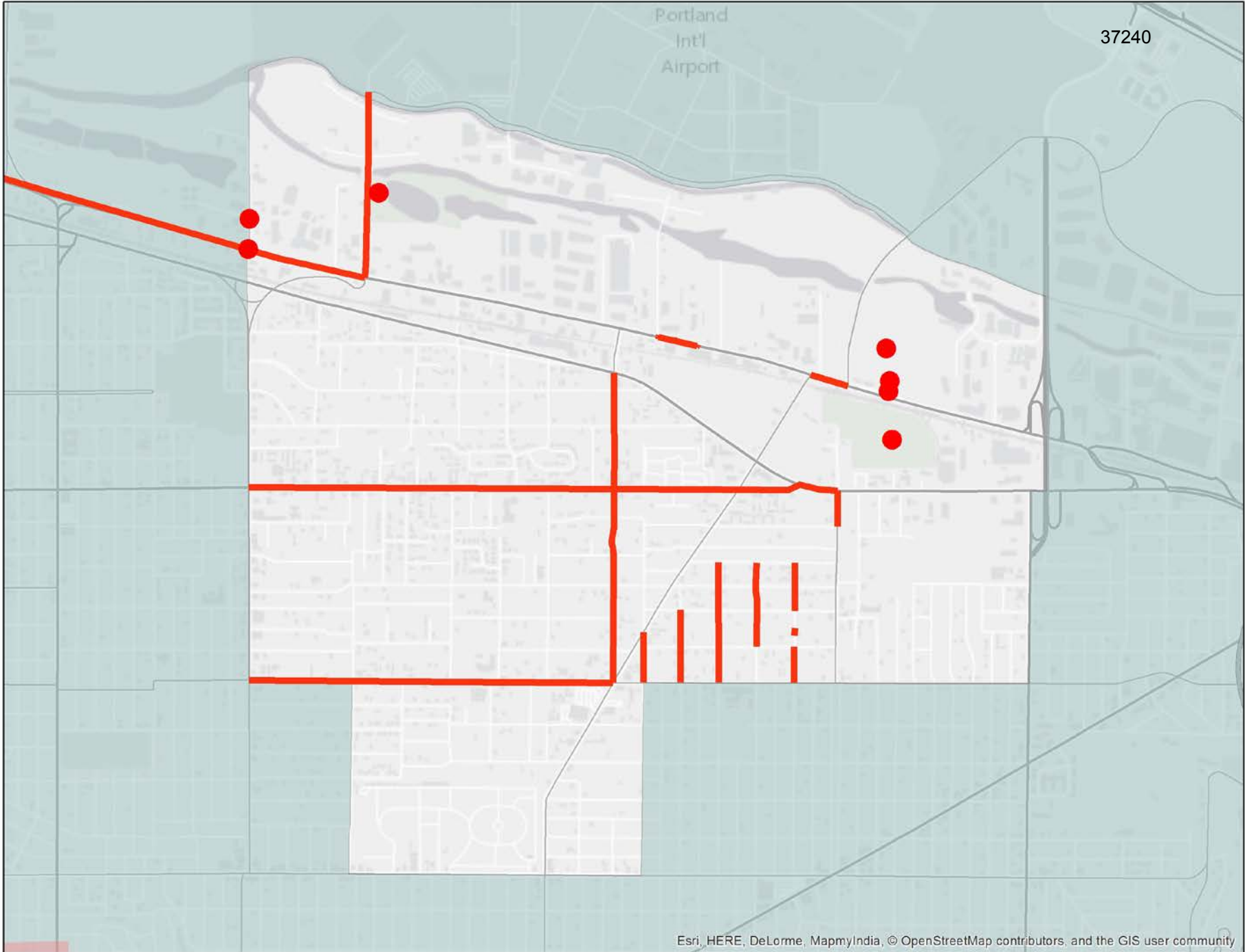
Rich Creek

NW Creek



Portland  
Int'l  
Airport

37240



Portland  
Intl  
Airport

37240

**Connected Cully**  
**Cully Neighborhood Streets**  
**SmartTrips Grant**

# KPM Working Group



## City of Portland

Liaisons from Capital and Maintenance  
Groups from each Infrastructure Bureau

## Other Agencies

TriMet

ODOT

Multnomah County

Streetcar

Franchise Utilities

# KPM Stakeholder Group

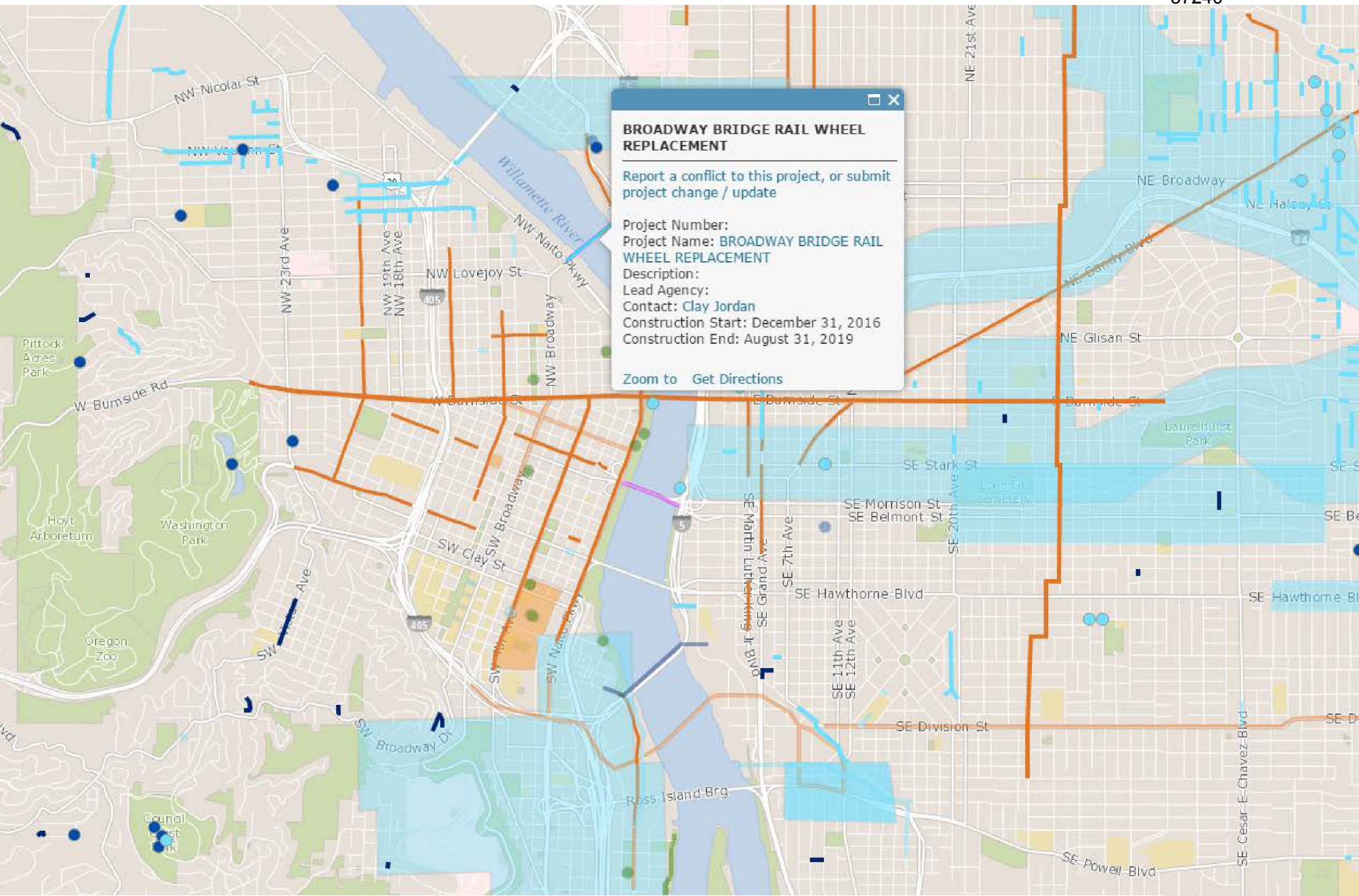


**Portland Development Commission**  
**Portland Business Alliance**  
**East Portland Chamber of Commerce**  
**Cully Association of Neighbors**  
**Portland Disability Commission**  
**Pedestrian Advisory Committee**  
**Bicycle Transportation Alliance**



# Evaluation Metrics

- Traffic volume by mode
- Number of incidents
- Average project delays
- Number of conflicts on-site
- Community complaints



**BROADWAY BRIDGE RAIL WHEEL REPLACEMENT**

---

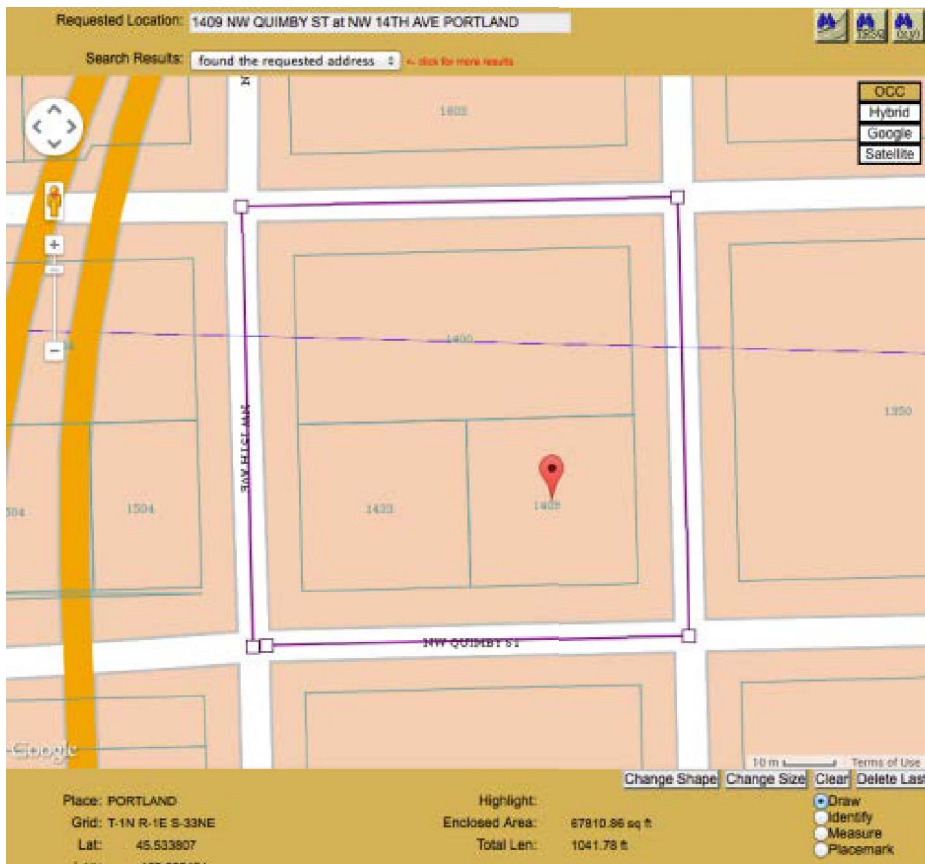
Report a conflict to this project, or submit project change / update

Project Number:  
Project Name: **BROADWAY BRIDGE RAIL WHEEL REPLACEMENT**  
Description:  
Lead Agency:  
Contact: Clay Jordan  
Construction Start: December 31, 2016  
Construction End: August 31, 2019

[Zoom to](#) [Get Directions](#)

3 Week Schedule

Activity	This Week							2nd Week							3rd Week				
	M	T	W	TH	F	S	S	M	T	W	TH	F	S	S	M	T	W	TH	F
Date	5/9	5/10	5/11	5/12	5/13	5/14	5/15	5/16	5/17	5/18	5/19	5/20	5/21	5/22	5/23	5/24	5/25	5/26	5/27
<b>This is a 4/10 Work Schedule</b>																			
<b>NW 23rd &amp; NW Wilson St C06 thru C09</b>																			
Pre TV on NW Wilson St (NW 23rd to NW 27th)																			
Procure No Parking																			
Set up PCMS's																			
Start MH #10 Install (Night Work Only)																			
Install 36" RCP MH #10 to MH #11 (248')																			
Set MH #11																			
Install 36" RCP MH #11 to MH #12 (271')																			



ArcGIS REST Services Directory

Home > [services](#)

[JSON](#)

Folder: /

Current Version: 10.41

Services:

- [Adopt a bench 2015](#) (FeatureServer)
- [AlbinaCommunityPlan](#) (FeatureServer)
- [beta\\_cc2035](#) (FeatureServer)
- [BetterNaito2016](#) (FeatureServer)
- [BikeCountLocations](#) (FeatureServer)
- [Bridge Inventory 2015 complete](#) (FeatureServer)
- [brownfields\\_bps](#) (FeatureServer)
- [business\\_district\\_ago](#) (FeatureServer)
- [CC\\_scenic\\_resources](#) (FeatureServer)
- [CIP\\_all](#) (FeatureServer)
- [CIP Construction 2016](#) (FeatureServer)
- [city owned nri lots](#) (FeatureServer)
- [cityPropertyExplorationAGO](#) (FeatureServer)
- [CLink](#) (FeatureServer)
- [CM1 zones mayor map](#) (FeatureServer)
- [COPSurplusProps](#) (FeatureServer)
- [crash\\_rank\\_top25](#) (FeatureServer)
- [Crashes By Location 2005 2014](#) (FeatureServer)
- [csa\\_ago](#) (FeatureServer)













**ZERO HARM**  
NONE SAFETY PERSONAL

SIDEWALK  
CLOSED













SE STARK

CYRIL's

811 STARK  
Creative Office  
& Retail

**YOKE & CURTIS**  
GENERAL CONTRACTORS  
**BUILDING EXCELLENCE**  
NATURAL TRANSPARENCY - EARNED TRUST  
503.646.2123 yokeandcurtis.com  
CCB# 55644

THE  
A. J. B. B. B.  
P. A. J. B. B. B.  
K. A. J. B. B. B.  
L. A. J. B. B. B.

BEAM

DETOUR  
→

DETOUR  
←

SIDEWALK  
CLOSED