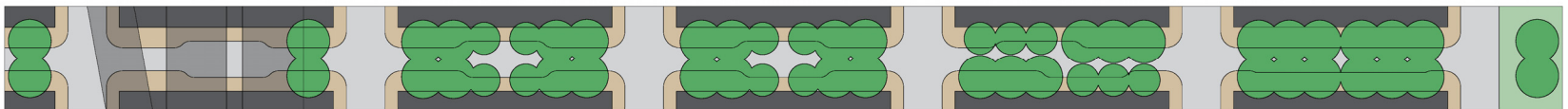


*Amend River District Right-of-Way
Standards for NW Pettygrove St.*

Portland City Council

January 25, 2012



UPDATED
**RIVER DISTRICT
RIGHT-OF-WAY STANDARDS**

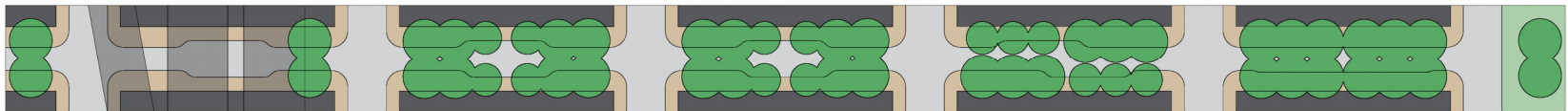
Framework Plans
Performance Criteria
Design Standards



- *River District Right-of-Way Standards* guide street improvements, including streetscape improvements as a result of redevelopment
- *Typical and Special Function Streets*
- Designate NW Pettygrove a “Special Function” street

Pettygrove Green Street

- “Pettygrove Green Street” identified in:
 - *Northwest District Plan (2003)*
 - *North of Lovejoy Project (2005)*
 - *North Pearl District Plan (2008)*
- “Green street”: Stormwater and pedestrian/bicycle features

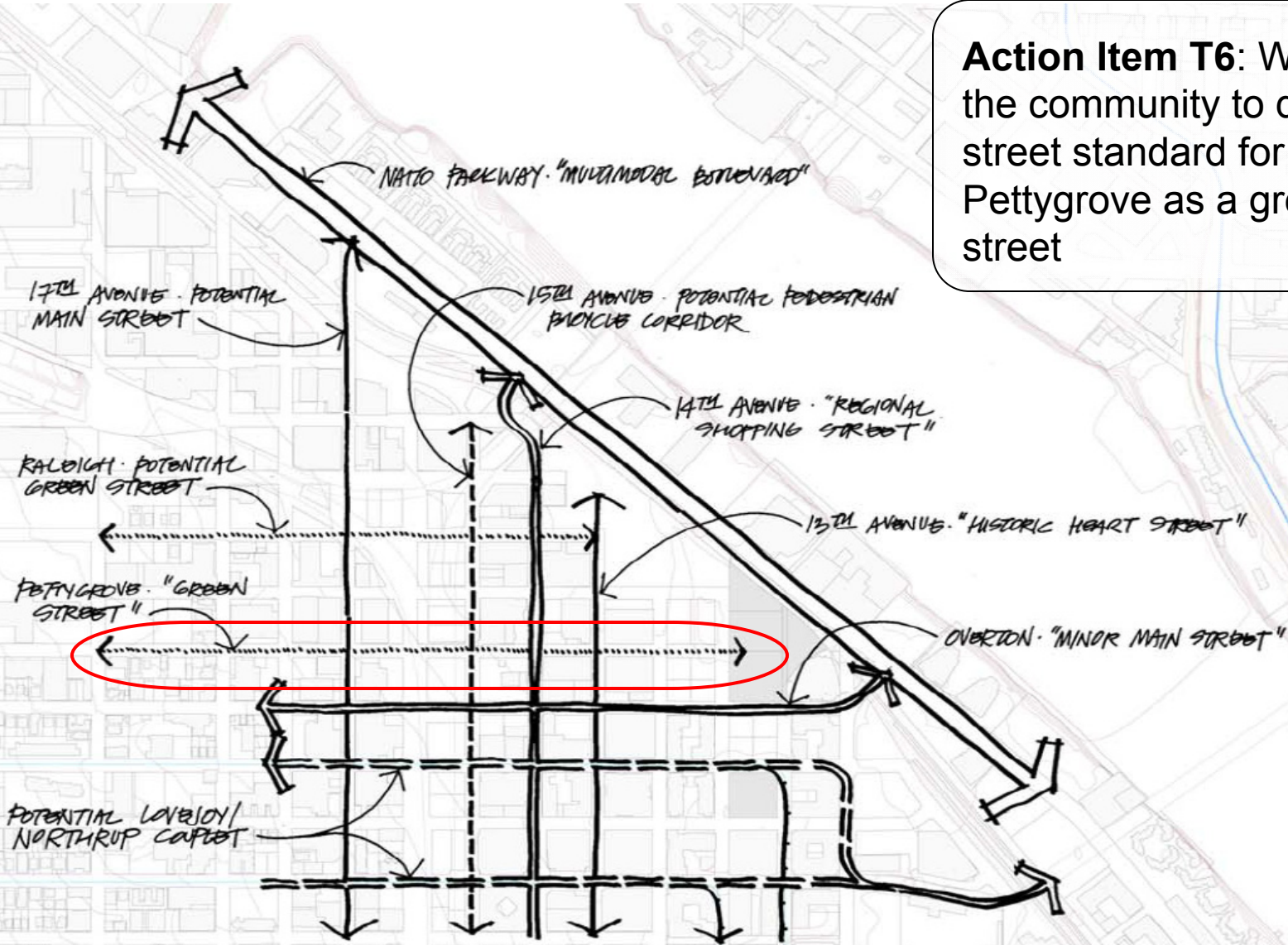


Area Map

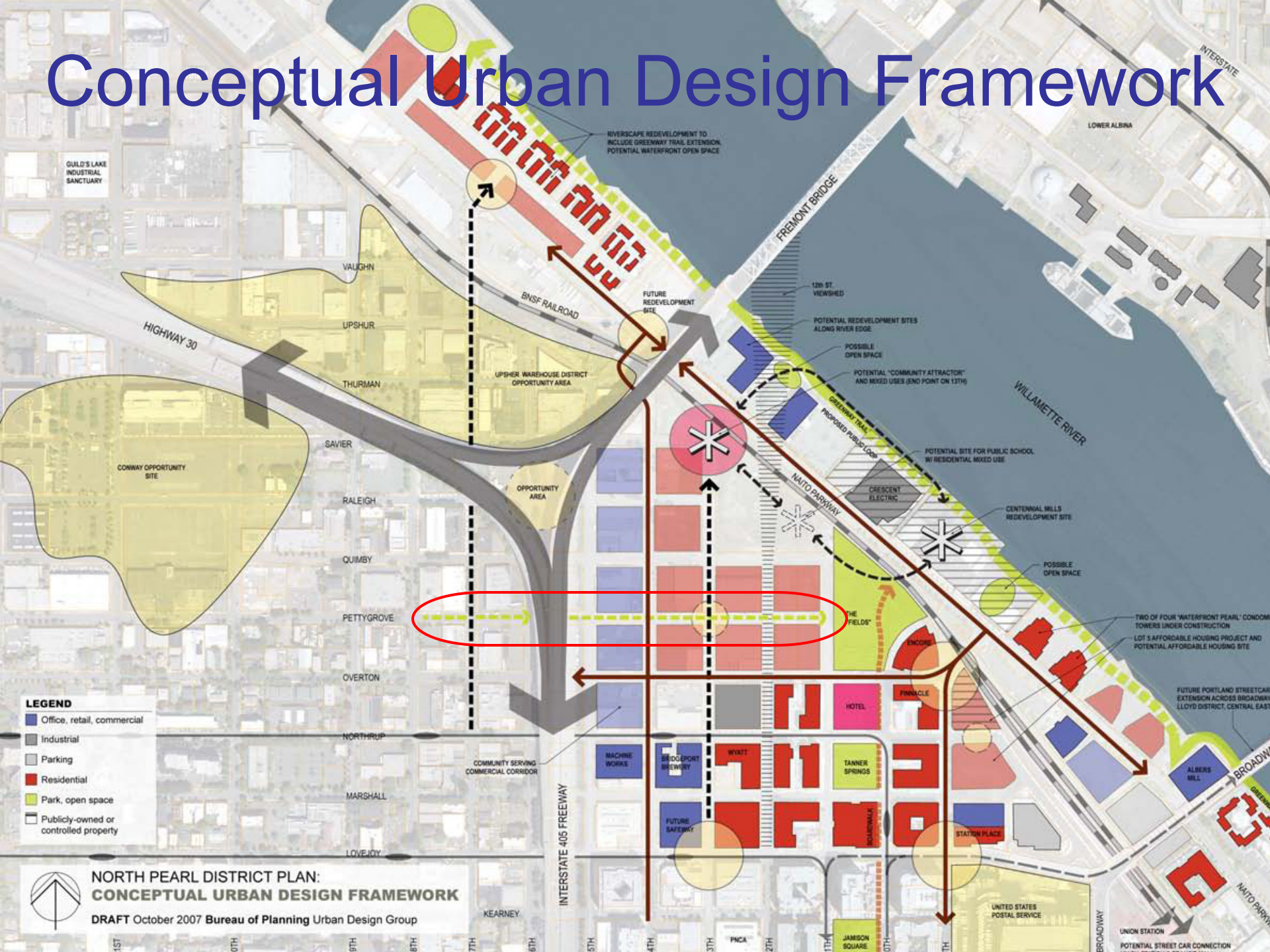


North Pearl District Plan

Action Item T6: Work with the community to design street standard for NW Pettygrove as a green street



Conceptual Urban Design Framework



**NORTH PEARL DISTRICT PLAN:
CONCEPTUAL URBAN DESIGN FRAMEWORK**
DRAFT October 2007 Bureau of Planning Urban Design Group

RALEIGH

Area map

NATO

QUIMBY

14TH

13TH

PETTYGROVE

The Fields Park

405

12TH

11TH

OVERTON

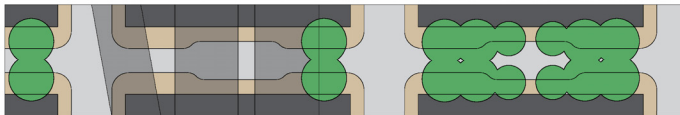
15TH

NORTHROP



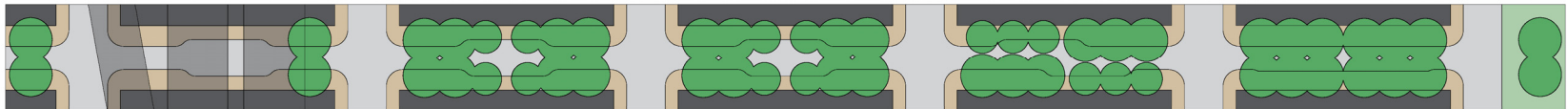
Pettygrove looking west

- Local Service Traffic Street
- Recommended for City Bikeway designation in the *Portland Bicycle Plan for 2030*
- Zoned *Central Employment (EX)*



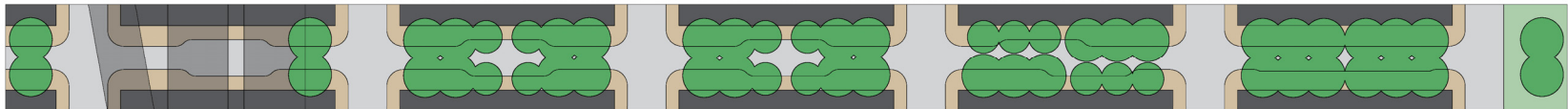
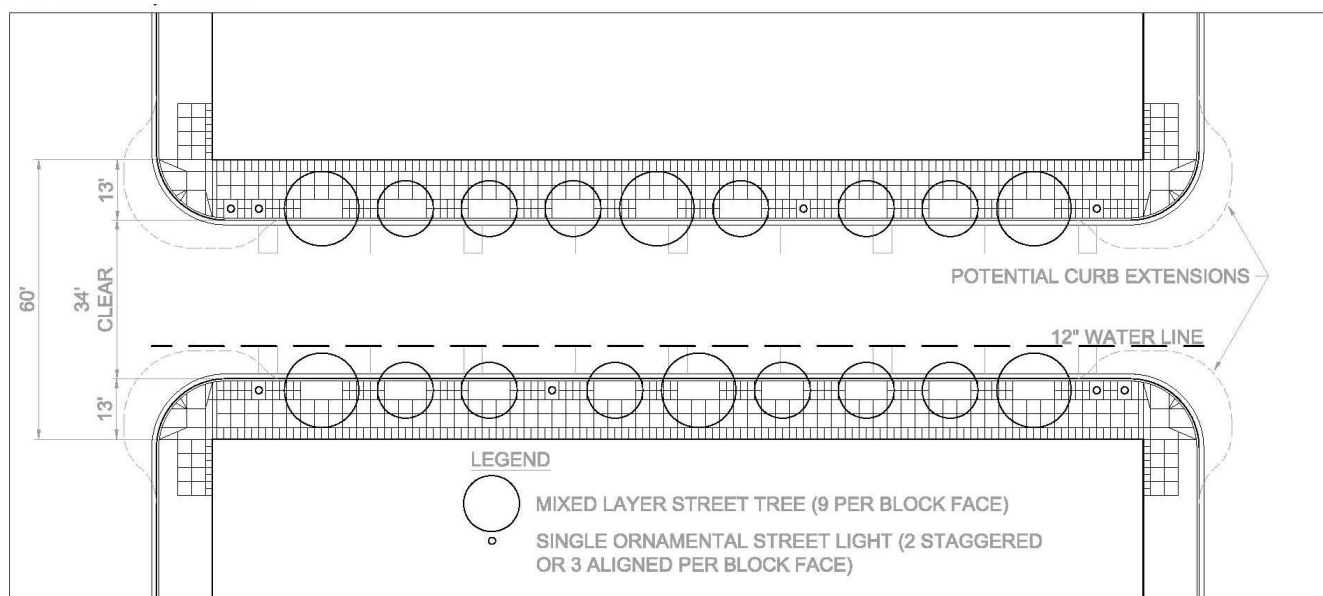
Pettygrove Green Street

- Four meetings with stakeholders
- Goals and “Big ideas”
 - Large canopy
 - Capture stormwater
 - Inviting street for pedestrians and cyclists
 - Open to motor vehicles (two-way)
 - Flexible street design
 - Different design from “Typical Street”
 - More “organic,” “park like” feel
 - Opportunities for sitting down and contemplation

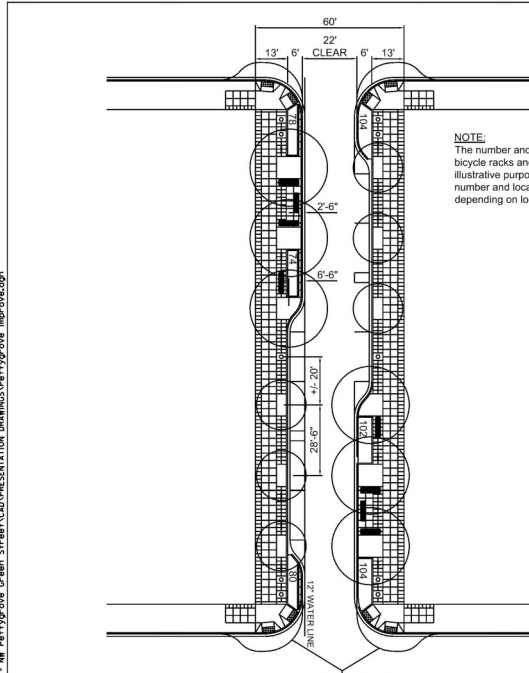


Pettygrove Green Street

Existing Standard



Pettygrove Green Street



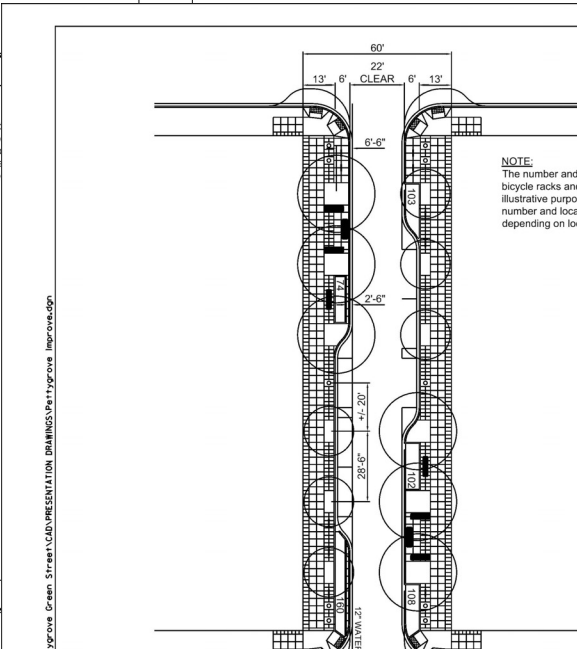
Four (4) motor vehicle parking spaces per block face, mix of larger canopy trees and

- LEGEND**
- BENCH (2-4 PER BLOCK FACE)
 - STAPLE BICYCLE RACK (2-5 PER BLOCK FACE)
 - STREET TREE (6 PER BLOCK FACE)
 - STREET LIGHT (3 PER BLOCK FACE)
 - STORMWATER FACILITY (+/- 250 SF PER BLOCK FACE)

PETTYGROVE STREET: OPTION A

NO.	REVISIONS	DATE	BY	APPROVED

CITY ENGINEER: AKR
CITY OF PORTLAND, OREGON



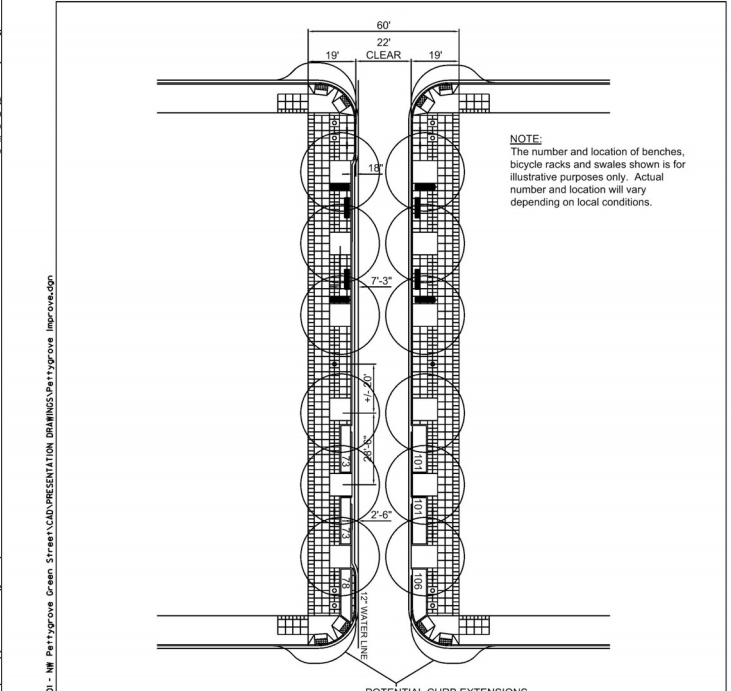
Three (3) motor vehicle parking spaces per block face, mix of larger canopy trees and

- LEGEND**
- BENCH (2-4 PER BLOCK FACE)
 - STAPLE BICYCLE RACK (2-5 PER BLOCK FACE)
 - STREET TREE (6 PER BLOCK FACE)
 - STREET LIGHT (3 PER BLOCK FACE)
 - STORMWATER FACILITY (+/- 250 SF PER BLOCK FACE)

PETTYGROVE STREET: OPTION B

NO.	REVISIONS	DATE	BY	APPROVED

CITY ENGINEER: AKR
CITY OF PORTLAND, OREGON



NO MOTOR VEHICLE PARKING SPACES, LARGER CANOPY TREES

- LEGEND**
- BENCH (2-4 PER BLOCK FACE)
 - STAPLE BICYCLE RACK (2-5 PER BLOCK FACE)
 - STREET TREE (6 PER BLOCK FACE)
 - STREET LIGHT (3 PER BLOCK FACE)
 - STORMWATER FACILITY (+/- 250 SF PER BLOCK FACE)

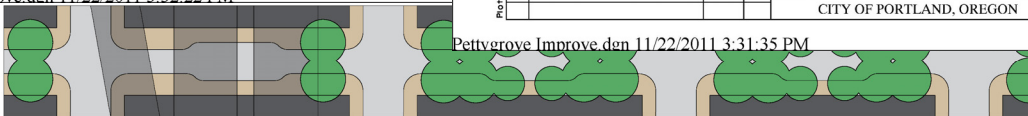
PETTYGROVE STREET: OPTION C

NO.	REVISIONS	DATE	BY	APPROVED

CITY ENGINEER: AKR
CITY OF PORTLAND, OREGON

The selection and use of this Standard Drawing, while designed in accordance with generally accepted engineering principles and practices, is the sole responsibility of the user.
Note: All material and workmanship shall be in accordance with the City of Portland Standard Construction Specifications.

STANDARD PLAN NO.
RD-25C



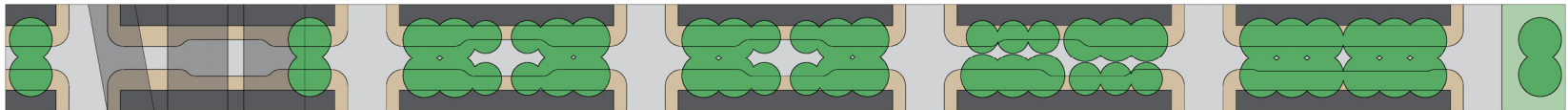
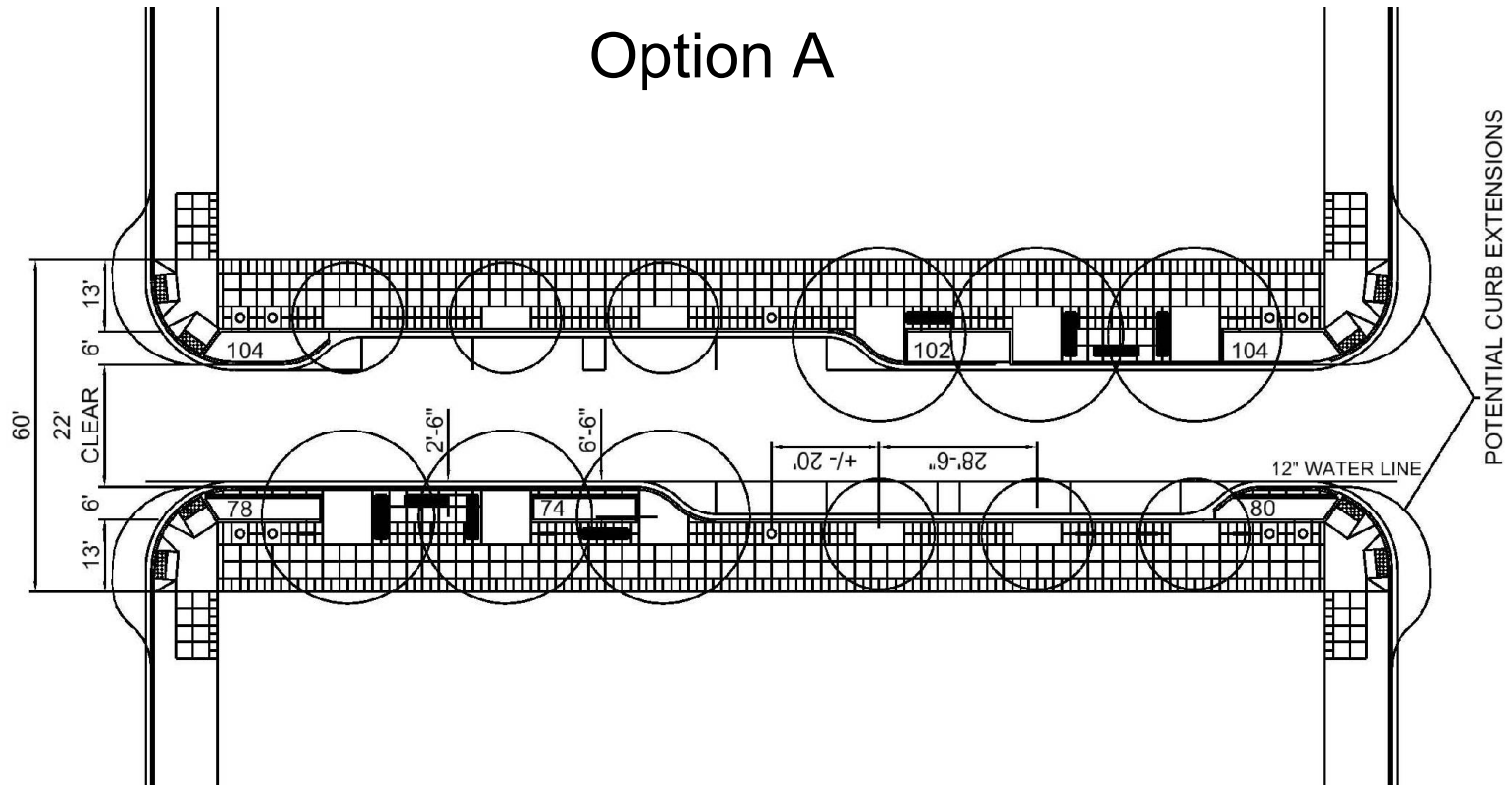
Pettygrove Improve.den 11/22/2011 3:32:22 PM

Pettygrove Improve.den 11/22/2011 3:31:35 PM

Pettygrove Improve.den 11/22/2011 3:31:01 PM

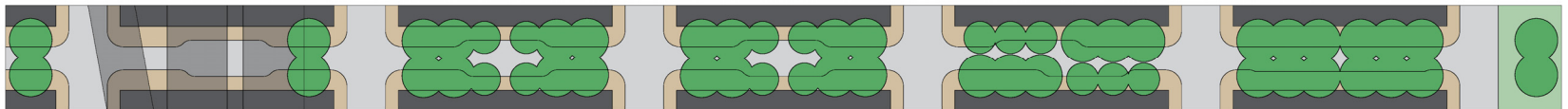
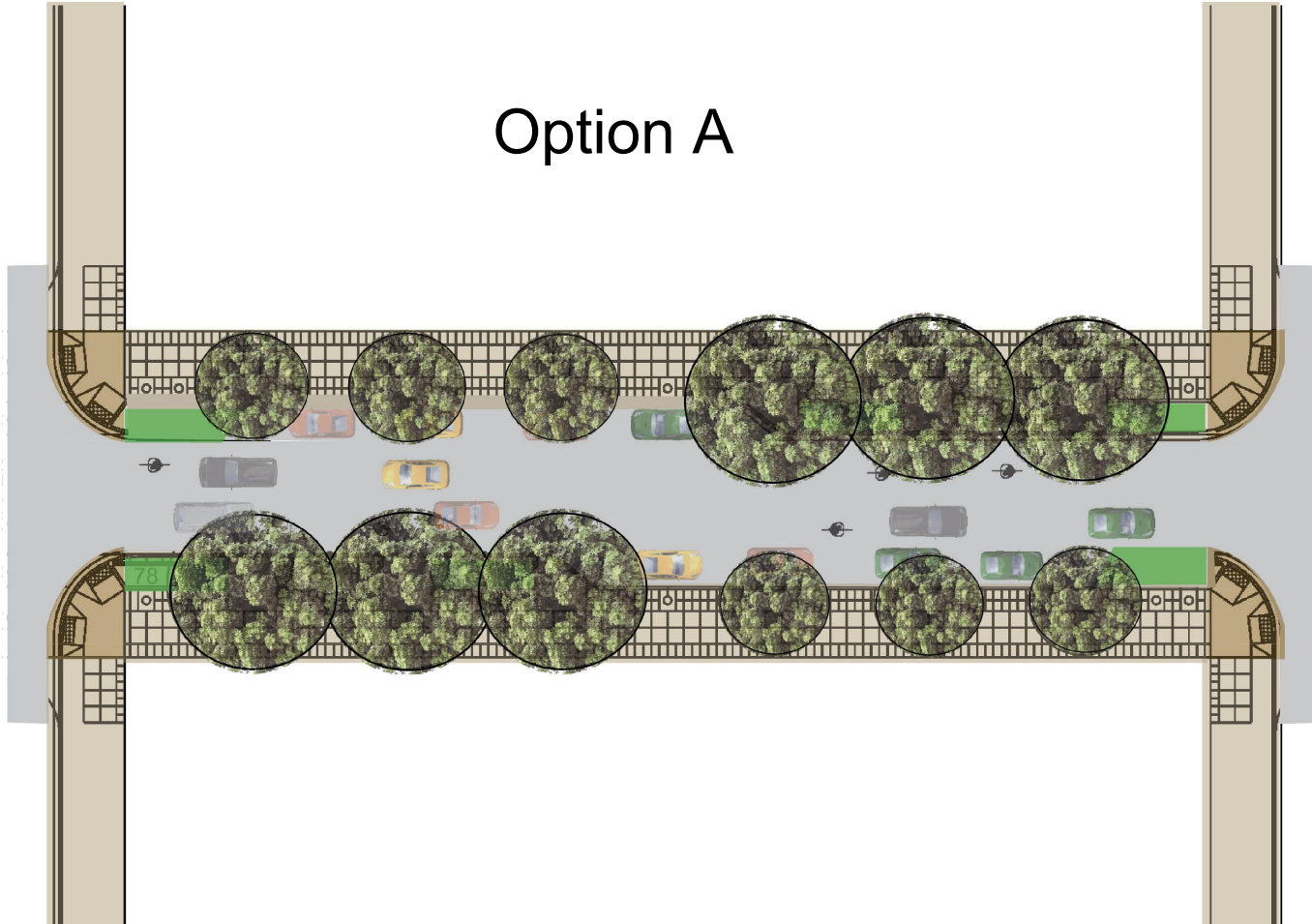
Pettygrove Green Street

Option A



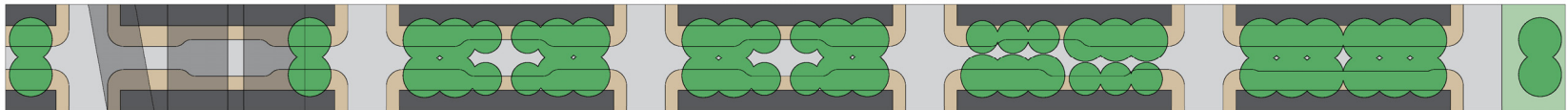
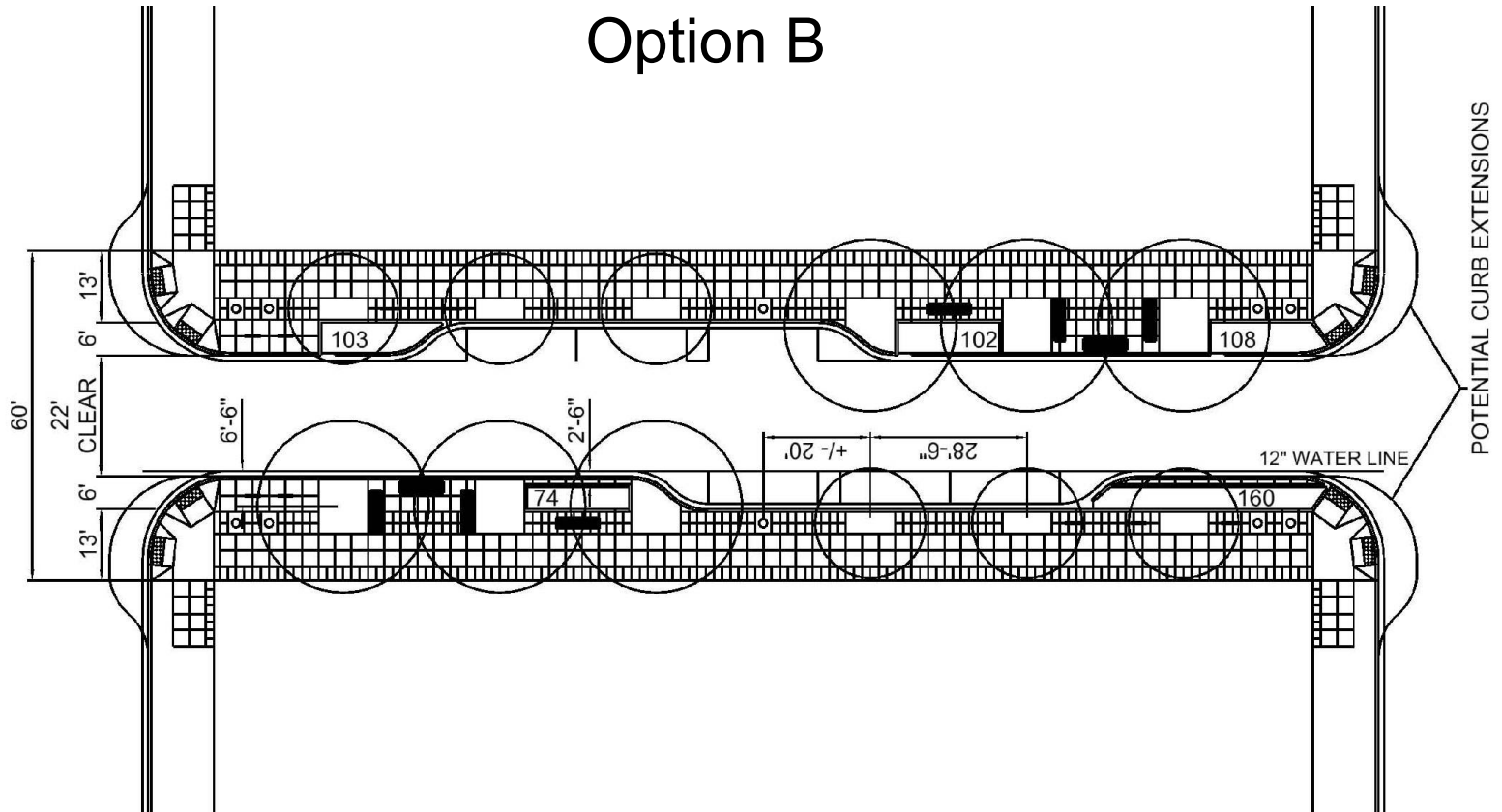
Pettygrove Green Street

Option A



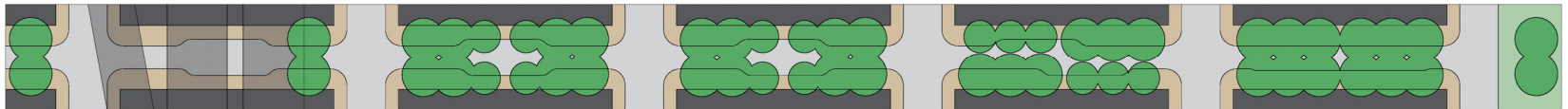
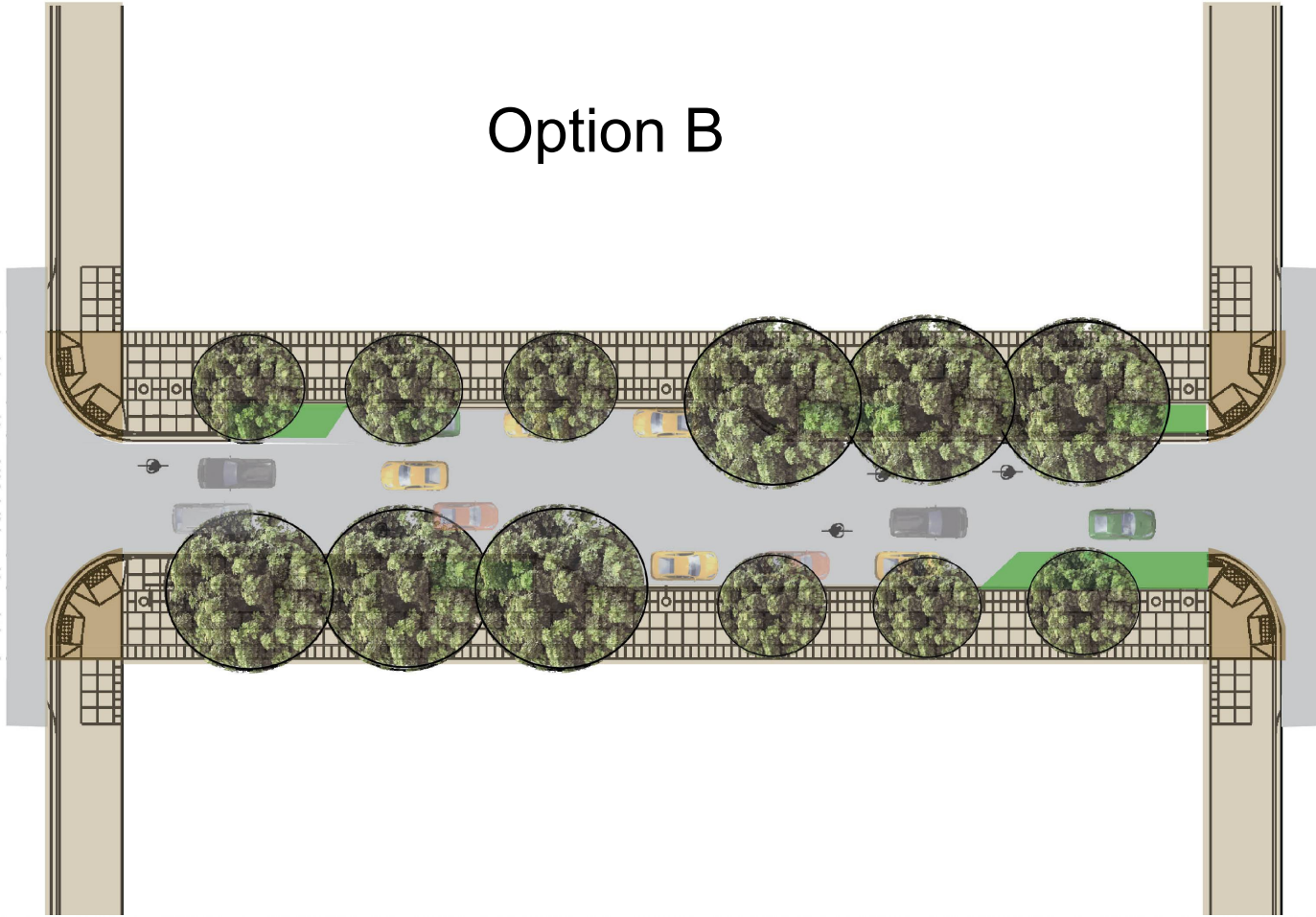
Pettygrove Green Street

Option B



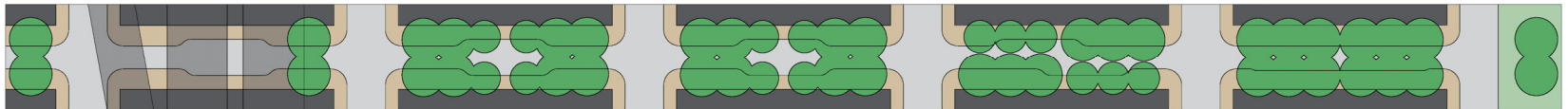
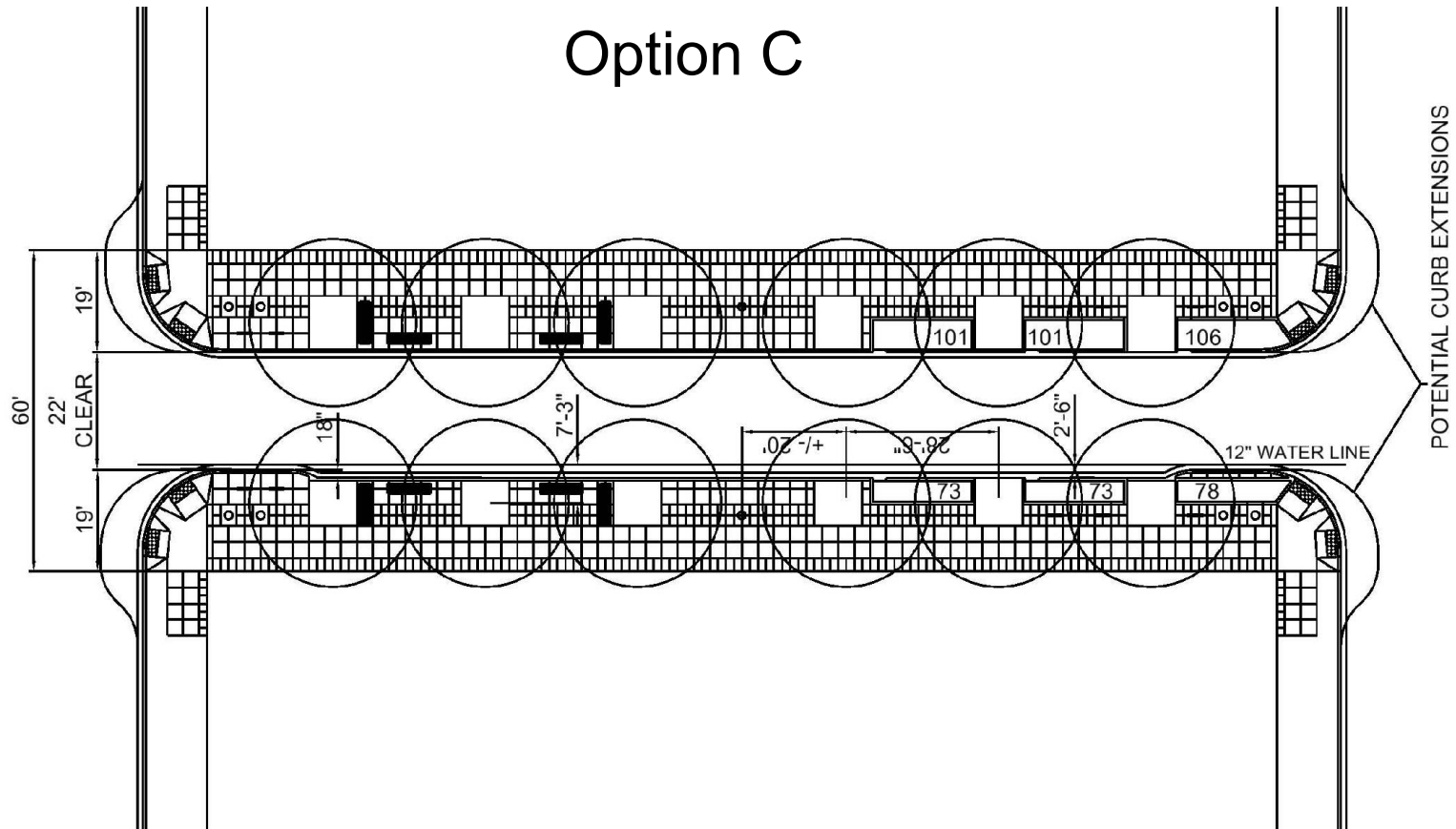
Pettygrove Green Street

Option B



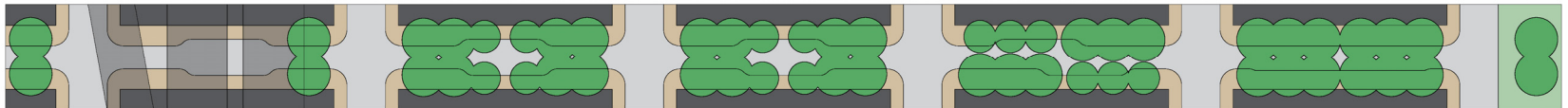
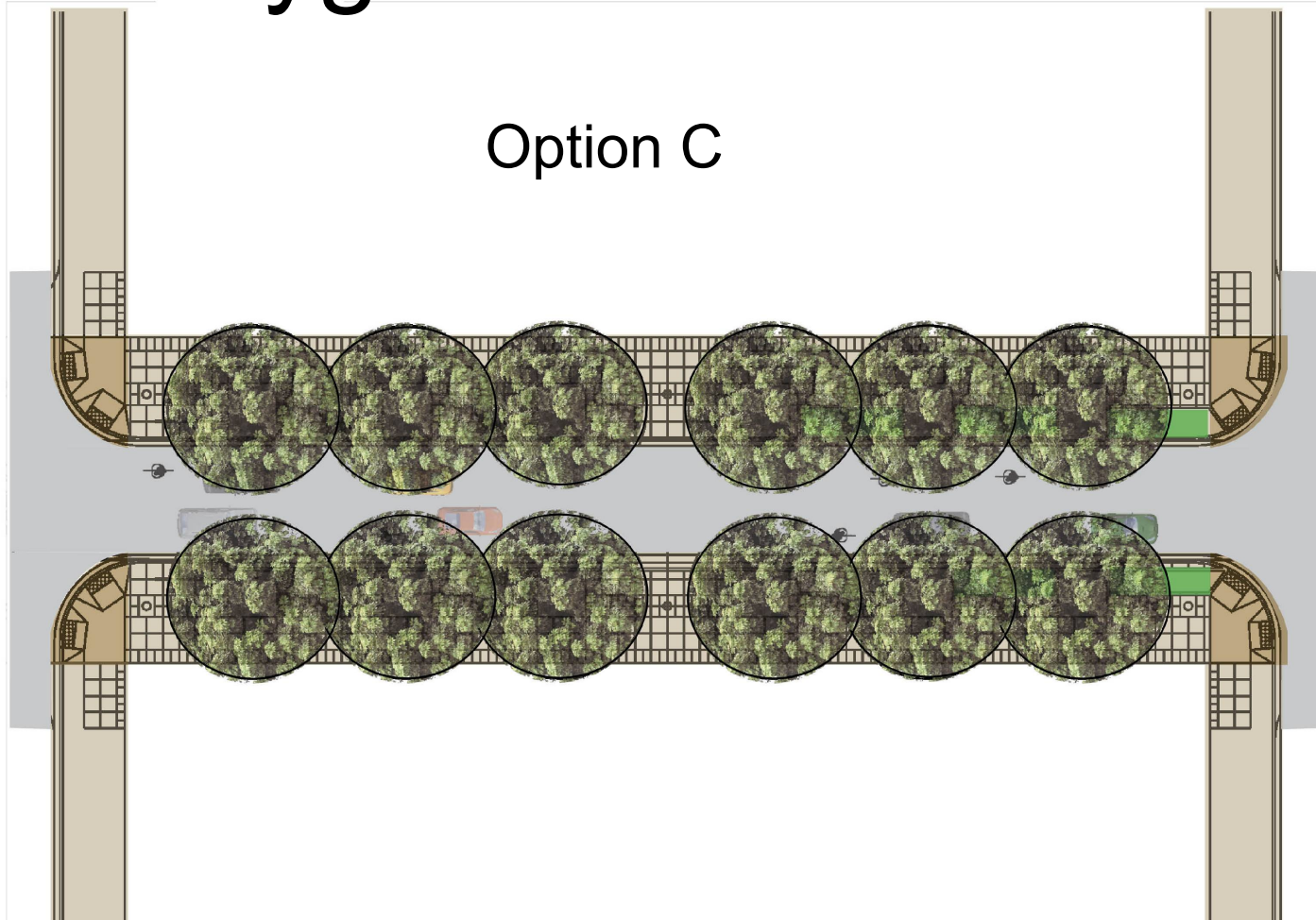
Pettygrove Green Street

Option C

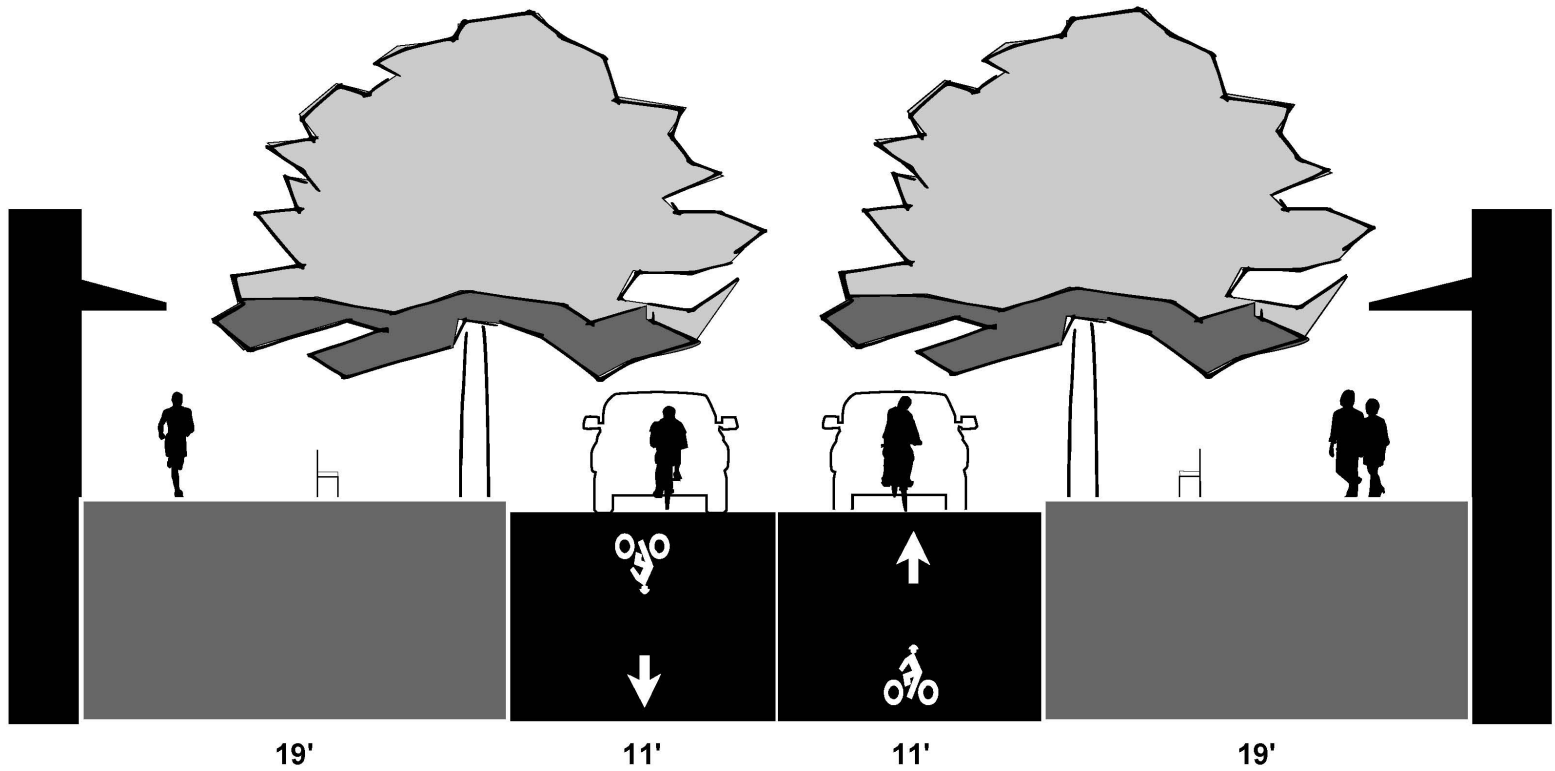


Pettygrove Green Street

Option C

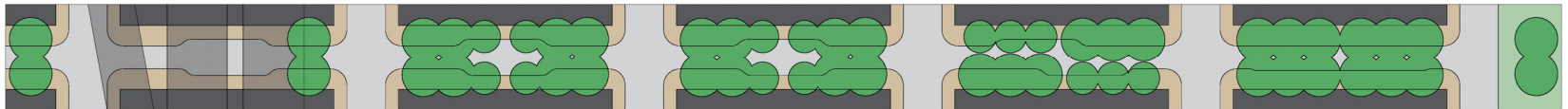
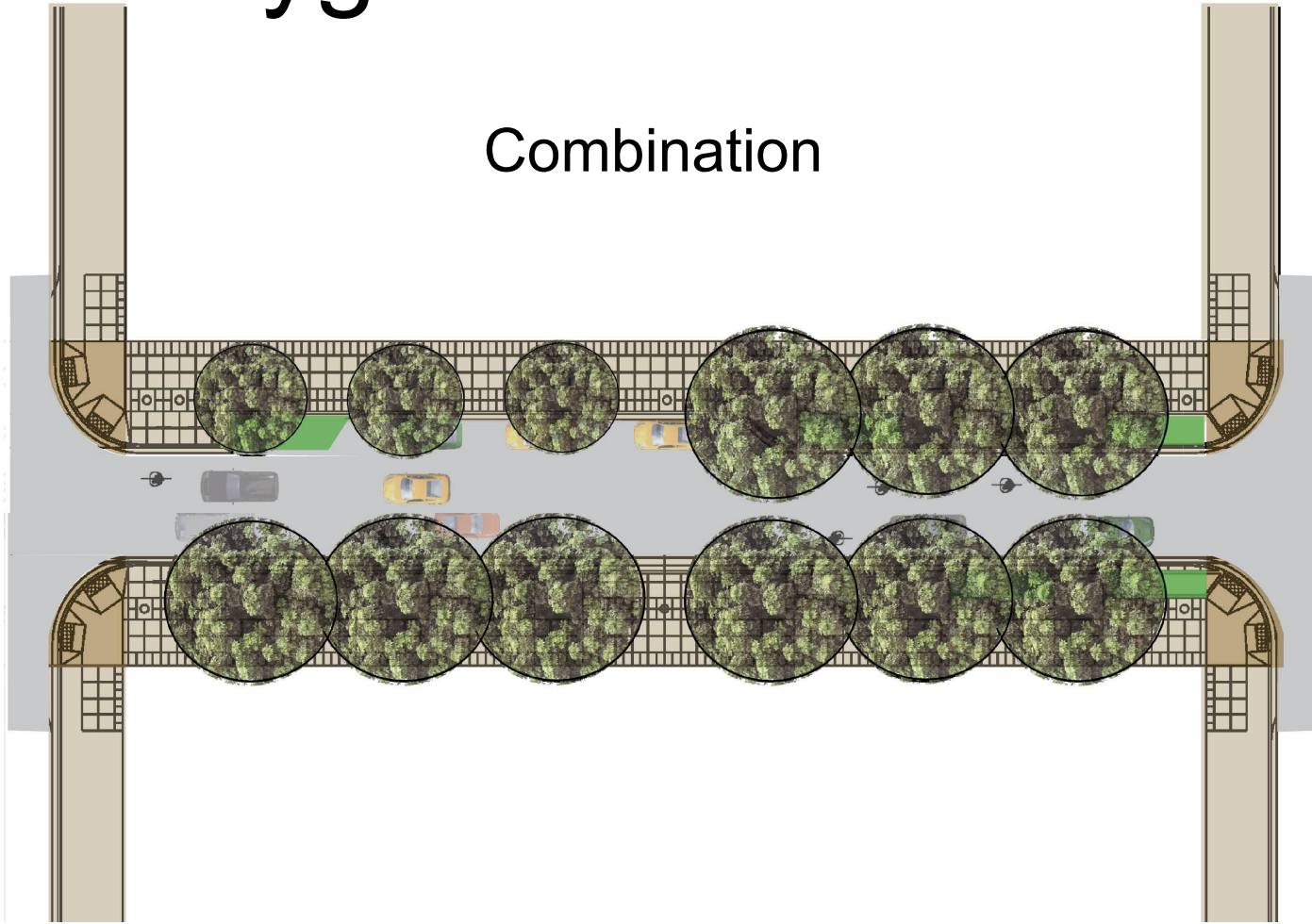


Option C

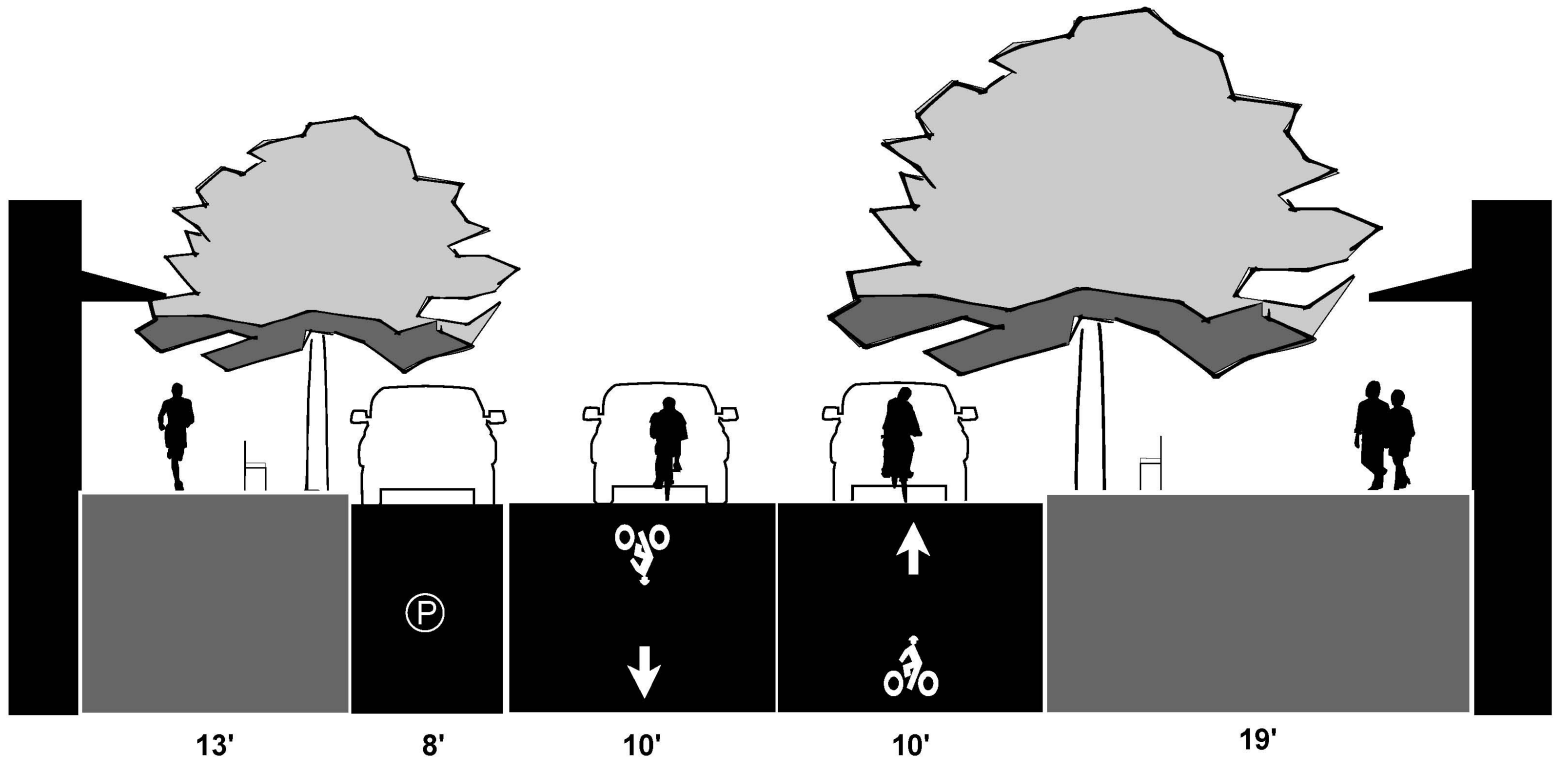


Pettygrove Green Street

Combination

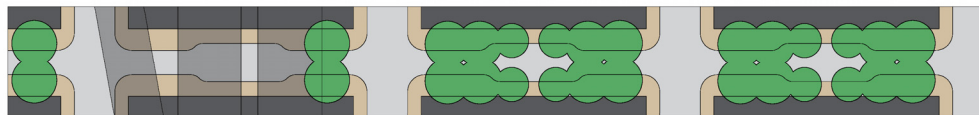


Combination



Performance Criteria

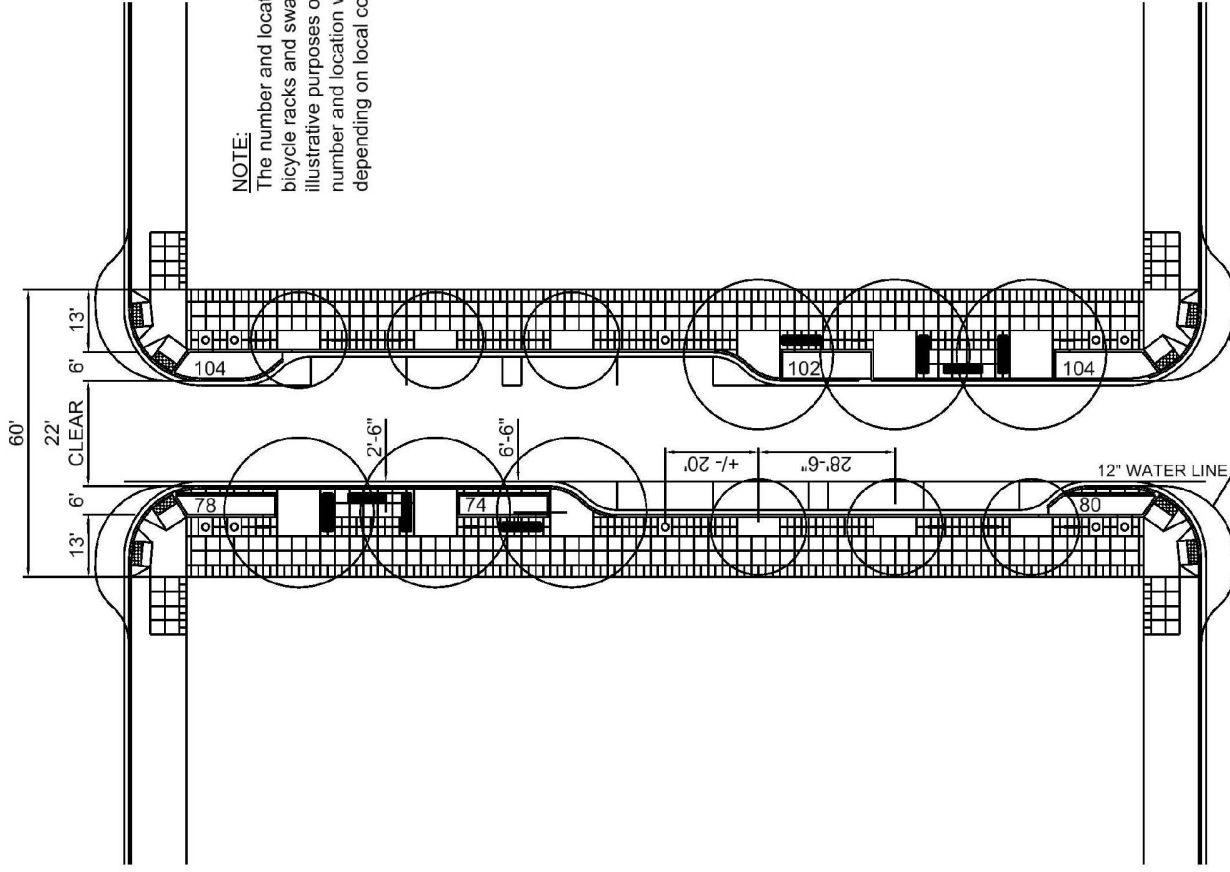
- 13 to 19 ft wide sidewalks
- Large canopy trees
- 2-4 benches
- Bicycle parking
- Special street light
- Stormwater facilities



Summary

- Creates a new signature street for Pearl
- Implements long held vision for street
- Addresses stormwater management needs
- Enhances environment for pedestrians and cyclists
- Offers design flexibility to adjacent property owners

Thank you



NOTE:
The number and location of benches, bicycle racks and swales shown is for illustrative purposes only. Actual number and location will vary depending on local conditions.

POTENTIAL CURB EXTENSIONS

Four (4) motor vehicle parking spaces per block face, mix of larger canopy trees and broad headed trees

LEGEND

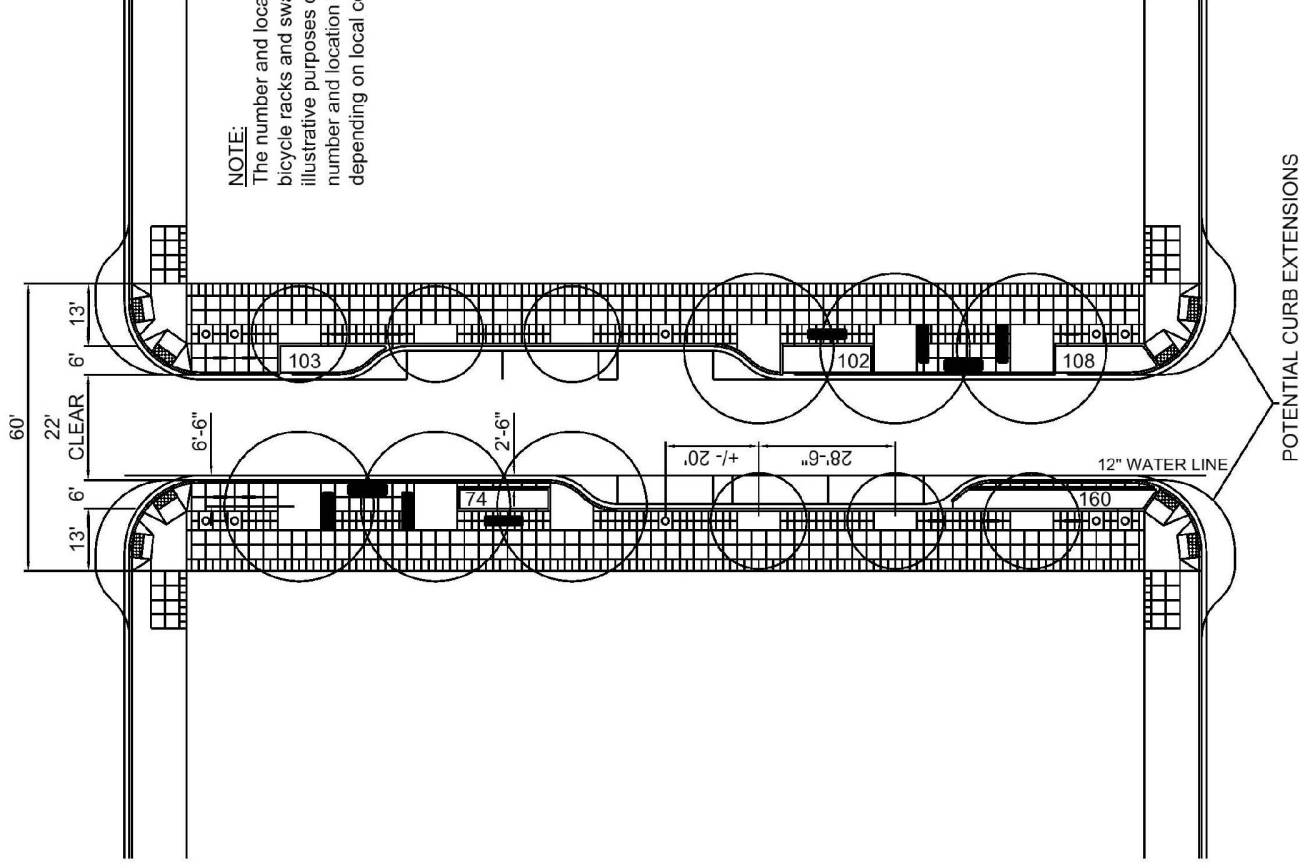
- BENCH (2-4 PER BLOCK FACE)
- STAPLE BICYCLE RACK (2-5 PER BLOCK FACE)
- STREET TREE (6 PER BLOCK FACE)
- STREET LIGHT (3 PER BLOCK FACE)
- STORMWATER FACILITY (+/- 250 SF PER BLOCK FACE)

The selection and use of this Standard Drawing, while designed in accordance with generally accepted engineering principles and practices, is the sole responsibility of the user.

Note: Material and workmanship shall be in accordance with the City of Portland Standard Construction Specifications.

PETTYGROVE STREET: OPTION A

NO.	REVISIONS	DATE	BY	APPROVED
			ANKR	
			CITY ENGINEER	
			DATE	
			CITY OF PORTLAND, OREGON	
			STANDARD PLAN NO.	RD-25A



NOTE:
The number and location of benches, bicycle racks and swales shown is for illustrative purposes only. Actual number and location will vary depending on local conditions.

Three (3) motor vehicle parking spaces per block face, mix of larger canopy trees and broad headed trees

LEGEND

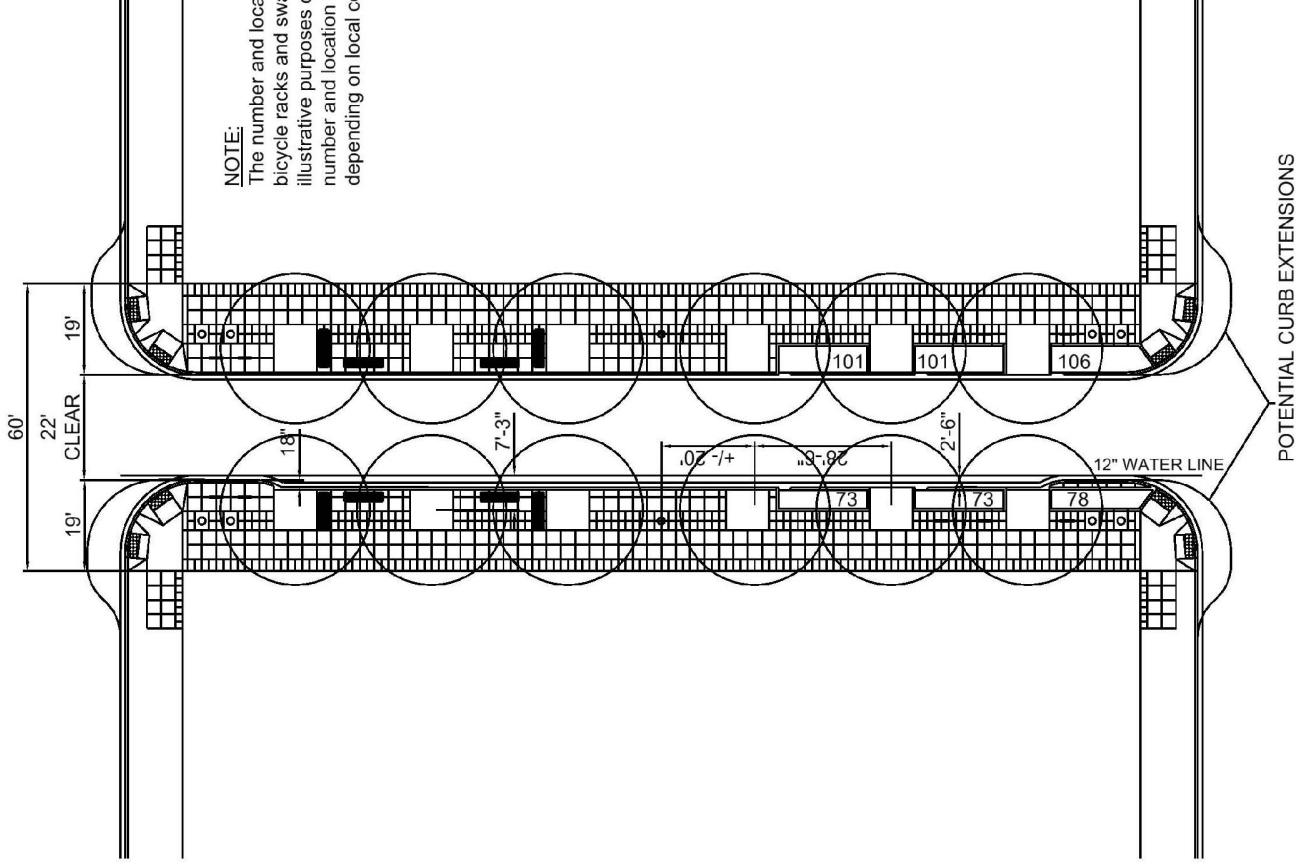
- BENCH (2-4 PER BLOCK FACE)
- STAPLE BICYCLE RACK (2-5 PER BLOCK FACE)
- STREET TREE (6 PER BLOCK FACE)
- STREET LIGHT (3 PER BLOCK FACE)
- STORMWATER FACILITY (+/- 250 SF PER BLOCK FACE)

The selection and use of this Standard Drawing, while designed in accordance with generally accepted engineering principles and practices, is the sole responsibility of the user.

Note: Material and workmanship shall be in accordance with the City of Portland Standard Construction Specifications.

PETTYGROVE STREET: OPTION B

NO.	REVISIONS	DATE	BY	APPROVED
			ANKR	
			CITY ENGINEER	
			DATE	
			CITY OF PORTLAND, OREGON	
			STANDARD PLAN NO.	RD-25B



NOTE:
The number and location of benches, bicycle racks and swales shown is for illustrative purposes only. Actual number and location will vary depending on local conditions.

POTENTIAL CURB EXTENSIONS

NO MOTOR VEHICLE PARKING SPACES, LARGER CANOPY TREES

LEGEND

- BENCH (2-4 PER BLOCK FACE)
- STAPLE BICYCLE RACK (2-5 PER BLOCK FACE)
- STREET TREE (6 PER BLOCK FACE)
- STREET LIGHT (3 PER BLOCK FACE)
- STORMWATER FACILITY (+/- 250 SF PER BLOCK FACE)

The selection and use of this Standard Drawing, while designed in accordance with generally accepted engineering principles and practices, is the sole responsibility of the user.

Note: Material and workmanship shall be in accordance with the City of Portland Standard Construction Specifications.

PETTYGROVE STREET: OPTION C

NO.	REVISIONS	DATE	BY	APPROVED
			ANKR	
			CITY ENGINEER	
			DATE	
			CITY OF PORTLAND, OREGON	
			STANDARD PLAN NO.	RD-25C