



City of Portland Bureau of Development Services

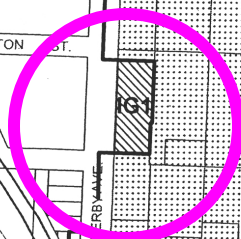
Staff Presentation to the
City Council

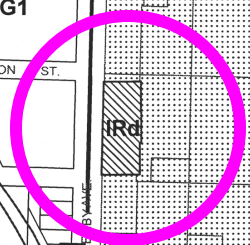
Land Use Review 13-146707 CP ZC
Legacy Emanuel Campus



Summary of the Proposal

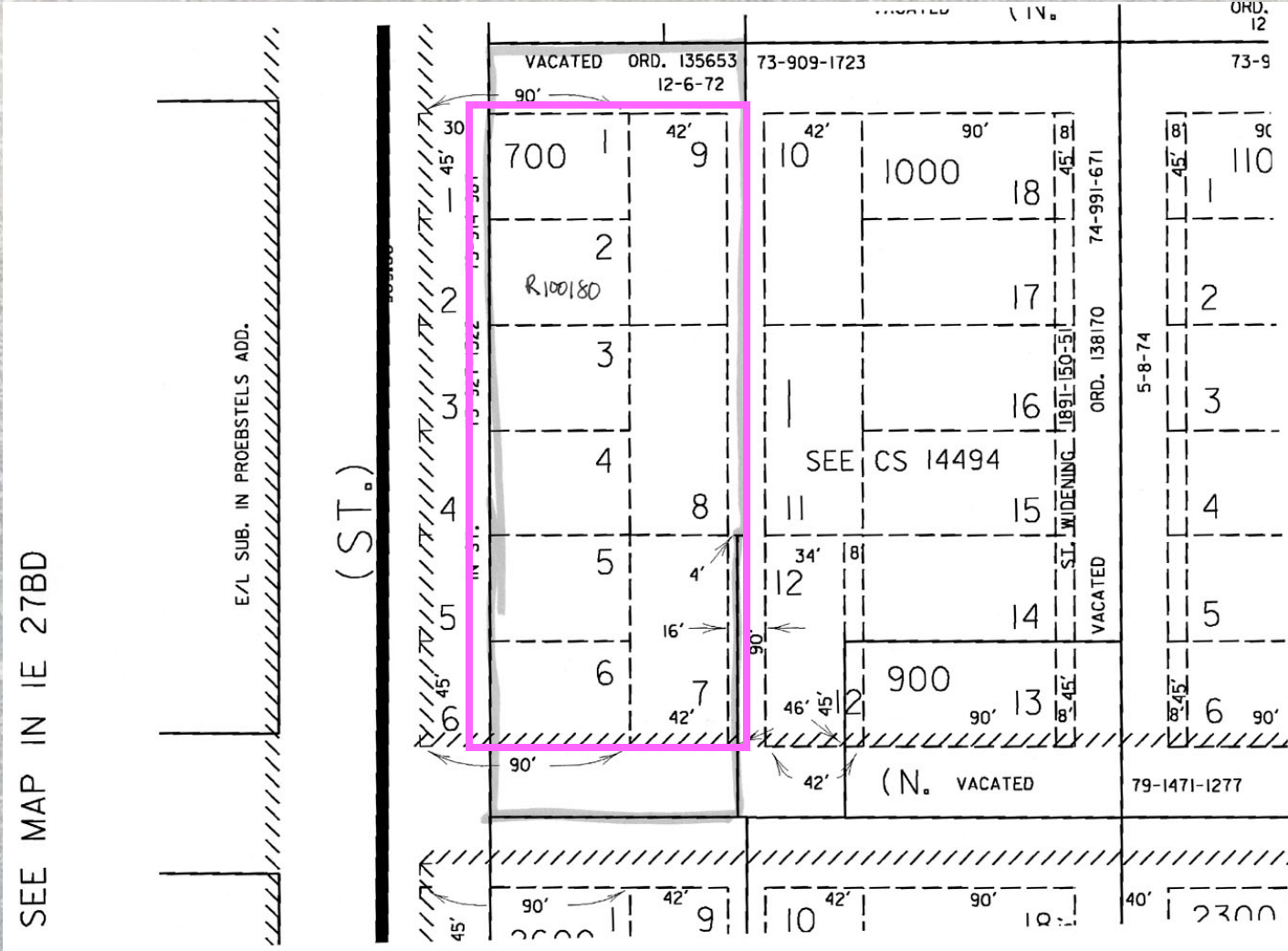
- **Applicant requests a Comprehensive Plan Map Amendment and Zone Map Amendment to rezone the site from Industrial [IG1] to Institutional [IRd].**







Detail of Tax Lot 700

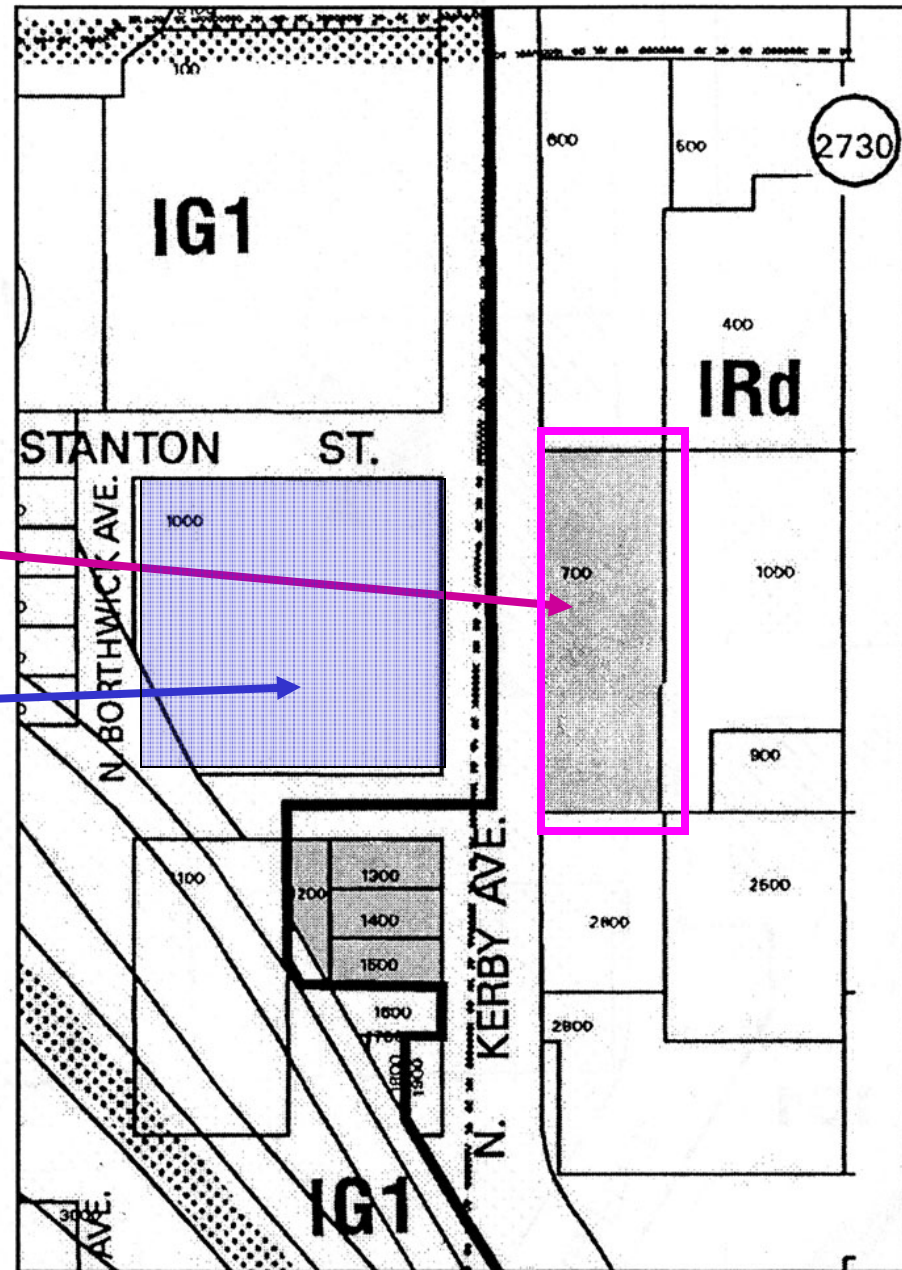




Map of Site

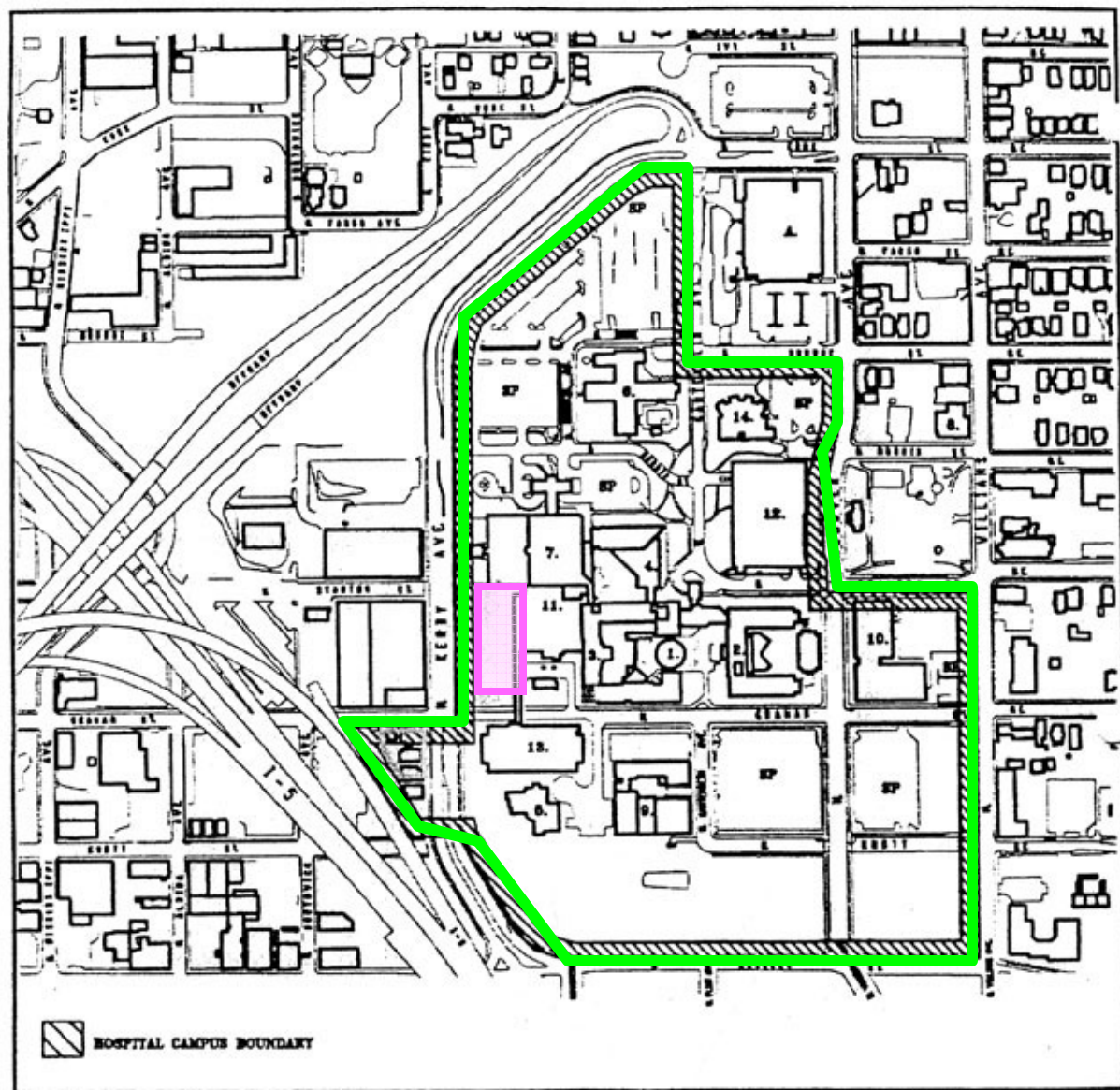
Parcel within the
approved IMP boundary

City of Portland
Bureau of Maintenance



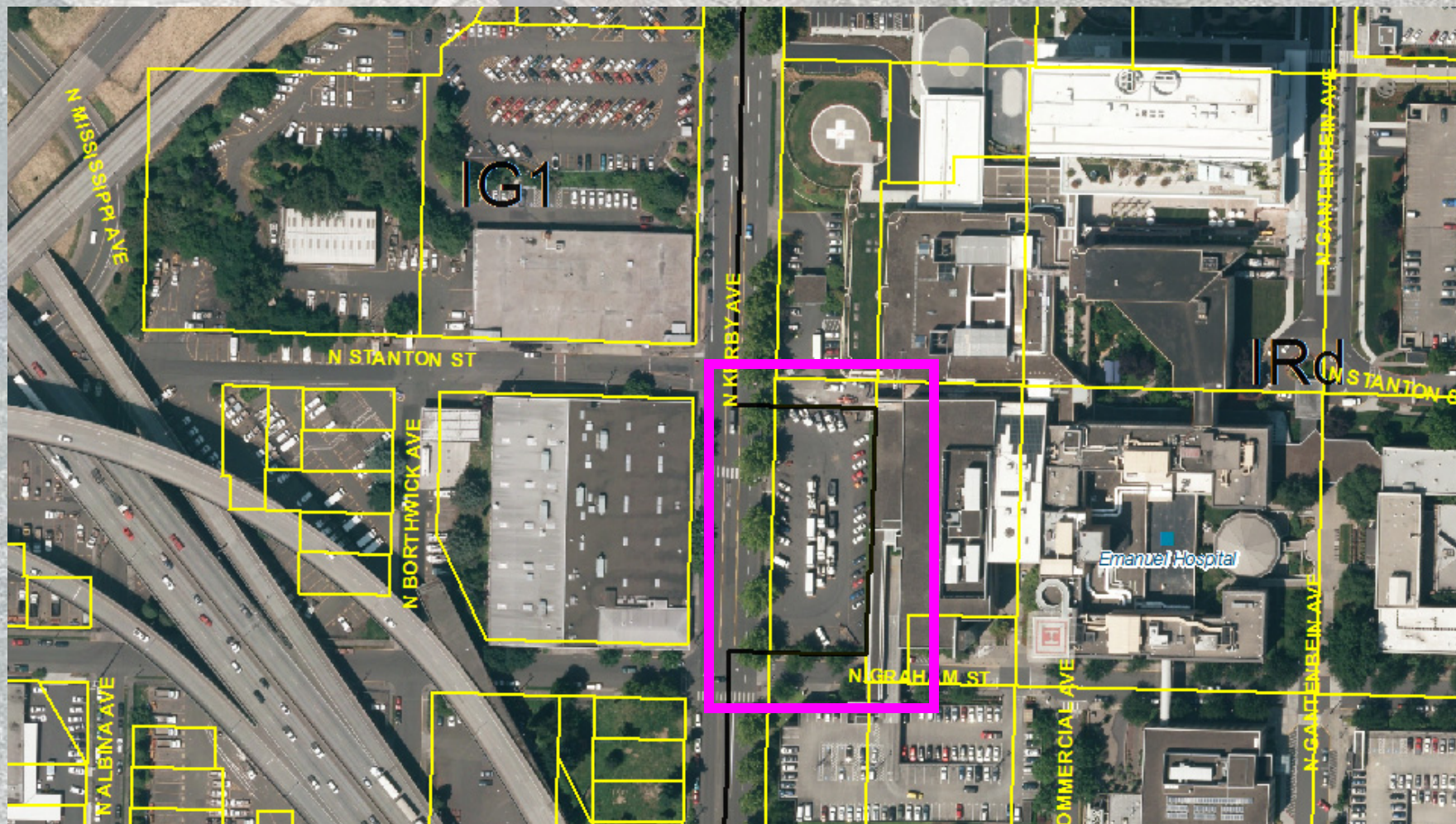


Map of Emanuel Campus





Aerial View





Street View

Current Industrial Service Use





Summary

Hearings Officer Recommendation

- **Approval of a Comprehensive Plan Map Amendment to change the designation of the site from Industrial Sanctuary (IS) to Institutional Campus (IC); and**
- **Approval of a Zoning Map Amendment to change the zoning on the site from General Industrial 1 zone (IG1) to Institutional Residential with a Design Overlay zone (IRd).**



Summary

Hearings Officer's Recommendation: Condition

Because a lease agreement between the City of Portland and Legacy Emanuel will allow an Industrial Service use to continue on the site until December 31, 2014, the Comprehensive Plan Map Amendment and concurrent Zone Map Amendment will become effective on **January 1, 2015.**

