

AMENDMENTS ADOPTED
12-19-12

185833

Submitted by
COMMISSIONER FRITZ
12-19-12

**ADDITIONS/ Deletions TO EXHIBIT A
Old Town Street Closure Ordinance**

Proposal Section:

Based on volume of calls for police service, medical response calls, noise issues and the ongoing concern for public safety, allow weekend closures of NW Couch St. to include:

- ❖ Two additional intersecting streets of NW 3rd between Everett and Burnside, and NW Davis between NW 2nd and 4th.
- ❖ Restrict the area to pedestrian-only traffic during specific evening hours.
- ❖ Establish the area as a no-parking zone during pedestrian-only hours.
- ❖ Define transportation zones for the use of taxi and limo services in order to ensure safe entry into and exit from the area.

The streets adjacent to the area will be open to normal traffic. NW 2nd Ave and NW 4th Ave will not be closed.

PPB will dedicate an additional four officers and a sergeant to the Street Closure District during the Pilot to provide enhanced police presence

Permanent signage will be provided that indicates that weekends (Friday and Saturday) specified holiday, and event to be determined by PPB in consultation with ONI and PBOT. Once the Pilot is over, the permanent signage shall be removed until such time as Council determines otherwise. Temporary closure signs by or over meters shall be used to indicate event time.

Prior to implementation of the Program there will be notification of the pilot and dates and times of closure to businesses, property owners and organizations in the neighborhood with web site information location as to the details of the closure and a phone contact.

The Program will include one trial period from December 28 through April 1. During the final weeks or after the initial pilot period, an analysis of data and survey will be conducted with a report to Council considered at a public hearing. The report back to Council comparing baseline data will include:

- All types and number of "calls for service" and PPB self-initiated actions
- Number of interactions between officers and citizens requiring use of force.
- All pedestrian related conflicts with automobiles and bicycles.
- All types of medical responses in the closure area.
- Noise complaints
- Unlicensed taxi complaints/citations
- Complaints about access for people with disabilities

The report to Council will also include:

- Survey information from residents, property owners and businesses in the area, and officers assigned to the area before and during the pilot. The survey will be formulated by Office of Neighborhood Involvement (ONI) staff in conjunction with Police Bureau, noise officer and medical responders.
- A report on costs incurred by Transportation, BDS, Police and Fire in the closure area.
- Proposals to pay for the expenses incurred, including ongoing expenses if the Program is continued after consultation with the Revenue Bureau.
- Any new OLCC licenses in the area.
- Analysis and recommendations from PPB, ONI, PBOT, BDS, BPS and the Revenue Bureau as to why the Program should or should not be continued.

Community:

Historically, the area between SW Oak and NW Glisan, from Naito Parkway to Broadway has been considered by the community's Old Town/Chinatown Vision-Development Plan as the "Old Town Nightlife District." The vision of this area is one that is clean, safe, lively, and pedestrian-friendly. The proposal to expand the evening pedestrian-only area is perfectly aligned with the goals of the Vision-Development Plan.

This Pilot is part of the City's strategy to address concerns in the Old Town/Chinatown neighborhood community. It is essential to receive input and feedback from area stakeholders before, during and after this pilot in order to ensure stakeholder interests are properly addressed. In keeping with this spirit of partnership, the Office of Neighborhood Involvement and Police Bureau will keep an open line of communication with the neighborhood and businesses. To provide feedback or concerns, please contact:

Exhibit A Street Closure Pilot Project Proposal

Update – Old Town/Chinatown, Winter 2012

185833

Proposal

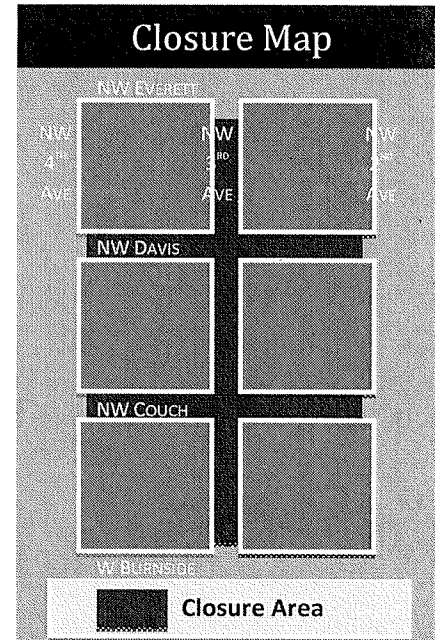
Based on volume of calls for police service and the ongoing concern for public safety, expand weekend closures of NW Couch St. to include two additional streets. Restrict the area to pedestrian-only traffic during specific evening hours. Establish the area as a no-parking zone during pedestrian-only hours. Define transportation zones for the use of taxi and limo services in order to ensure safe entry into and exit from the pedestrian-only area.

Closure Area

Between 10:00 PM and 3:00 AM on Fridays, Saturdays, and specific major holidays, the following streets will be closed to all vehicular traffic, including bicycles and skateboards:

- NW 3rd Ave from W Burnside to NW Everett
- NW Couch from NW 2nd Ave to NW 4th Ave
- NW Davis from NW 2nd Ave to NW 4th Ave

Streets adjacent to the area will be open to normal traffic. NW 2nd Avenue and NW 4th Avenue will not be closed.



Concerns

Community feedback continues to be an essential element of the pilot project. Ongoing discussions with stakeholders have identified several common concerns. The project is intended to serve the needs of the community, with changes to be implemented as needed to address the concerns and safety.

Some common concerns are listed below. A more comprehensive list of concerns is available separately.

Closure Time

The original 9:00 PM closure time received significant pushback from the community and daytime business in the area. Working with the Portland Bureau of Transportation, an agreement was reached to push closure time to 10:00 PM with a full shutdown of the streets to be completed by 11:00 PM in the evenings.

"Festival" Atmosphere

Concerns were raised that the closure would create a "block party" or "festival" atmosphere, increasing rather than addressing issues already present. The intent is to create pedestrian-only public right-of-ways. Streets will not be permitted to be blocked by event structures nor will public drinking be allowed.

Noise

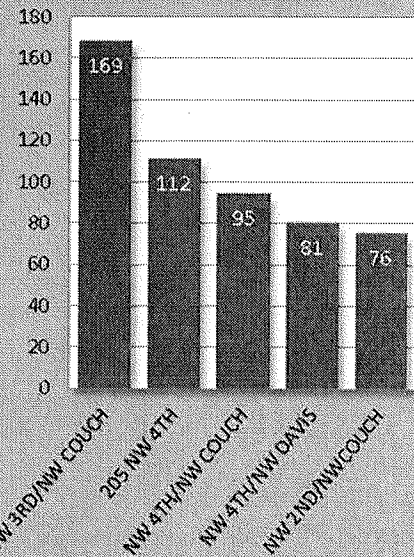
The closure area is known by the community to produce significant noise during nightlife hours. Concerns were raised that increased pedestrian accessibility may increase noise. Police in the area will be assigned noise meters to enforce noise ordinances. Citizens should file complaints if excessive noise is experienced.

Safety

Police receive a high volume of calls for service within the proposed closure area. Statistics collected between March and August 2012 place top locations for calls within or nearby the proposed closure area. Many of these calls are to address pedestrians struck by, or in conflict with, a vehicle. Adding NW 3rd Ave and NW Davis St. to the current pedestrian area on NW Couch will reduce the potential for such incidences and provide police with increased lines-of-sight while providing the public increased accessibility to officers.

In order to facilitate safe transportation into and out of the area, the proposal includes dedicated taxi, limo and pedi-cab zones. These zones will help maintain safe and orderly pedestrian traffic flow and allow officers to address concerns of illegal taxi activity.

Calls for Service Top Five Locations



03/01/2012 through 08/31/2012

Parking

The Entertainment Area will be designed to be open to pedestrian traffic only. In order to achieve this goal, no vehicles will be allowed to park on the streets within the closure area. "No Parking" signs will be posted in advance of the start date and a public information release will be sent out to the media to help educate the public about the changes. This will greatly reduce potential for vehicle-pedestrian conflict and damage to parked vehicles during the late evening hours.

Community

Historically, the area between SW Oak and NW Glisan, from Naito Parkway to Broadway has been considered by the community's Old Town/Chinatown Vision-Development Plan as the "Old Town Nightlife District." The vision of this area is one that is clean, safe, lively, and pedestrian-friendly. The proposal to expand the evening pedestrian-only area is perfectly aligned with the goals of the Vision-Development Plan.

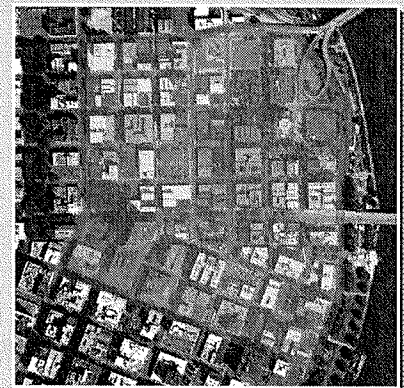
It is essential to receive input and feedback from area stakeholders. In keeping with this spirit of partnership, the Office of Neighborhood Involvement wishes to keep an open line of communication.

To provide feedback or concerns, or to request additional information, please contact:

Mike Boyer
Crime Prevention Coordinator
Office of Neighborhood Involvement
michael.boyer@portlandoregon.gov
503-823-5852

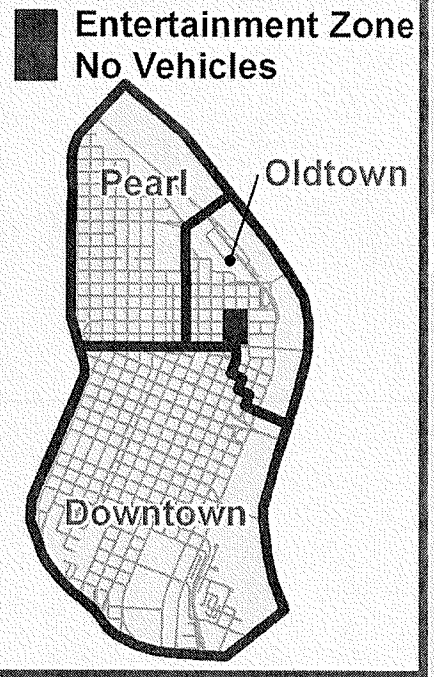
Patrick Owen
Community Service Aide
Office of Neighborhood Involvement
patrick.owen@portlandoregon.gov

Old Town/Chinatown Vision Plan Boundaries



Old Town Nightlife District
Proposed Street Closures

Proposed Downtown Entertainment Zone
Pedestrians Only
Friday, Saturday and Major Holidays
10PM to 3AM



NW Everett

NW Davis

NW Couch

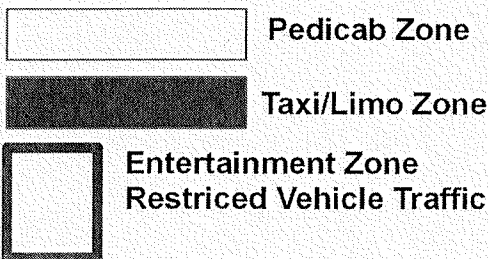
W. Burnside

NW 4TH

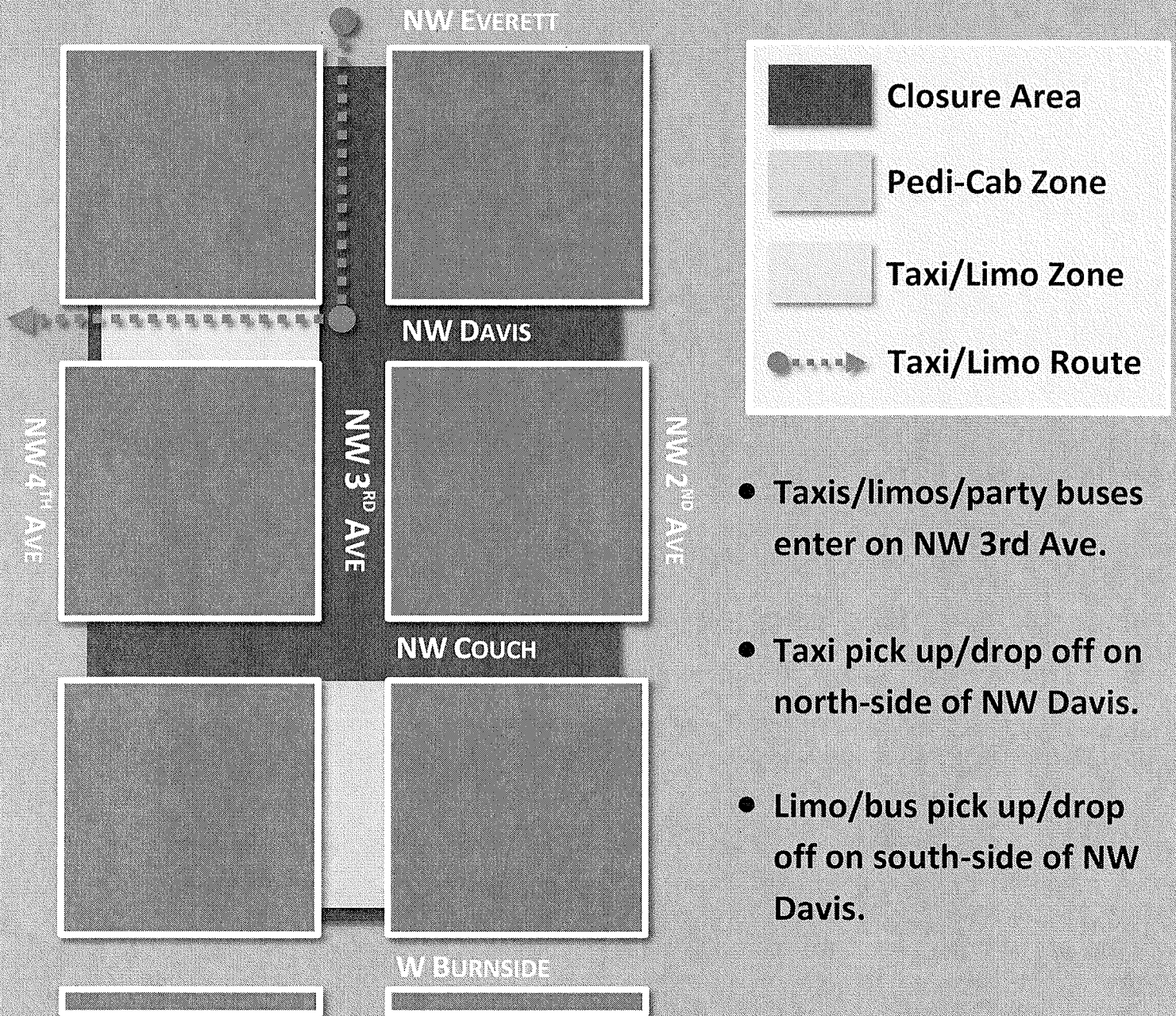
NW 3RD

NW 2ND

SW 3RD



Hired Transportation Proposal Map



Community Concerns

Street Closure Pilot Project, Winter 2012

Overview

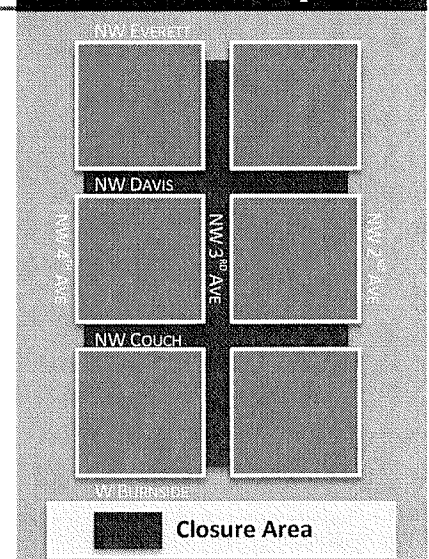
In fall, 2012, a street closure pilot project was proposed to foster public safety and establish a pedestrian-only area in Old Town/Chinatown during hours of high pedestrian traffic. Under this proposal, on Fridays, Saturdays, and major holidays* from 9:00 PM to 3:00 AM, police will close the following streets to vehicular traffic, including bicycles and skateboards:

- NW 3rd from W Burnside to NW Everett
- NW Couch from NW 2nd to NW 4th Ave
- NW Davis from NW 2nd to NW 4th Ave

Under the proposal, vehicles remaining parked on these streets during closure times will be subject to tow.

**New Year's Eve, Independence Day, St. Patrick's Day, Fat Tuesday, Memorial Day, Labor Day, Halloween*

Closure Map



Concerns

Community outreach was performed to assess impact and feasibility. Portland Police and representatives from the Office of Neighborhood Involvement met with stakeholders in the area to assess concerns, support, and to gather suggestions for changes and compromises to ensure the closures enact a net positive impact on the community. The most common concerns and proposed changes are listed below:

Concern: The 9:00 PM closure time will negatively impact daytime business.

Proposal: Many stakeholders have stated that a 10:00 PM closure time will alleviate problems posed by earlier closures. The proposal is moving forward with a 10:00 PM to 3:00 AM closure timeframe.

Concern: The already high noise level will increase and negatively affect residents.

Proposal: The removal of vehicles will reduce some noise. Additionally, officers assigned to the area have agreed to be trained with and carry decibel meters and to increase enforcement of noise ordinances in the area.

Concern: Street closures will create a "festival" atmosphere.

Proposal: No change is being made to the legal standing of the public right-of-way within the closure area. Public drinking will continue to be disallowed and the street will remain open to pedestrian traffic only.

(continued on back)

Concerns

- Concern:** The closures will disrupt traffic flow.
- Proposal:** During the pilot project, detour signs will be placed around the area to inform drivers of alternate routes. Impact will be minimal due to pre-existing restricted traffic flow in the area during proposed closure hours due to pedestrian overflow into the street, taxi queuing, and “cruising” in the area.
- Concern:** Parking spaces will be removed.
- Proposal:** Much of the area in the closure is a pre-designated no-parking zone during the proposed closure hours. The primary change is increased enforcement of these regulations.
- Concern:** Expanding pedestrian traffic will expand the clean-up required after the weekend nightlife hours.
- Proposal:** The pilot project will establish whether a long-term weekend closure project is viable. Once this has been determined, options for expanding Clean & Safe operations can be examined.
- Concern:** Disabled residents will lose street access.
- Proposal:** Police enforcing the street closures have agreed to make reasonable accommodations for access to disabled persons and necessary services.
- Concern:** Building owners and/or service providers will be unable to provide emergency resident services.
- Proposal:** Reasonable accommodations will be made to allow for emergency access.
- Concern:** Blockades will not stop drivers, bicyclists, etc. from moving or ignoring the closure.
- Proposal:** Those violating the closure will be subject to citation. Additionally, barricades will be manned by reserve officers and/or cadets.
- Concern:** The increased police presence will create a “crackdown” atmosphere.
- Proposal:** Following the Vancouver, B.C. model, officers will be encouraged to continue taking a “meet and greet” approach to policing in the area.

Information

To provide additional community feedback or concerns, or for more information regarding the street closure pilot project, please contact:

Mike Boyer
 Crime Prevention Coordinator
 Office of Neighborhood Involvement
michael.boyer@portlandoregon.gov
 503-823-5852

Patrick Owen
 Community Service Aide
 Office of Neighborhood Involvement
patrick.owen@portlandoregon.gov