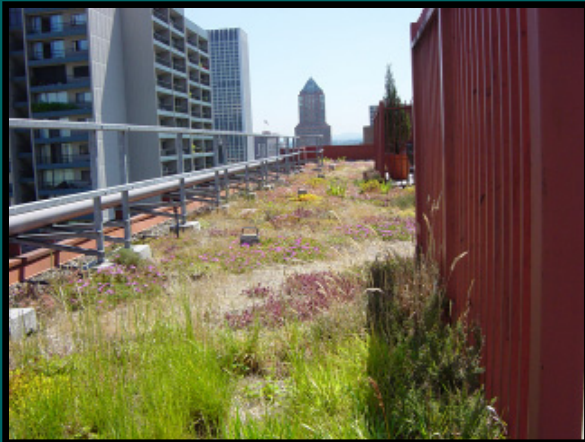




# Grey to Green

CITY COUNCIL

Initiative Update 11/3/2010



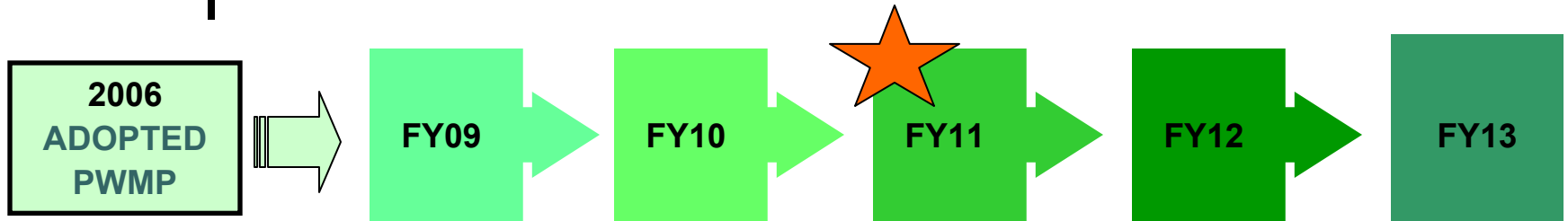
# PRESENTATION OVERVIEW

- Initiative background & where we've come
- Accomplishments: 7 “elements”
- Things to celebrate
- Challenges
- Where we're headed
- Invited testimony





# GREY TO GREEN



- Acceleration of Portland Watershed Management Plan implementation and stormwater management goals
- \$55M new (Capital and Operating), plus existing budget/staff over 5 years
- Assumptions:
  - Rely on partnership and capacity at other bureaus
  - Collaborate with community partners
  - “Ramp-up” time
  - Private development & property owner investment

# WHAT WE'VE ACCOMPLISHED



- Ramping up
- Positive results in all program areas
- Building “Civic Infrastructure”
  - Organizational partnerships
  - Community stewardship and involvement
  - Private industry development



# BUILDING CIVIC INFRASTRUCTURE *AND* HITTING TARGETS





# GREY TO GREEN

- Green Streets
- Yard and Street Trees
- Ecoroofs
- Natural Area Revegetation
- Culvert Removal
- Land Acquisition
- Invasive Plant Removal



# GREEN STREETS



Target: 920 facilities

Built: 352 facilities

★ On track to meet or exceed target





# YARD & STREET TREES



Target: 83,000 trees

Planted: 17,400 trees

★ 500% more than in 2007





# ECOROOFS

Target: 1.9 million sf (43 ac)

Built: ~¼ million sf (5.4 ac)

*100 roofs!*

★ Local ecoroof industry  
has been created



# NATURAL AREA REVEGETATION



Target: 350 acres

Planted: 300 acres

★ ODOT, OHSU Partnerships



# CULVERTS

Target: 8 upgraded

Completed: 1

★ Shows investment can have immediate results





# LAND ACQUISITION

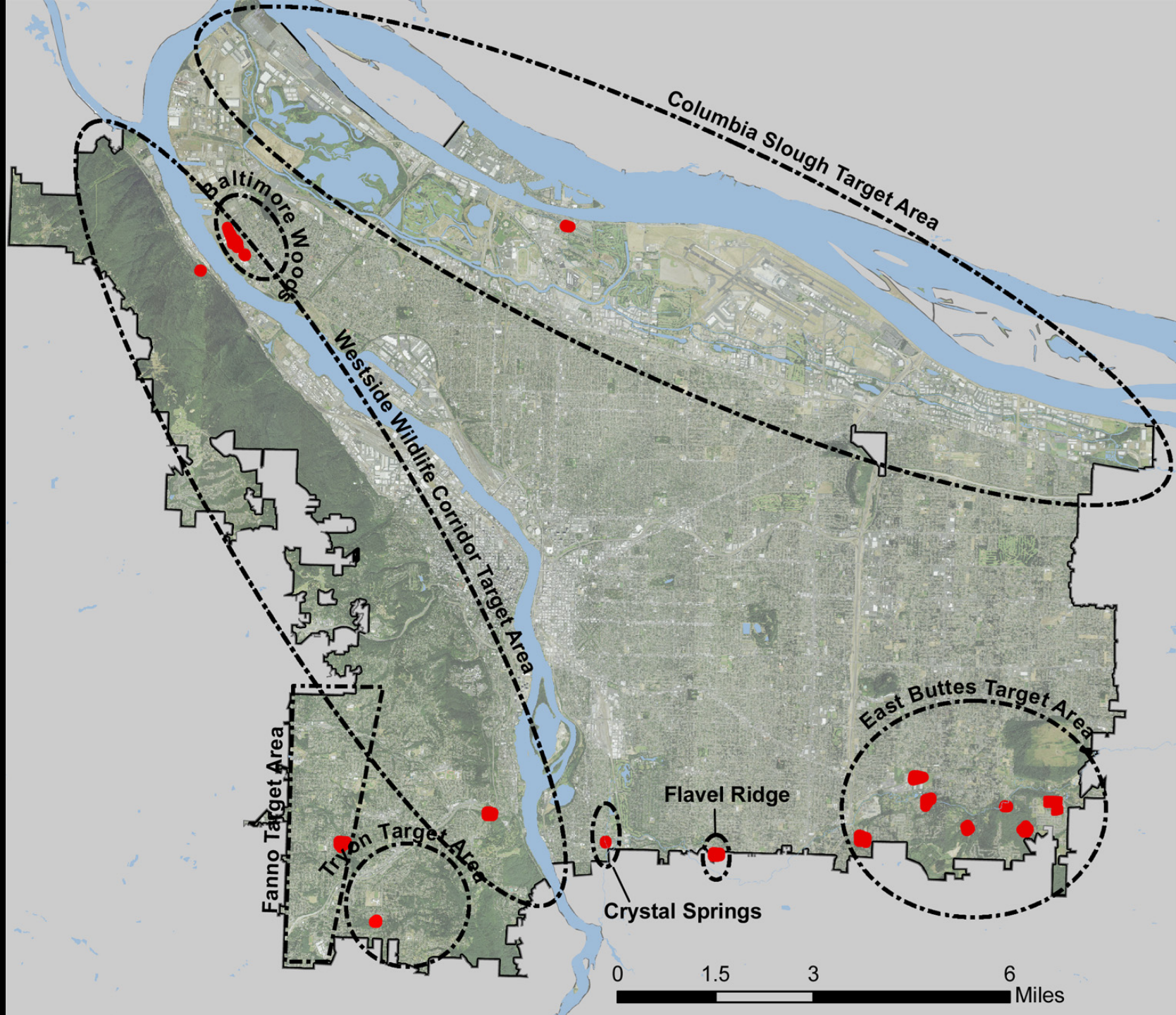
Target: 419 acres

Acquired or in Escrow: 104 acres

★ Drawing regional partners to the table  
for long-term effort









# INVASIVE PLANTS

Target: 800 acres

Early Detection Rapid  
Response treatment

Completed: 506 acres



★ Leadership  
role in invasives  
effort statewide







# WHAT WE HAVE TO CELEBRATE



- Community partnerships
- Inter-bureau & interagency partnerships
- Program ramp-up and integration
- Catalyst
- National leadership

# CHALLENGES

5-year targets: longer horizon

- Private market slow-down
- Long-term/comprehensive program development
- Partnerships and matching funds



# CHALLENGES

## Protecting Our Investment: maintenance

- Cost-effective management
- Full ecological benefits
- Community expectations





# WHERE WE'RE HEADED

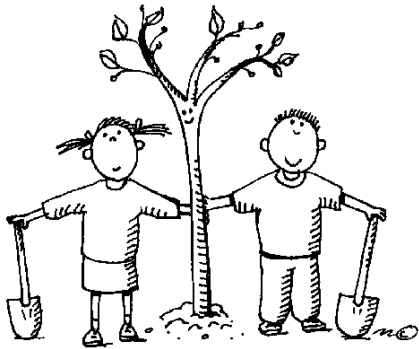
## Maintenance

- Pressure on resources
- New models



# WHERE WE'RE HEADED

Connecting the dots...



Civic Infrastructure



Monitoring



Results





# WHERE WE'RE HEADED

Integrating green infrastructure into  
asset management





# WHERE WE'RE HEADED

Expanding “civic” infrastructure





# QUESTIONS?







# PARTNERS

- Dave McAllister, PP&R City Nature
- Scott Fogarty, Friends of Trees
- Matt Clark, Johnson Creek Watershed Council
- Bob Sallinger, Audubon Society of Portland