



New Curbside Collection Service

August 10, 2011



Bureau of Planning and Sustainability
Innovation. Collaboration. Practical Solutions.



Background

Portland Recycles! Plan set a 75% recycling goal

Phase 1:



Phase 2:



- Collect food scraps with yard debris
- *Weekly* yard debris and food scraps
- *Every-other-week* garbage

Why are we doing this?



New program, established concept

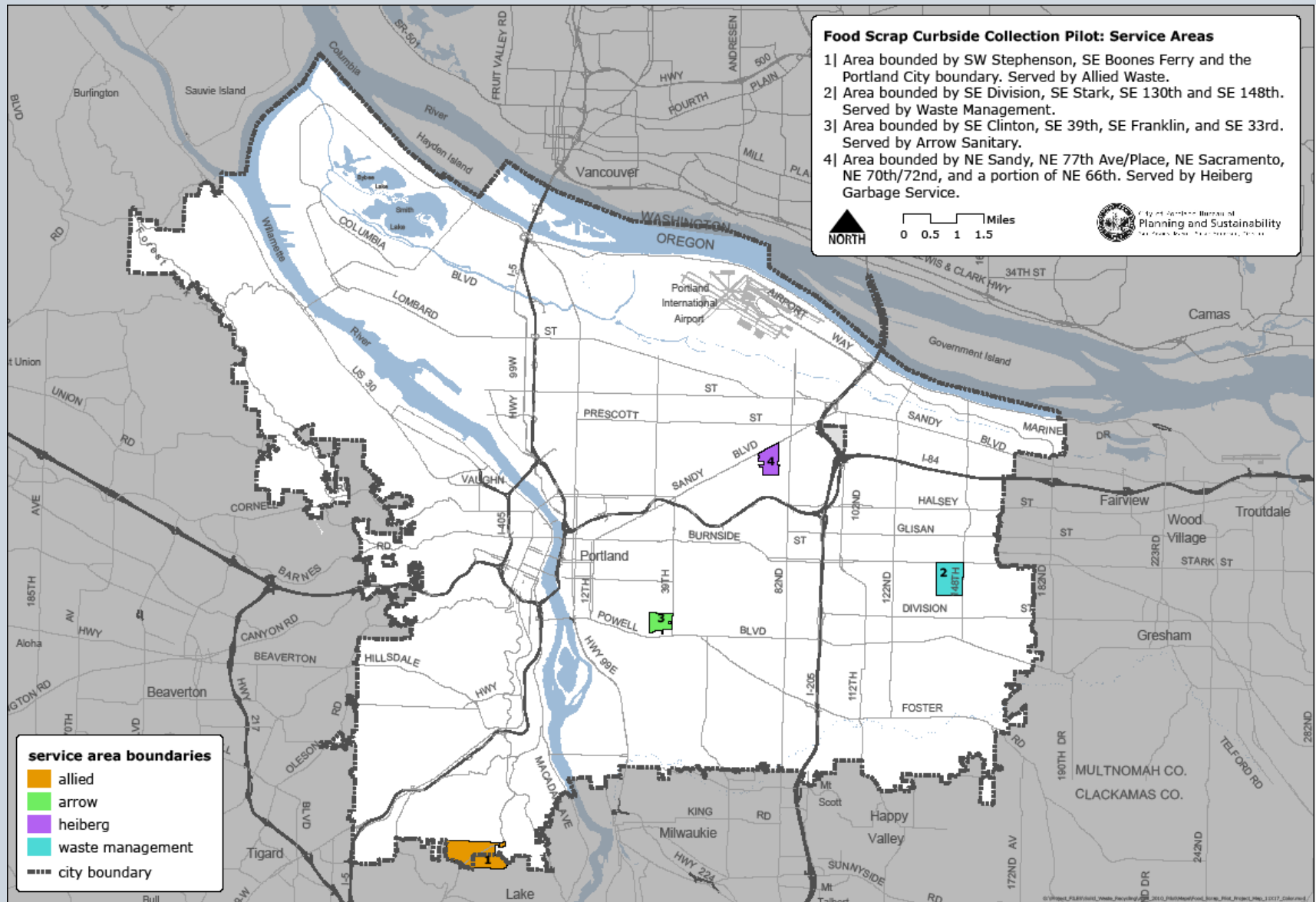


Pilot Program

- 2000 households
- *Weekly* yard debris with food scraps
- *Every-other-week* garbage



Pilot Program



Pilot Outcomes

- *Program participation:* 66% of households are collecting food scraps every day
- *Efficacy:* almost half the food scraps are being diverted from the garbage
- *Satisfaction:* 87% of pilot households are satisfied with the new program

Pilot Outcomes

- Garbage dropped 30% in pilot areas
- 40% of garbage cans were *not* full on pick-up day
- Just 7% of pilot customers switched to a bigger garbage can

Recommended Program

- Weekly yard debris with food scraps
- Weekly recycling
- Every-other-week garbage
- Starting this fall



Recommended Rates

Common Service Levels	Current Rate	Proposed Rate
20 gallon can	\$23.70	\$23.70
35 gallon cart	\$28.50	\$28.50
60 gallon cart	\$33.95	\$35.90
90 gallon cart	\$39.60	\$41.90

*Eastside rates

BE CART SMART

YOUR NEW CURBSIDE COLLECTION SYSTEM



WEEKLY



WEEKLY



**EVERY-OTHER
WEEK**

WWW.PORTLANDCOMPOSTS.COM

Other Program Options

	Service Options	Current Rate	Proposed Rate
NEW!	20 gallon cart	N/A	\$24.20
	once-a-month can	\$17.35	N/A
	once-a-month cart	\$18.65	N/A
NEW!	recycling + composting only	N/A	\$17.35
	Other Services		
	garbage extra	\$5.00	\$5.00
	on-call garbage	\$8.40	\$8.40
	call back missed pick up	\$7.95	\$7.95
	yard debris extra	\$3.00	\$3.75