



PORTLAND PARKS & RECREATION

Healthy Parks, Healthy Portland



ENVIRONMENTAL SERVICES
CITY OF PORTLAND

working for clean rivers

Natural Area Acquisition River View Forest

Summer 2011

Commissioner Nick Fish
Director Zari Santner

Commissioner Dan Saltzman
Director Dean Marriott



Sellwood Bridge



River View
Forest Property

Sellwood Bridge

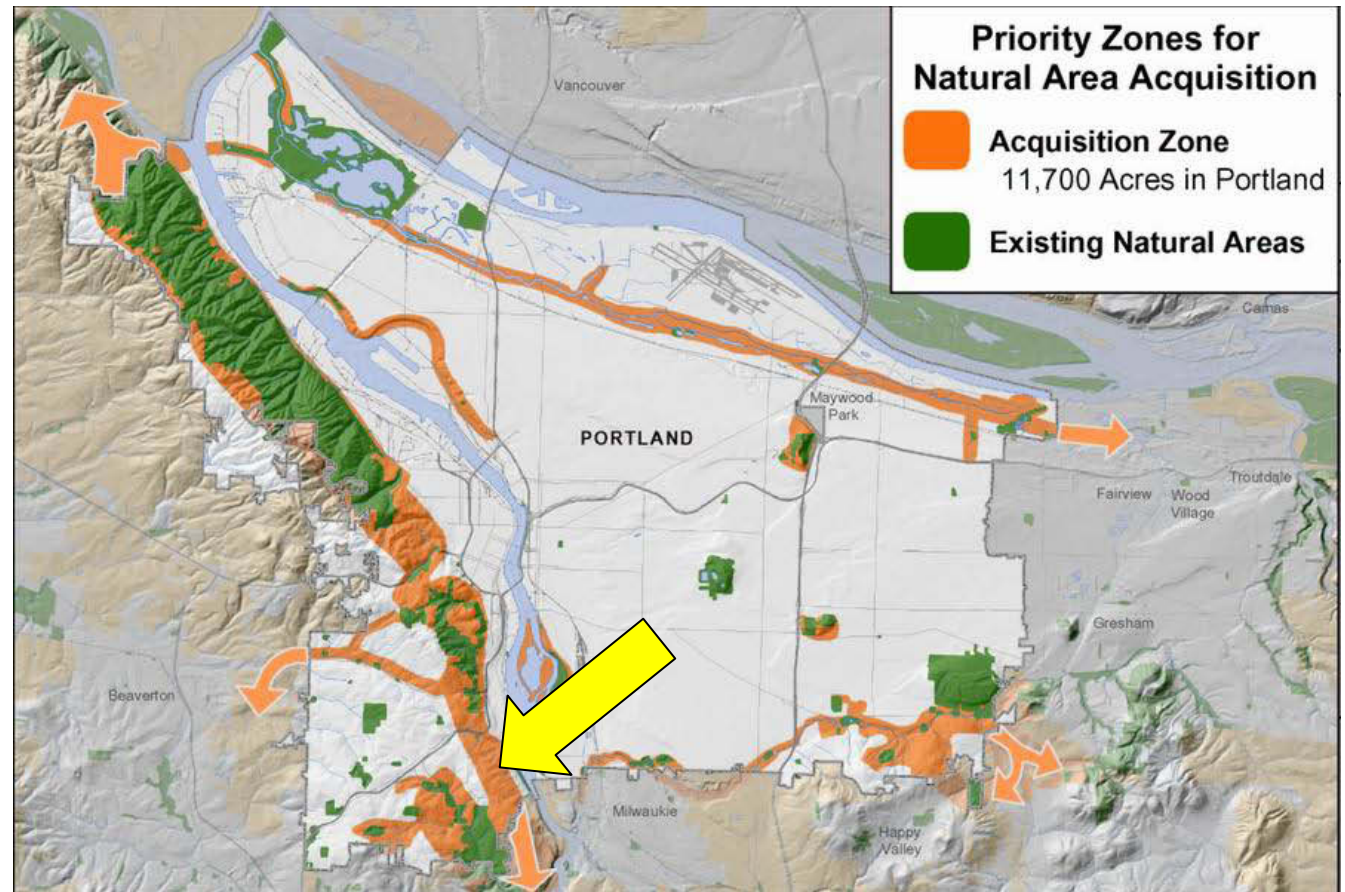
Westside Wildlife Corridor

This parcel provides a missing link in the protected corridor of wildlife habitat stretching from Forest Park to Tryon Creek State Natural Area.



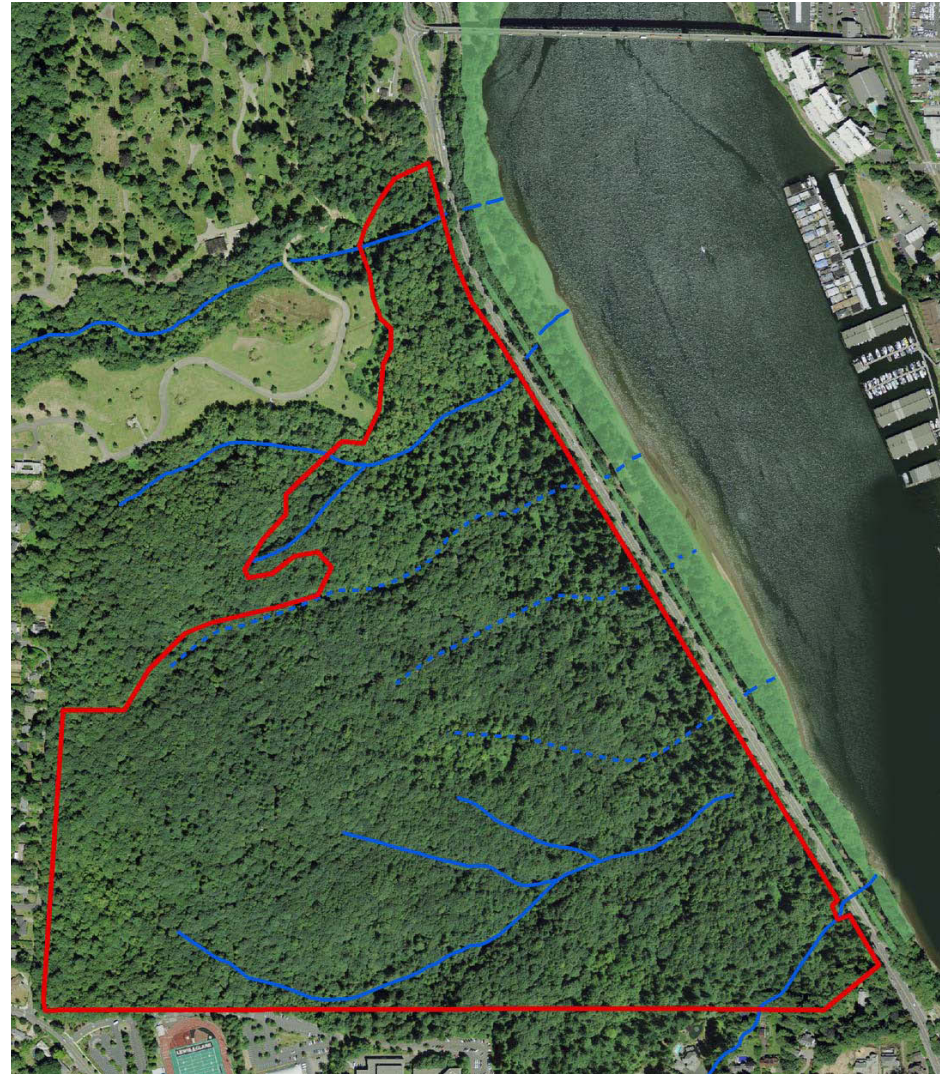
Natural Area Acquisition Strategy 2006

Highlighted
the need for
acquisition in
this location.



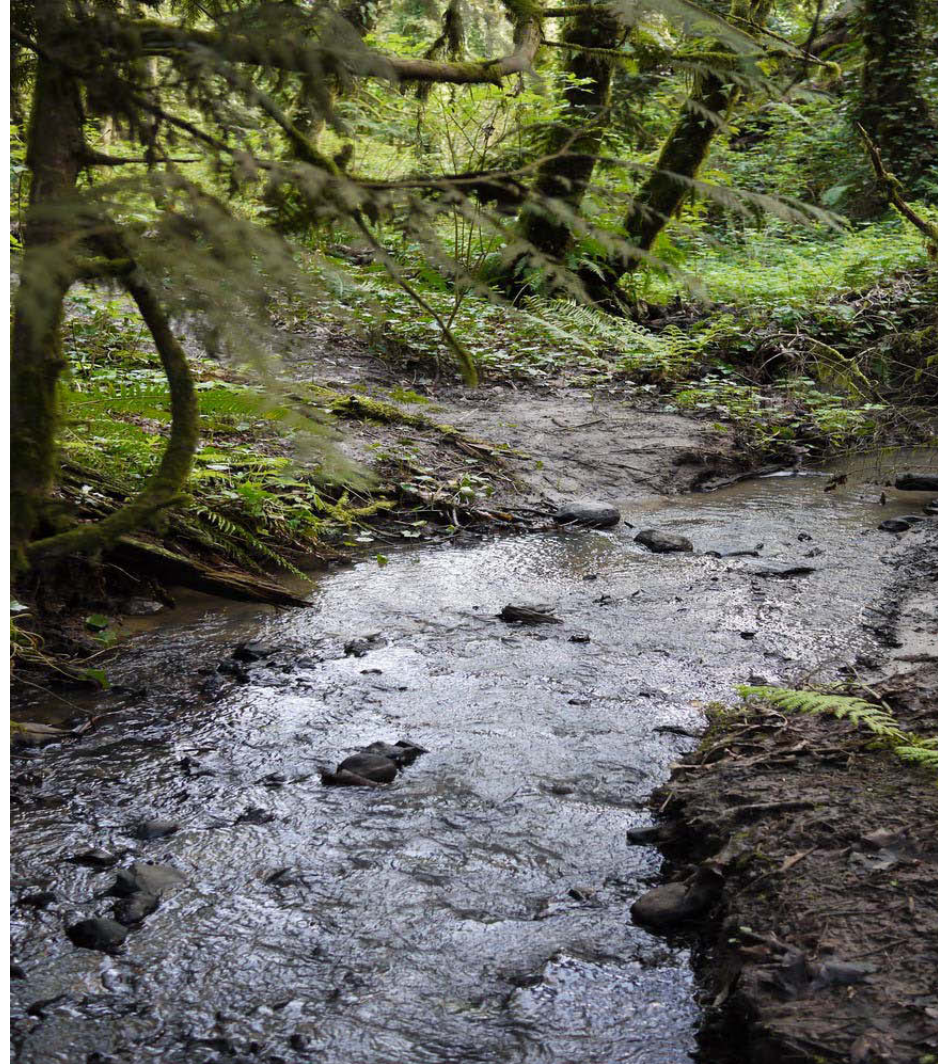
New Natural Area Park

At 146 acres, the new park will be one of the largest natural areas in the City. And contains a number of special status habitats



Habitat Diversity

- **Streams/ Ravines**
- Wetlands
- Forest



Habitat Diversity

- Streams
- **Wetlands**
- Forest



Habitat Diversity

- Streams/ Ravines
- Wetlands
- **Forest**



Protected Streams

Seven streams traverse the property before reaching the Willamette River at Powers Marine Park



Protected Streams

Shallow water
along the banks of
Powers Marine
Park offer refuge
to fish during their
journeys through
the Willamette



Community Partnership





Metro | *Making a great place*

THE
TRUST
for
PUBLIC
LAND



ENVIRONMENTAL SERVICES
CITY OF PORTLAND



PORTLAND PARKS & RECREATION

Healthy Parks, Healthy Portland

www.PortlandParks.org