



PORTLAND PARKS & RECREATION

Healthy Parks, Healthy Portland

South Waterfront Greenway

**Council
Presentation
January 2011**



South Waterfront Greenway Presentation Purpose

- ➔ Project History
- ➔ Where We Are/Actions Required
- ➔ Risks & Tradeoffs





Greenway Goals

City Council, March 2003

- Ensure a clean and healthy river for fish, wildlife and people
- Enhance liveability
- Provide a harmonious relationship between people and the natural functions of the river
- Restore the river's fish and wildlife habitat
- Enliven and beautify the district
- Provide sustaining quality, beauty and safety



South Waterfront
Greenway





SWF Greenway Milestones

- **1903** - Olmsted Report recommendations for the City of Portland include:
 - need for parks within the city
 - need for greenways along riverbanks
 - need for preservation of river access for future generations
- **1967** – Oregon legislature establishes The Willamette River Greenway Program
- **1973** - Oregon legislature passed the Willamette River Greenway Act
- **1978** – Tom McCall Waterfront Park replaces Harbor Drive
- **1983** – 40 Mile Loop Master Plan completed





SWF Greenway Milestones

- **1999** - North Macadam Urban Renewal Area Created
- **2001** – Parks Vision 2020 Adopted
- **2002** - South Waterfront Code and Guidelines Adopted
- **2003** - South Waterfront Central District Development Agreement Executed
- **2004** - South Waterfront Greenway Development Plan Design Component Adopted
- **2006** - Central District Greenway Project funding established
- **2007** - Central District Greenway Project enters formal design
- **2008** –Greenway permit process starts





Who's Involved?

- Portland Parks & Recreation
- Portland Development Commission
- Bureau of Environmental Services
- Office of Healthy Working Rivers
- Bureaus of Planning & Sustainability;
Development Services
- Property Owners
- Neighbors, Advocacy Groups, other agencies



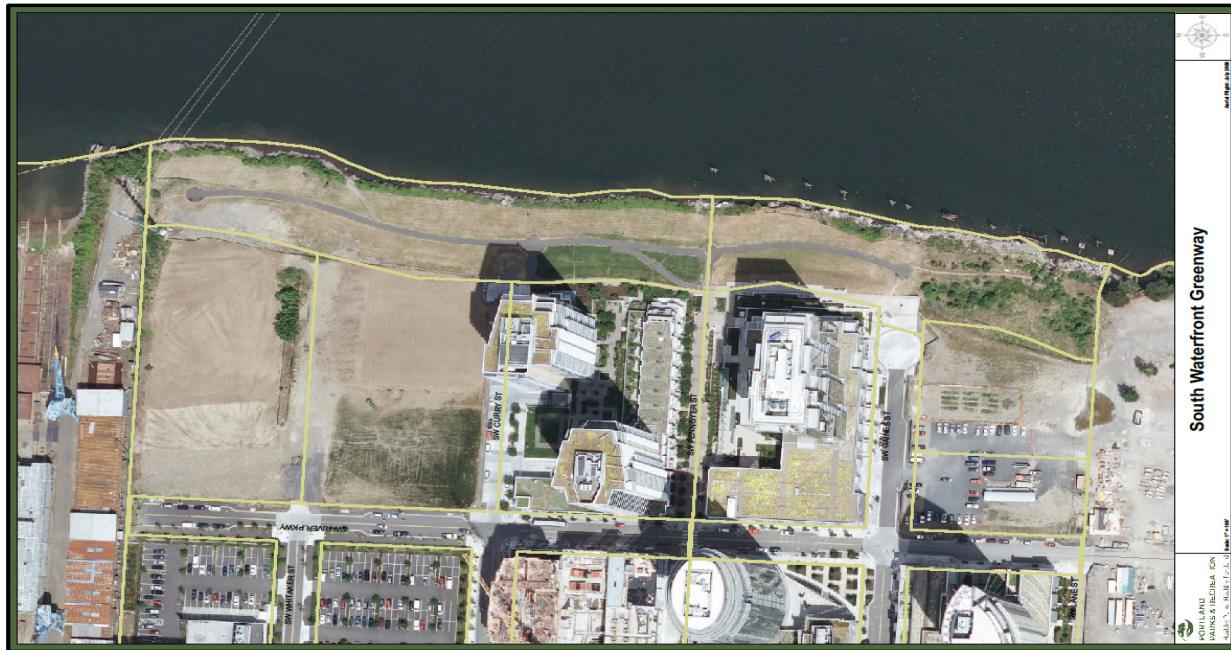


PORTLAND PARKS & RECREATION

Healthy Parks, Healthy Portland

SWF Greenway Challenges

Property Transfer





PORTLAND PARKS & RECREATION

Healthy Parks, Healthy Portland

SWF Greenway Challenges

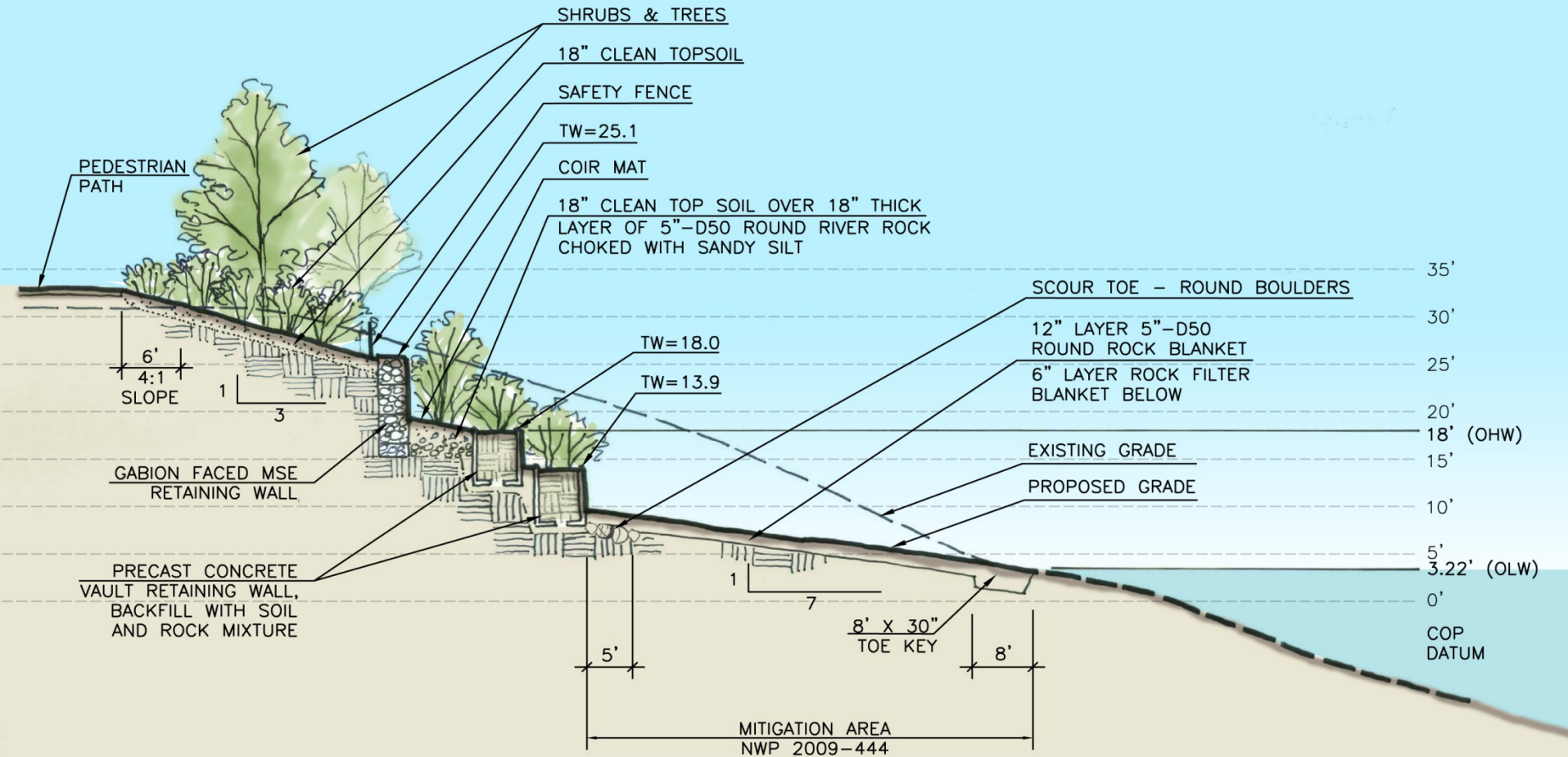
Design/Permitting



Greenway: Design / Permitting Challenges



Greenway: Design / Permitting Challenges



PROPOSED CONDITIONS
STATION 5+50 (SECTION)

NOTE:
VEGETATION SHOWN
AT MATURE SIZE.



SWF Greenway Challenges

Budget

- Bank and habitat work added cost
- TriMet LRT Bridge Impacts
- Partnership opportunity



SWF Greenway Challenges

Budget

• <u>Estimated Expenses</u>	
Construction	\$4,811,962
Consultants	\$1,495,110
Staff, overhead and miscellaneous	\$ 643,771
Permitting	\$ 164,418
Environmental clean up	\$ 960,000
Total	\$8,075,261
• <u>Resources</u>	
TIF	\$4,000,000
Parks SDC	\$2,000,000
TriMet	\$1,000,000
Reimbursement from RCI/NMI	\$ 200,000
Caruthers Contingency (TIF)	\$ 250,000-\$300,000
BES	\$ 188,000
Value engineer and other economization	\$ 387,261-437,261
Total	\$8,075,261



SWF Greenway Solutions

- **Fall 2009 - Spring 2010** – Alternatives Analysis
- **Feb 2010** – SWF Greenway Design Guidelines adopted
- **May 2010** – Tri Met Discussions Begin
- **June to September 2010** – Revised design
- **October 2010** – Re-submitted Joint Permit Application
- **October 2010** – Signed agreement on property transfer
- **October 2010** – Signed MOU with TriMet



SWF Greenway Upcoming Actions

- **Jan 2011** – Council presentation, ordinances
- **Oct 2010 – June 2011** – Permit Review
- **March 2011** – *Binding IGA with Tri Met*
- **June 2011** – *Select CM/GC*
- **June-July 2011** – Permit Approval, Refine Design
- **August 2011** – *Finalize design, balance budget*
- **October 2011** – *Report on Guaranteed Maximum Price, O&M estimate*
- **Nov 2011 – Jan 2012** – Building Permit
- **Feb 2011** – Finalize Construction Plans
- **March –May 2012** – Finalize Contract
- **May – December 2012** – *Construction (in-water work period Jul-Oct)*



Council Action Requested

- Exemption to Low Bid Requirement
- Amend Contract with Designers



Project Risks

- Unforeseen site conditions
 - Impact on cost
 - Impact on design
 - Impact on Tri Met mitigation
- Durability of design
 - Capital investment
 - Maintenance investment
- TriMet Funding
 - Requires successfully negotiating IGA



What We Can Achieve

- An Exemplary Greenway
- Integration of Multiple Goals









Additional Context

- Lisa Abuaf, PDC
- Kaitlin Lovell, BES

SPECIAL THANKS TO:

- Liz Moorhead and Allison Rouse
 - Lisa Abuaf, Irene Bowers, Dave Obern
 - Kaitlin Lovell, Mike Rosen, John O'Donovan
 - Ann Beier, Rick Bastasch
 - Troy Doss
 - Kara Fioravante
 - Harry Auerbach, Nanci Klinger, Jim Van Dyke
 - Dave Unsworth
 - Dike Dame, Trevor Rowe
 - Neighborhood and Homeowner Associations
 - North Macadam URAC
 - SWF Central District Greenway CAC
 - Mike Zilis, Laura Herbon, Chelsea McCann et al
- PP&R
PDC
BES
OHWR
BPS
BDS
City Attorney's Office
Tri Met
NMI, RCI
South Portland, SWF
Walker Macy & team



PORTLAND PARKS & RECREATION

Healthy Parks, Healthy Portland

www.PortlandParks.org



Conclusion

- Questions
- Feedback
- Discussion