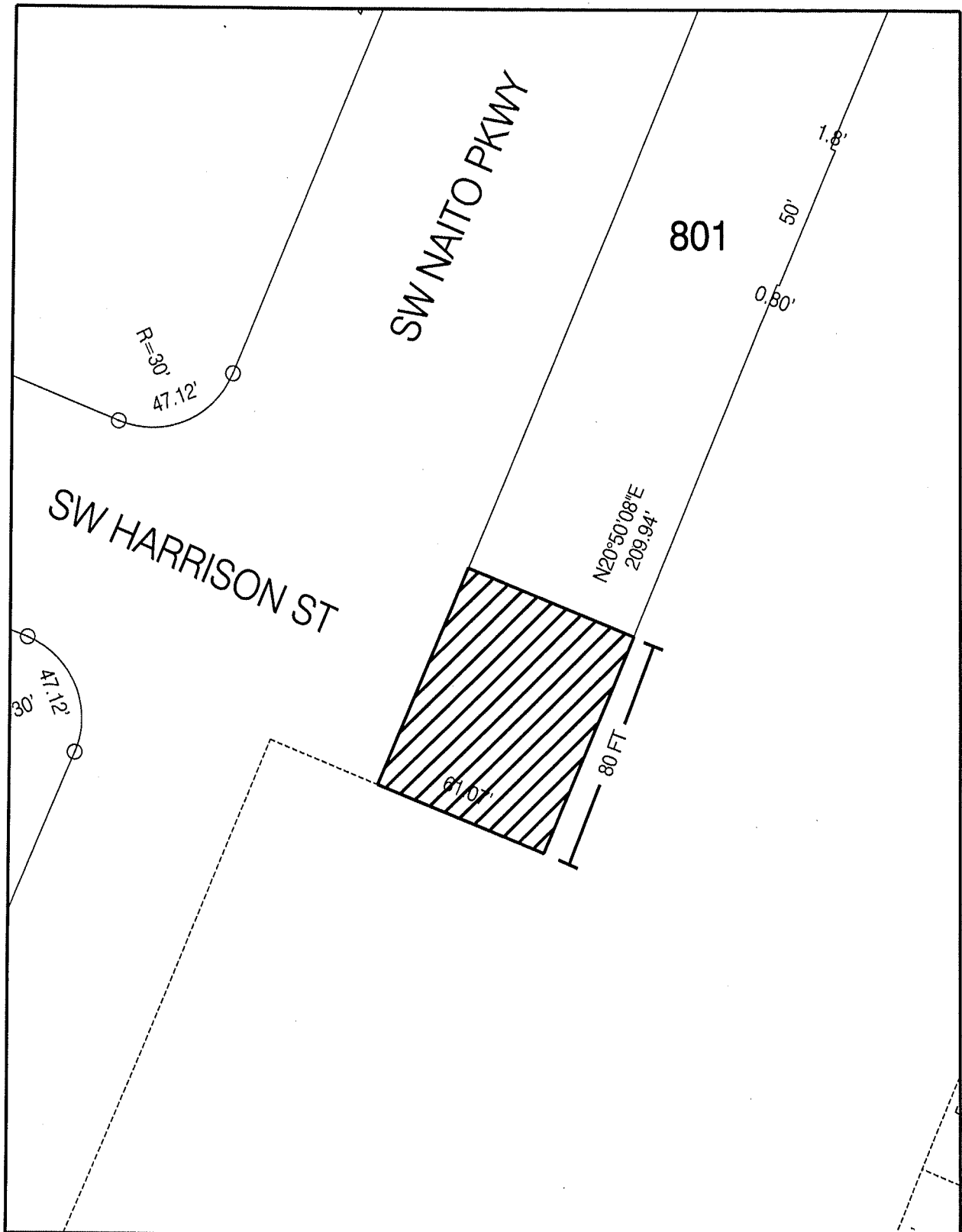


# Exhibit A

184134



## SW HARRISON STREET EAST OF SW NAITO PARKWAY

Legal: A portion of Block J, "South Auditorium Addition"

Grantor: City of Portland

R/W: 7221    ¼ Section: 3229    Section: 1S1E03CA



Designate and Assign Area



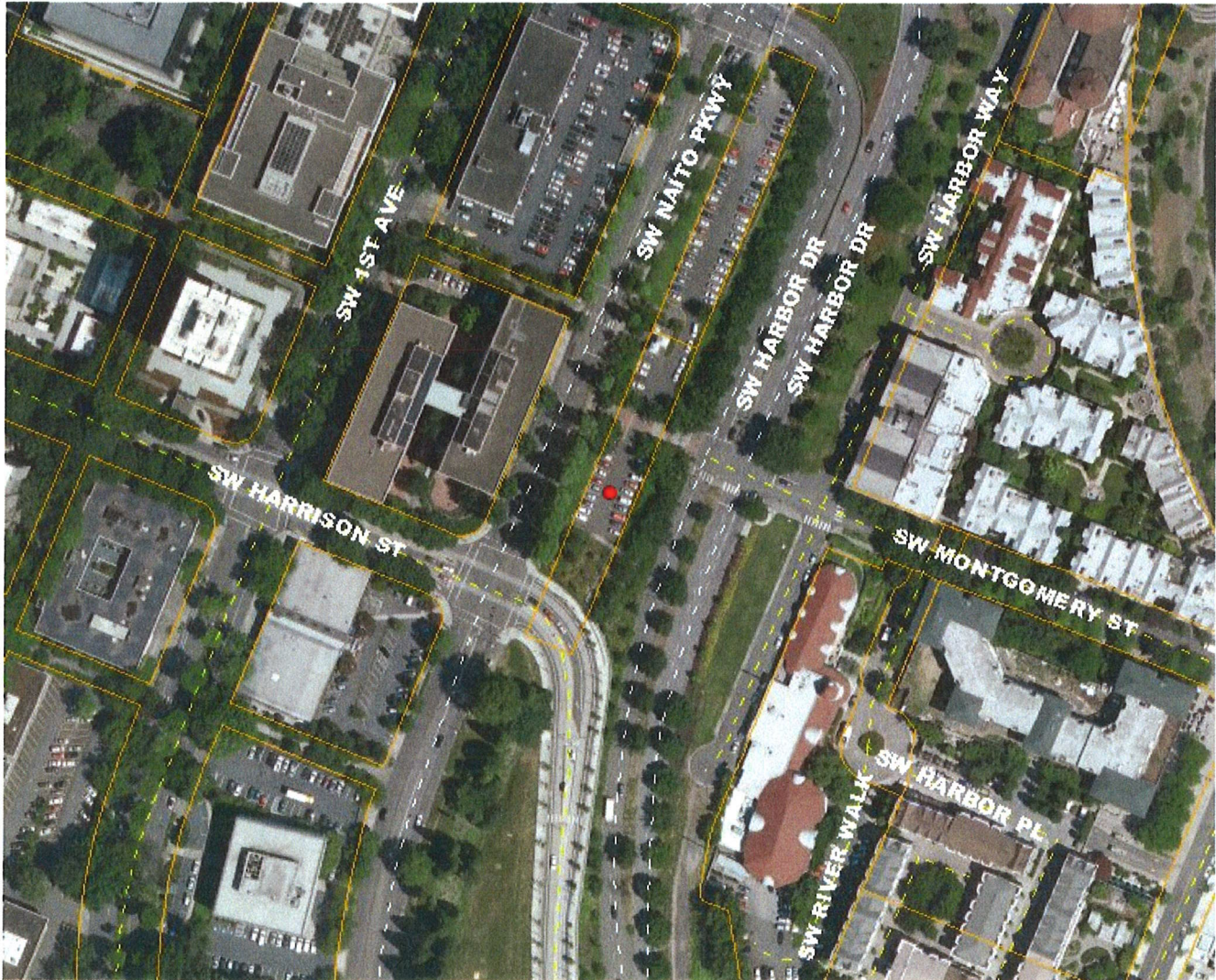
Scale: 1" = 50'

## PortlandMaps

[New Search](#) | [Mapping](#) | [Advanced](#) | [Google Earth](#) | [Help](#) | [PortlandOnline](#)**1720 SW NAITO PKWY - DOWNTOWN - PORTLAND**[Explorer](#) | [Property](#) | **Maps** | [Projects](#) | [Crime](#) | [Census](#) | [Environmental](#) | [Transportation](#)[Summary](#) | [Businesses](#) | [Elevation](#) | [Fire](#) | [Hazard](#) | **Photo** | [Property](#) | [Tax Map](#) | [UGB](#) | [Walkability](#) | [Zoning](#) | [Zip Code](#)**Aerial Photo**

2009 / '08 / '07 / '06 / '05 / '04 / '03 / '02 / '01

6" / 2' / 4' / 10' / 20'

Streets: **On** Lots: **On** Dot: **On**

0 | 200 FT

City of Portland, Corporate GIS

9/16/2010

THE GIS APPLICATIONS ACCESSED THROUGH THIS WEB SITE PROVIDE A VISUAL DISPLAY OF DATA FOR YOUR CONVENIENCE. EVERY REASONABLE EFFORT HAS BEEN MADE TO ASSURE THE ACCURACY OF THE MAPS AND ASSOCIATED DATA. THE CITY OF PORTLAND MAKES NO WARRANTY, REPRESENTATION OR GUARANTEE AS TO THE CONTENT, SEQUENCE, ACCURACY, TIMELINESS OR COMPLETENESS OF ANY OF THE DATA PROVIDED HEREIN. THE USER OF THESE APPLICATIONS SHOULD NOT RELY ON THE DATA PROVIDED HEREIN FOR ANY REASON. THE CITY OF PORTLAND EXPLICITLY DISCLAIMS ANY REPRESENTATIONS AND WARRANTIES, INCLUDING, WITHOUT LIMITATION, THE IMPLIED WARRANTIES OF MERCHANTABILITY AND FITNESS FOR A PARTICULAR PURPOSE. THE CITY OF PORTLAND SHALL ASSUME NO LIABILITY FOR ANY ERRORS, OMISSIONS, OR INACCURACIES IN THE INFORMATION PROVIDED REGARDLESS OF HOW CAUSED. THE CITY OF PORTLAND SHALL ASSUME NO LIABILITY FOR ANY DECISIONS MADE OR ACTIONS TAKEN OR NOT TAKEN BY THE USER OF THE APPLICATIONS IN RELIANCE UPON ANY INFORMATION OR DATA FURNISHED HEREUNDER. FOR UPDATED INFORMATION ABOUT THE MAP DATA ON PORTLANDMAPS PLEASE REFER TO [CITY'S METADATA](#). FOR QUESTIONS ABOUT ASSESSMENT INFORMATION PLEASE CONTACT THE COUNTY ASSESSORS OFFICE IN YOUR COUNTY.

[Address](#) | [Mapping](#) | [Advanced](#) | [Google Earth](#) | [Help](#) | [About](#)PortlandMaps © 2010 [City of Portland, Oregon](#)