

# ZIDELL YARDS | SLIPWAY

## DESIGN ADVICE REQUEST

OCTOBER 26, 2017

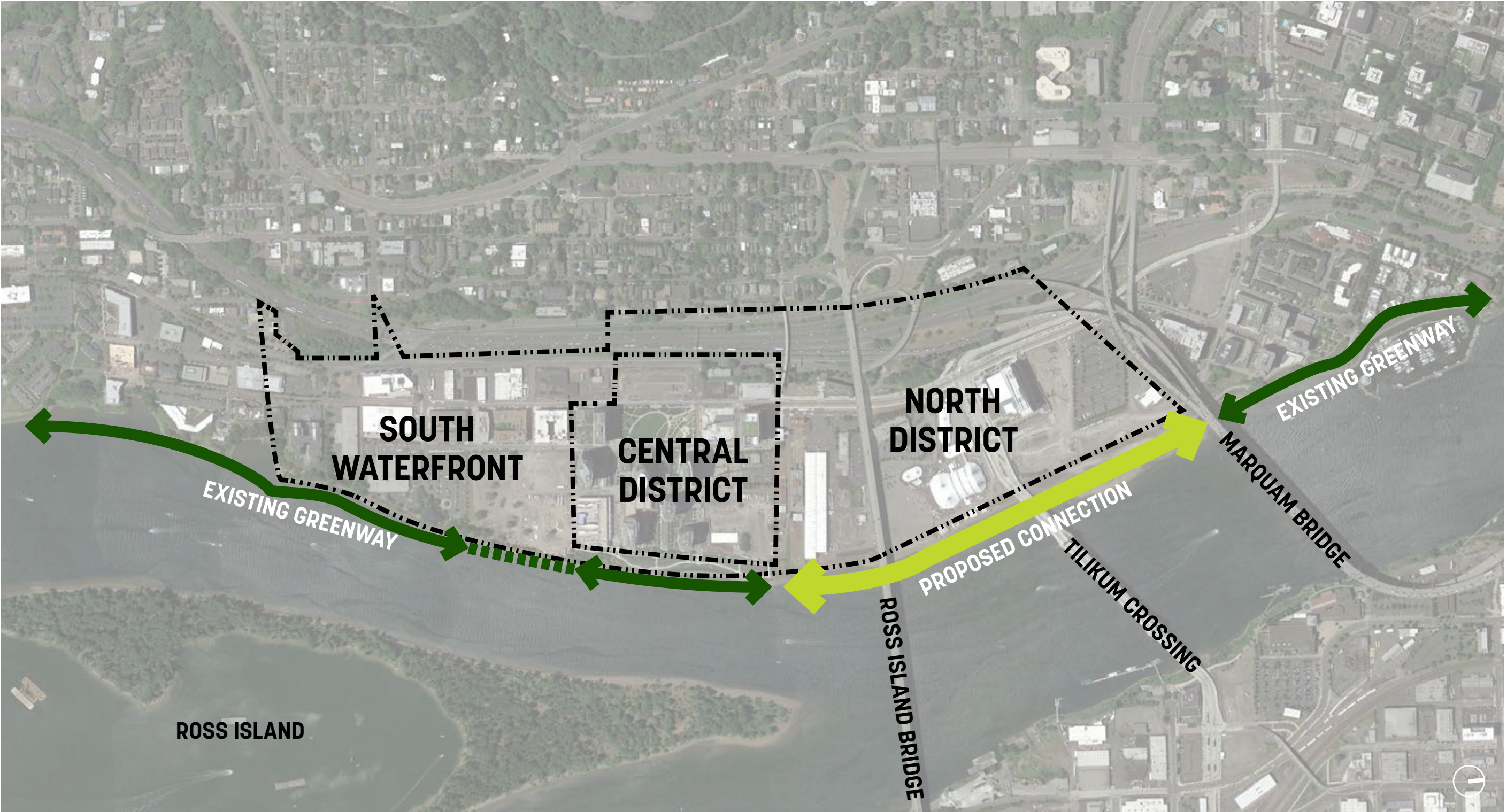


# PROJECT LOCATION SOUTH WATERFRONT GREENWAY NORTH REACH



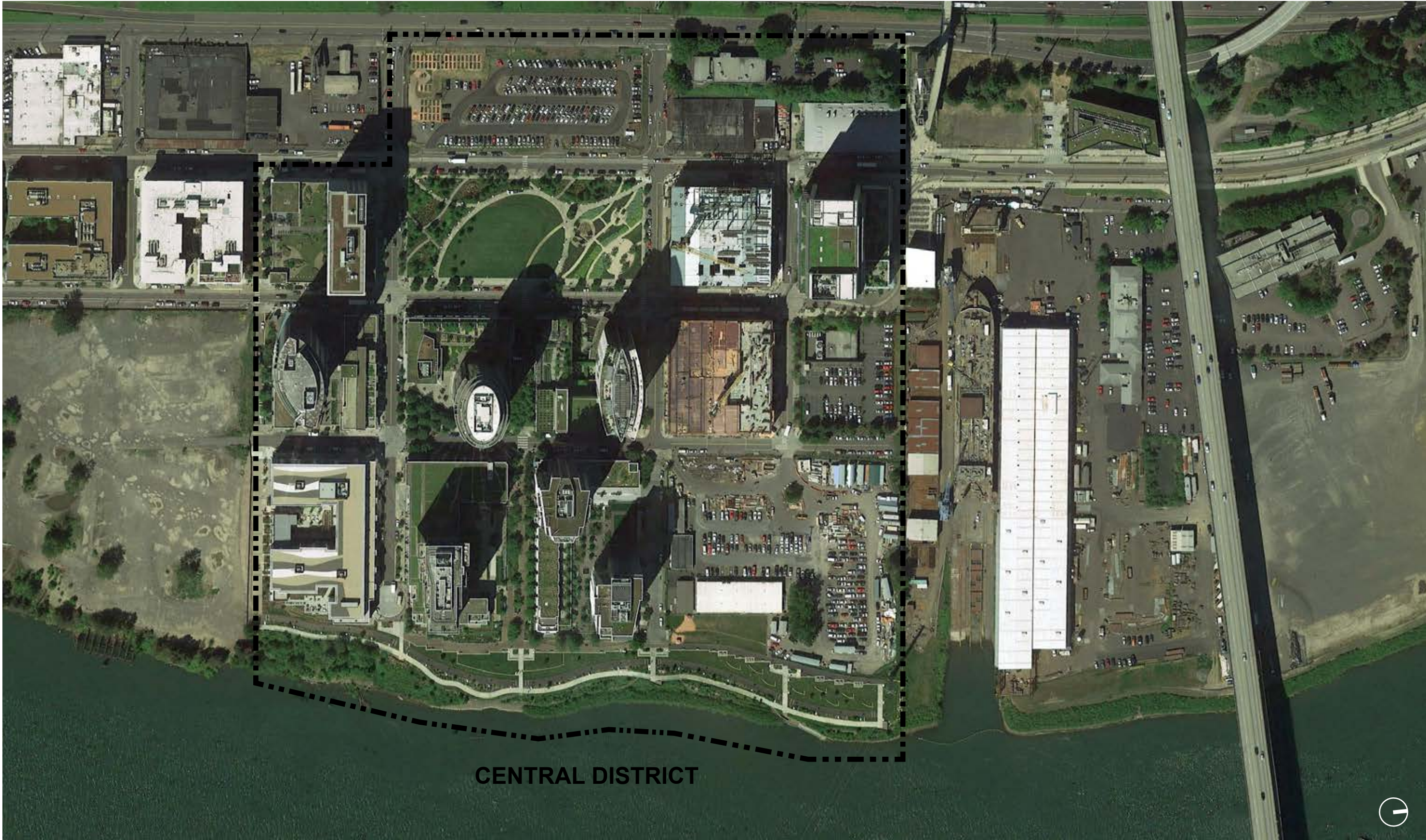


**SOUTH WATERFRONT CONTEXT**





**PROJECT LOCATION** SOUTH WATERFRONT GREENWAY PLAN UPDATE - JUNE 2017 DAR





**PROJECT LOCATION** SOUTH WATERFRONT GREENWAY PLAN UPDATE - JUNE 2017 DAR



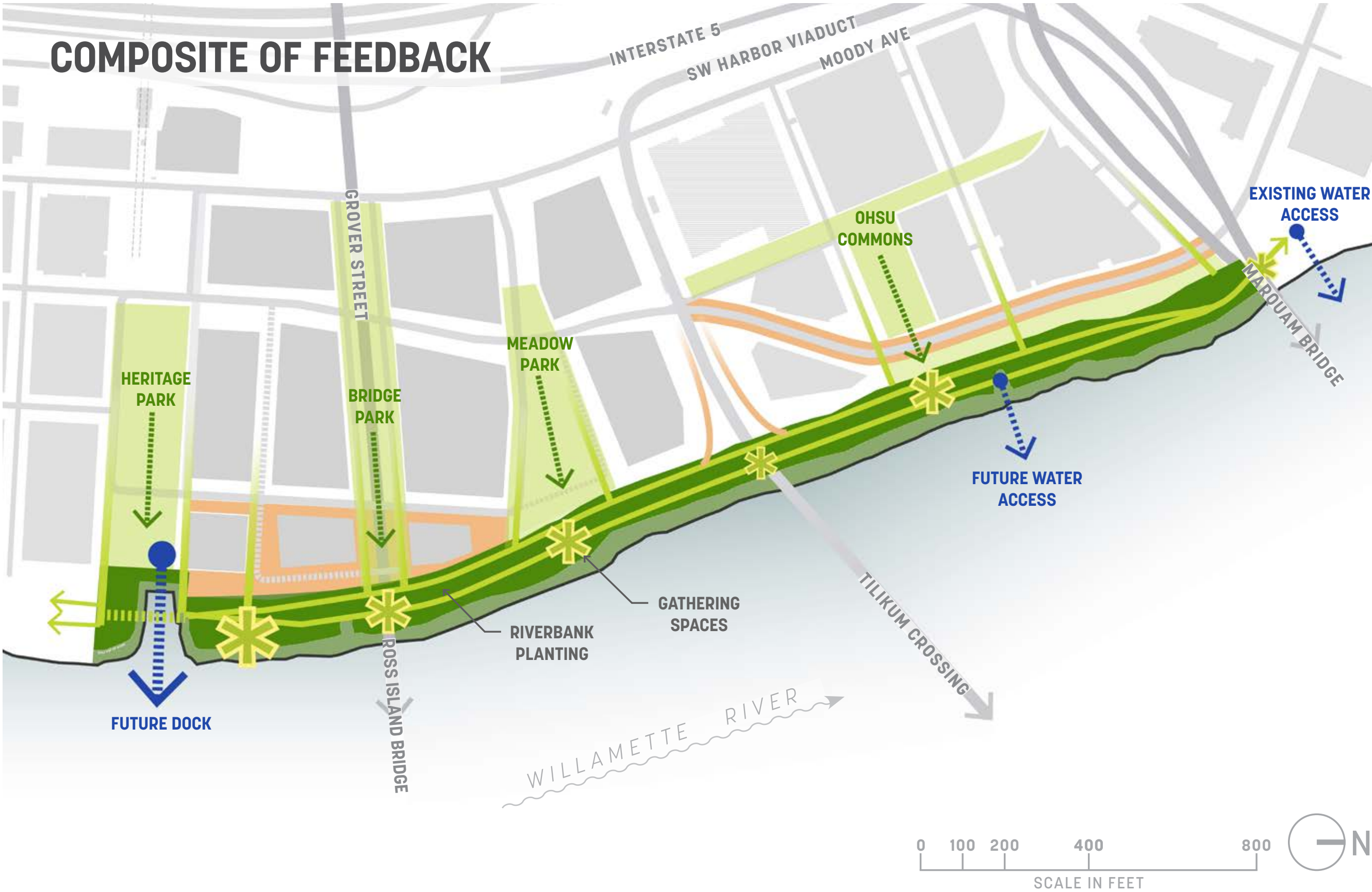


# PROJECT LOCATION

ZIDELL YARDS - 2017 MASTER PLAN









PROJECT VALUES

- 2004
1. Ensure a clean and healthy river for fish, wildlife, and people

2.Enhance livability, through multi-modal transportation, safety and recreation opportunities

3.Encourage a harmonious relationship between the river’s natural functions and people

4.Restore the river’s fish and wildlife habitat

5.Enliven and beautify the district through high-quality design
- 2017
- 6.Incorporate City equity strategies

7. Ensure the plan is practical, feasible and implementable

8.Be a regional amenity with unique river access

9.Provide opportunities for education, interpretation, art and history



# PROJECT LOCATION

SOUTH WATERFRONT GREENWAY PLAN UPDATE - JUNE 2017 DAR



## SOUTH WATERFRONT DESIGN GUIDELINES

- ✓ **A1-1** Develop River Edge Variety
- ✓ **A5-1** Consider South Waterfront's History and Special Qualities
- ✓ **C4-1** Develop Complementary Structured Parking

## CENTRAL CITY DESIGN GUIDELINES

### *PORTLAND PERSONALITY*

- ✓ **A3** Respect the Portland Block Structures
- ✓ **A5** Enhance, Embellish, and Identify Areas
- ✓ **A7** Establish and Maintain a Sense of Urban Enclosure
- ✓ **A8** Contribute to a Vibrant Streetscape

### *PEDESTRIAN EMPHASIS*

- ✓ **B4** Provide Stopping and Viewing Places
- ✓ **B5** Make Plazas, Parks and Open Space Successful

### *PROJECT DESIGN*

- ✓ **C6** Develop Transitions Between Buildings & Public Spaces
- ✓ **C7** Design Corners that Build Active Intersections







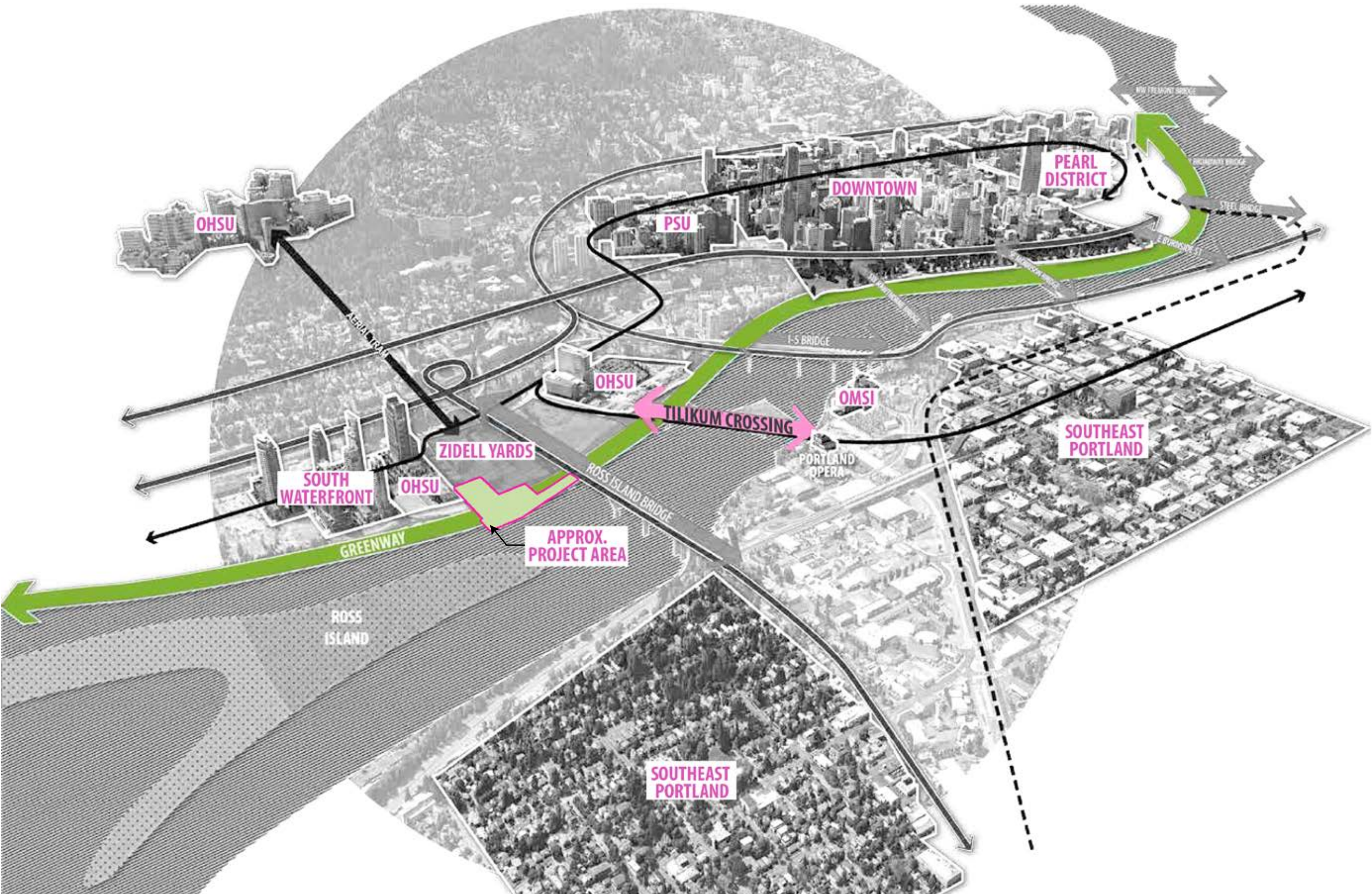
# ZIDELL YARDS | SLIPWAY

## DESIGN ADVICE REQUEST

OCTOBER 26, 2017



PROJECT LOCATION SOUTH WATERFRONT - 2017 ZIDELL YARDS MASTER PLAN





# PROJECT LOCATION

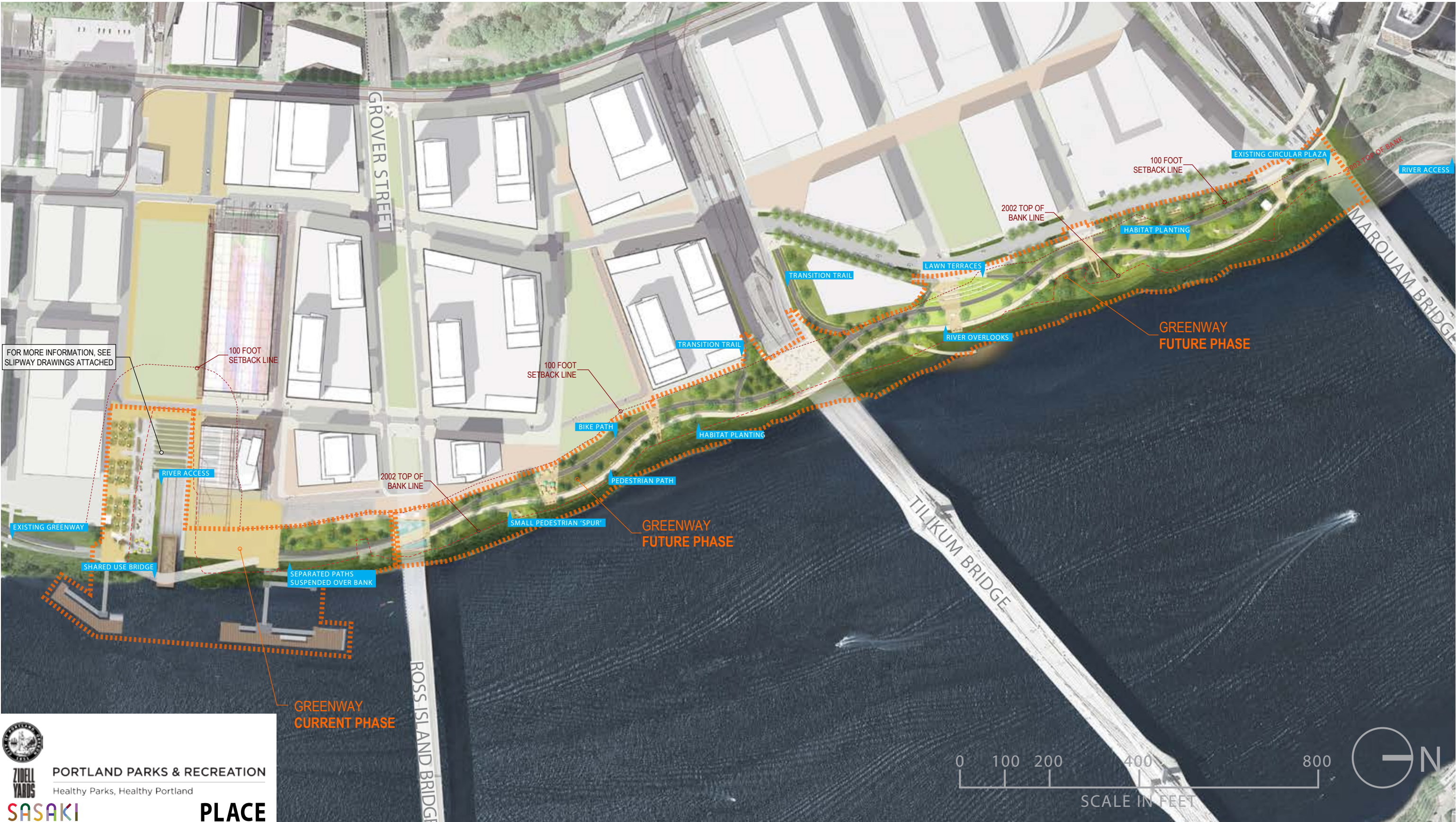
ZIDELL YARDS - 2017 MASTER PLAN - PROJECTED OPENING DATES





# PROJECT LOCATION SOUTH WATERFRONT GREENWAY NORTH REACH

EA17-244961DA





# PROJECT LOCATION

ZIDELL YARDS - 2017 MASTER PLAN

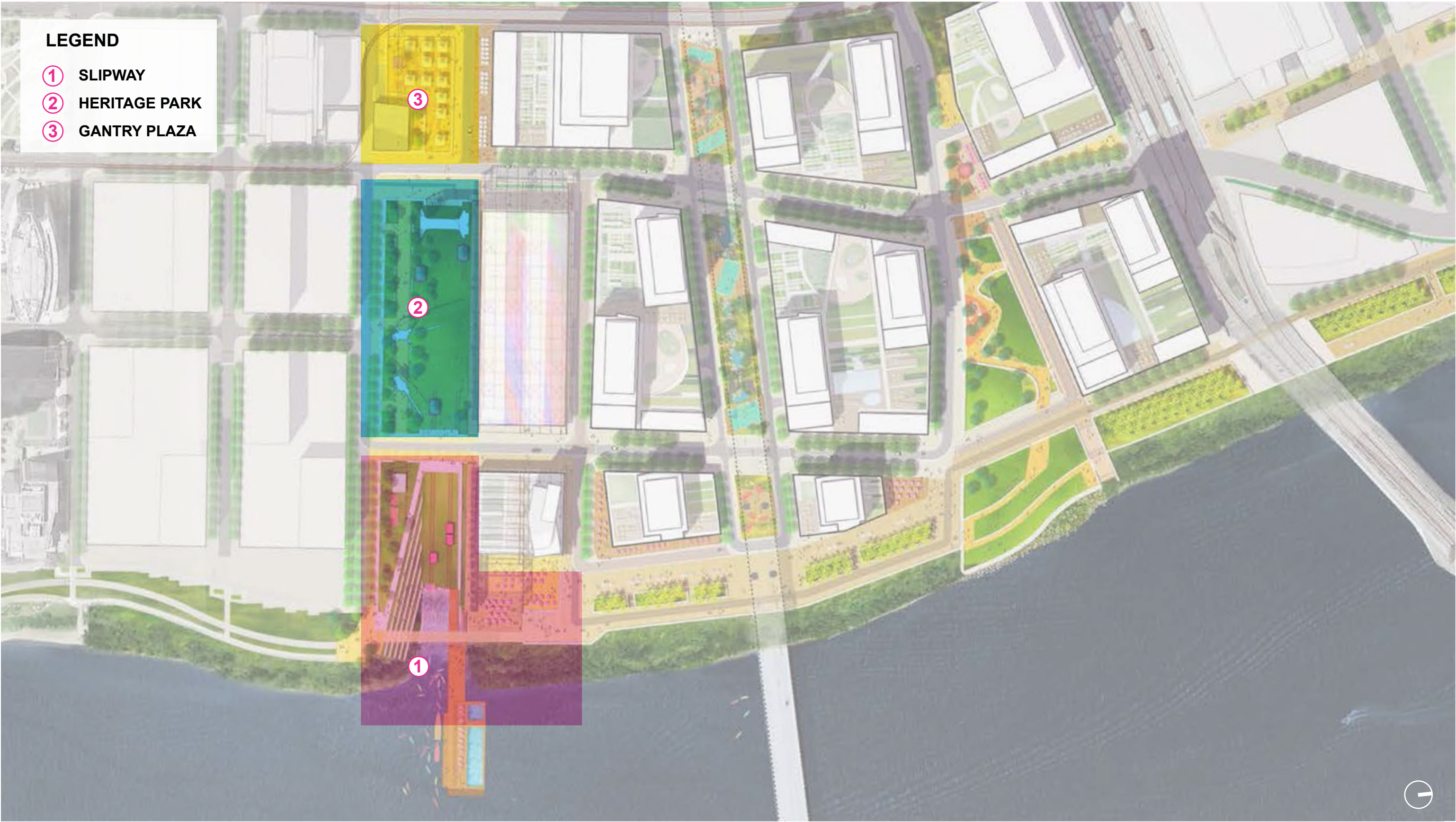




# PROJECT LOCATION

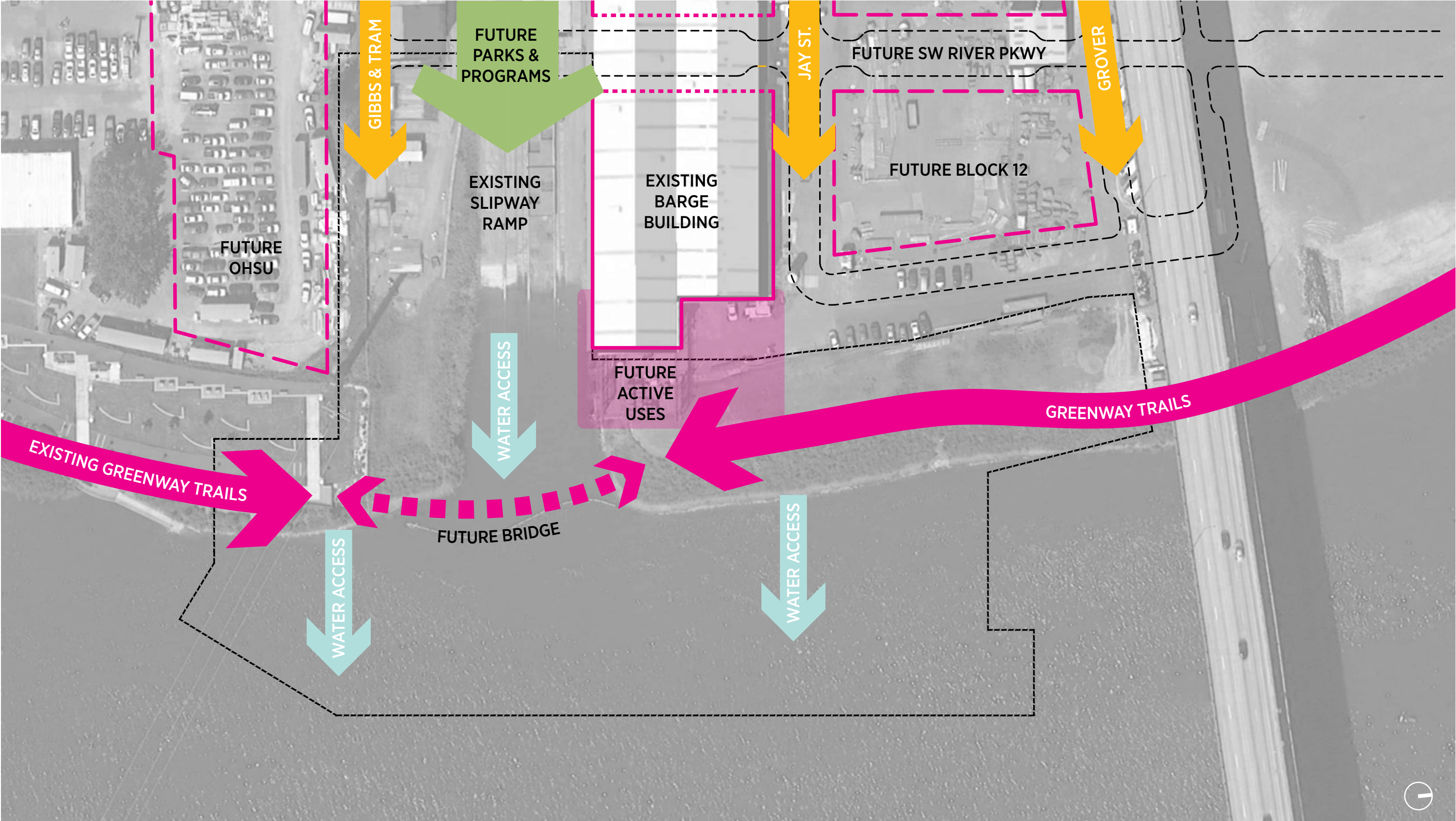
ZIDELL YARDS - PARK SEQUENCE

EA17-244961DA





# PROJECT BOUNDARY SITE FORCES





# PROJECT LOCATION

EXISTING SLIPWAY SITE PHOTOS

EA17-244961DA





# DESIGN ADVICE REQUEST

## KEY DISCUSSION POINTS

EA17-244961DA

- Connections
- Character of the plazas
- Water access: docks & structures
- Active uses and features
- Bridge purpose and character
- Ecological concepts



**wa·ter·line**

/ˈwôdərˌlīn, ˈwädərˌlīn/

*noun*

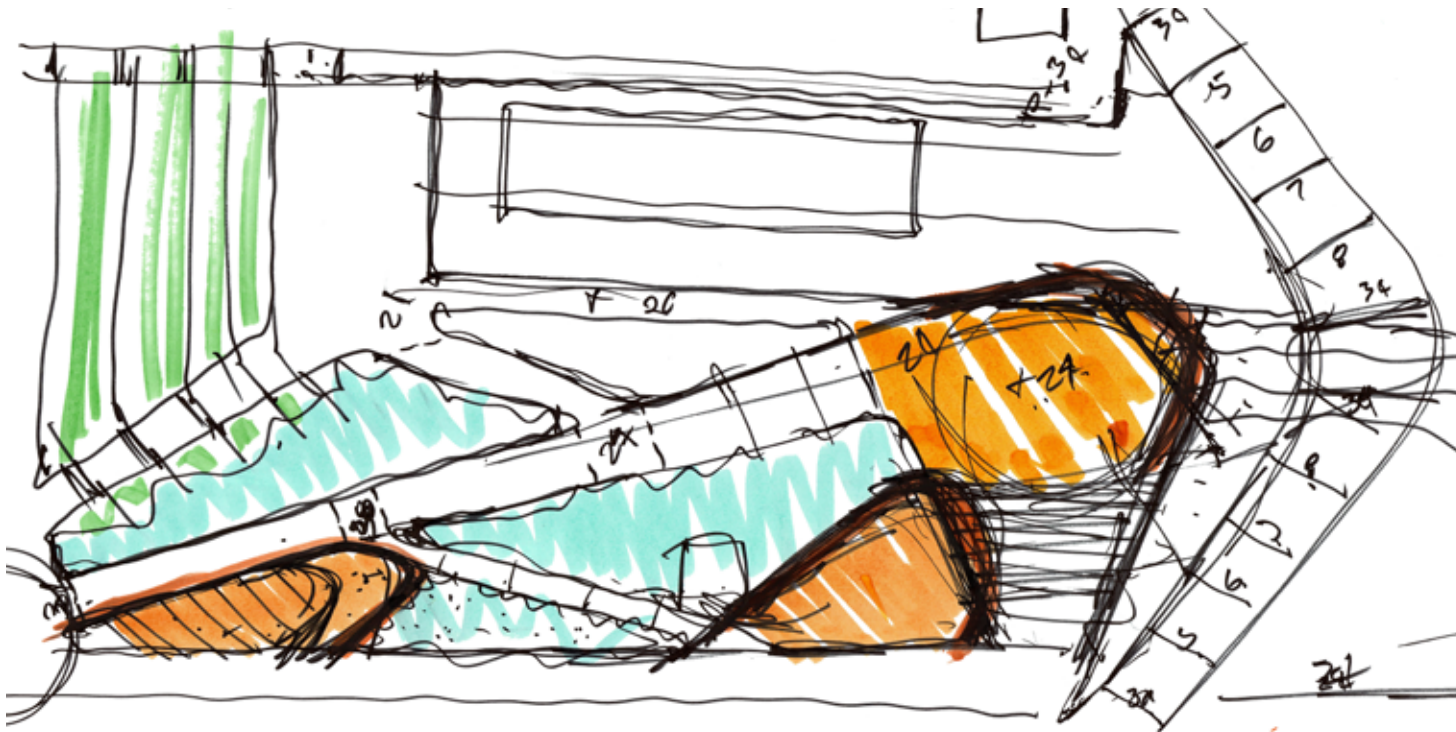
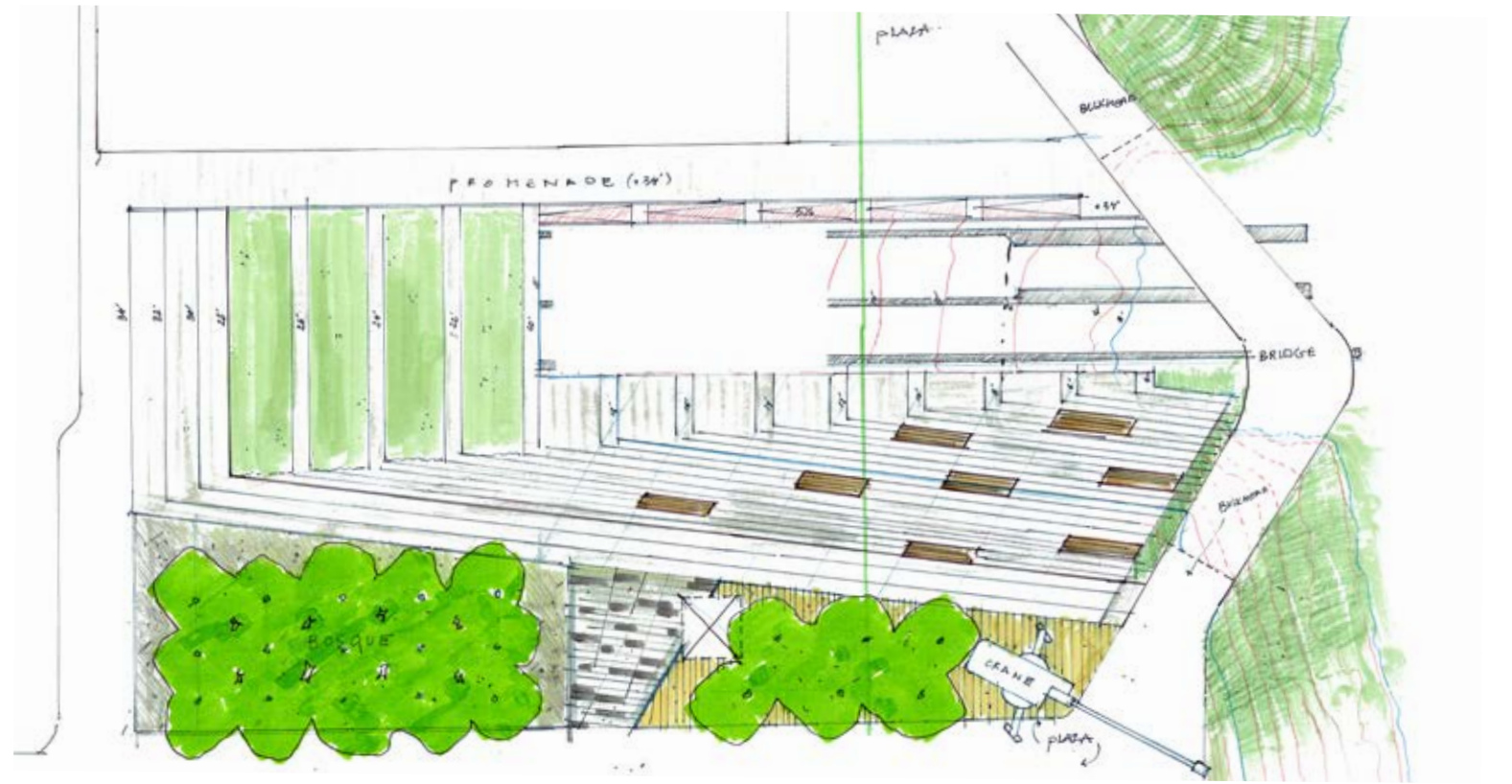
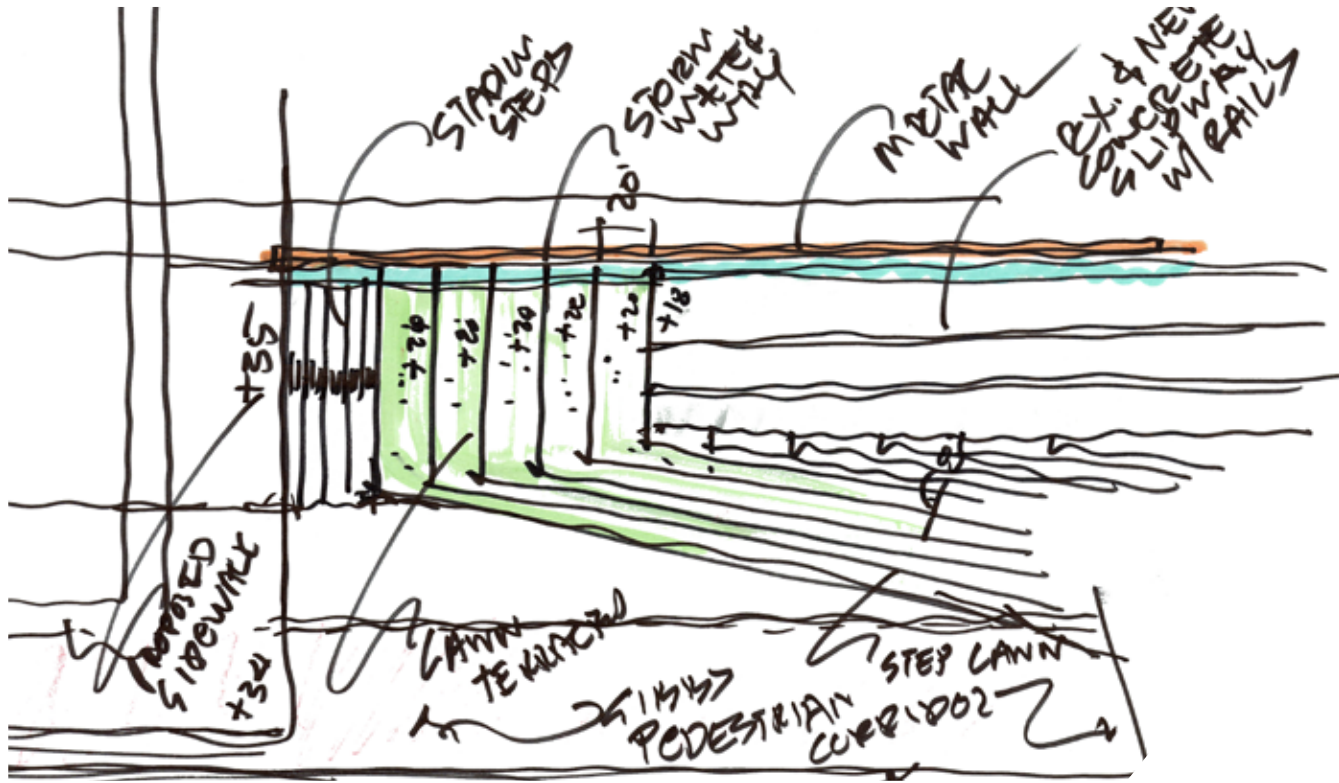
1. the level normally reached by the water on the side of a ship.

The Waterline concept is inspired by the simple impulse to mark the rise and fall of the water level in the Willamette River. With international riverbank precedents in mind, this design explores the possibility of simple steps and terraces descending toward the water. The resulting form is an amphitheatre like series of terraces and paths leading the public to the river.

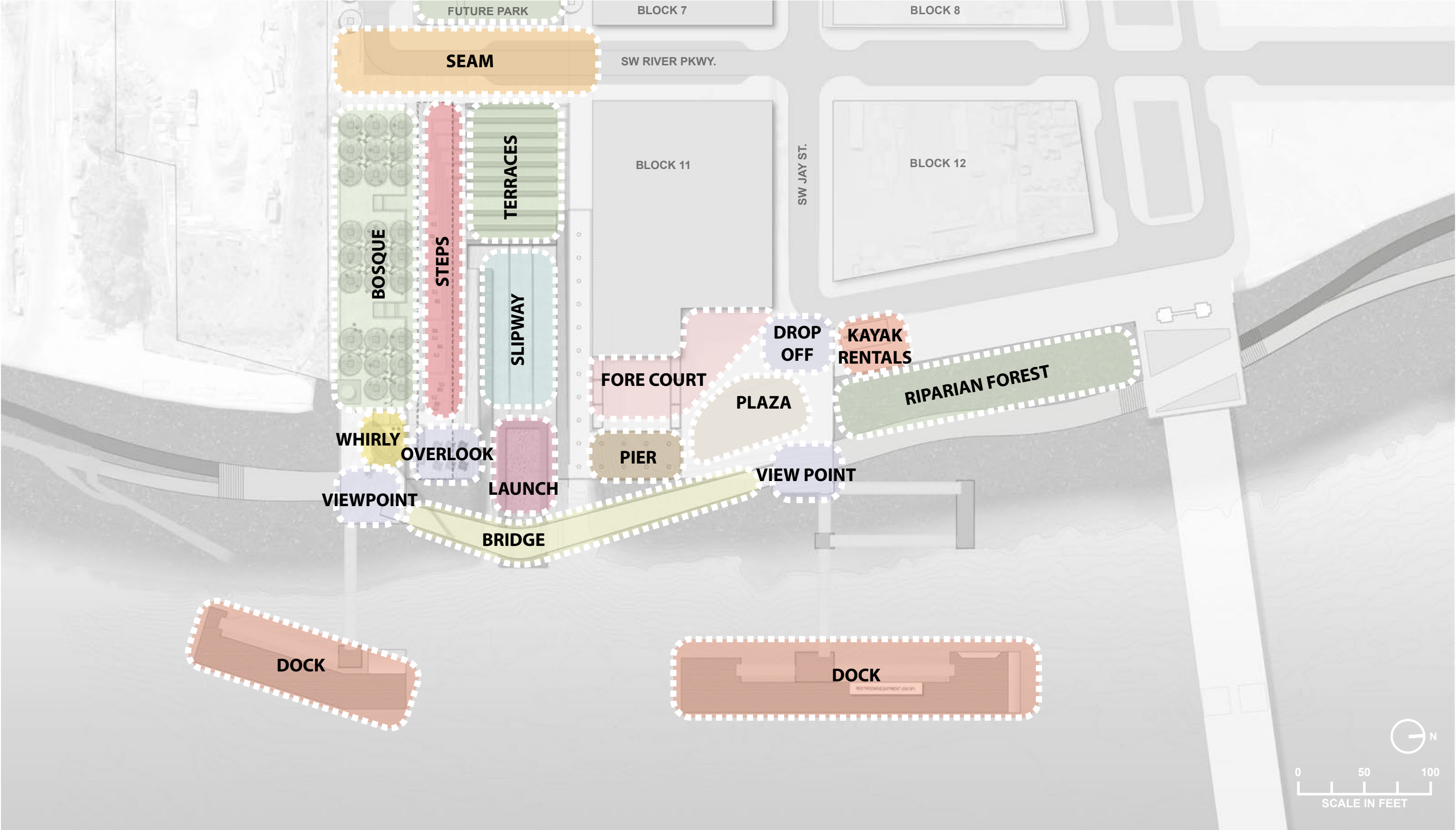


BANKS OF THE RHONE RIVER, LYON, FRANCE

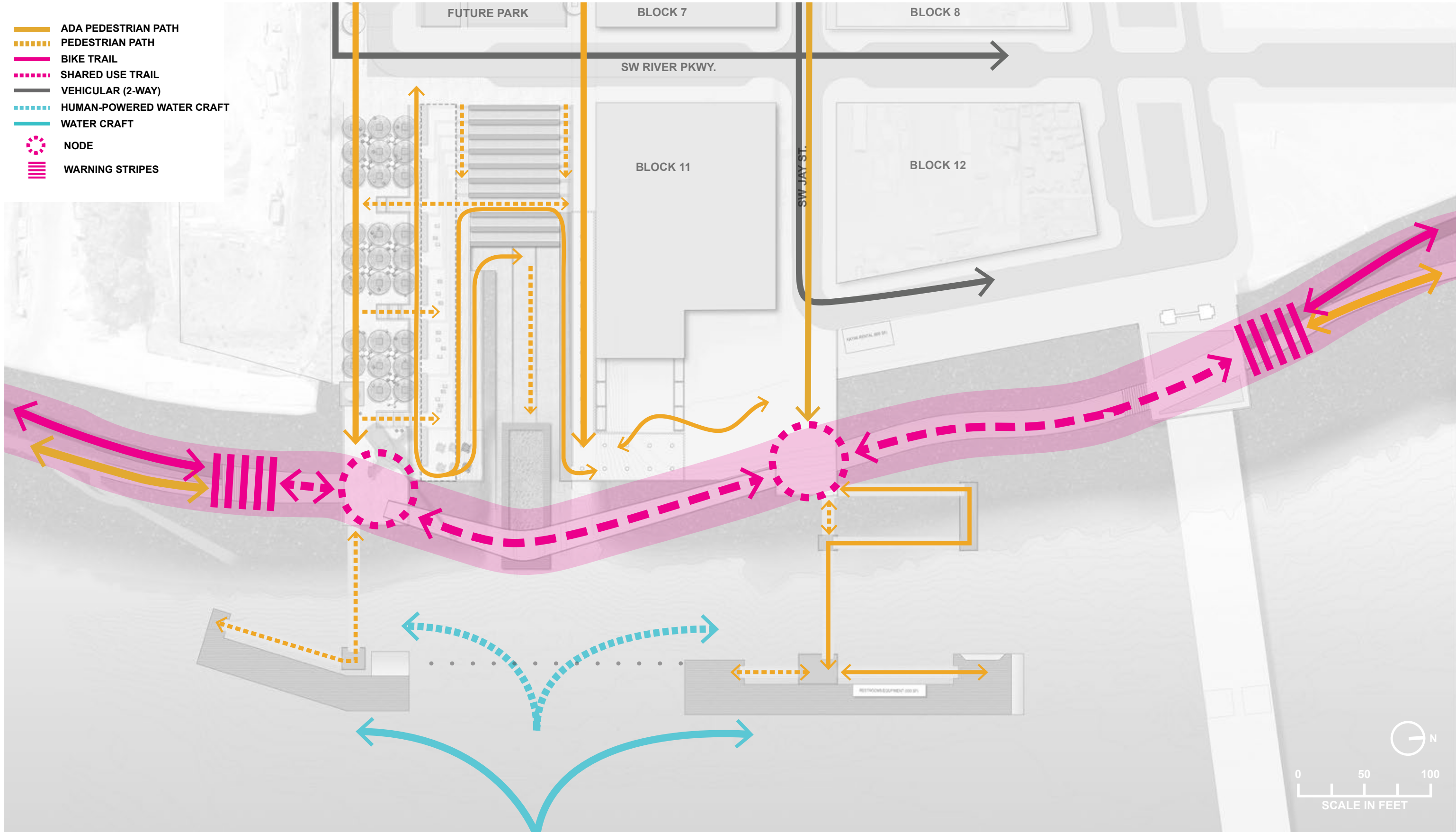




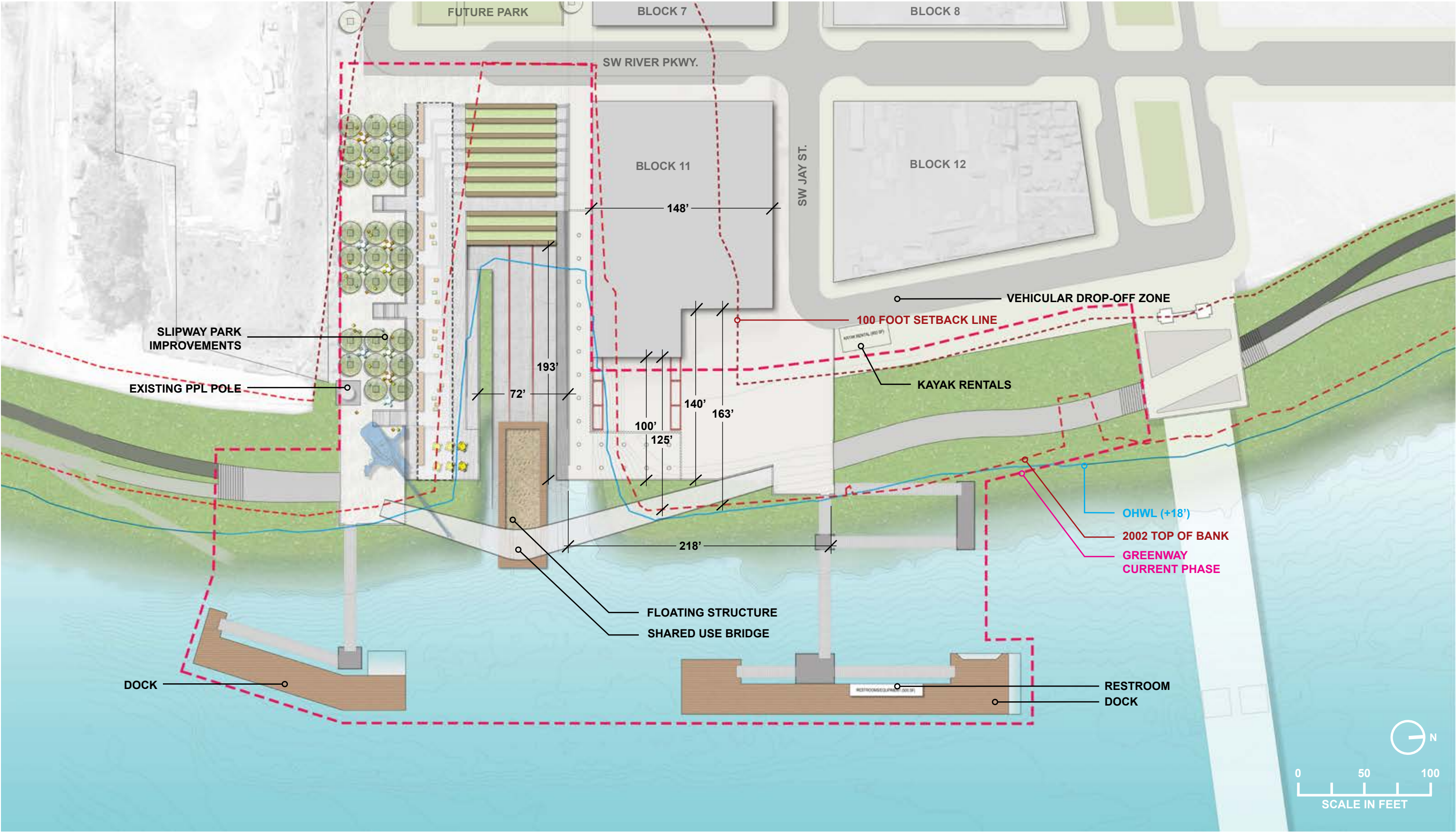








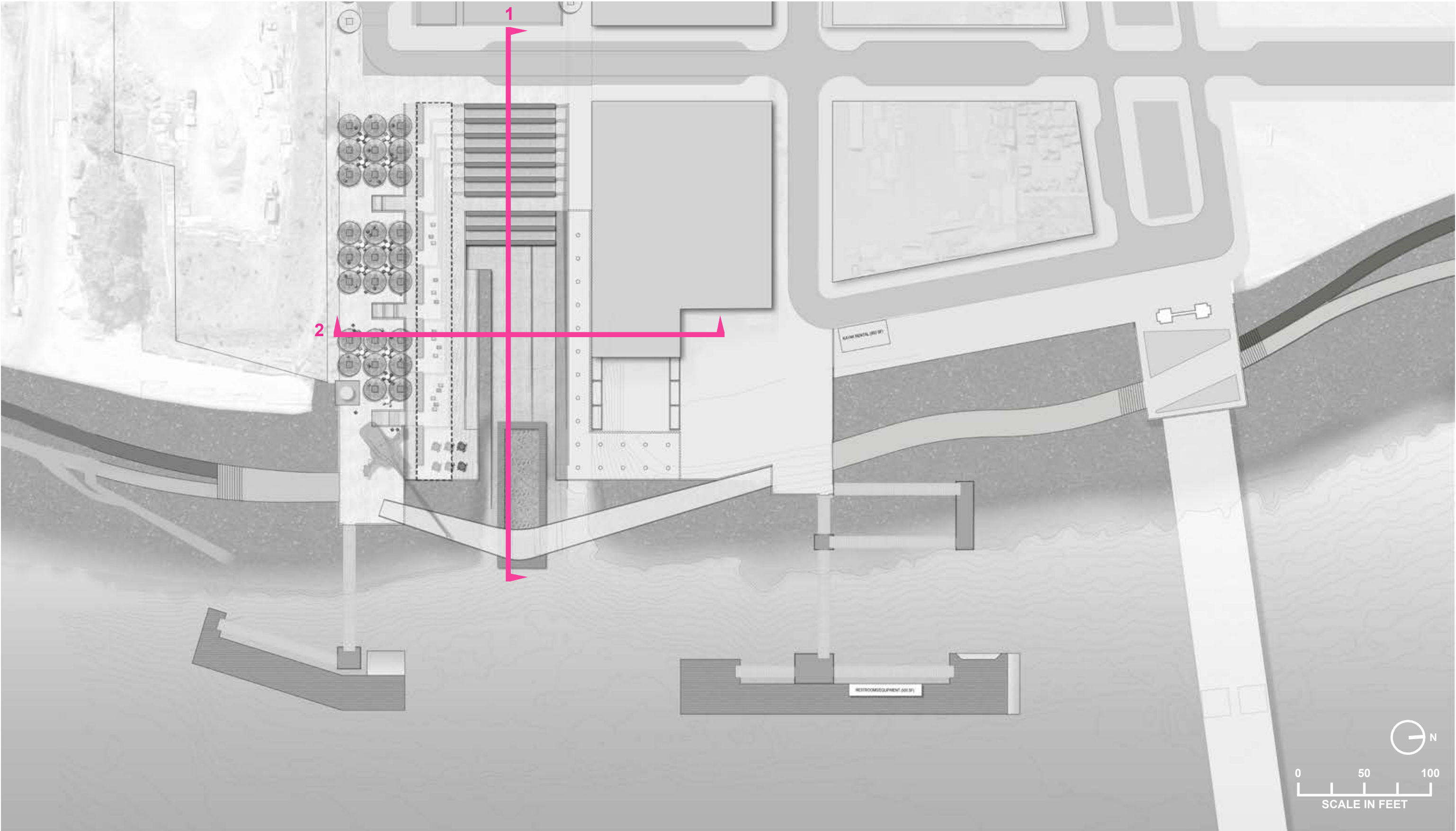




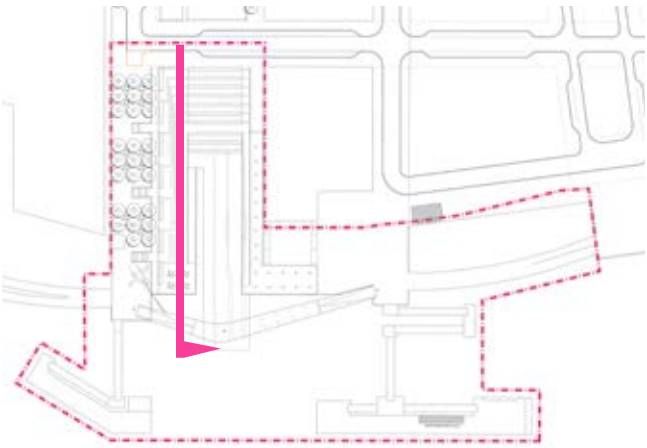
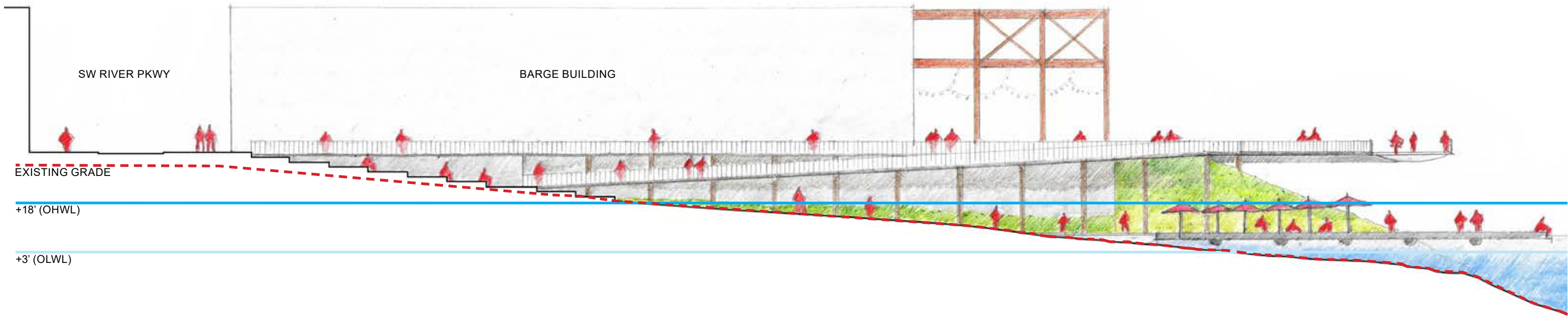


SLIPWAY SECTION LOCATIONS

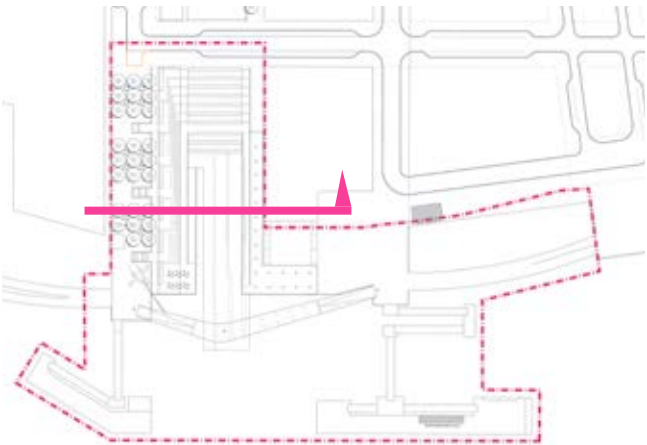
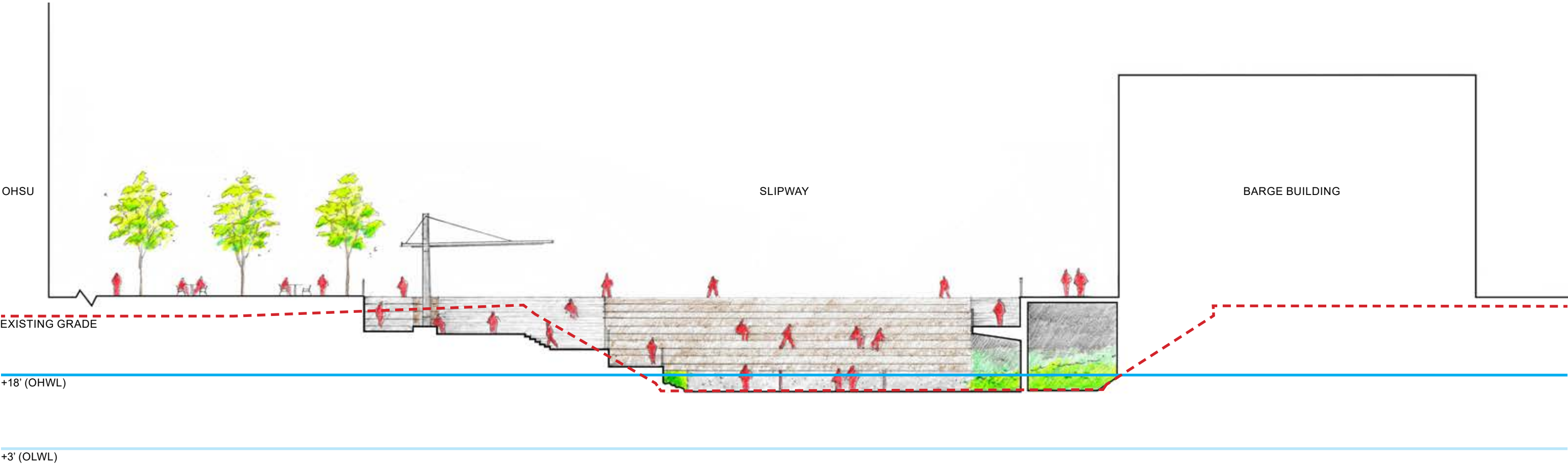
EA17-244961DA



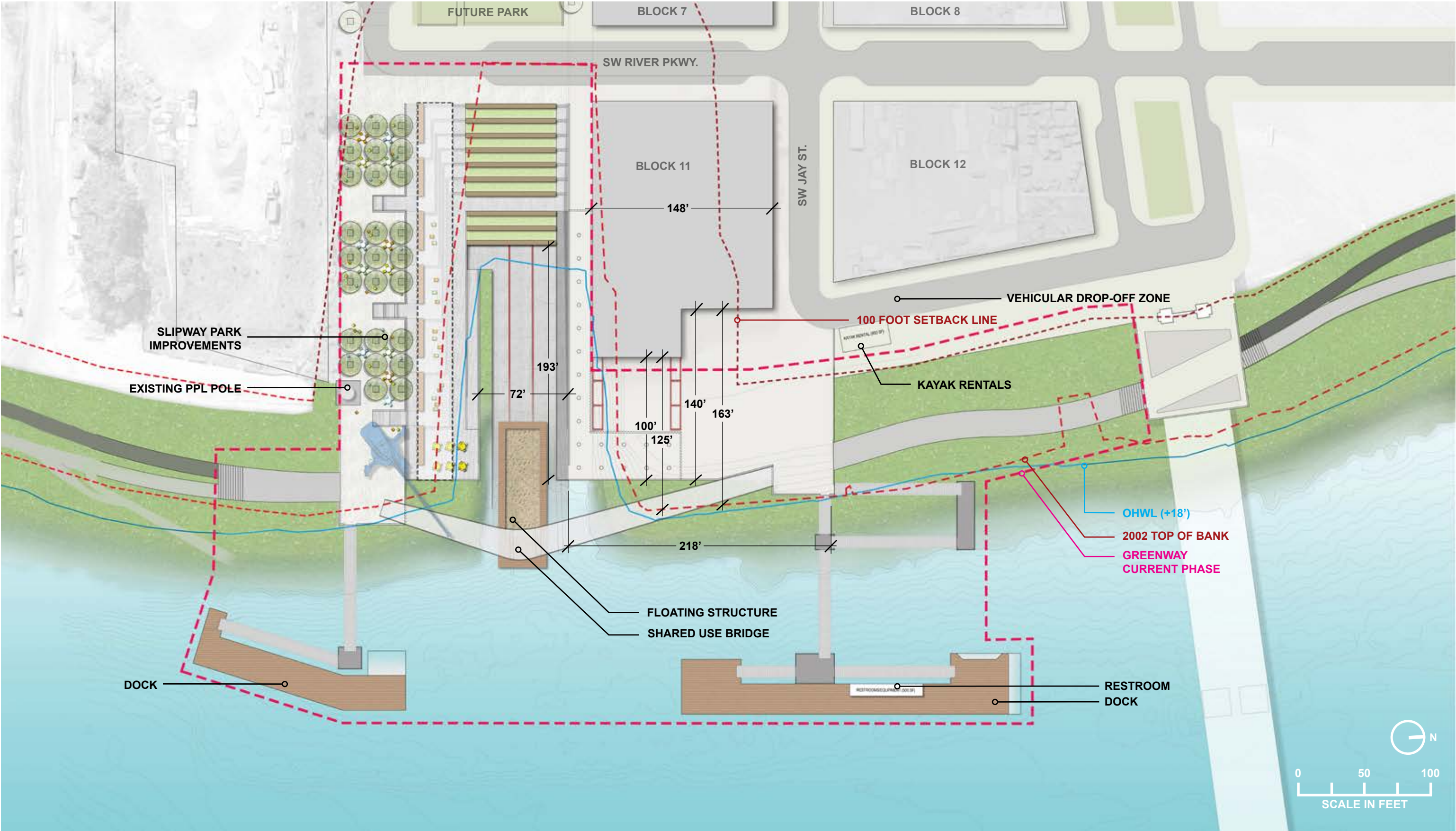




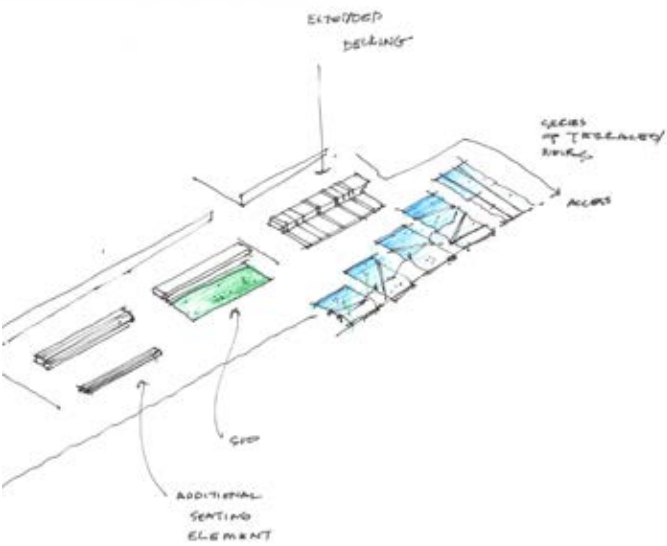






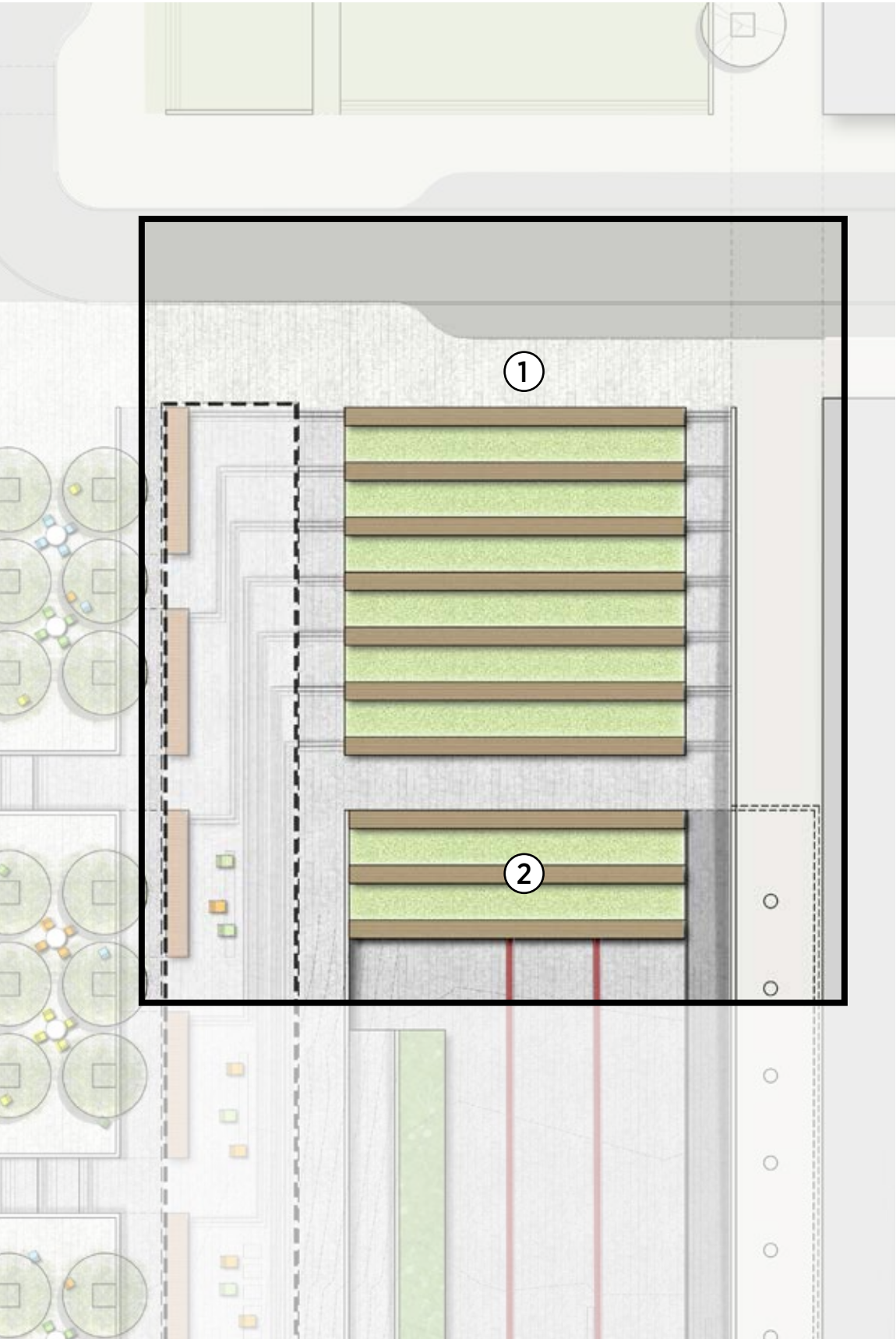
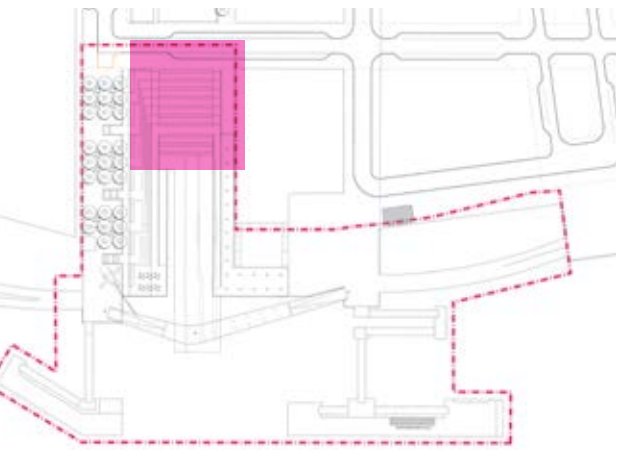






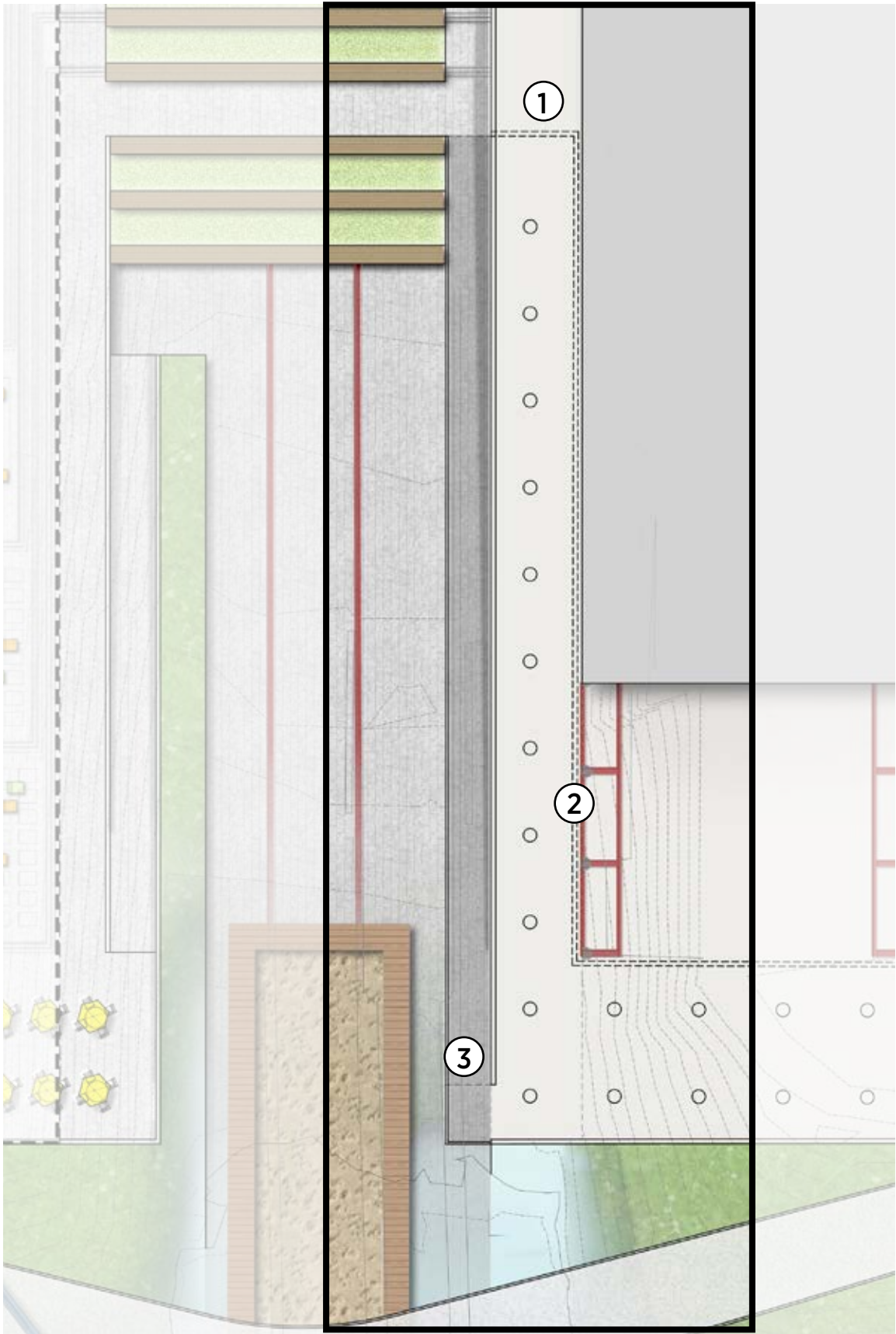
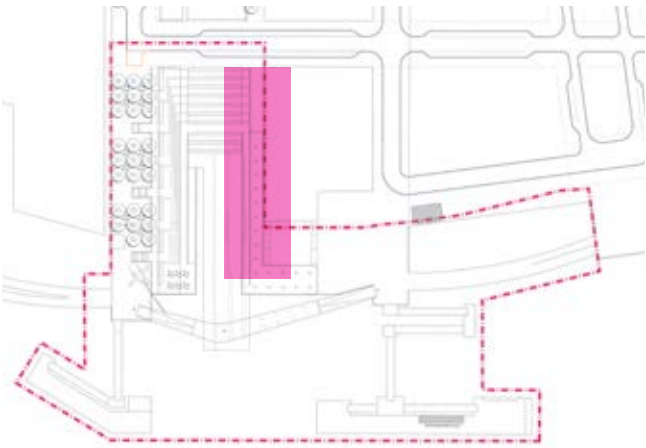
1. SW RIVER PARKWAY

2. LAWN TERRACES

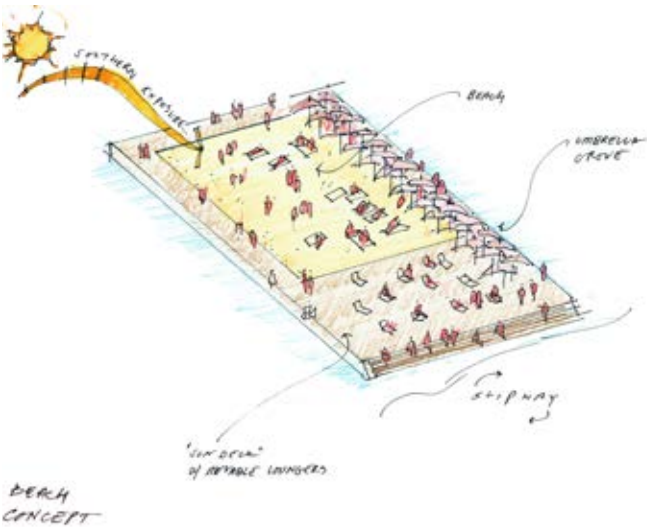




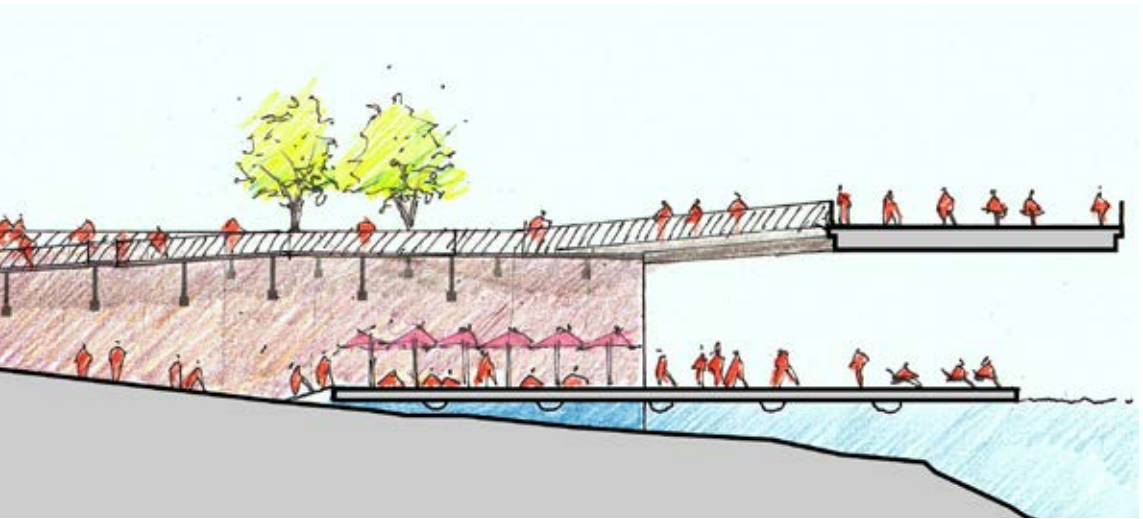
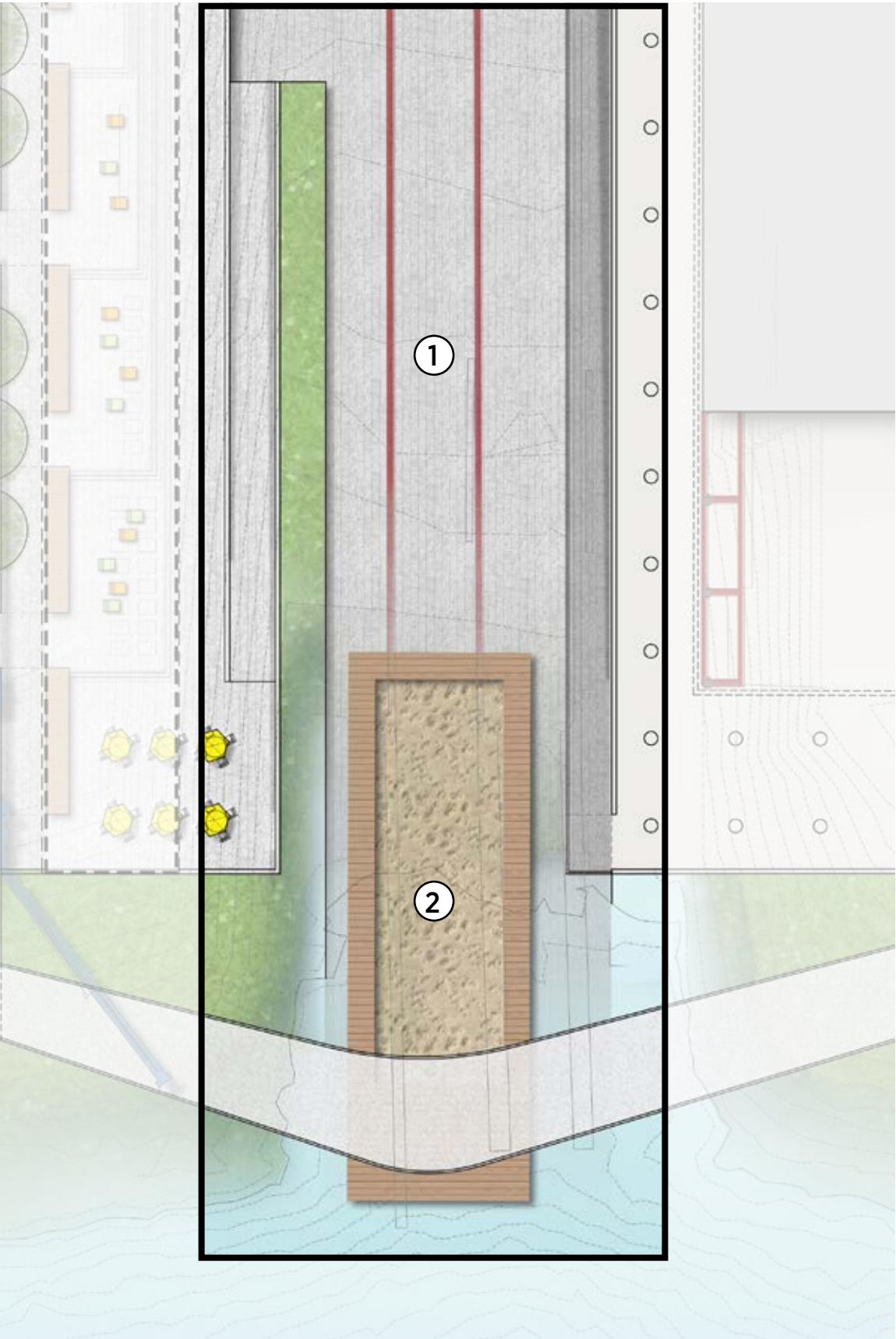
- 1. PROMENADE
- 2. SHEET PILE WALL
- 3. GANGWAY ACCESS RAMP



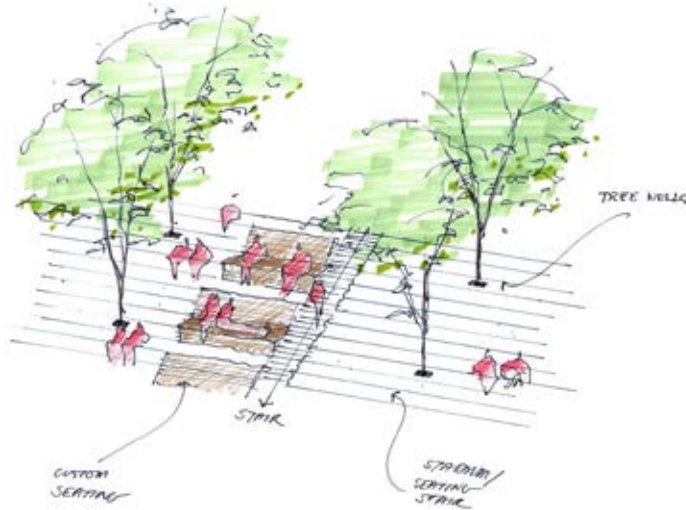




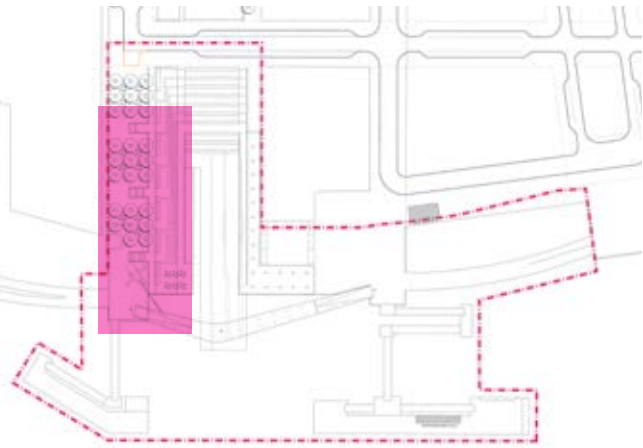
- 1. SLIPWAY RAMP & WAYS
- 2. FLOATING STRUCTURE



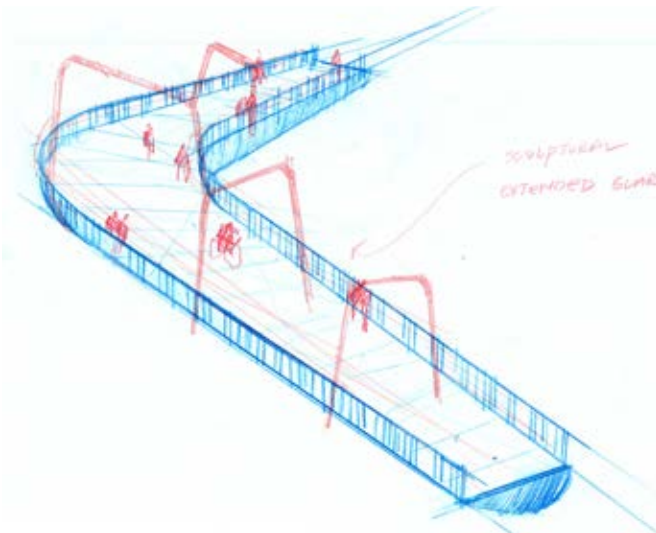




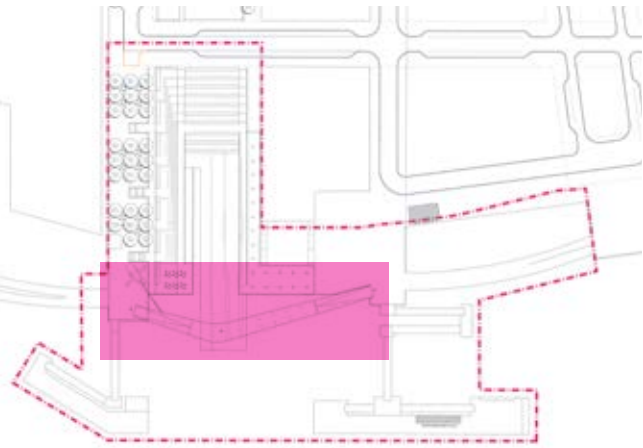
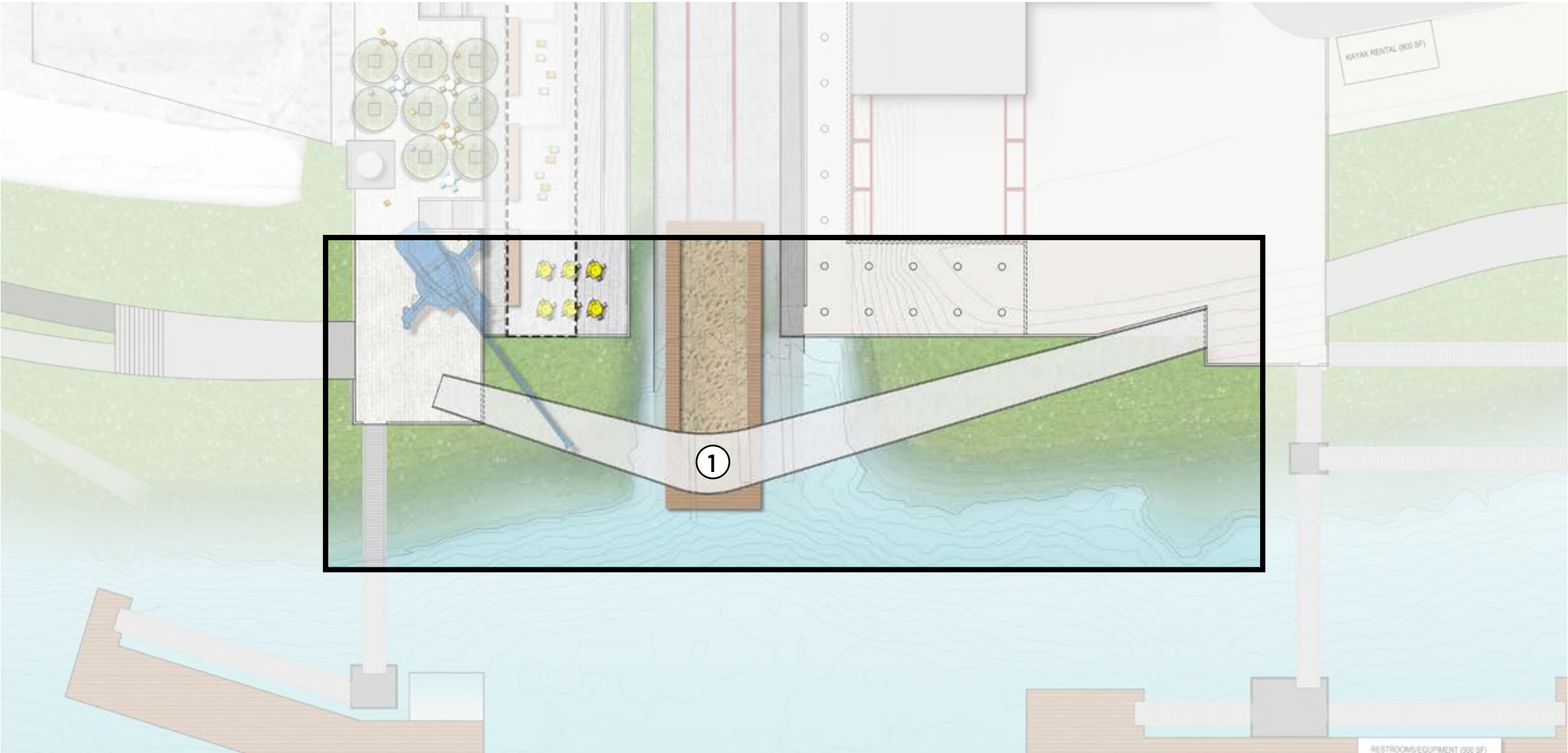
- 1. BOSQUE
- 2. TERRACES
- 3. CANOPY



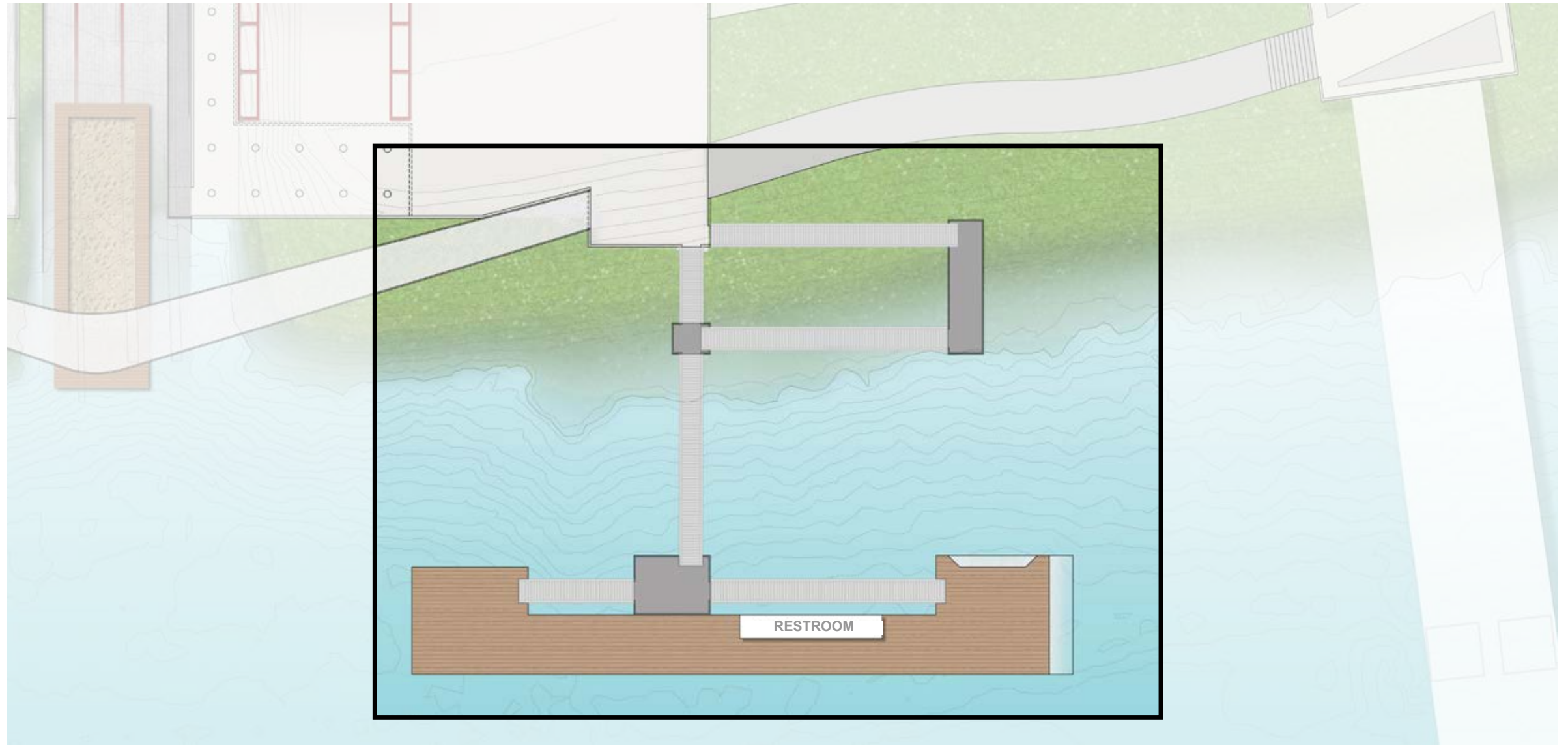




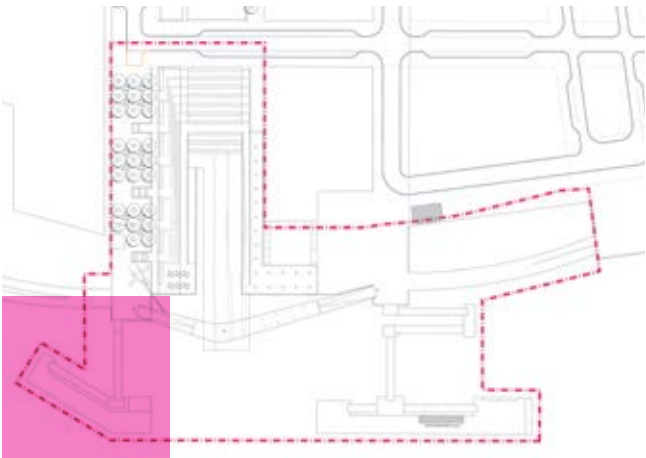
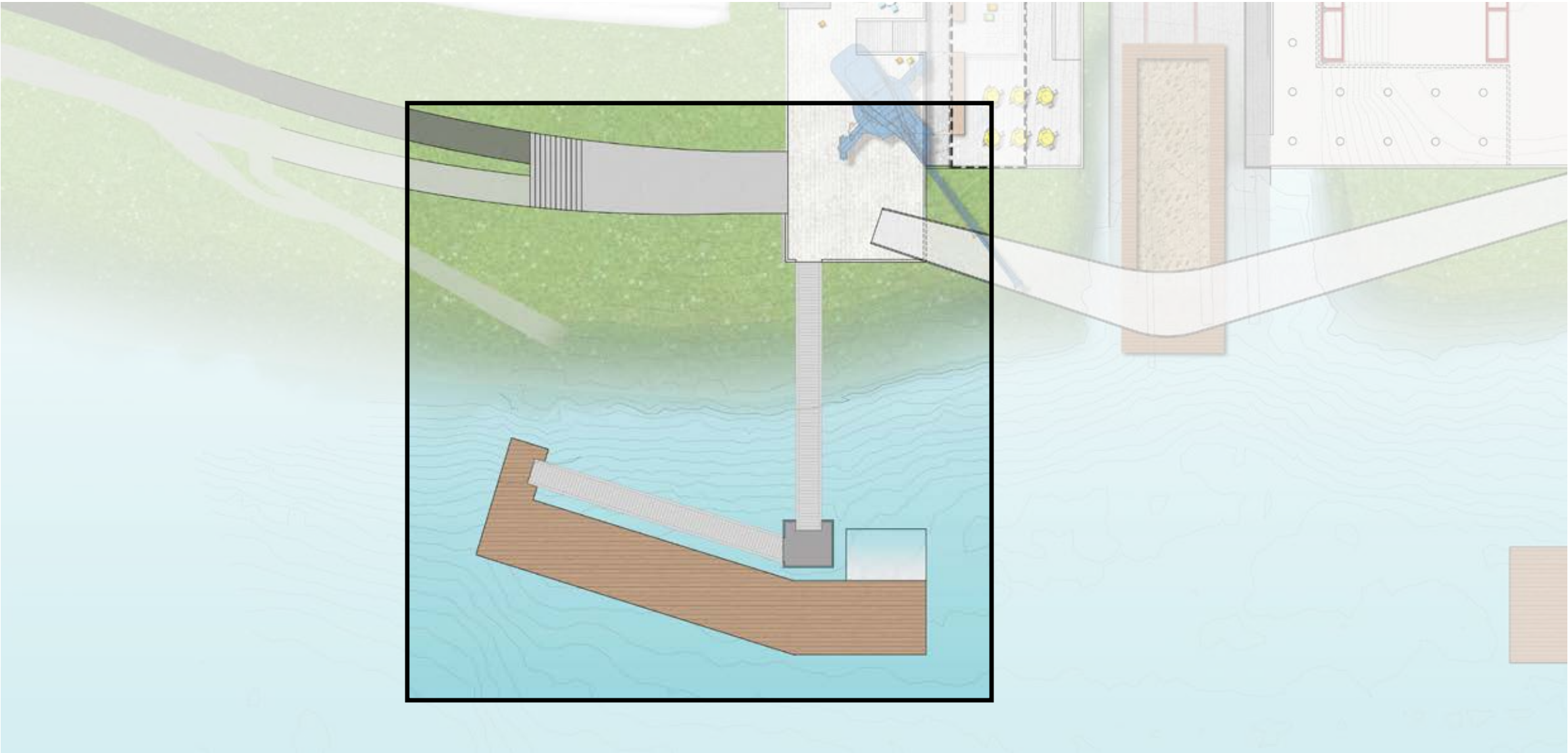
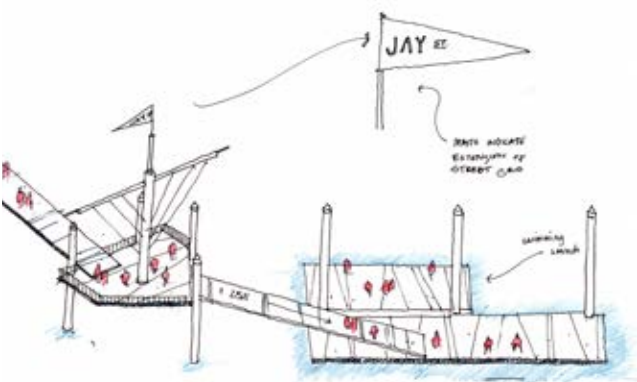
1. PEDESTRIAN BRIDGE













# DESIGN ADVICE REQUEST

## KEY DISCUSSION POINTS

EA17-244961DA

- Connections
- Character of the plazas
- Water access: docks & structures
- Active uses and features
- Bridge purpose and character
- Ecological concepts