



DEVELOPER:

**ALAMO MANHATTAN**

**BLOCK 40 - DESIGN ADVICE REQUEST - 07.13.17**





## SITE DATA

TOTAL SITE AREA = 91,939 S.F / 2.11 AC

TOTAL NUMBER OF UNITS

BUILDING #1 = 213 UNITS

BUILDING #2 = 213 UNITS

TOTAL UNITS = 426 UNITS

DENSITY = 201.85 U/AC

CAR PARKING PROVIDED

BUILDING #1 = 201 SPACES

BUILDING #2 = 201 SPACES

TOTAL SPACES = 402 SPACES

BICYCLE PARKING PROVIDED - LONG TERM

BUILDING #1 = 324 SPACES

BUILDING #2 = 324 SPACES

TOTAL SPACES = 648 SPACES

BICYCLE PARKING - SHORT TERM

BUILDING #1 = 16 SPACES

BUILDING #2 = 16 SPACES

TOTAL SPACES = 32 SPACES

LOADING SPACES

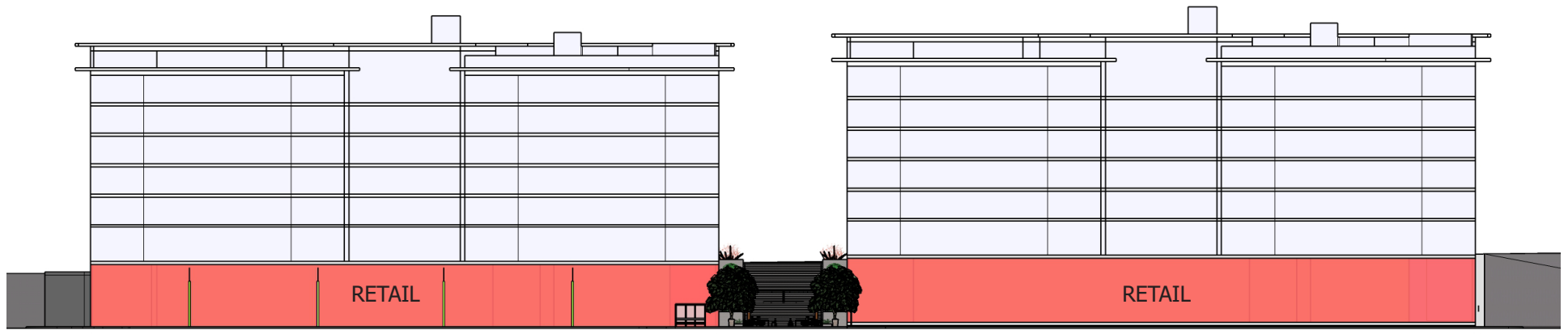
BUILDING #1 = 2 SPACES (9'X18')

BUILDING #2 = 2 SPACES (9'X18')

TOTAL SPACES = 4 SPACES

## PROJECT SITE PLAN AND DATA

ALAMO MANHATTAN - 3714 SW MACADAM AVENUE (BLOCK 40)



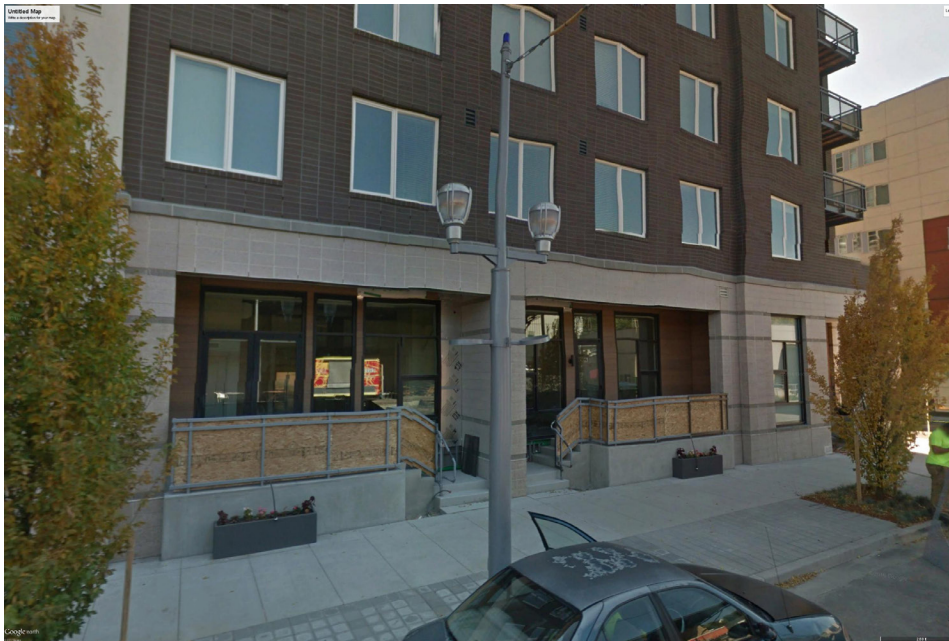
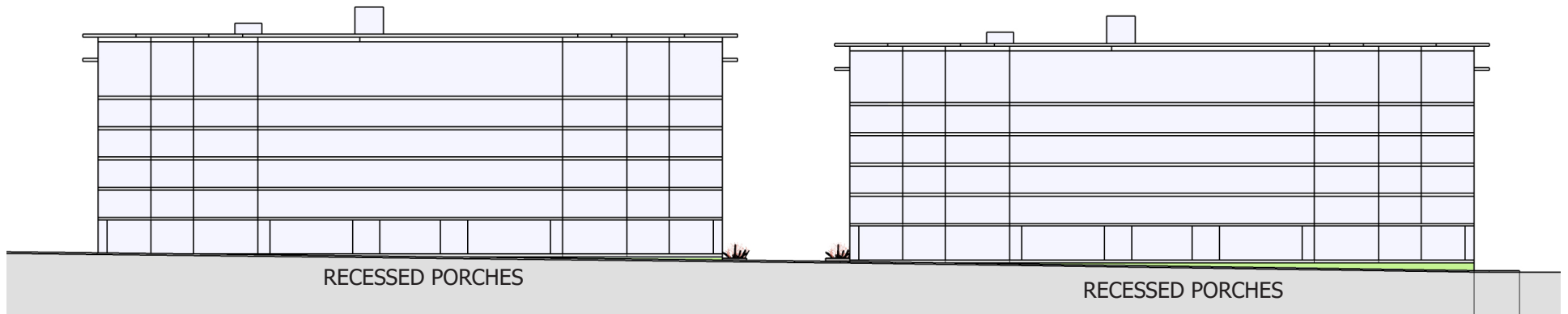
## MOODY AVENUE - STREET CONCEPT

ALAMO MANHATTAN - 3714 SW MACADAM AVENUE (BLOCK 40)



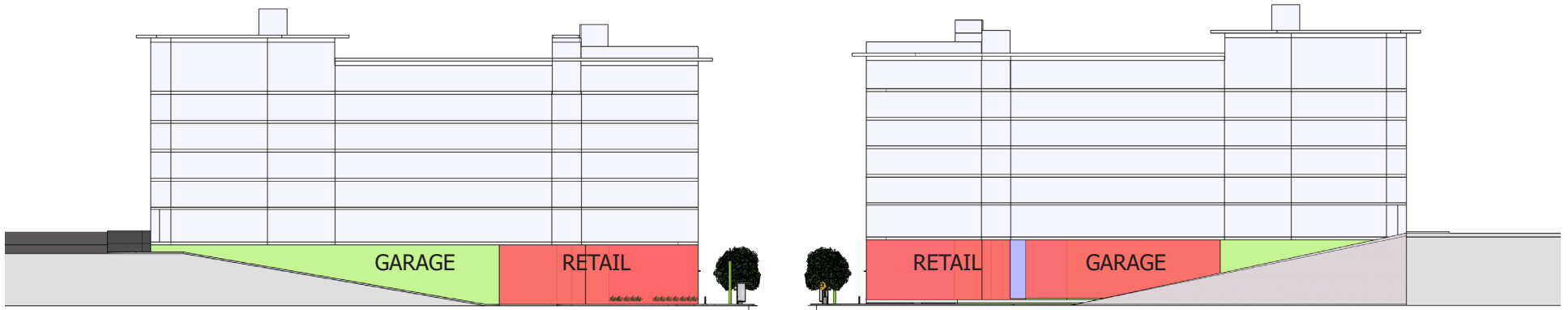
## MOODY AVENUE - STREET CONCEPT

ALAMO MANHATTAN - 3714 SW MACADAM AVENUE (BLOCK 40)



## MACADAM AVENUE - STREET CONCEPT

ALAMO MANHATTAN - 3714 SW MACADAM AVENUE (BLOCK 40)



BUILDING SERVICES

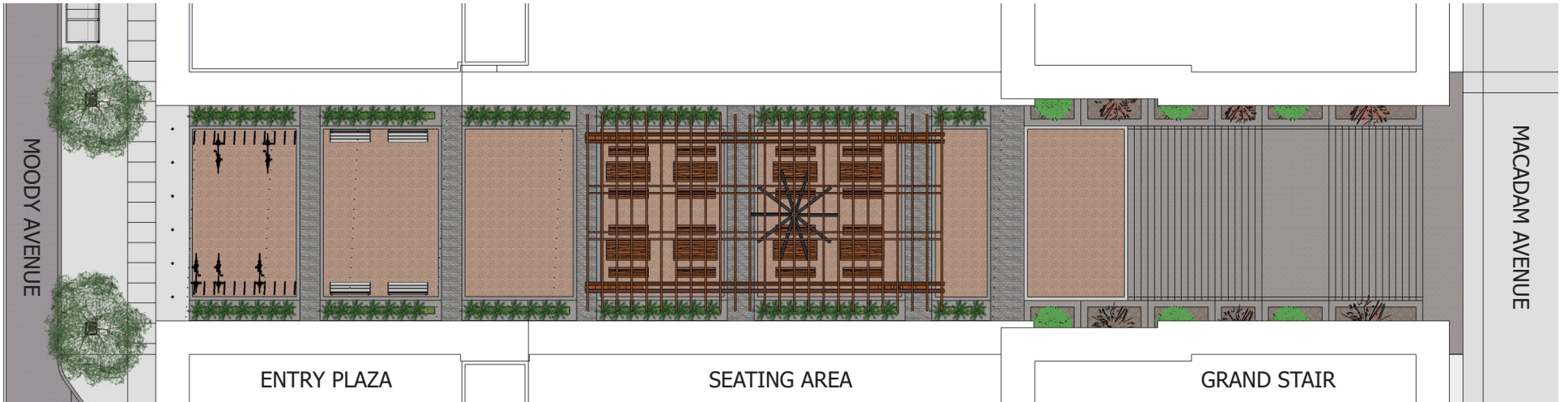


GARAGE WALL

## ABERNETHY AND GAINES STREET

ALAMO MANHATTAN - 3714 SW MACADAM AVENUE (BLOCK 40)

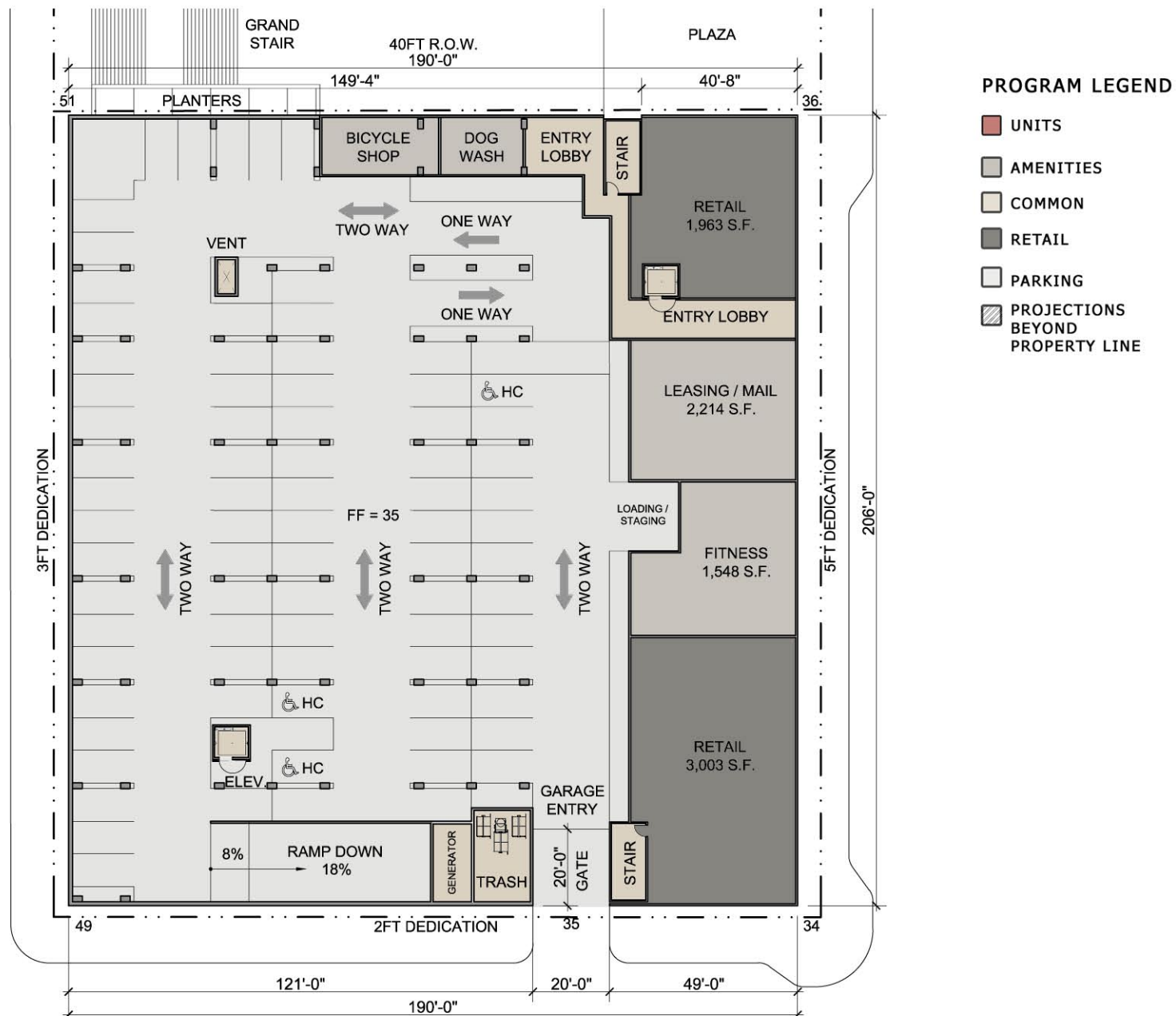


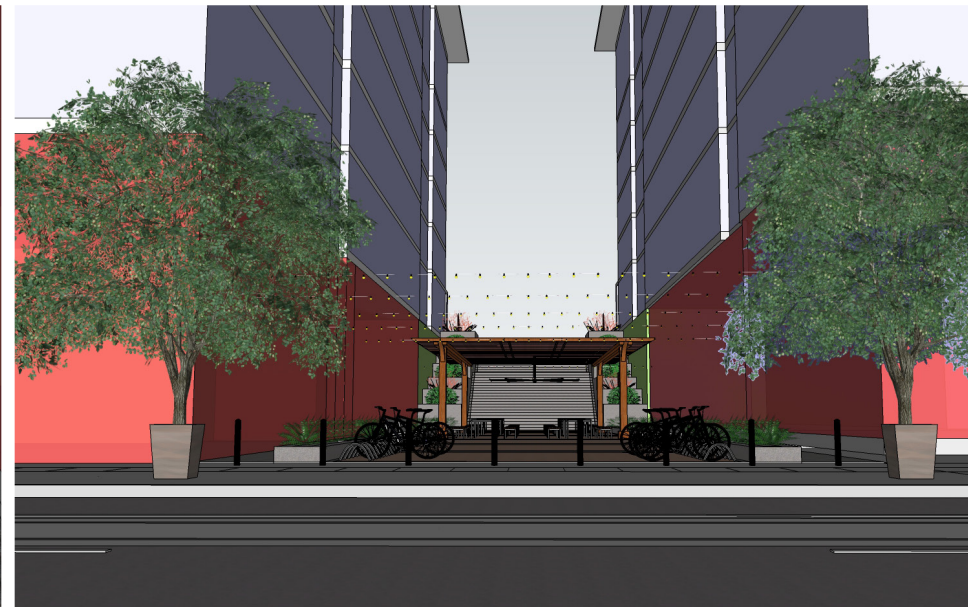
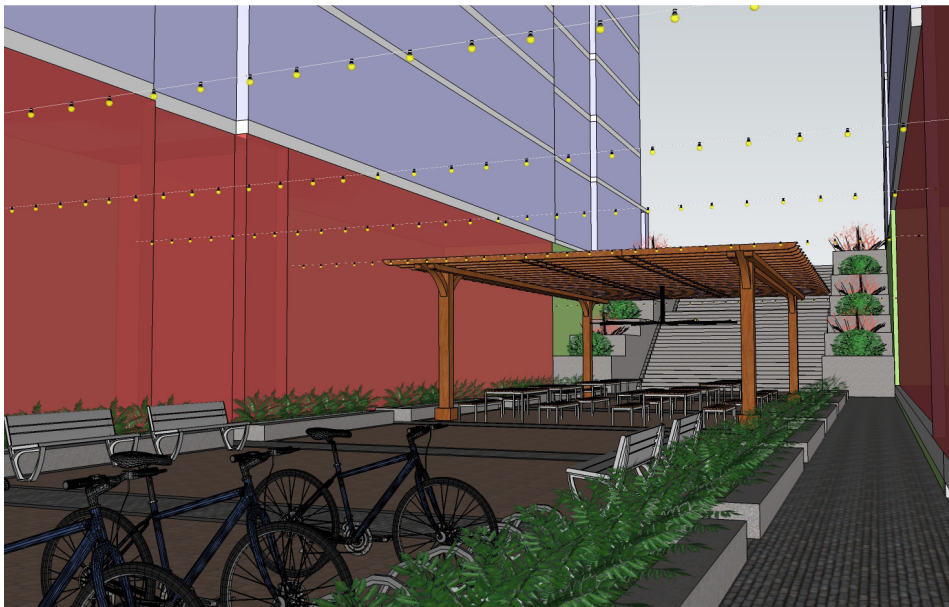


**LANE STREET**

ALAMO MANHATTAN - 3714 SW MACADAM AVENUE (BLOCK 40)







## LANE STREET

ALAMO MANHATTAN - 3714 SW MACADAM AVENUE (BLOCK 40)



## LANE STREET

ALAMO MANHATTAN - 3714 SW MACADAM AVENUE (BLOCK 40)



## ROOF TERRACE

ALAMO MANHATTAN - 3714 SW MACADAM AVENUE (BLOCK 40)



**ELLA**

ALAMO MANHATTAN - 3714 SW MACADAM AVENUE (BLOCK 40)



## GRAYS LANDING

ALAMO MANHATTAN - 3714 SW MACADAM AVENUE (BLOCK 40)



**OSPREY**

ALAMO MANHATTAN - 3714 SW MACADAM AVENUE (BLOCK 40)





## THE EMERY

ALAMO MANHATTAN - 3714 SW MACADAM AVENUE (BLOCK 40)



## RIVA ON THE PARK

ALAMO MANHATTAN - 3714 SW MACADAM AVENUE (BLOCK 40)