



# A MAGICAL PLACE FOR ALL

A profound transformation of  
Leach Botanical Garden

*Connecting People, Plants, and Place*

 **Leach**  
BOTANICAL  
GARDEN



"East Portland – the swath beyond SE 82nd Avenue and I-205 – makes up about 1/5 of the city's size and 1/4 of its population, including 1/3 of the city's children. But it holds **less than 1/10** of Portland's developed park space."

*Oregonian, October 22, 2013, Brad Schmidt*

Fortunately, 85 years ago Lilla and John Leach, an honored botanist and a civic-minded pharmacist, began planting their legacy: a botanic garden for all.

---

#### LEACH TODAY

22,000 visitors

1,375 children participated in  
programs and activities

1,000+ botanical species

120 volunteers

30 parking spaces

9 staff members





## GROWING CONNECTIONS

Leach is an enchanting refuge, but unable to meet current community needs. It lacks modern visitor accommodations, year-round classrooms, a welcoming entrance, easily traversable trails, and space for partner organizations. The City of Portland and Leach Garden Friends in consultation with numerous partners have adopted a comprehensive \$30M plan to transform Leach and connect 100,000 visitors and students with nature through plants, ecology, education, art, and recreation. **As an intercultural community hub and destination for inspiration and learning for all, Leach will strengthen East Portland and serve as a point of pride for the entire city.**



"Today, people are coming more and more to public gardens which nationally average an annual 75 million visitors."

*American Public Gardens Association*

---

### THE FUTURE LEACH

- 750 new plant species
- 4 new botanic collections
- Visitor center
- Gift shop
- Coffee terrace
- Classroom/community meeting center
- 1.5 miles of new pathways
- 60 more visitor parking spots
- Bicycle and bus parking
- Partners' office building
- Staff headquarters



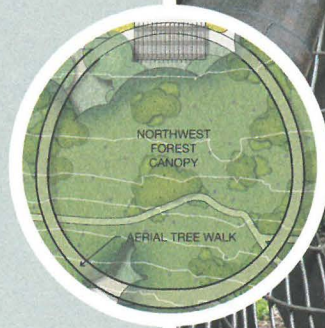
Only 10% of American teens spends time outside every day, while adults spend just 5% of their day outside.

*Nature Conservancy & Harvard School of Public Health*

## CONNECT TO NATURE

Botanists James Wandersee and Elisabeth Schussler defined “plant blindness” as “the inability to see or notice the plants in one’s own environment,” which leads “to the inability to recognize the importance of plants in the biosphere and in human affairs.” Green surrounds us, yet we do not all grasp the key roles plants play in our lives. Botanical gardens unlock the mystery and guide us toward a deeper understanding of our relationship to nature.

**GET A BIRD’S EYE VIEW** Our wheelchair accessible **Aerial Tree Walk** will thrill all visitors. At its southern end the 350-foot, looping walkway rises 30 feet above ground, offering views up into the tree canopy and down onto forest floor plantings. The Tree Walk provides visitors an unforgettable garden overlook and a fresh perspective on nature.







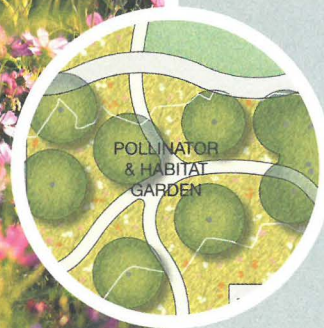
"The best gardens draw people together as flowers attract pollinators to plants: irresistibly."

*Joey Pope,  
Honorary Capital Campaign Co-Chair*

---

## CONNECT TO COMMUNITY

Gardens act as a conduit for community engagement, helping establish feelings of belonging and cultivating pride of place. A true botanic garden in this neighborhood will increase civic involvement in and viability of this unique community



**CELEBRATE LIFE IN BLOOM** The stunning, highly floral **Pollinator and Habitat Garden** will be popular with visitors year-round and provide a natural classroom for learning about the vital role of pollination and sustainable gardening principles.



"Education then, beyond all other devices of human origin, is the great equalizer."

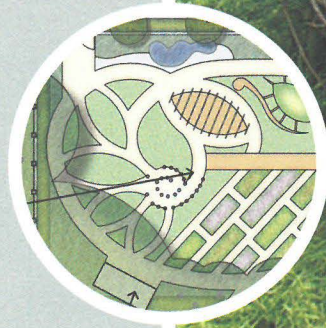
*Horace Mann, politician*

---

## CONNECT TO EDUCATION

By sharing the power of plants with the young, we can groom tomorrow's scientists, conservation leaders, and environmentally responsible citizens. Many spaces across the property will augment formal education by allowing children to play, inquire, and discover at their own pace.

**PLAY WITH PLANTS** The perfect place for the young and young-at-heart to play, engage, discover, and learn, the **Children's Garden** will instill an appreciation for plants and nature with hands-on activities and attractions. This garden will demonstrate issues related to habitat, water, climate change, and plant migration. It will also feature a "discovery garden" where children of all abilities can play in environmental sculptures or lose themselves in a grass maze.





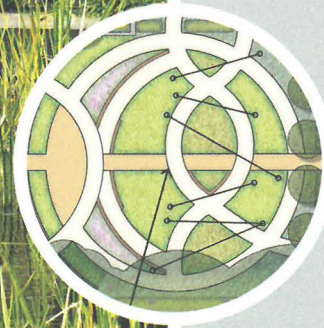


Cardiovascular and mental health will be the leading contributors to disease by the year 2020.

*World Health Organization, World Bank and Harvard School of Public Health*

## CONNECT TO HEALTH

People, traditionally, have turned to nature for relaxation, inspiration, and healing. Time spent in nature reduces stress and lowers blood pressure. Two essential natural resources, water and plants, are crucial to our health and well-being.



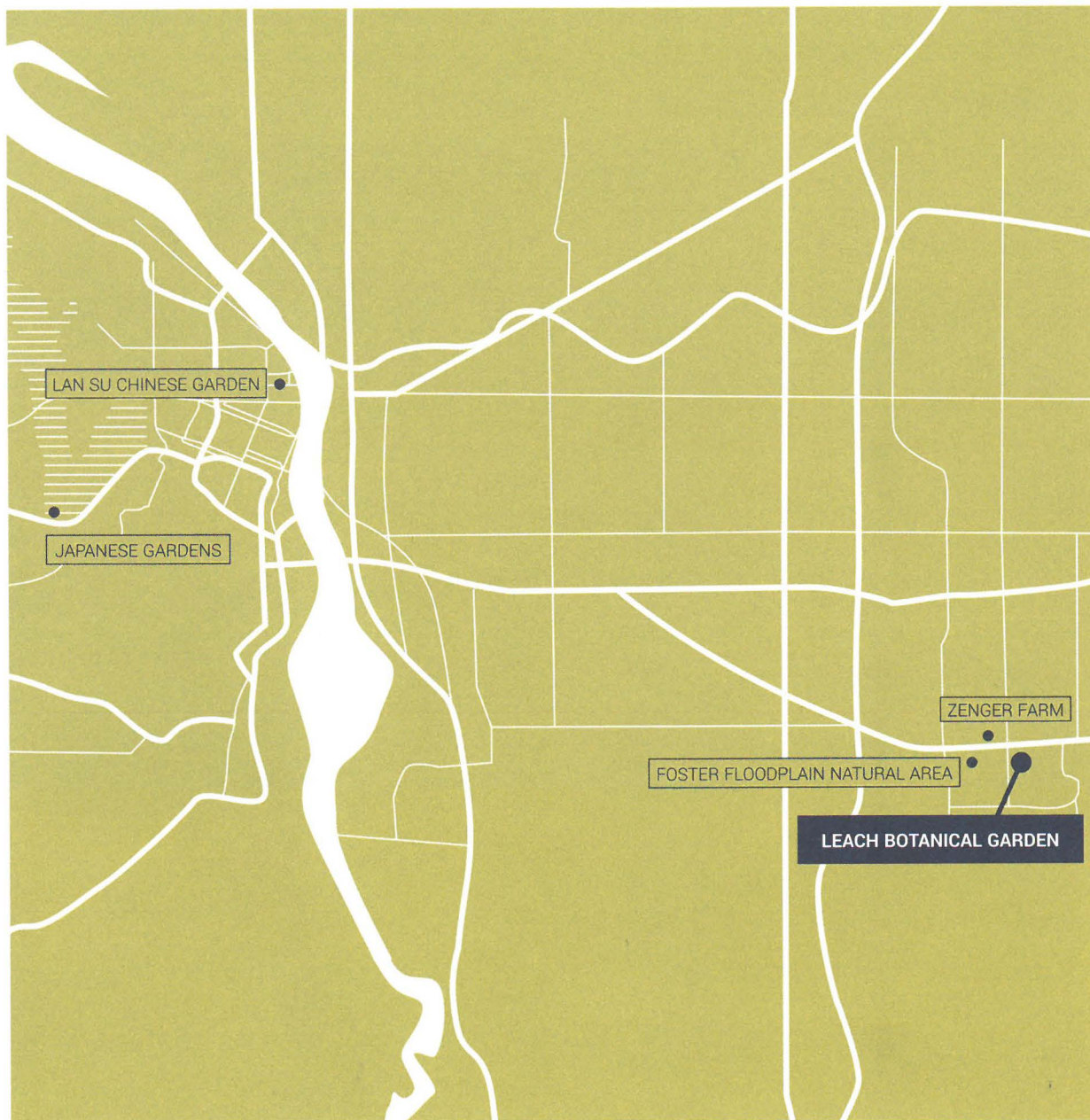
**UNDERSTAND HOW WATER AND PLANTS PROMOTE HEALTH** State-of-the-art water gardens including a fen, a bog, and a roof-fed alpine brook will inspire and inform about our dependence on this vital resource. **A 21st Century Physic Garden** will showcase plants that provide botanic cures for physical and mental ailments, as well as "green" sources for cosmetics, textiles, and industrial products.



"We are excited to team with Leach Garden Friends to develop Leach's Upper Garden. Our partnership will bring excellence in design and sustainability to a part of town worthy of investment. Together, we will transform Leach into a nationally acclaimed botanic garden that connects us to nature."

*Mike Abbaté,  
Director, Portland Parks & Recreation*





---

## CONNECT TO PORTLAND

The Foster Floodplain Natural Area and Zenger Farm are established conservation projects near Leach. In an area experiencing steady population growth but uneven business opportunities, they nurture economic development and promote sustainable living. A fully developed Leach Botanical Garden will complete this Eastern Eden triangle. The new Leach will also form a triangle with the built-out Japanese and Chinese Gardens, making greater Portland a better-recognized garden destination.

These factors point to a profound opportunity to bring nature-centric amenities to East Portland, attract new businesses, build partnerships with diverse and complementary organizations, and encourage tourism. It is time to connect this region to the rest of the city and enhance Portland's reputation for natural beauty and sustainability.







"To plant a garden is to  
believe in tomorrow."

*Audrey Hepburn*

## CREATE MAGIC WITH US

Our long-range \$30M plan allows for flexibility in building, so we can allocate resources to projects of promise as our fundraising evolves.

### PHASE I IMPROVEMENTS

- Aerial Tree Walk (see page 4)
- Fireplace Terrace and Arbor, event space with inspiring views
- Gathering Green for programs or informal events
- Habitat and Pollinator Garden (see page 5)
- Safer Paths Connecting Upper and Lower Gardens
- Upper Garden Parking
- Welcoming Garden Entry

### FUTURE PHASE HIGHLIGHTS

- Alpine Garden, showcasing some of the most fragile plants on the planet
- Children's Garden, featuring hands-on experiences
- Community and Special Events Pavilion
- Gift Shop and Partner Offices
- Gulliver's Garden, an enchanting garden that makes visitors feel tiny
- Physic Garden, a modern take on John Leach's medicinal garden
- Visitor Welcome Building
- Water Gardens, with a pond, bog, and fen

**Contribute to the Leach legacy and be at the forefront of developing Portland's own botanical garden.** To learn more, visit [leachgarden.org](http://leachgarden.org) or contact David Porter or James Draznin at (503) 823-1671 or [dporter@leachgarden.org](mailto:dporter@leachgarden.org) or [jdrznin@leachgarden.org](mailto:jdrznin@leachgarden.org).





## LEACH GARDEN FRIENDS

### Board Members

Sue O'Halloran, *President*

Thomas Bland

Irene Bowers

Mary LK Davis

Gay Greger

Michael McKeel

Amy Miller Dowell, FAIA

Linda Morrow

CiCi Polson

Dale Shetler

Marina Yudin

### Staff

David Porter, *Executive Director*

James Draznin, *Development Director*

Scott Hoelscher, *Head Gardener*

Janice Jenkins, *Education Coordinator*

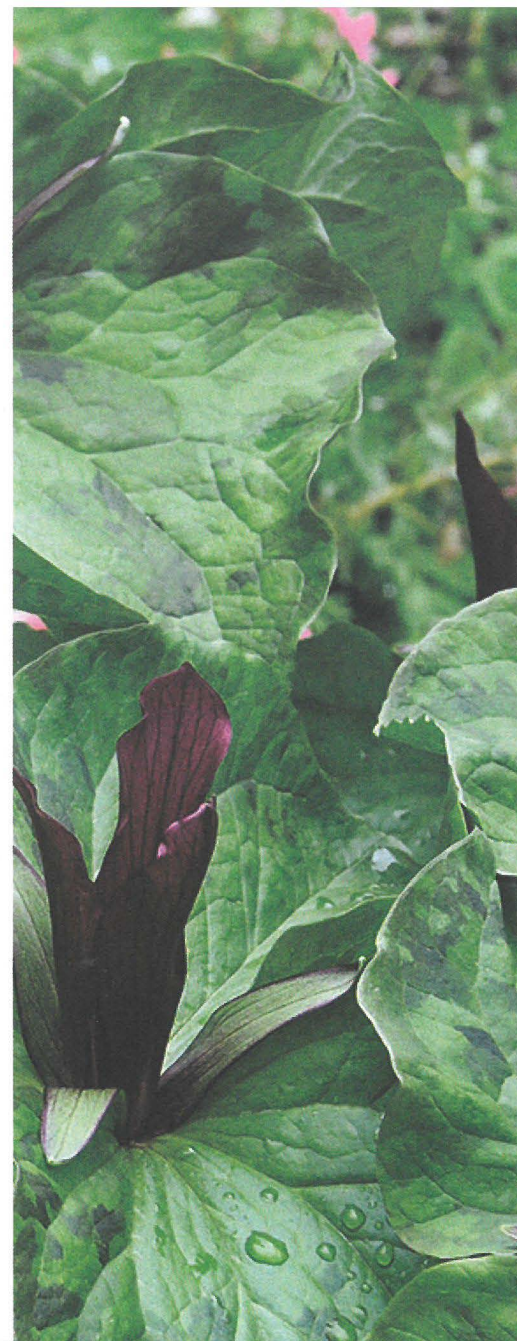
Kathleen Kennedy, *Facilities Manager*

Alena Schnarr, *Executive Assistant, Operations*

Jenna Stathopoulos, *Sales and Event Coordinator*

Courtney Vengarick, *Gardener and Curator*

Annie Winn, *Volunteer Coordinator*





City Council -- Wed 3-15 9:30AM PORTLAND BUILDING.

Remarks— Identify and acknowledge board members present

MAYOR WHEELER AND COMMISSIONERS

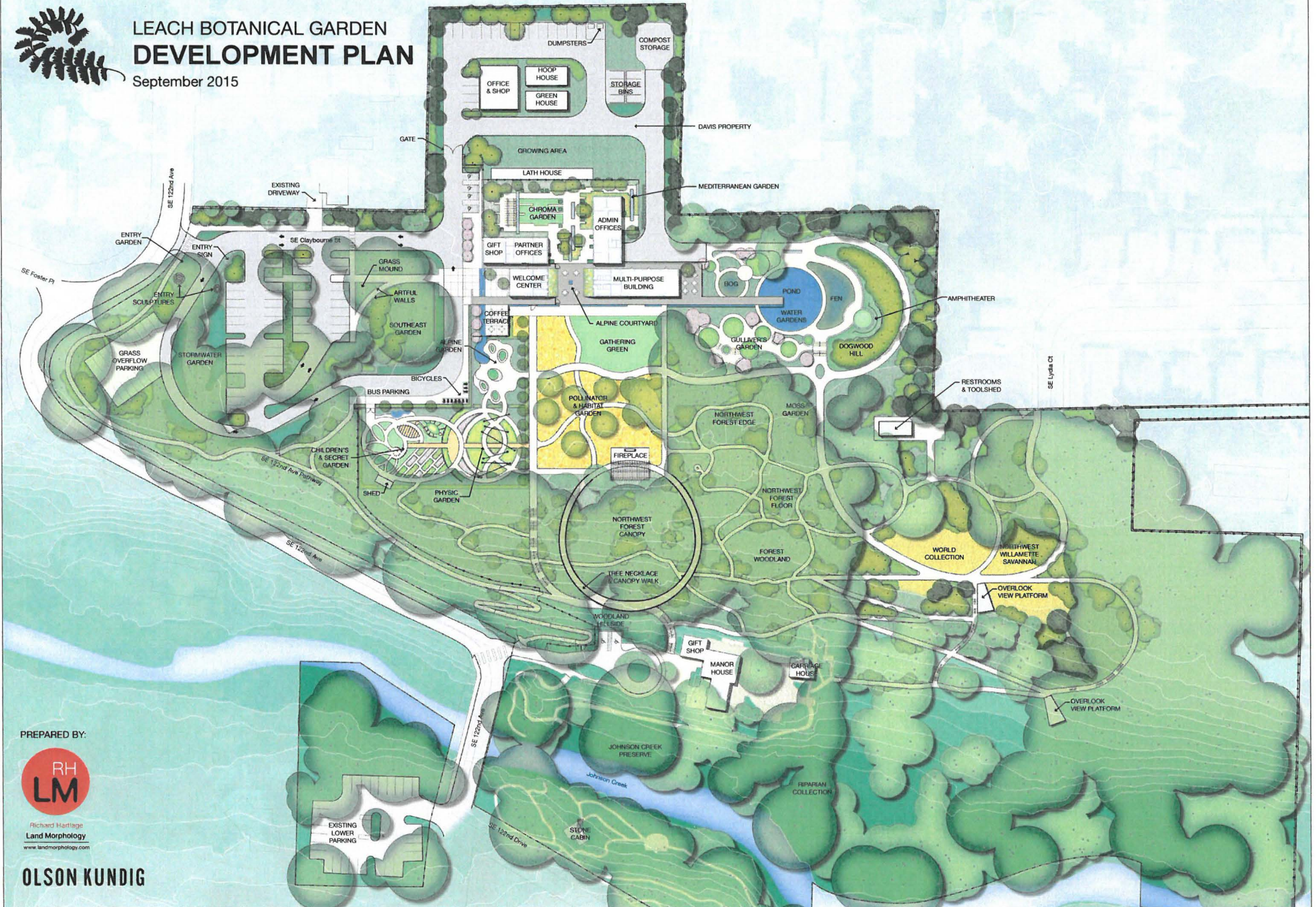
- I am here this morning to say "Thank You".
- When I started my job in September 2010, one of the first things I did was come to Council for a vote adopting the 2008 Master Plan for development at Leach Botanical Garden.
- With money from PP&R and the Portland Development Commission, we began the long but important process of identifying what this Garden could become –to fulfill the vision for its development conceived 30 plus years ago.
- Today, Leach Garden friends are looking ahead with eager anticipation to beginning construction of the first phase of the Upper Garden development in 2018.
- We are at this moment because we have had the support of City Council and particularly of Commissioner Fritz and her predecessors as Parks Commissioners for those past 8 years.
- THANK YOU.
- We have also had the solid support of Parks Director Mike Abbate and his excellent staff. Without their efforts and enthusiasm we would not be here.
- THANK YOU.
- And we appreciate the significant support of East Portland Action Plan and the many organizations and individuals who are working to make East Portland wonderful.
- The design we will build is the brainchild of the talented team led by Land Morphology and Olson-Kundig. It will transform the Garden –preserving the historic and charming Leach estate on Johnson Creek while creating new botanical presentations, accessible pathways and visitor facilities so that we can better serve the growing population surrounding the Garden as well as the increasing number of visitors.
- Exciting elements of the first phase include an aerial tree walk which will allow anyone to walk out into the midstory of the woodland forest and experience it close at hand. A large terrace and arbor at the high point of the land will include a gas fire hearth and a view into the forest. The covered space will allow gatherings from social events to classes. A pollinator garden nearly 5000 square feet in size and a gathering green for public outdoor events will also be featured. The pollinator garden is planted so as to change its color and patterns with the seasons.
- Building such a project requires community financial support. In December, Commissioner Fritz committed \$ 4.9 million SDC funds to the project if our friends group would raise \$ 1.26 million. I am happy to report that we have succeeded in raising over \$ 700,000 to date and are working on the remaining \$ 550,000. The offer of an 8 to 1 match has helped to stimulate donors.
- I have copies of our campaign brochure for each of you. Mayor Wheeler and Commissioner Eudaly, I look forward to having you visit the Garden.
- And I am eager to come back to Council when we have completed the first phase of the project to invite you all to join us to cut the ribbon and open this catalyst project to the public.
- THANK YOU AGAIN FOR YOUR TIME AND YOUR SUPPORT.





# LEACH BOTANICAL GARDEN DEVELOPMENT PLAN

September 2015



PREPARED BY:



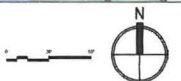
Richard Hartlage  
Land Morphology  
www.landmorphology.com

**OLSON KUNDIG**

PREPARED FOR:



**PDC** | PORTLAND  
DEVELOPMENT  
COMMISSION  
www.pdc.us





**Moore-Love, Karla**

---

March 15 ✓

**From:** David Porter <dporter@leachgarden.org> ✓  
**Sent:** Thursday, January 26, 2017 3:52 PM  
**To:** Moore-Love, Karla  
**Subject:** Communication Item at Council

Good afternoon, Karla-

I am writing to inquire about having three minutes to say 'thank you ' to the Mayor and Council and to briefly update them on growing support for Leach Botanical Garden's capital campaign. I could be there on Wednesday Feb 1 if there is a place on the docket.

Let me know. And thank you in advance for your help.

**David Porter**  
**Executive Director**  
**6704 SE 122<sup>nd</sup> Ave.**  
**Portland, OR 97236**  
503.823.1673  
[www.leachgarden.org](http://www.leachgarden.org)





Request of David Porter to address Council regarding Leach Botanical  
Garden (Communication)

MAR 15 2017  
PLACED ON FILE

Filed MAR 07 2017

**MARY HULL CABALLERO**  
Auditor of the City of Portland

By  Deputy

COMMISSIONERS VOTED AS FOLLOWS:		
	YEAS	NAYS
1. Fritz		
2. Fish		
3. Saltzman		
4. Eudaly		
Wheeler		